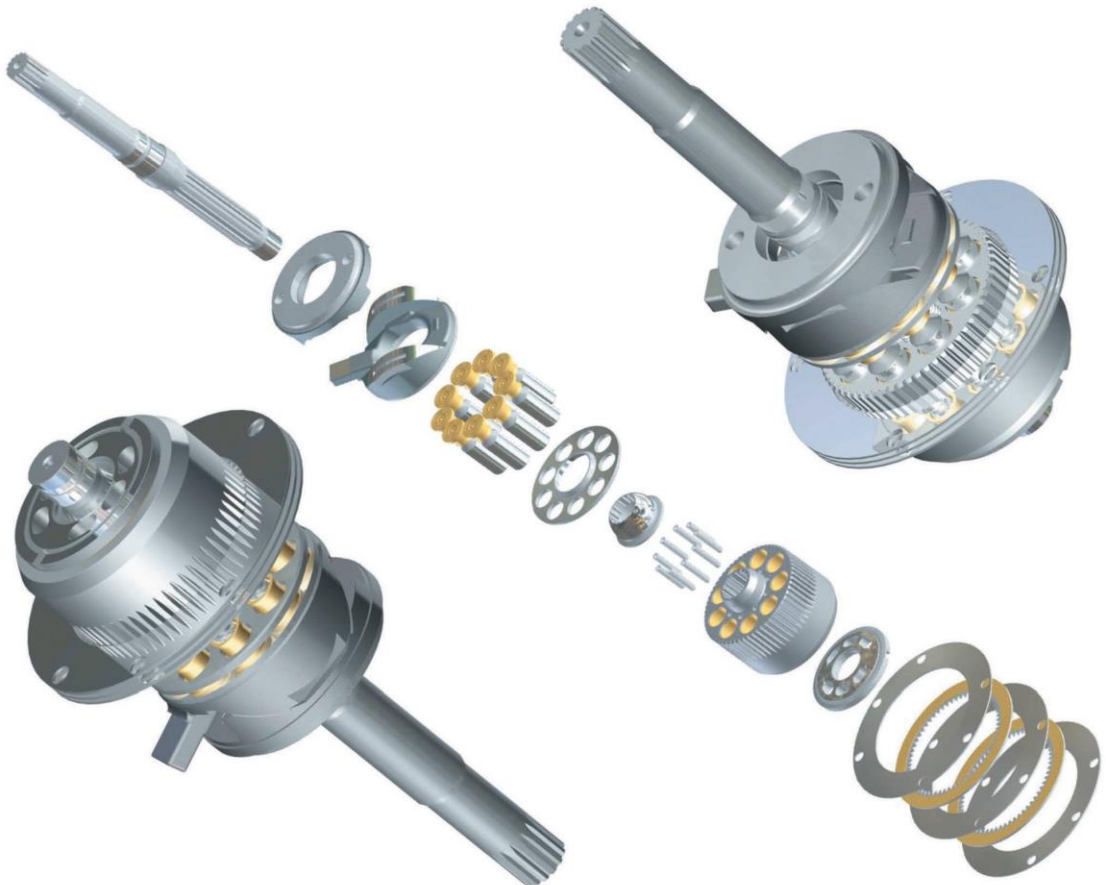
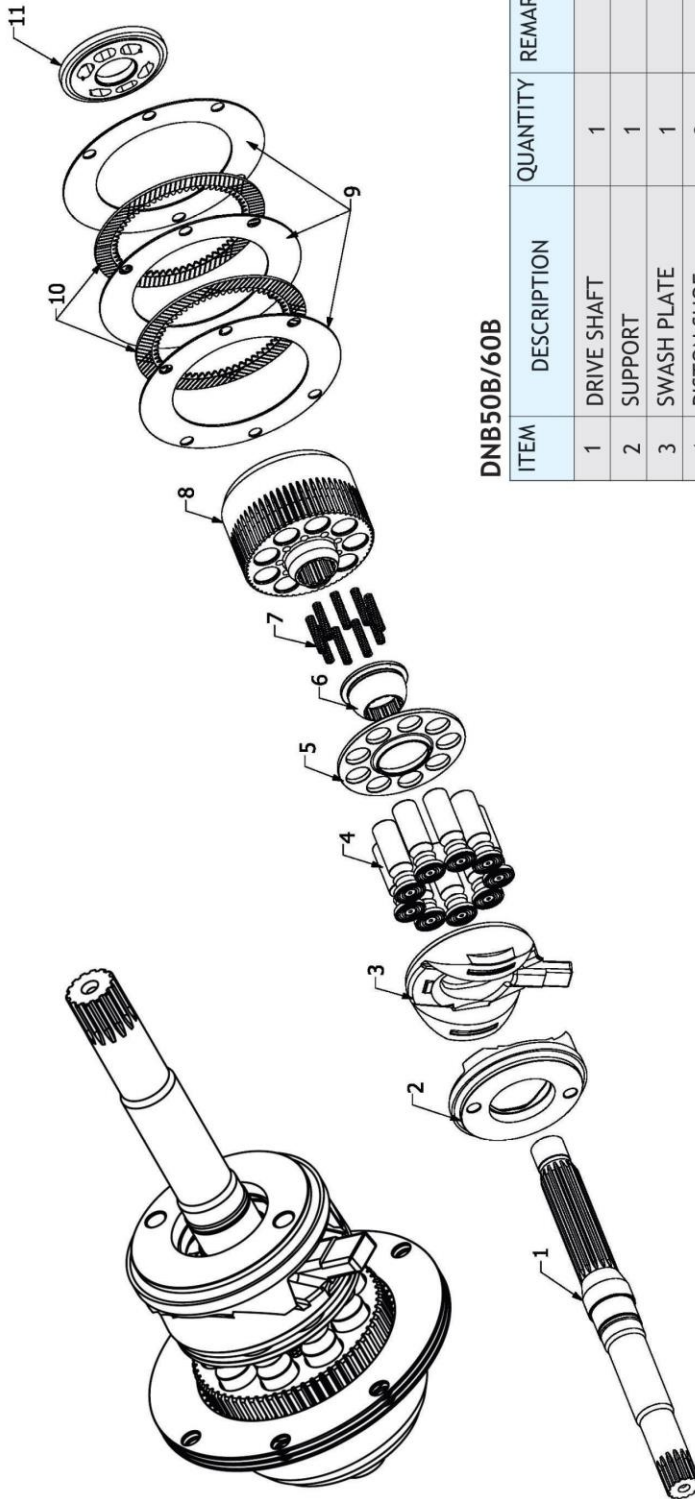


DNB50B/60B



DNB50B/60B



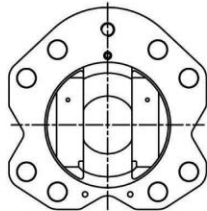
DNB50B/60B

ITEM	DESCRIPTION	QUANTITY	REMARK
1	DRIVE SHAFT	1	
2	SUPPORT	1	
3	SWASH PLATE	1	
4	PISTON SHOE	9	
5	SET PLATE	1	
6	BALL GUIDE	1	
7	COIL SPRING	9	
8	CYLINDER BLOCK	1	
9	SEPARATION PLATE	3	
10	FRICTION PLATE	2	
11	VALVE PLATE	1	

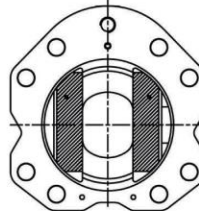
H3V/H5V SERIES



H3V SERIES



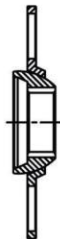
H5V SERIES



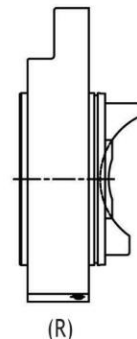
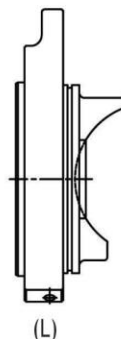
BRASS BRAZING ON THE SLIDE SURFACE
FOR H5V SERIES

CATERPILLAR

H3V
SERIES

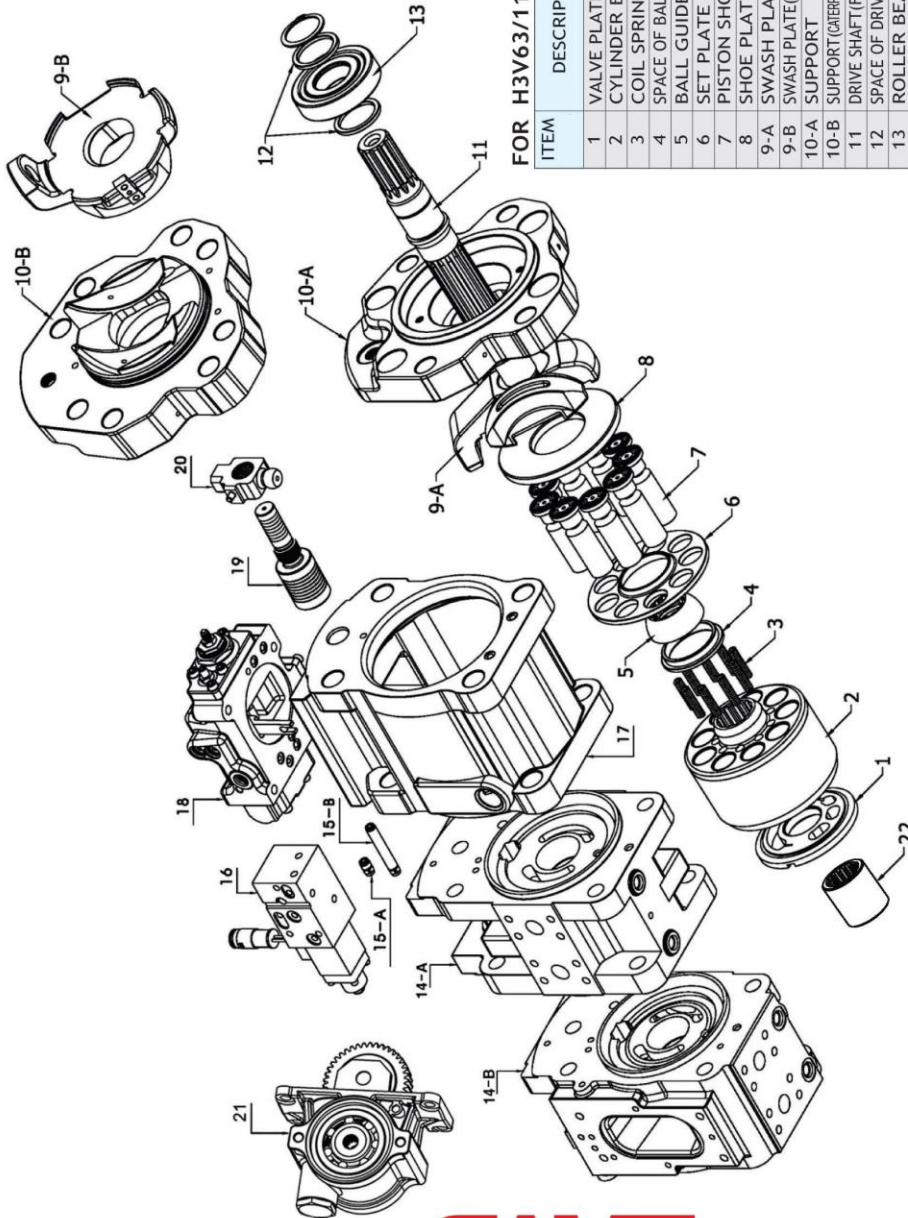


H5V
SERIES



IT IS DIFFERENT ON THE SHAPE BETWEEN THE H3V SERIES AND H5V SERIES

H3V/H5V



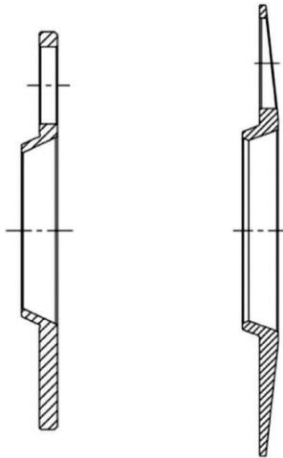
FOR H3V63/112/140/180/280, H5V80/140/180/200

ITEM	DESCRIPTION	QUANTITY	REMARK
1	VALVE PLATE(L/R)	1	
2	CYLINDER BLOCK	1	
3	COIL SPRING	9	
4	SPACE OF BALL GUIDE	1	
5	BALL GUIDE	1	
6	SET PLATE	1	
7	PISTON SHOE	9	
8	SHOE PLATE	1	
9-A	SWASH PLATE	1	
9-B	SWASH PLATE(CATERPILLER)	1	
10-A	SUPPORT	1	
10-B	SUPPORT(CATERPILLER)	1	
11	DRIVE SHAFT(FR/RR)	1	
12	SPACE OF DRIVE SHAFT	1	
13	ROLLER BEARING	2	
14-A	VALVE BLOCK	1	
14-B	VALVE BLOCK(H3V/DTP/H5V SERIES)	1	
15-A	CHECK VALVE-SHORT	1	
15-B	CHECK VALVE-LONG	1	
16	EPR VALVE	1	
17	CASE	1	
18	REGULATOR ASSY	1	
19	SERVO PISTON	1	
20	TILTING PIN	1	
21	PTO BOX ASSY	1	
22	COUPLING	1	

H3V112DP&H5V140/200DP&H5V200DPH



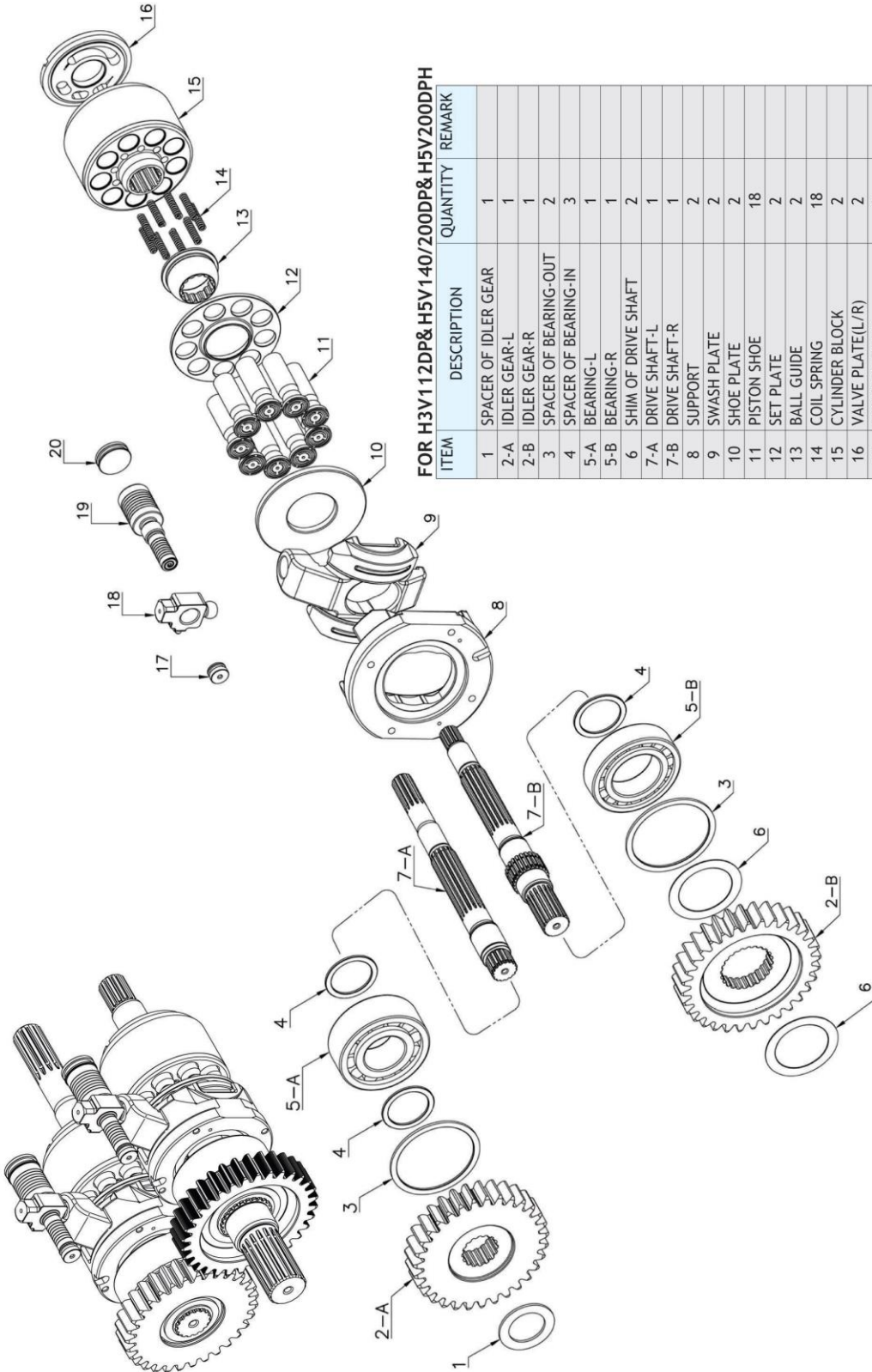
IT IS DIFFERENT ON THE SHAPE
BETWEEN THE H3V SERIES AND H5V SERIES



H3V SERIES

H5V SERIES

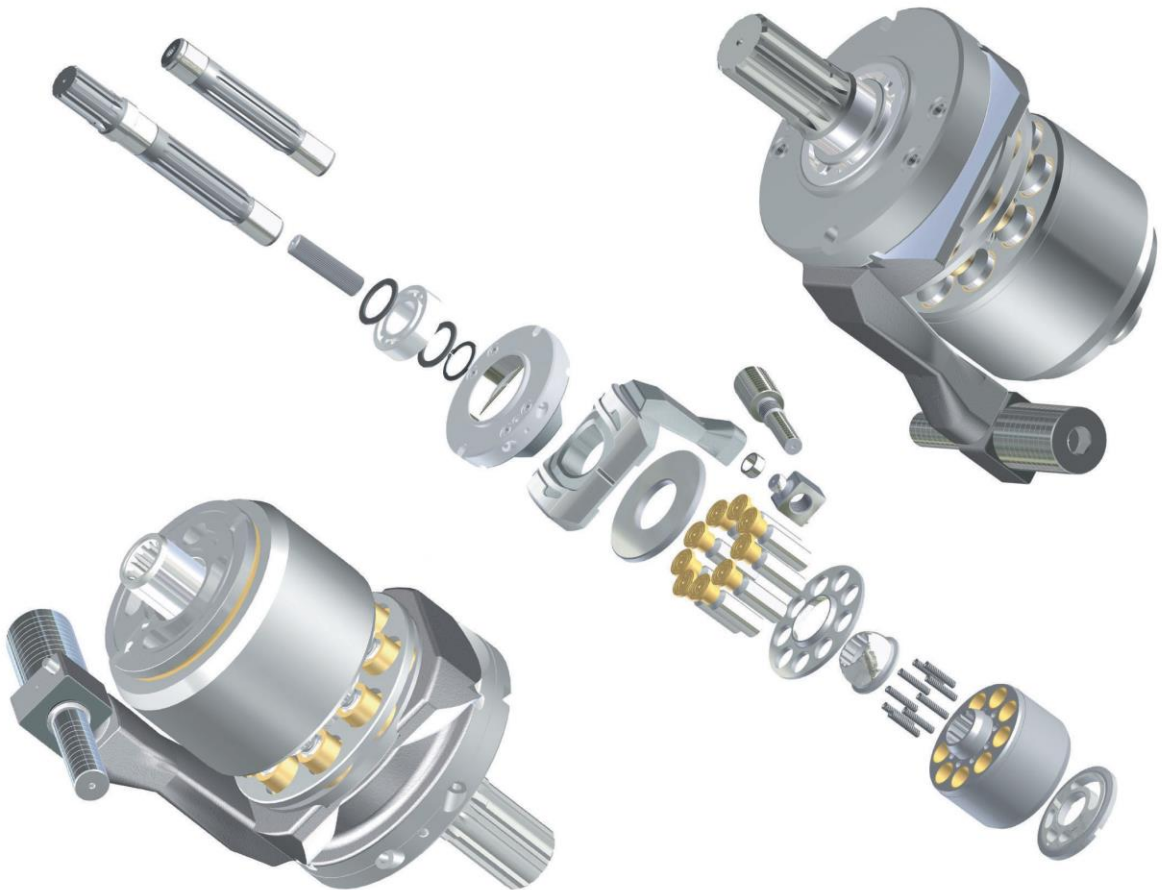
H3V112DP&H5V140/200DP&H5V200DPH



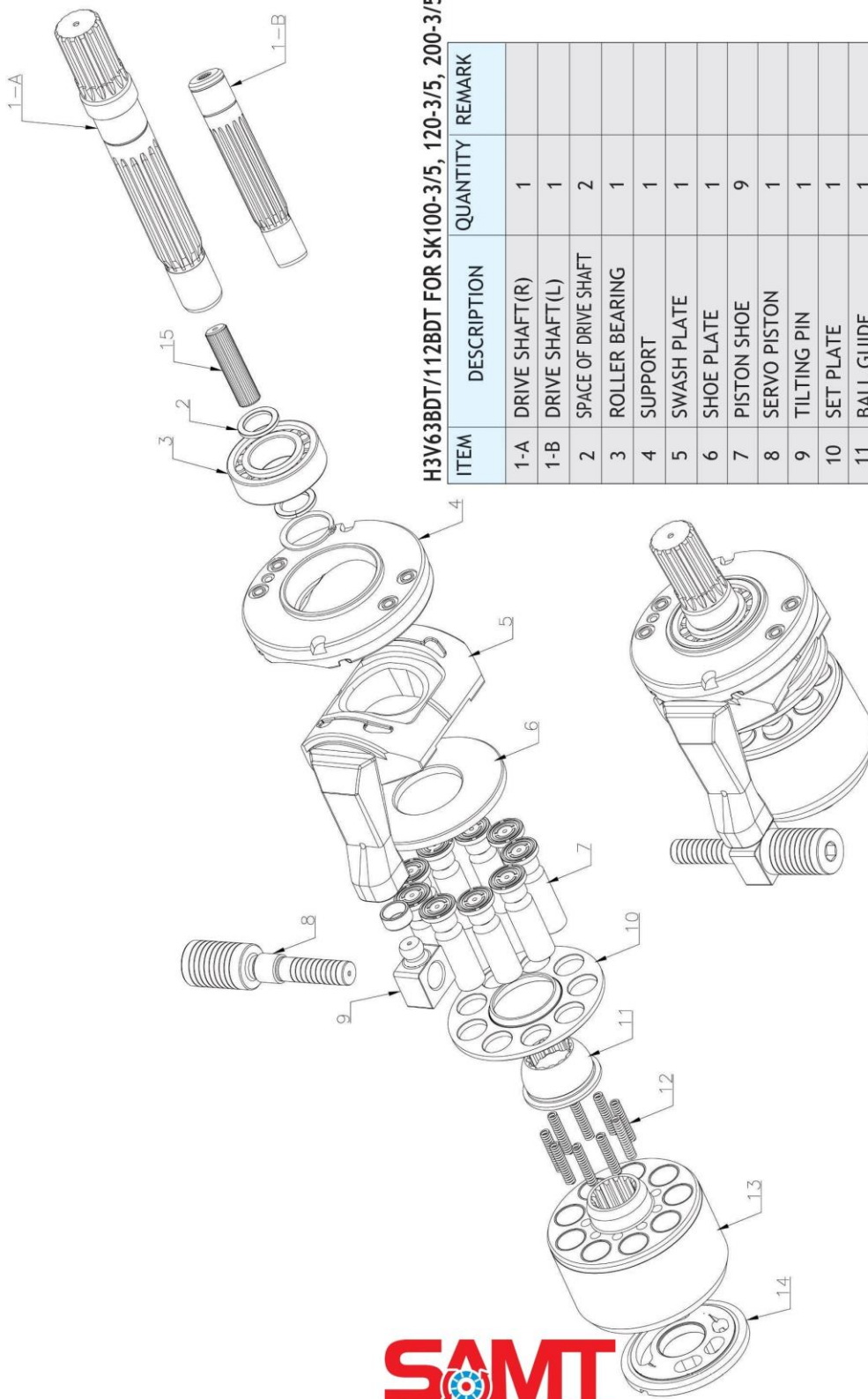
FOR H3V112DP&H5V140/200DP&H5V200DPH

ITEM	DESCRIPTION	QUANTITY	REMARK
1	SPACER OF IDLER GEAR	1	
2-A	IDLER GEAR-L	1	
2-B	IDLER GEAR-R	1	
3	SPACER OF BEARING-OUT	2	
4	SPACER OF BEARING-IN	3	
5-A	BEARING-L	1	
5-B	BEARING-R	1	
6	SHIM OF DRIVE SHAFT	2	
7-A	DRIVE SHAFT-L	1	
7-B	DRIVE SHAFT-R	1	
8	SUPPORT	2	
9	SWASH PLATE	2	
10	SHOE PLATE	2	
11	PISTON SHOE	18	
12	SET PLATE	2	
13	BALL GUIDE	2	
14	COIL SPRING	18	
15	CYLINDER BLOCK	2	
16	VALVE PLATE(L/R)	2	
17	STOPPER-SMALL	2	
18	TILTING PIN	2	
19	SERVO PISTON	2	
20	STOPPER-BIG	2	

H3V63BDT/112BDT FOR KOBELCO



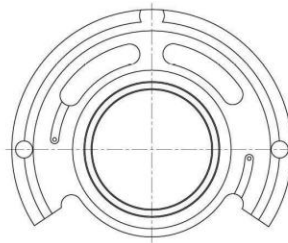
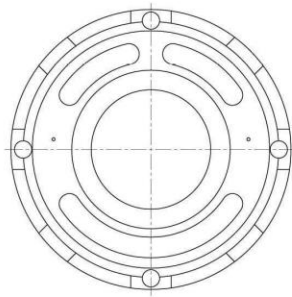
H3V63BDT/112BDT FOR KOBELCO



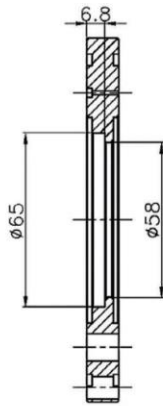
H3V63BDT/112BDT FOR SK100-3/5, 120-3/5, 200-3/5, 220-3/5

ITEM	DESCRIPTION	QUANTITY	REMARK
1-A	DRIVE SHAFT(R)	1	
1-B	DRIVE SHAFT(L)	1	
2	SPACE OF DRIVE SHAFT	2	
3	ROLLER BEARING	1	
4	SUPPORT	1	
5	SWASH PLATE	1	
6	SHOE PLATE	1	
7	PISTON SHOE	9	
8	SERVO PISTON	1	
9	TILTING PIN	1	
10	SET PLATE	1	
11	BALL GUIDE	1	
12	COIL SPRING	9	
13	CYLINDER BLOCK	1	
14	VALVE PLATE	1	
15	COUPLING	1	

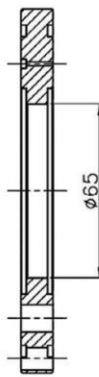
KVC SERIES



DP-TYPE

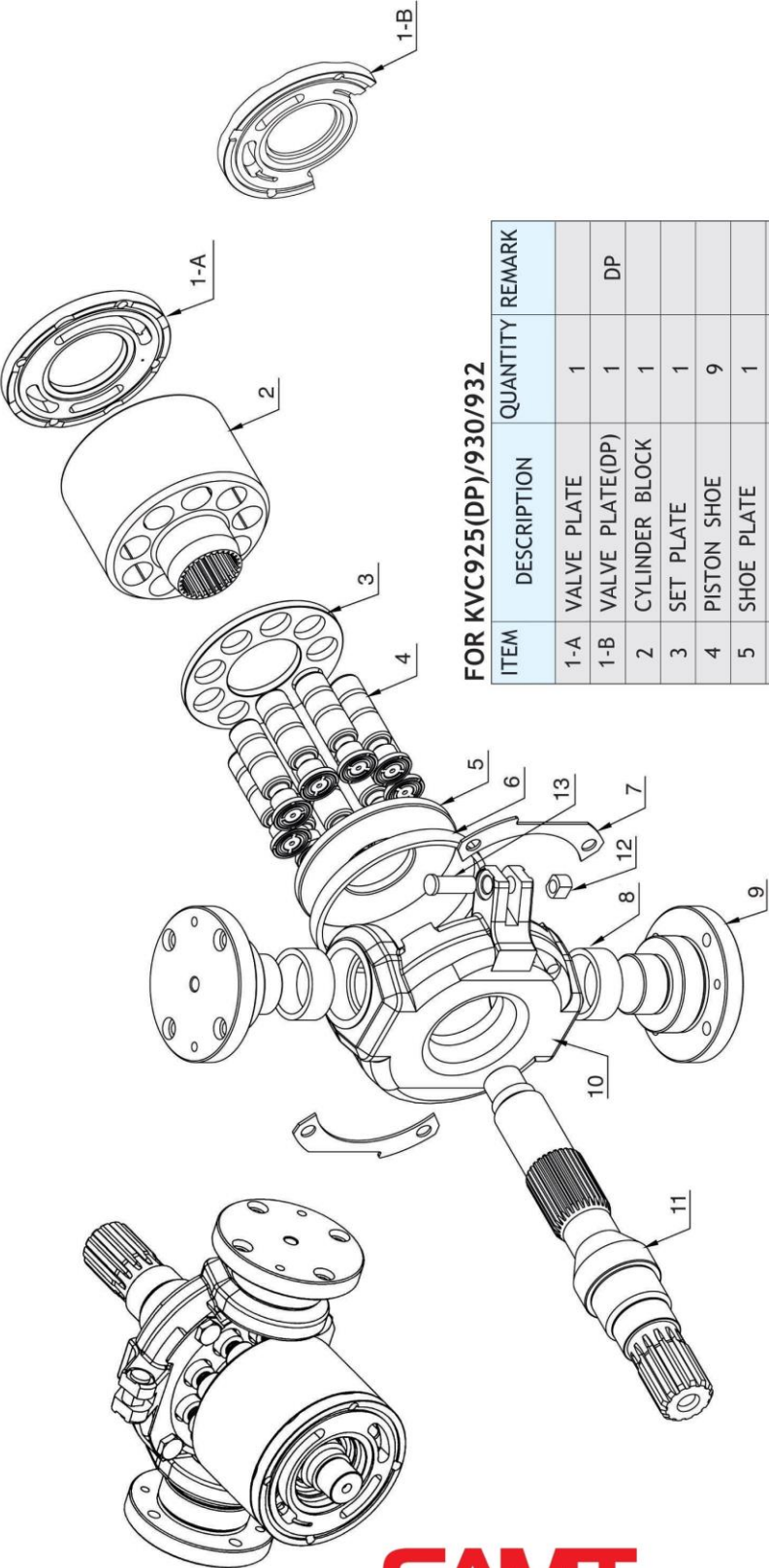


(UH07-3)



(UH07-5)

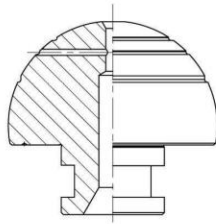
IT IS DIFFERENT ON THE SHAPE BETWEEN THE UH07-3 AND UH07-5 TYPE OF VALVE PLATE



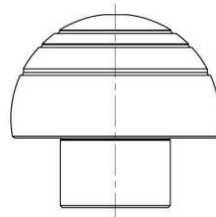
FOR KVC925(DP)/930/932

ITEM	DESCRIPTION	QUANTITY	REMARK
1-A	VALVE PLATE	1	
1-B	VALVE PLATE(DP)	1	DP
2	CYLINDER BLOCK	1	
3	SET PLATE	1	
4	PISTON SHOE	9	
5	SHOE PLATE	1	
6	GUIDE RING	1	KVC930/932
7	FIX PLATE	2	
8	AXLE BUSHING	2	
9	AXLE SHAFT	2	
10	SWASH PLATE	1	
11	DRIVE SHAFT	1	
12	GUIDE PIECE	1	KVC925

K3SP36C



(R)

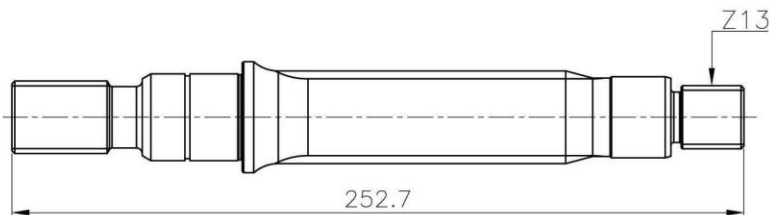


(L)

IT IS DIFFERENT ON THE SHAPE BETWEEN THE R TYPE AND L TYPE ON BALL



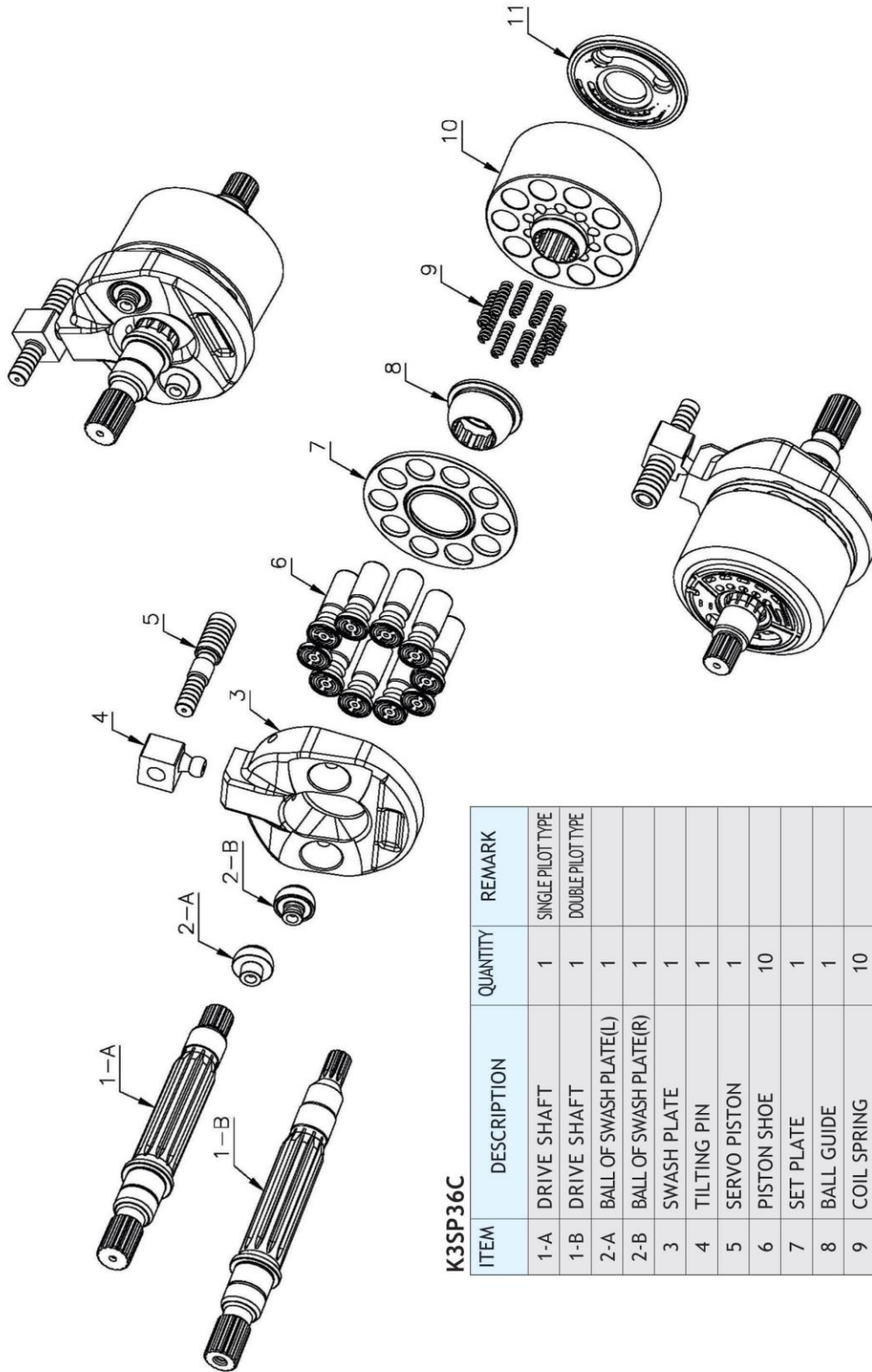
DOUBLE PILOT TYPE



SINGLE PILOT TYPE

IT IS DIFFERENT ON THE SHAPE BETWEEN THE DOUBLE AND SINGLE PILOT TYPE ON DRIVE SHAFT

K3SP36C



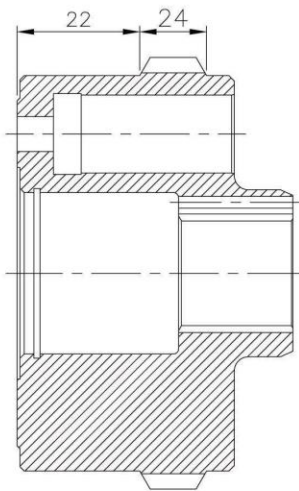
K3SP36C

ITEM	DESCRIPTION	QUANTITY	REMARK
1-A	DRIVE SHAFT	1	SINGLE PILOT TYPE
1-B	DRIVE SHAFT	1	DOUBLE PILOT TYPE
2-A	BALL OF SWASH PLATE(L)	1	
2-B	BALL OF SWASH PLATE(R)	1	
3	SWASH PLATE	1	
4	TILTING PIN	1	
5	SERVO PISTON	1	
6	PISTON SHOE	10	
7	SET PLATE	1	
8	BALL GUIDE	1	
9	COIL SPRING	10	
10	CYLINDER BLOCK	1	
11	VALVE PLATE	1	

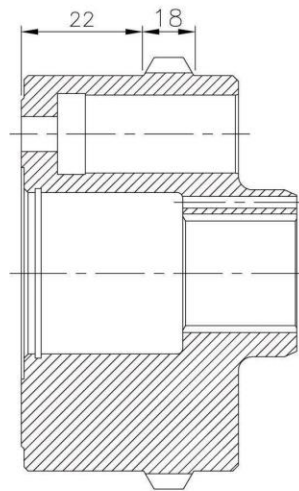
M2X SERIES



IT IS DIFFERENT ON THE SHAPE BETWEEN THE M2X170(CAT TYPE) AND M2X170 PARTS

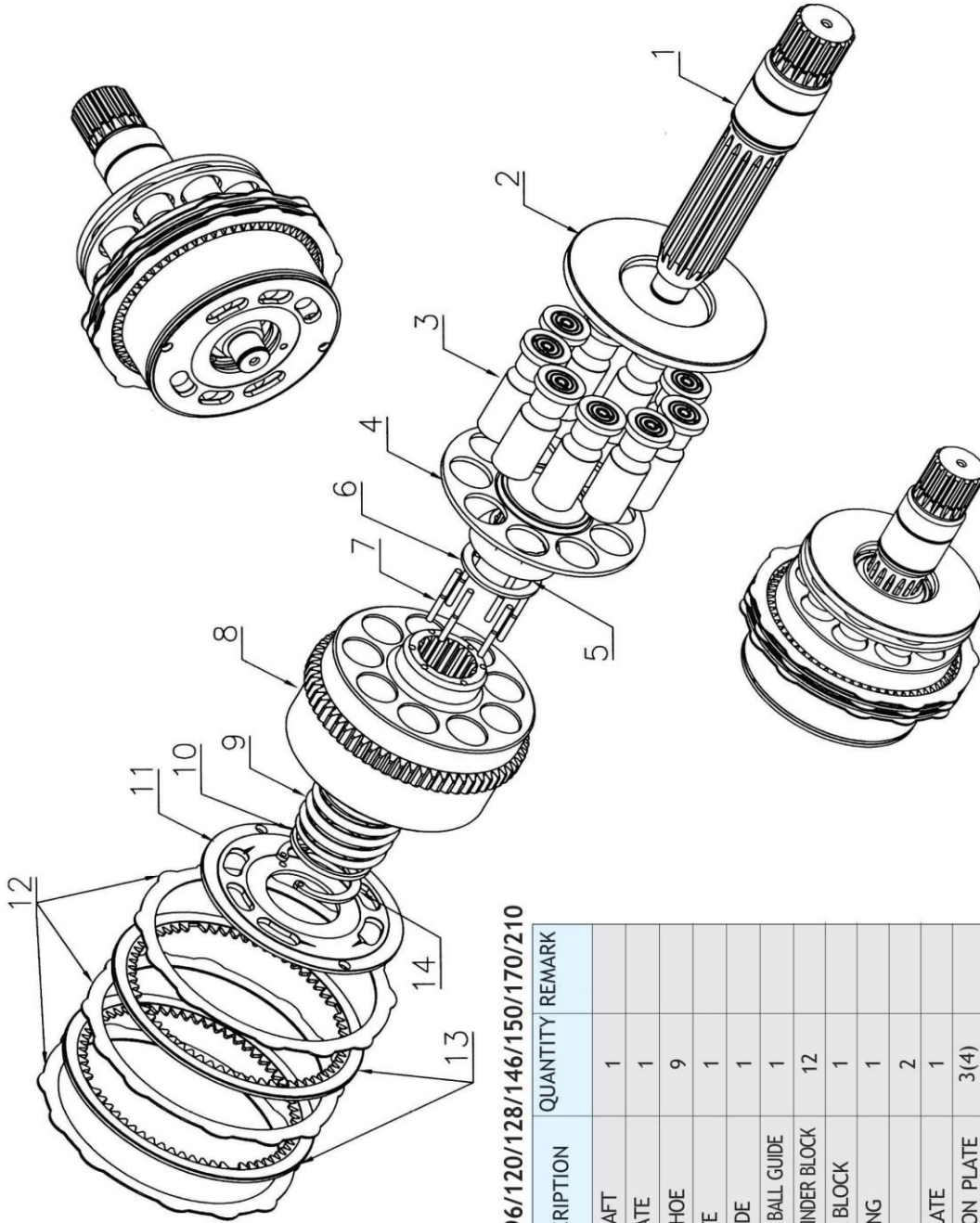


M2X170-CAT TYPE



M2X170

M2X



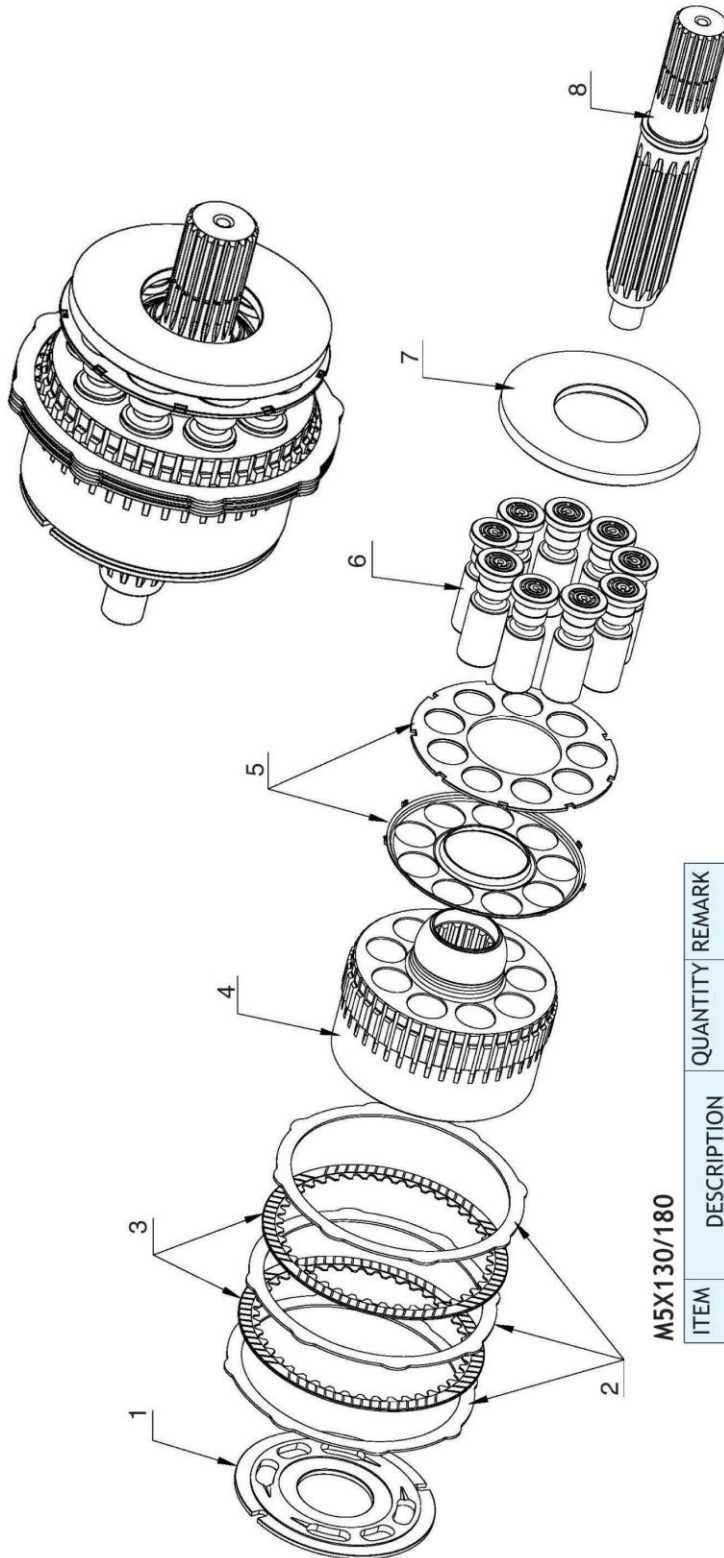
FOR M2X63/96/120/128/146/150/170/210

ITEM	DESCRIPTION	QUANTITY	REMARK
1	DRIVE SHAFT	1	
2	SHOE PLATE	1	
3	PISTON SHOE	9	
4	SET PLATE	1	
5	BALL GUIDE	1	
6	SPACER OF BALL GUIDE	1	
7	PIN OF CYLINDER BLOCK	12	
8	CYLINDER BLOCK	1	
9	COIL SPRING	1	
10	SPACER	2	
11	VALVE PLATE	1	
12	SEPARATION PLATE	3(4)	
13	FRICTION PLATE	2(3)	
14	SNAP RING	1	

M5X130/180

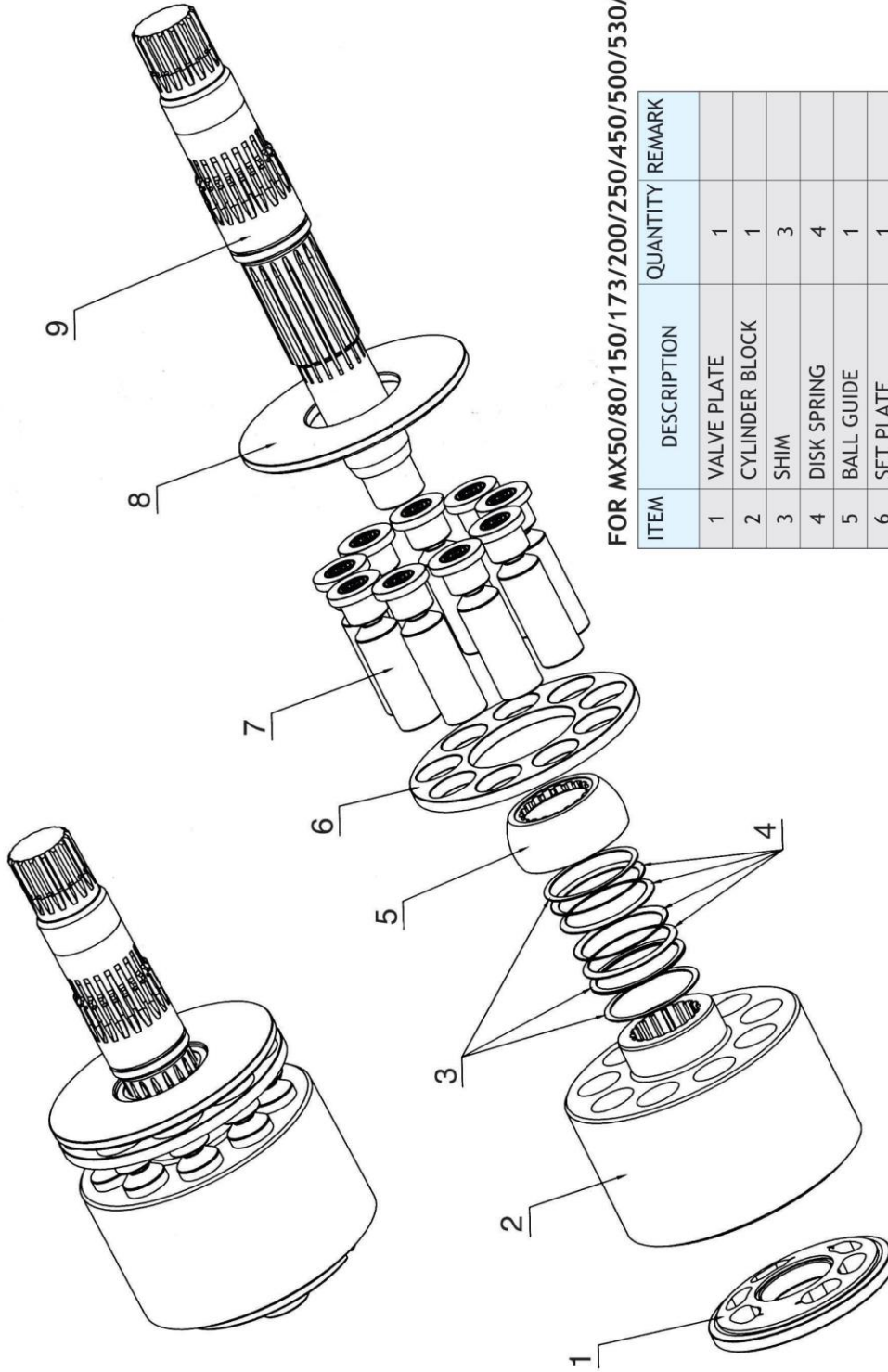


M5X130/180



M5X130/180

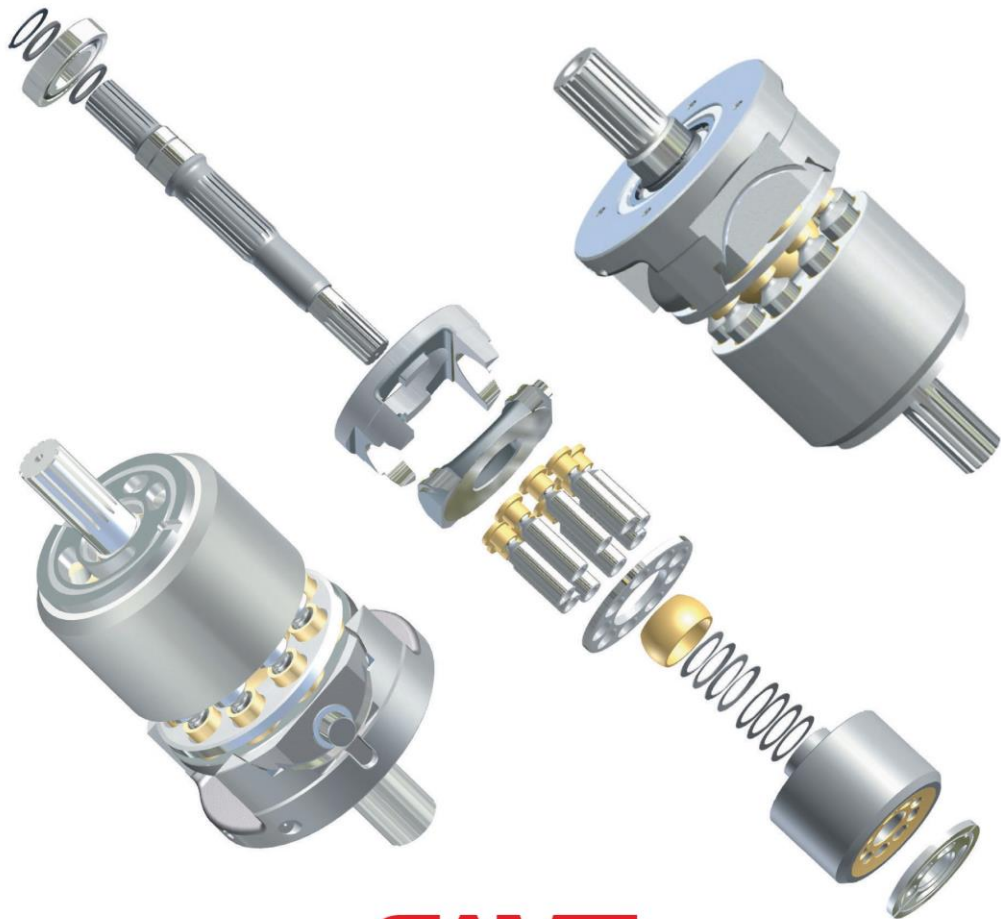
ITEM	DESCRIPTION	QUANTITY	REMARK
1	VALVE PLATE	1	
2	SEPARATION PLATE	3	
3	FRICION PLATE	2	
4	CYLINDER BLOCK	1	
5	SET PLATE WITH SPRING	1SET	
6	PISTON SHOE	9	
7	SHOE PLATE	1	
8	DRIVE SHAFT	1	

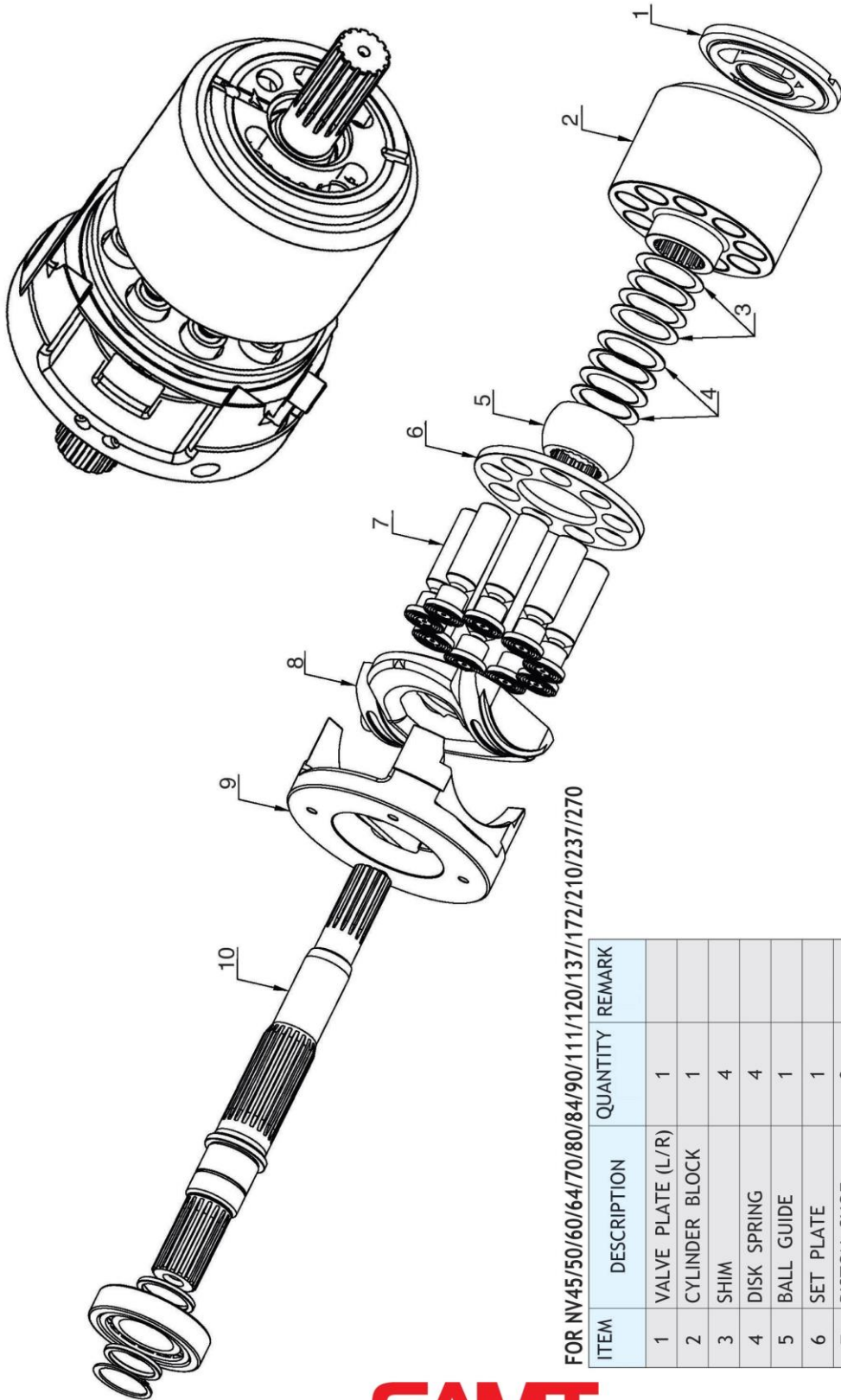


FOR MX50/80/150/173/200/250/450/500/530/750

ITEM	DESCRIPTION	QUANTITY	REMARK
1	VALVE PLATE	1	
2	CYLINDER BLOCK	1	
3	SHIM	3	
4	DISK SPRING	4	
5	BALL GUIDE	1	
6	SET PLATE	1	
7	PISTON SHOE	9	
8	SHOE PLATE	1	
9	DRIVE SHAFT	1	

NV SERIES





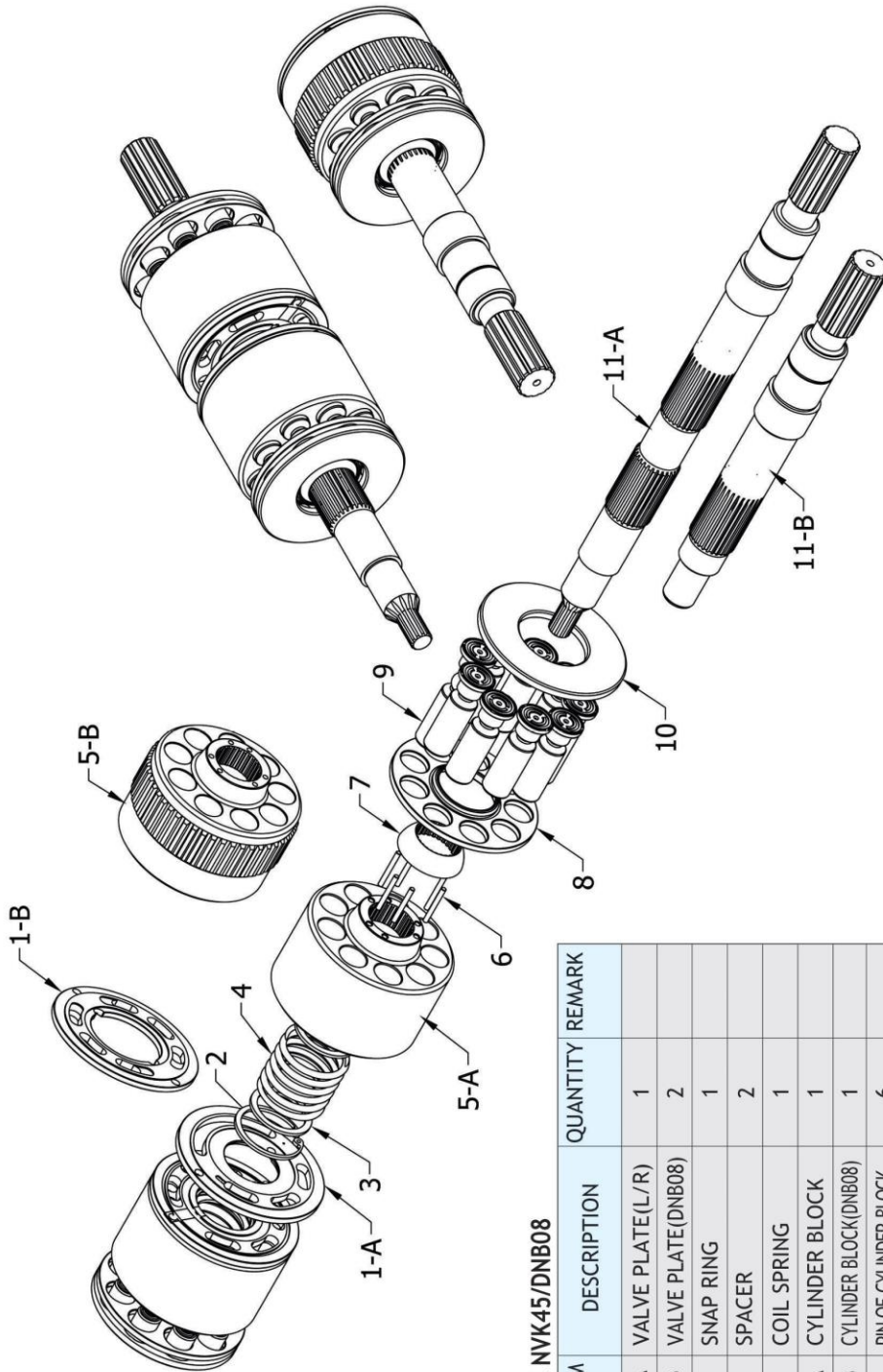
FOR NV45/50/60/64/70/80/84/90/111/120/137/172/210/237/270

ITEM	DESCRIPTION	QUANTITY	REMARK
1	VALVE PLATE (L/R)	1	
2	CYLINDER BLOCK	1	
3	SHIM	4	
4	DISK SPRING	4	
5	BALL GUIDE	1	
6	SET PLATE	1	
7	PISTON SHOE	9	
8	SWASH PLATE	1	
9	SUPPORT	1	
10	DRIVE SHAFT (L/R)	1	

NVK45/DNB08



NVK45/DNB08



FOR NVK45/DNB08

ITEM	DESCRIPTION	QUANTITY	REMARK
1-A	VALVE PLATE (L/R)	1	
1-B	VALVE PLATE (DNB08)	2	
2	SNAP RING	1	
3	SPACER	2	
4	COIL SPRING	1	
5-A	CYLINDER BLOCK	1	
5-B	CYLINDER BLOCK (DNB08)	1	
6	PIN OF CYLINDER BLOCK	6	
7	BALL GUIDE	1	
8	SET PLATE	1	
9	PISTON SHOE	9	
10	SHOE PLATE	1	
11-A	DIRVE SHAFT	1	
11-B	DRIVE SHAFT (DNB08)	1	