



PRESSURE & FLOW CONTROL VALVES





PRESSURE & FLOW CONTROL VALVES

CONTENTS

FLOW CONTROL VALVES

RELIEF VALVES

P/O CHECK VALVES

CHECK VALVES

HOSE BURST VALVES

OVERCENTRE VALVES

PRESSURE SWITCHES

PRIORITY VALVES

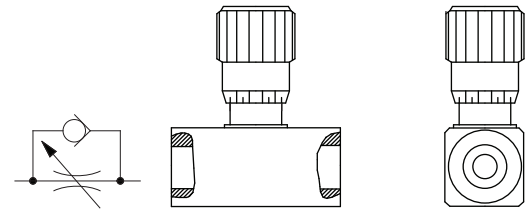
FLOW DIVIDER VALVES

IN-LINE VALVES PRESSURE & FLOW CONTROL



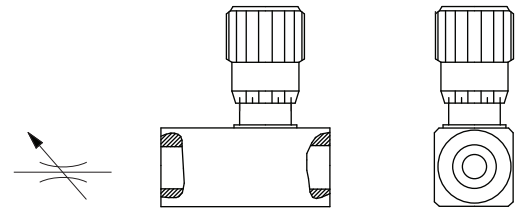
Flow Control Valves - Reverse Flow Check

Part Number & Pricing		Specifications			
Part.	List Price	Ports BSPP	Flow Max LPM	Pressure Max Bar	Weight Kg
DRV6-1-10	\$ 45	1/8"	14	350	0.4
DRV8-1-10	\$ 48	1/4"	20	350	0.4
DRV10-1-10	\$ 55	3/8"	40	350	0.5
DRV12-1-10	\$ 70	1/2"	60	350	0.7
DRV16-1-10	\$ 88	3/4"	100	350	1



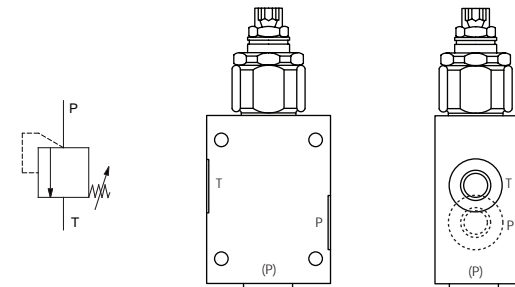
Needle Valves - Controlled Flow Both Ways

Part Number & Pricing		Specifications			
Part.	List Price	Ports BSPP	Flow Max LPM	Pressure Max Bar	Weight Kg
DV6-1-10	\$ 38	1/8"	14	350	0.4
DV8-1-10	\$ 42	1/4"	20	350	0.4
DV10-1-10	\$ 52	3/8"	40	350	0.5
DV12-1-10	\$ 64	1/2"	60	350	0.7
DV16-1-10	\$ 86	3/4"	100	350	1



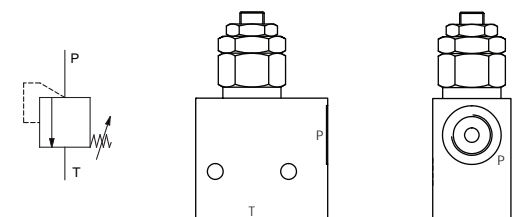
Relief Valves - Steel

Part Number & Pricing		Specifications				
Part.	List Price	Ports BSPP	Description	Flow Max LPM	# Pressure Options Bar	Weight Kg
DBDs6G13 #	\$ 182	1/4"	Valve	35	100/200/315	1.6
DBDs10G13 #	\$ 230	1/2"	Valve	80	100/200/315	3.7
KPP10/32TGB	\$ 260	3/4"	Call Office	160	320	3.7
DBDs20G13 #	\$ 294	1"	Valve	140	100/200/315	6.9
DBDs6K13 #	\$ 126	1/4"	Cartridge	-	100/200/315	0.4
DBDs10K13 #	\$ 150	1/2"	Cartridge	-	100/200/315	0.6
DBDs20K13 #	\$ 205	1"	Cartridge	-	100/200/315	0.9



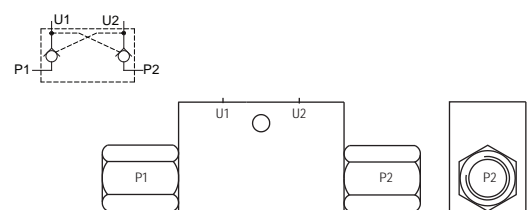
Relief Valves - Alloy

Part Number & Pricing		Specifications			
Part.	List Price	Ports BSPP	Flow Max LPM	Pressure Max Bar	Weight Kg
CPL40/38	\$ 105	3/8"	40	250	0.3



P/O Check Valves - Steel

Part Number & Pricing		Specifications				
Part.	List Price	Ports BSPP	Description	Flow Max LPM	Pressure Max Bar	Weight Kg
KOHU1/4-S	\$ 78	1/4"	SINGLE	15	320	0.6
KOHU3/8-S	\$ 80	3/8"	SINGLE	30	320	0.6
KOHU1/2-S	\$ 106	1/2"	SINGLE	45	320	1.4
KOHU1/4	\$ 98	1/4"	DUAL	15	320	0.7
KOHU3/8	\$ 100	3/8"	DUAL	30	320	0.7
KOHU1/2	\$ 120	1/2"	DUAL	45	320	1.7

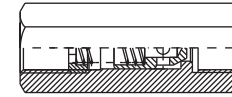


IN-LINE VALVES PRESSURE & FLOW CONTROL



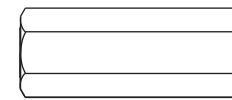
Check Valves

Part Number & Pricing		Specifications				
Part.	List Price	Ports BSPP	Flow Max LPM	Cracking Bar	Pressure Max Bar	Weight Kg
SO6A1	\$ 22	1/4"	25	0.5	350	0.1
SO6A3	\$ 22	1/4"	25	3	350	0.1
SO8A1	\$ 26	3/8"	40	0.5	350	0.2
SO8A3	\$ 26	3/8"	40	3	350	0.2
SO10A1	\$ 32	1/2"	60	0.5	350	0.4
SO10A3	\$ 32	1/2"	60	3	350	0.4
SO15A1	\$ 40	3/4"	100	0.5	350	0.5
SO15A3	\$ 40	3/4"	100	3	350	0.5
SO20A1	\$ 62	1"	150	0.5	350	0.7
SO20A3	\$ 62	1"	150	3	350	0.7



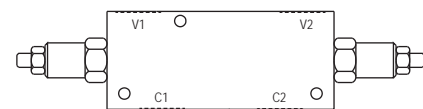
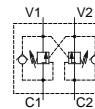
Hose Burst Valves

Part Number & Pricing		Specifications				
Part.	List Price	Ports BSPP	Description	Flow Max LPM	Pressure Max Bar	Weight Kg
HC870-1/4-TMB	\$ 35	1/4"	Female Female	25	350	0.1
HC870-3/8-TMB	\$ 35	3/8"	Female Female	50	350	0.2
HC870-1/2-TMB	\$ 45	1/2"	Female Female	80	350	0.2
HC870-3/4-TMB	\$ 50	3/4"	Female Female	150	350	0.5



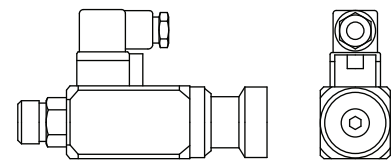
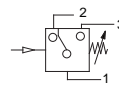
Overcentre Valves - Alloy

Part Number & Pricing		Specifications				
Part.	List Price	Ports BSPP	Description	Flow Max LPM	Pressure Max Bar	Weight Kg
OWC-SE/L38	\$ 145	3/8"	Single	40	250	0.6
OWC-SE/L12	\$ 168	1/2"	Single	60	250	0.8
OWC-SE/L34	\$ 238	3/4"	Single	120	250	1.3
OWC-DE/L38	\$ 225	3/8"	Dual	40	250	0.8
OWC-DE/L12	\$ 245	1/2"	Dual	60	250	1.1
OWC-DE/L34	\$ 348	3/4"	Dual	120	250	2.6



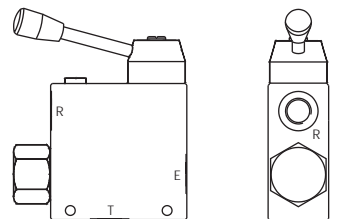
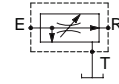
Pressure Switches

Part Number & Pricing		Specifications		
Part.	List Price	Ports BSPP	Pressure Range Bar	Weight Kg
DNA-100K-22B	\$ 180	1/4"	15-100	1.1
DNA-250K-22B	\$ 180	1/4"	40-250	1.1
DNA-360K-22B	\$ 180	1/4"	50-360	1.1



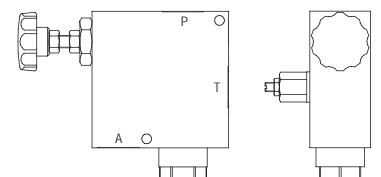
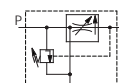
Priority - 3 Way Handle Operated

Part Number & Pricing		Specifications			
Part.	List Price	Ports BSPP	Priority Max LPM	Pressure Max Bar	Weight Kg
RD10/3T	\$ 340	3/8"	30	210	1.2



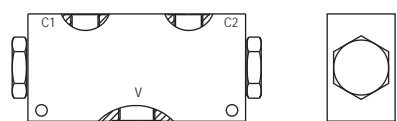
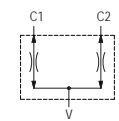
Priority - 3 way Knob Operated

Part Number & Pricing		Specifications				
Part.	List Price	Ports BSPP	Flow Max LPM	Priority Max LPM	Pressure Max Bar	Weight Kg
VRFC3/V/VS12	\$ 340	1/2"	90	50	250	2.3
VRFC3/V/VS34	\$ 460	3/4"	150	90	250	4.1



Flow Divider

Part Number & Pricing		Specifications				
Part.	List Price	Ports BSPP	Ports Outlet BSPP	Flow Max LPM	Pressure Max Bar	Weight Kg
FDC10-12-40	\$ 215	1/2"	3/8"	40	210	0.9



BOLTS



CETOP BOLT KITS

Part Number & Pricing	
Part.	List Price
M5 # 45	\$ 8
M5 # 75	\$ 12
M5 # 85	\$ 12
M5 # 85	\$ 12
M5 # 85	\$ 12
M5 # 100	\$ 20
M6 # 40	\$ 9
M6 # 80	\$ 15
M6 # 90	\$ 15
M6 # 90	\$ 15
M6 # 35	\$ 9
M6 # 75	\$ 15
M6 # 85	\$ 15
M6 # 85	\$ 15
M6 # 60 + M10 # 60	\$ 19

Specifications	
Qty	Description
4	CETOP 3 [DOFLUID AND INTERNATIONAL]
4	CETOP 3 + FLOW CONTROL
4	CETOP 3 + RELIEF VALVE
4	CETOP 3 + P/O CHECK
4	CETOP 3 + PRESSURE REDUCING VALVE
4	CETOP 3 + P/O OVERCENTRE VALVE
4	CETOP 5 [INTERNATIONAL]
4	CETOP 5 + FLOW CONTROL
4	CETOP 5 + RELIEF VALVE
4	CETOP 5 + P/O CHECK
4	CETOP 5 [DOFLUID]
4	CETOP 5 + FLOW CONTROL
4	CETOP 5 + RELIEF VALVE
4	CETOP 5 + P/O CHECK
2 + 4	CETOP 7 [INTERNATIONAL]

M + S BOLT KITS

MOTORS

Part Number & Pricing	
Part.	List Price
M8 # 35	\$ 14
M10 # 40	\$ 16
M12 # 45	\$ 16
M8 # 50	\$ 14
M10 # 50	\$ 16
M12 # 70	\$ 18
M8 # 40	\$ 14
M10 # 35	\$ 14
M10 # 70	\$ 16
M12 # 75	\$ 18

Specifications	
Qty	Description
4	KPWR - SWITCH VALVE
2 & 4	KPWS & KPWT - SWITCH VALVE
4	KPWV - SWITCH VALVE
4	KPBR - OVERCENTRE VALVE
2 & 4	KPBS & KPBT - OVERCENTRE VALVE
4	KPBV - OVERCENTRE VALVE
4	KPDR (KPER) - RELIEF VALVE
2	KPDS - RELIEF VALVE
4	KPDT - RELIEF VALVE
4	KPDV - RELIEF VALVE

BRAKES

Part Number & Pricing	
Part.	List Price
M12 # 30	\$ 14
M10 # 35	\$ 14
M14 # 8.8	\$ 18

Specifications	
Qty	Description
2 - 4	LB 288 - MOTOR INPUT
4	LB 289 / 290 - MOTOT INPUT
4	LBS 314 / 315 - MOTOR INPUT

STEERING UNITS

Part Number & Pricing	
Part.	List Price
M10 # 1 # 40	\$ 34

Specifications	
Qty	Description
2	HKU - DIRECT MOUNTED BLOCK [1mm PITCH]

SAMT



H Y D R A U L I C S

Factory 19 / 5 Lyn Parade PRESTONS NSW 2170
Ph: (02) 9607 4100 Fax: (02) 9607 4200