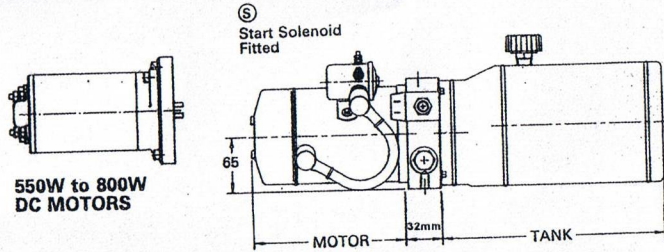


Basic Universal Range

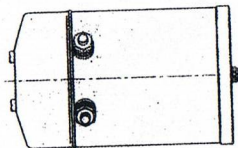


SM05	12V 550W
SM06	24V 550W
SM08	12V 800W
SM09	24V 800W



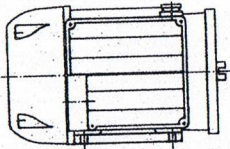
550W to 800W DC MOTORS

SM11	12V 1 Terminal
SM12	12V 2 Terminal
SM15	24V 1 Terminal
SM16	24V 2 Terminal
SM30	12V 2 Terminal
SM32	24V 2 Terminal



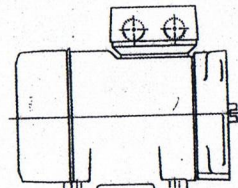
1.5kW to 3kW DC MOTORS

SM43	0,37kW
SM45	0,75kW
SM46	1,1kW
SM47	1,5kW
SM48	2,2kW



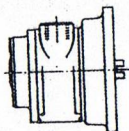
TYPICAL 1ph. AC MOTOR

SM53	0,37kW
SM55	0,75kW
SM56	1,1kW
SM57	1,5kW
SM58	2,2kW



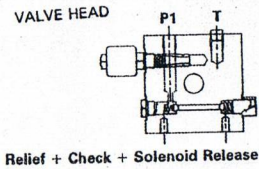
TYPICAL 3ph. AC MOTOR

SM80	V2
SM81	V4
SM82	V6

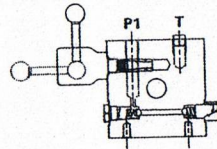


VANE AIR MOTOR

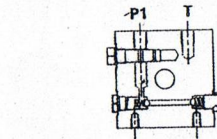
NOTE: All ports 1/8" PT



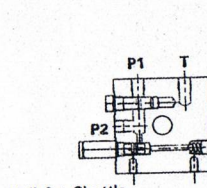
Relief + Check + Solenoid Release



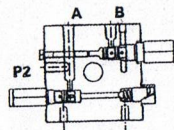
Relief + Check + Manual Release



Relief + Check ONLY

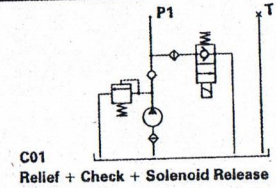
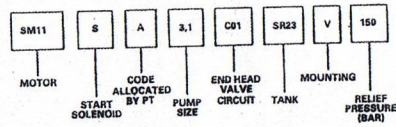


Relief + Shuttle

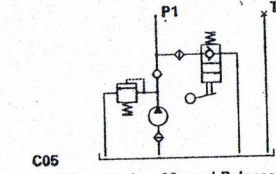


Relief + Shuttle + Sequence

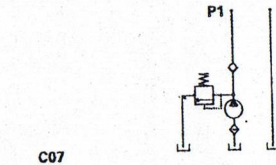
CODING SYSTEM



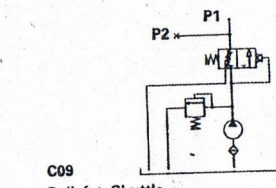
C01 Relief + Check + Solenoid Release



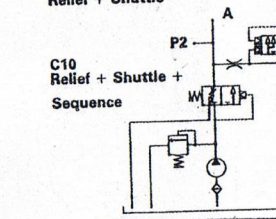
C05 Relief + Check + Manual Release



C07 Relief + Check ONLY

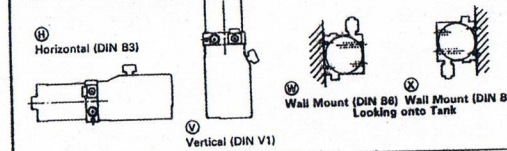


C09 Relief + Shuttle

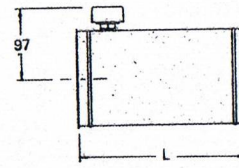


C10 Relief + Shuttle + Sequence

MOUNTING POSITIONS

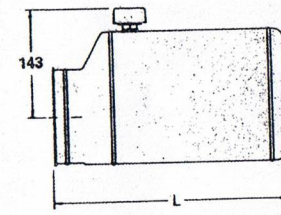


Ø 120 TANKS



TANK CODE	L	Usable Capacity	
		Horiz.	Vert.
SR11	153	1,0	0,5
SR12	216	1,4	1,3
SR14	300	2,1	2,3
SR16	460	3,4	3,4

Ø 170 TANKS



TANK CODE	L	Usable Capacity	
		Horiz.	Vert.
SR40	200	2,7	2,3
SR41	300	4,6	4,5
SR42	400	6,5	6,7
SR43	550	9,3	10,0

NOTE: Other tank capacities are available. All capacities quoted are USABLE volumes.

NOTE: Other valve configurations are available using Cetop valves.