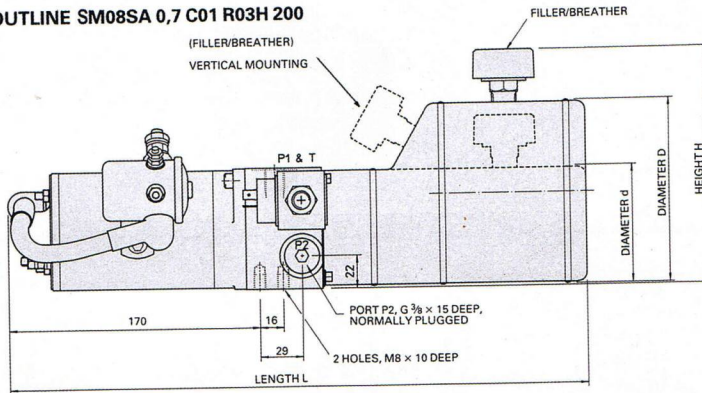
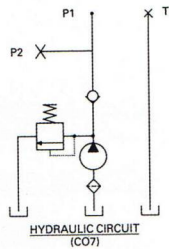
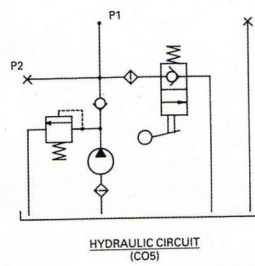
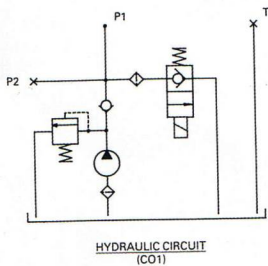


MICRO PACK OUTLINE SM08SA 0,7 C01 R03H 200



AVAILABLE CIRCUITS



A VERSION OF THE MICRO PACK IS AVAILABLE TO WHICH CETOP 3 VALVES CAN BE DIRECTLY MOUNTED.

MICROPACK TANKS

| CODE | Usable Capacity(C) | | D | d | H | L |
|------|--------------------|--------|-----|----|-----|-----|
| | Vert. | Horiz. | | | | |
| SRO1 | — | 0,5 | — | 80 | 116 | 376 |
| SRO2 | — | 1,0 | — | 80 | 116 | 476 |
| SRO3 | 0,9 | 1,2 | 123 | — | 160 | 332 |
| SRO5 | 1,9 | 2,0 | 123 | — | 160 | 480 |
| SRO6 | 2,9 | 2,9 | 123 | — | 160 | 572 |