

HIGH TORQUE MOTORS Made in Europe

MM Series Replaces Danfoss OMM Series



Standard Pricing: Shaft 16mm Straight Keyed, Mount 3Bolt, Ports 3/8" BSPP, Case 1/8" BSPP

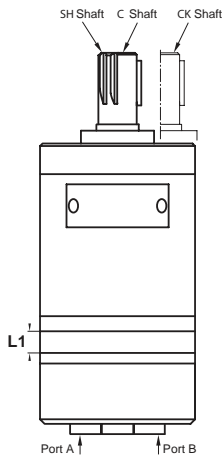
Part Number		Specifications							
Part Number		CC/Rev	Rotor Width L1 - mm	Speed Max Cont RPM	Flow Max Cont LPM	Pressure Drop Max Cont Bar	Inlet Pressure Max Cont Bar	Torque Max Cont Nm	Weight Kg
MM 8 C		8.2	3.5	1950	16	105	140	11	2
MM 12.5 C		12.9	5.5	1550	20	105	140	16	2.1
MM 20 C		20	8.5	1000	20	105	140	25	2.2
MM 32 C		31.8	13.5	630	20	105	140	40	2.3
MM 40 C		40	17	500	20	82.5	140	41	2.4
MM 50 C		50	21	400	20	70	140	45	2.6

* To assure best motor life, fill with fluid and run at moderate load for 5-10 minutes.

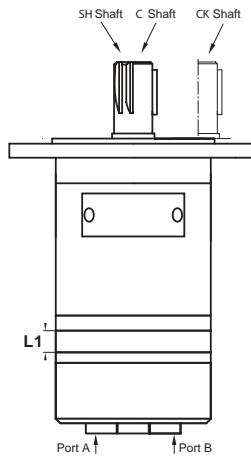
Code Builder:

MM		OPTION		MOUNTING A		PORTS		DISPLACEMENT 8-50 CC		SHAFTS		MOUNTING B		SERIES	
OPTION		MOUNTING A		PORTS		SHAFTS		MOUNTING B							
Code	Description	Code	Description	Code	Description	Code	Description	Code	Description	Code	Description	Code	Description	Code	Description
D	Dual Cross Line Relief	-	Round 3Bolt 31.5mm Spigot	-	-	Rear Ports 3/8" BSPP	-	-	-	C	16mm Keyed	-	-5	Round 5Bolt M6	
F	Oval 2Hole 63mm Spigot			S	Side Ports 3/8" BSPP			CK	14mm Keyed						
								SH	16.5mm 9T Splined						

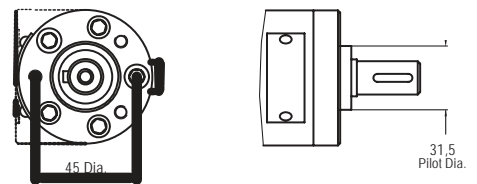
Standard Mount - MM Series



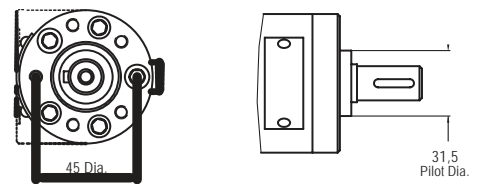
F Mount - MMF Series



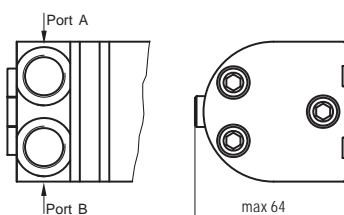
Standard Mount, M6 3Bolt



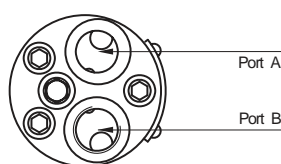
-5 - Mount, M6 5Bolt



S - Side Ports



Standard - Rear Ports



F - Mount, 2Hole

