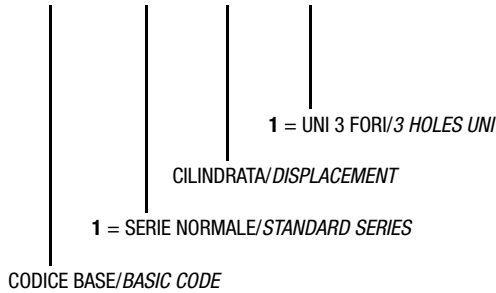




# SERIE P1-3F 3.1.6.1.

CODICE DI ORDINAZIONE - DECODING

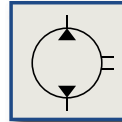
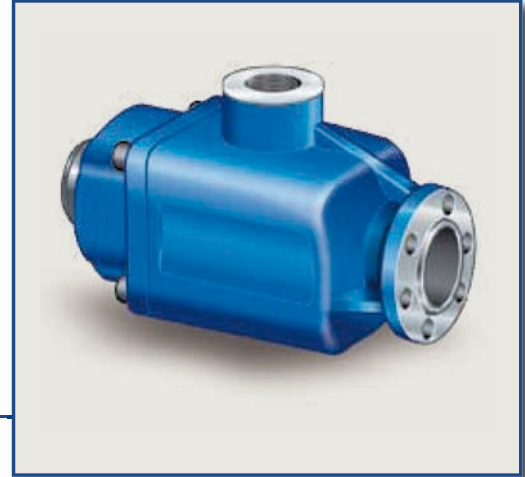
3.1.6.1.XXX.1.0.00



**UNI**  
21-222

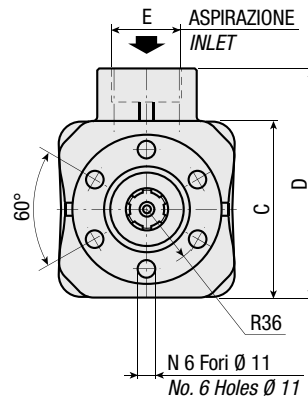
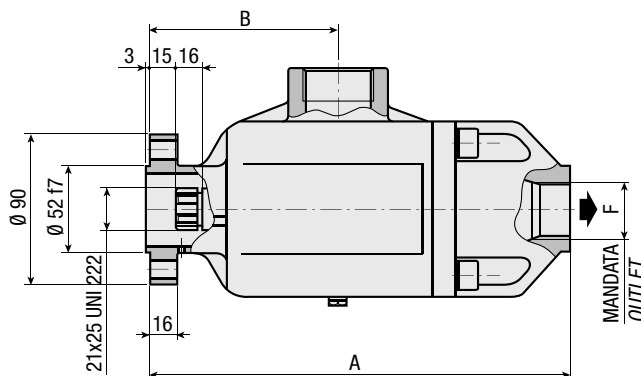
P1 19-3F  
P1 25-3F  
P1 37-3F  
P1 50-3F  
P1 60-3F

**Pompa a Pistoni**  
**Piston Pump**



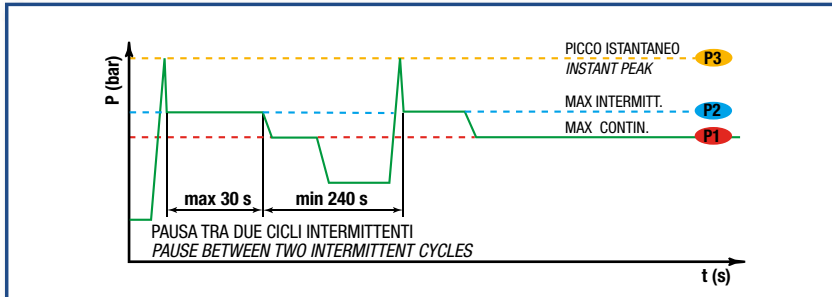
## CARATTERISTICHE E DATI TECNICI - SPECIFICATIONS AND TECHNICAL DATA

TIPO TYPE	CODICE CODE	CILINDRATA DISPLACEMENT cm <sup>3</sup> /rev.	A mm	B mm	C mm	D mm	E ASPIRAZIONE INLET	F MANDATA OUTLET	PESO WEIGHT kg
P1 19-3F	3.1.6.1.019.1.0.00	19	253	113	106	138	1" 1/4 G	1" G	10.0
P1 25-3F	3.1.6.1.025.1.0.00	25							
P1 37-3F	3.1.6.1.037.1.0.00	37							
P1 50-3F	3.1.6.1.050.1.0.00	50							
P1 60-3F	3.1.6.1.060.1.0.00	60							



### DATI TECNICI - TECHNICAL DATA

#### ESEMPIO CICLI LAVORO - EXAMPLE OF WORKING CYCLES



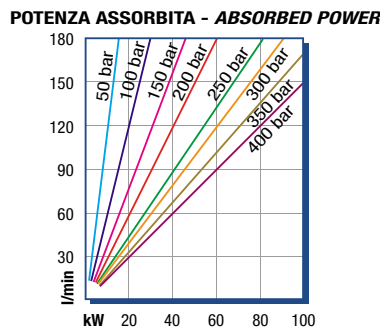
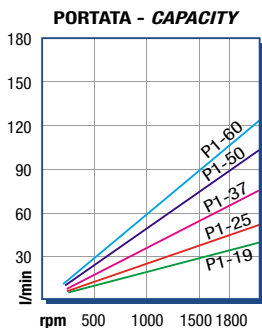
Pressione d'aspirazione: <i>Inlet pressure:</i>	0.7 ÷ 1.5 bar (assoluti/absolute)
Campo viscosità lavoro: <i>Operating viscosity range:</i>	12 ÷ 100 cSt
Temperatura fluido °C (t): <i>Fluid temperature °C (t):</i>	-10° + 80° C

Pressione Lavoro <i>Working Press.</i>	P2	Contaminazione - Contamination		Filtro - Filter $\beta_x = 75$
		NAS 1638	ISO 4406	
≤ 200 bar		12	21/18	40 μm
≥ 200 bar		11	20/17	25 μm

◀ **FILTRAZIONE CONSIGLIATA** (ritorno o mandata)  
**RECOMMENDED FILTERING** (return or outlet)

TIPO - TYPE			P1 19-3F	P1 25-3F	P1 37-3F	P1 50-3F	P1 60-3F	
Cilindrata <i>Displacement</i>	Vg	cm <sup>3</sup> /n cm <sup>3</sup> /rev.	19	25	37	50	60	
Pressione massima continua <i>Max continuous operating pressure</i>	P1	bar	350	350	350	350	300	
Pressione massima intermittente <i>Max intermitt. operating pressure</i>	(max 30 s)		P2	400	400	400	400	350
Pressione massima di picco <i>Max peak pressure</i>	(≤ 0.1 s)		P3	450	450	450	450	400
Velocità massima intermittente <i>Max intermittent speed</i>	(P ≤ 20 bar)	n3	2200	2200	2200	2200	2100	
Velocità massima continua <i>Max continuous speed</i>	(≤ P1)	n1	1800	1800	1800	1800	1700	
Velocità minima intermittente <i>Min intermittent speed</i>	(≤ P2 x 0.5) (max 30 s)	n4	400	400	400	400	400	

### DIAGRAMMI - DIAGRAMS



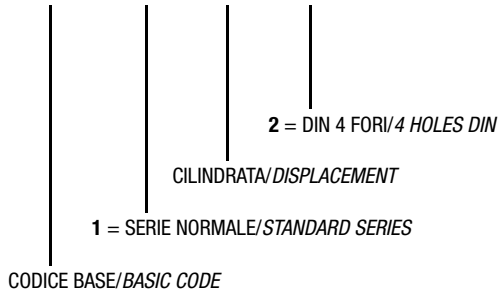
RILIEVI ESEGUITI CON OLIO  
ISO VG 46 A 50° C ( $\nu=30$  cSt)  
THE ABOVE SPECIFICATIONS  
REFER TO OIL TYPE ISO  
VG 46 AT 50° C ( $\nu=30$  cSt)



# SERIE P1-4D 3.1.6.1.

CODICE DI ORDINAZIONE - DECODING

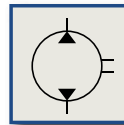
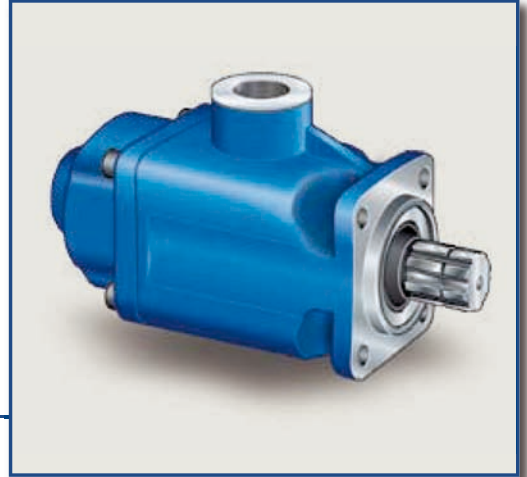
3.1.6.1.XXX.2.0.00



DIN  
5 4 6 2  
SE

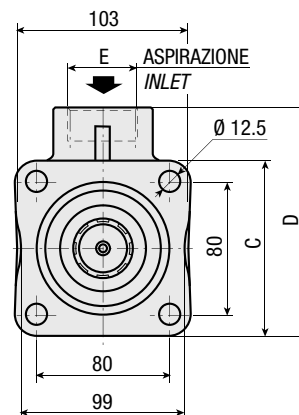
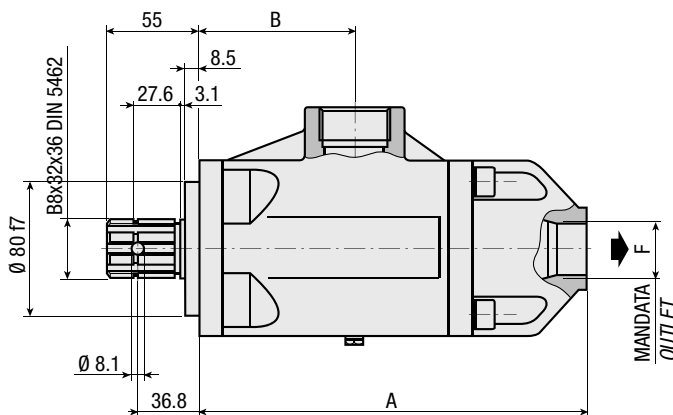
- P1 19-4D
- P1 25-4D
- P1 37-4D
- P1 50-4D
- P1 60-4D

**Pompa a Pistoni**  
**Piston Pump**



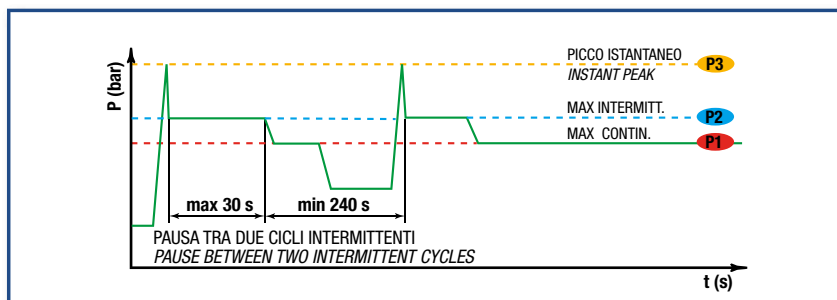
## CARATTERISTICHE E DATI TECNICI - SPECIFICATIONS AND TECHNICAL DATA

TIPO TYPE	CODICE CODE	CILINDRATA DISPLACEMENT cm <sup>3</sup> /rev.	A mm	B mm	C mm	D mm	E ASPIRAZIONE INLET	F MANDATA OUTLET	PESO WEIGHT kg
P1 19-4D	3.1.6.1.019.2.0.00	19	232.5	92.5	106	138	1" 1/4 G	1" G	10.5
P1 25-4D	3.1.6.1.025.2.0.00	25							
P1 37-4D	3.1.6.1.037.2.0.00	37							
P1 50-4D	3.1.6.1.050.2.0.00	50							
P1 60-4D	3.1.6.1.060.2.0.00	60							



### DATI TECNICI - TECHNICAL DATA

#### ESEMPIO CICLI LAVORO - EXAMPLE OF WORKING CYCLES



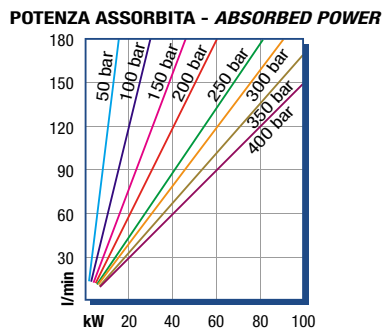
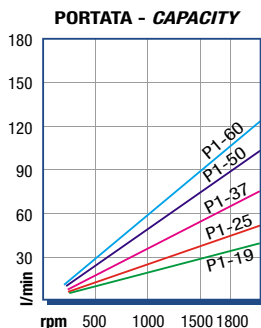
Pressione d'aspirazione: <i>Inlet pressure:</i>	0.7 ÷ 1.5 bar (assoluti/absolute)
Campo viscosità lavoro: <i>Operating viscosity range:</i>	12 ÷ 100 cSt
Temperatura fluido °C (t): <i>Fluid temperature °C (t):</i>	-10° + 80° C

Pressione Lavoro <i>Working Press.</i>	P2	Contaminazione - Contamination		Filtro - Filter $\beta_x = 75$
		NAS 1638	ISO 4406	
≤ 200 bar		12	21/18	40 μm
≥ 200 bar		11	20/17	25 μm

◀ FILTRAZIONE CONSIGLIATA (ritorno o mandata)  
*RECOMMENDED FILTERING (return or outlet)*

TIPO - TYPE			P1 19-4D	P1 25-4D	P1 37-4D	P1 50-4D	P1 60-4D	
Cilindrata <i>Displacement</i>	Vg	cm <sup>3</sup> /n cm <sup>3</sup> /rev.	19	25	37	50	60	
Pressione massima continua <i>Max continuous operating pressure</i>	P1	bar	350	350	350	350	300	
Pressione massima intermittente <i>Max intermitt. operating pressure</i>	(max 30 s)		P2	400	400	400	400	350
Pressione massima di picco <i>Max peak pressure</i>	(≤ 0.1 s)		P3	450	450	450	450	400
Velocità massima intermittente <i>Max intermittent speed</i>	(P ≤ 20 bar)	n3	2200	2200	2200	2200	2100	
Velocità massima continua <i>Max continuous speed</i>	(≤ P1)	n1	1900	1800	1800	1800	1700	
Velocità minima intermittente <i>Min intermittent speed</i>	(≤ P2 x 0.5) (max 30 s)	n4	400	400	400	400	400	

### DIAGRAMMI - DIAGRAMS



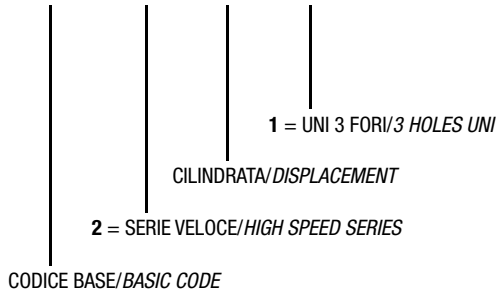
RILIEVI ESEGUITI CON OLIO  
ISO VG 46 A 50° C ( $\nu=30$  cSt)  
THE ABOVE SPECIFICATIONS  
REFER TO OIL TYPE ISO  
VG 46 AT 50° C ( $\nu=30$  cSt)



# SERIE P1-3F 3.1.6.2.

CODICE DI ORDINAZIONE - DECODING

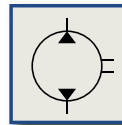
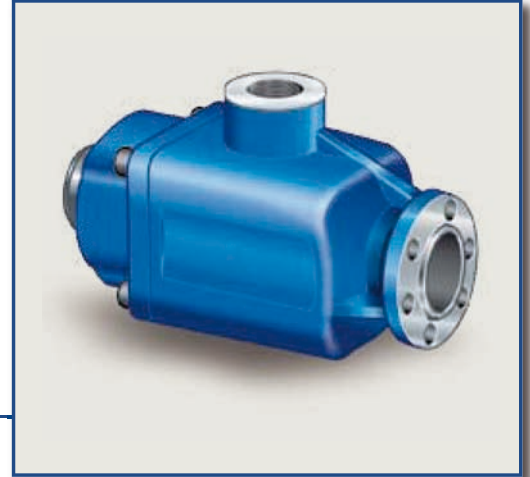
3.1.6 . 2 . XXX . 1 . 0 . 00



UNI  
21-222

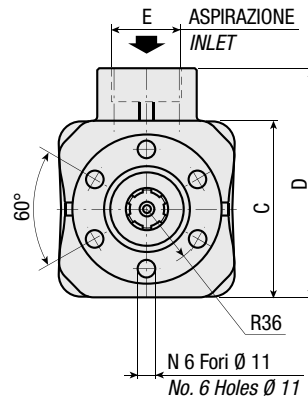
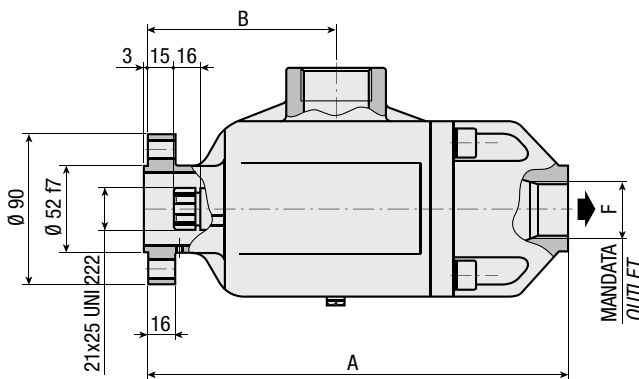
- P1 12-3F
- P1 16-3F
- P1 25-3F
- P1 33-3F

## Pompa a Pistoni Piston Pump



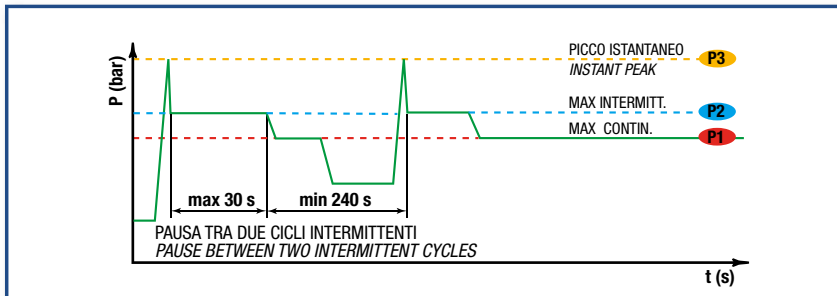
### CARATTERISTICHE E DATI TECNICI - SPECIFICATIONS AND TECHNICAL DATA

TIPO TYPE	CODICE CODE	CILINDRATA DISPLACEMENT cm <sup>3</sup> /rev.	A mm	B mm	C mm	D mm	E ASPIRAZIONE INLET	F MANDATA OUTLET	PESO WEIGHT kg
P1 12-3F	3.1.6.2.012.1.0.00	12	253	113	106	138	1" 1/4 G	1" G	10.0
P1 16-3F	3.1.6.2.016.1.0.00	16							
P1 25-3F	3.1.6.2.025.1.0.00	25							
P1 33-3F	3.1.6.2.033.1.0.00	33							



**DATI TECNICI - TECHNICAL DATA**

**ESEMPIO CICLI LAVORO - EXAMPLE OF WORKING CYCLES**



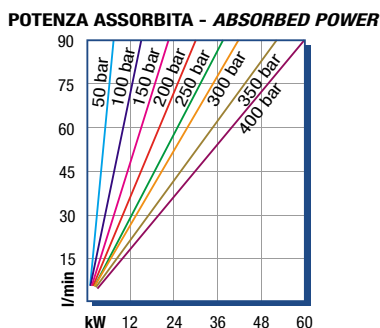
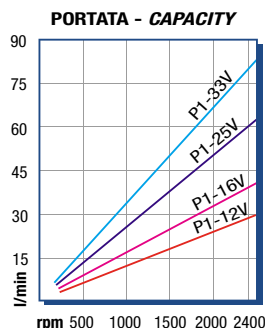
Pressione d'aspirazione: Inlet pressure:	0.7 ÷ 1.5 bar (assoluti/absolute)
Campo viscosità lavoro: Operating viscosity range:	12 ÷ 100 cSt
Temperatura fluido °C (t): Fluid temperature °C (t):	-10° + 80° C

Pressione Lavoro Working Press. P2	Contaminazione - Contamination NAS 1638		Filtro - Filter βx = 75
	NAS 1638	ISO 4406	
≤ 200 bar	12	21/18	40 μm
≥ 200 bar	11	20/17	25 μm

◀ **FILTRAZIONE CONSIGLIATA (ritorno o mandata)**  
**RECOMMENDED FILTERING (return or outlet)**

TIPO - TYPE			P1 12-3F	P1 16-3F	P1 25-3F	P1 33-3F
Cilindrata Displacement	Vg	cm <sup>3</sup> /n cm <sup>3</sup> /rev.	12	16	25	33
Pressione massima continua Max continuous operating pressure	P1	bar	350	350	350	350
Pressione massima intermittente Max intermitt. operating pressure (max 30 s)	P2		400	400	400	400
Pressione massima di picco Max peak pressure (≤ 0.1 s)	P3		450	450	450	450
Velocità massima intermittente Max intermittent speed (P ≤ 20 bar)	n3	n/min r.p.m.	2800	2800	2800	2800
Velocità massima continua Max continuous speed (≤ P1)	n1		2400	2400	2400	2400
Velocità minima intermittente Min intermittent speed (≤ P2 x 0.5) (max 30 s)	n4		400	400	400	400

**DIAGRAMMI - DIAGRAMS**



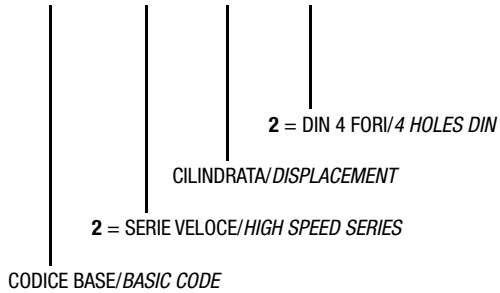
RILIEVI ESEGUITI CON OLIO  
ISO VG 46 A 50° C (ν=30 cSt)  
THE ABOVE SPECIFICATIONS  
REFER TO OIL TYPE ISO  
VG 46 AT 50° C (ν=30 cSt)



# SERIE P1-4D 3.1.6.2.

CODICE DI ORDINAZIONE - DECODING

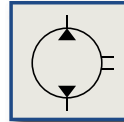
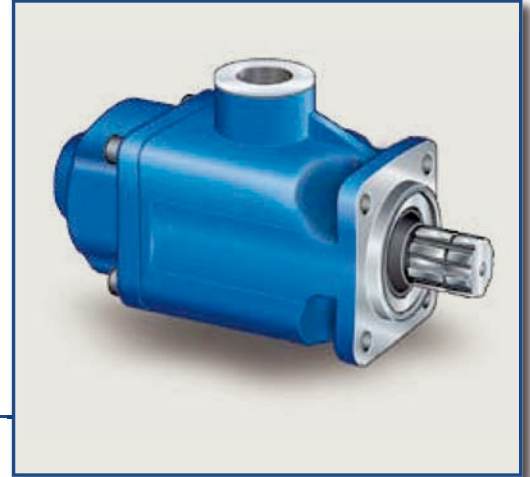
3.1.6 . 2 . XXX . 2 . 0 . 00



DIN  
5 4 6 2  
SE

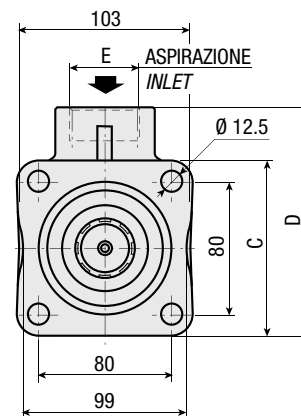
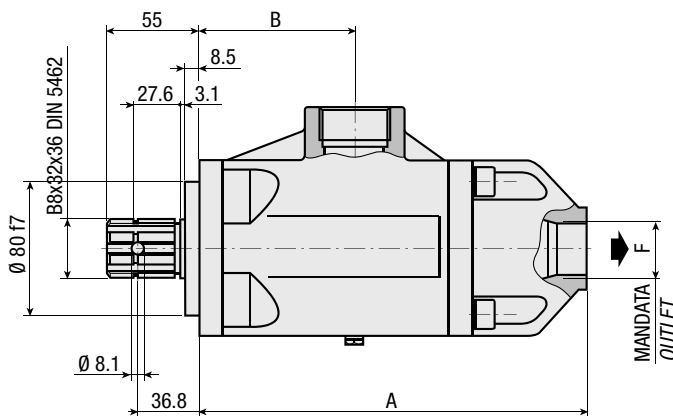
P1 12-4D  
P1 16-4D  
P1 25-4D  
P1 33-4D

Pompa a Pistoni  
Piston Pump



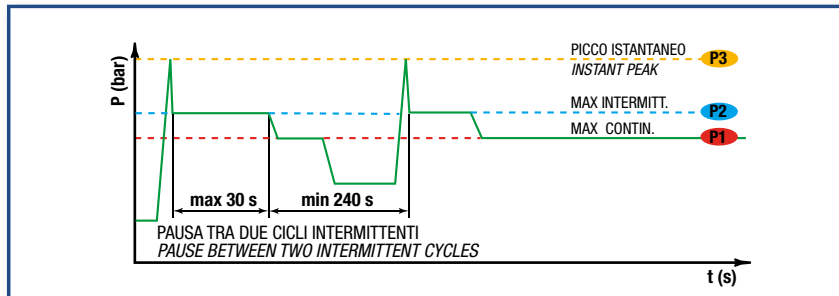
## CARATTERISTICHE E DATI TECNICI - SPECIFICATIONS AND TECHNICAL DATA

TIPO TYPE	CODICE CODE	CILINDRATA DISPLACEMENT cm <sup>3</sup> /rev.	A mm	B mm	C mm	D mm	E ASPIRAZIONE INLET	F MANDATA OUTLET	PESO WEIGHT kg
P1 12-4D	3.1.6.2.012.2.0.00	12	232.5	92.5	106	138	1" 1/4 G	1" G	10.5
P1 16-4D	3.1.6.2.016.2.0.00	16							
P1 25-4D	3.1.6.2.025.2.0.00	25							
P1 33-4D	3.1.6.2.033.2.0.00	33							



**DATI TECNICI - TECHNICAL DATA**

**ESEMPIO CICLI LAVORO - EXAMPLE OF WORKING CYCLES**



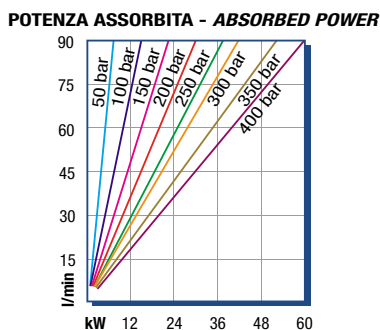
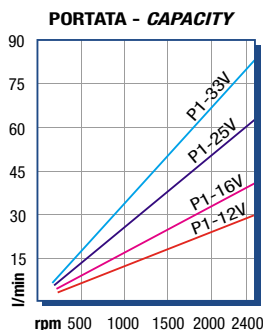
Pressione d'aspirazione: <i>Inlet pressure:</i>	0.7 ÷ 1.5 bar (assoluti/absolute)
Campo viscosità lavoro: <i>Operating viscosity range:</i>	12 ÷ 100 cSt
Temperatura fluido °C (t): <i>Fluid temperature °C (t):</i>	-10° + 80° C

Pressione Lavoro <i>Working Press.</i>	P2	Contaminazione - <i>Contamination</i>		Filtro - <i>Filter</i> βx = 75
		NAS 1638	ISO 4406	
≤ 200 bar		12	21/18	40 μm
≥ 200 bar		11	20/17	25 μm

◀ **FILTRAZIONE CONSIGLIATA (ritorno o mandata)**  
**RECOMMENDED FILTERING (return or outlet)**

TIPO - <i>TYPE</i>			P1 12-4D	P1 16-4D	P1 25-4D	P1 33-4D	
Cilindrata <i>Displacement</i>	Vg	cm <sup>3</sup> /n cm <sup>3</sup> /rev.	12	16	25	33	
Pressione massima continua <i>Max continuous operating pressure</i>	P1	bar	350	350	350	350	
Pressione massima intermittente <i>Max intermitt. operating pressure</i>	(max 30 s)		P2	400	400	400	400
Pressione massima di picco <i>Max peak pressure</i>	(≤ 0.1 s)		P3	450	450	450	450
Velocità massima intermittente <i>Max intermittent speed</i>	(P ≤ 20 bar)	n3	2800	2800	2800	2800	
Velocità massima continua <i>Max continuous speed</i>	(≤ P1)	n1	2400	2400	2400	2400	
Velocità minima intermittente <i>Min intermittent speed</i>	(≤ P2 x 0.5) (max 30 s)	n4	400	400	400	400	

**DIAGRAMMI - DIAGRAMS**



RILIEVI ESEGUITI CON OLIO  
ISO VG 46 A 50° C (ν=30 cSt)  
THE ABOVE SPECIFICATIONS  
REFER TO OIL TYPE ISO  
VG 46 AT 50° C (ν=30 cSt)





# SERIE P1-3F 3.1.6.6.

CODICE DI ORDINAZIONE - DECODING

3.1.6.6 . XXX . 1 . 0 . 00

1 = UNI 3 FORI/3 HOLES UNI

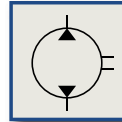
CILINDRATA/DISPLACEMENT

CODICE BASE/BASIC CODE

UNI  
21-222

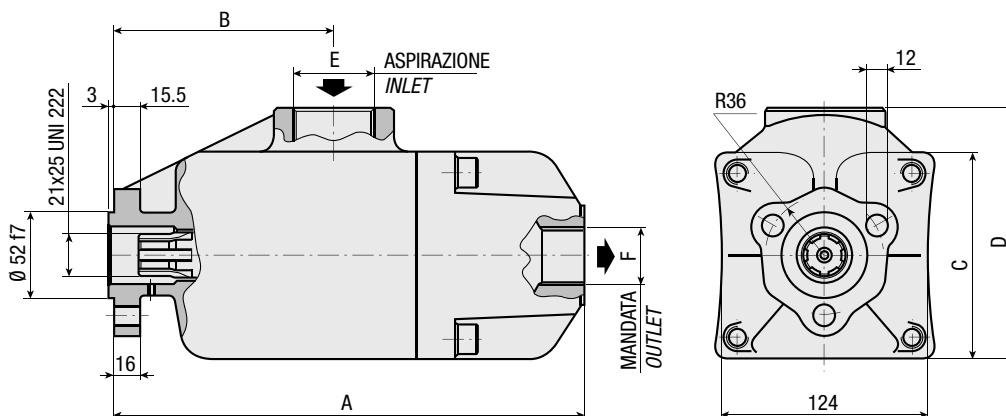
- P1 70-3F
- P1 80-3F
- P1 90-3F
- P1 100-3F

**Pompa a Pistoni**  
**Piston Pump**



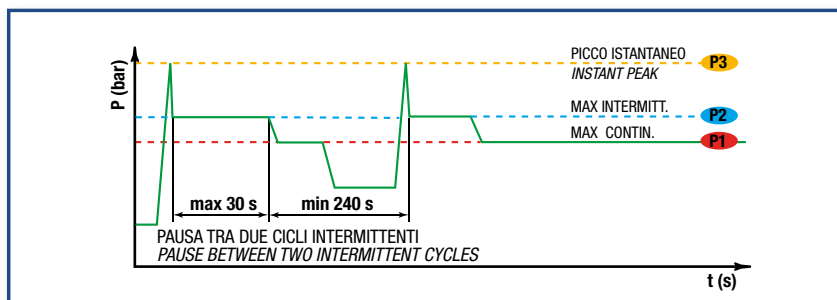
## CARATTERISTICHE E DATI TECNICI - SPECIFICATIONS AND TECHNICAL DATA

TIPO TYPE	CODICE CODE	CILINDRATA DISPLACEMENT cm <sup>3</sup> /rev.	A mm	B mm	C mm	D mm	E ASPIRAZIONE INLET	F MANDATA OUTLET	PESO WEIGHT kg
P1 70-3F	3.1.6.6.070.1.0.00	70	282	132.5	124	150.5	1" 1/2 G	1" G	17.0
P1 80-3F	3.1.6.6.080.1.0.00	80							
P1 90-3F	3.1.6.6.090.1.0.00	90							
P1 100-3F	3.1.6.6.100.1.0.00	100							



### DATI TECNICI - TECHNICAL DATA

#### ESEMPIO CICLI LAVORO - EXAMPLE OF WORKING CYCLES



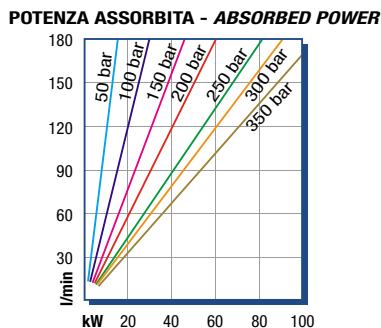
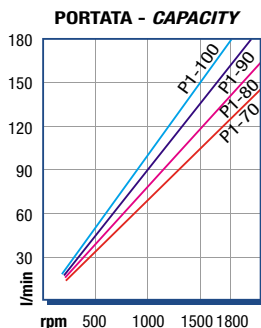
Pressione d'aspirazione: <i>Inlet pressure:</i>	0.7 ÷ 1.5 bar (assoluti/absolute)
Campo viscosità lavoro: <i>Operating viscosity range:</i>	12 ÷ 100 cSt
Temperatura fluido °C (t): <i>Fluid temperature °C (t):</i>	-10° + 80° C

Pressione Lavoro <i>Working Press.</i>	P2	Contaminazione - Contamination		Filtro - Filter βx = 75
		NAS 1638	ISO 4406	
≤ 200 bar		12	21/18	40 μm
≥ 200 bar		11	20/17	25 μm

◀ **FILTRAZIONE CONSIGLIATA (ritorno o mandata)**  
**RECOMMENDED FILTERING (return or outlet)**

TIPO - TYPE			P1 70-3F	P1 80-3F	P1 90-3F	P1 100-3F	
Cilindrata <i>Displacement</i>	Vg	cm <sup>3</sup> /n cm <sup>3</sup> /rev.	70	80	90	100	
Pressione massima continua <i>Max continuous operating pressure</i>	P1	bar	300	300	300	300	
Pressione massima intermittente <i>Max intermitt. operating pressure</i>	(max 30 s)		P2	350	350	350	350
Pressione massima di picco <i>Max peak pressure</i>	(≤ 0.1 s)		P3	400	400	400	400
Velocità massima intermittente <i>Max intermittent speed</i>	(P ≤ 20 bar)	n3	2000	2000	2000	2000	
Velocità massima continua <i>Max continuous speed</i>	(≤ P1)	n1	1600	1600	1600	1600	
Velocità minima intermittente <i>Min intermittent speed</i>	(≤ P2 x 0.5) (max 30 s)	n4	400	400	400	400	

### DIAGRAMMI - DIAGRAMS



RILIEVI ESEGUITI CON OLIO  
ISO VG 46 A 50° C (ν=30 cSt)  
THE ABOVE SPECIFICATIONS  
REFER TO OIL TYPE ISO  
VG 46 AT 50° C (ν=30 cSt)



# SERIE P1-4D 3.1.6.6.

CODICE DI ORDINAZIONE - DECODING

3.1.6.6 . XXX . 2 . 0 . 00

2 = DIN 4 FORI/4 HOLES DIN

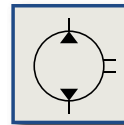
CILINDRATA/DISPLACEMENT

CODICE BASE/BASIC CODE

DIN  
5 4 6 2  
SE

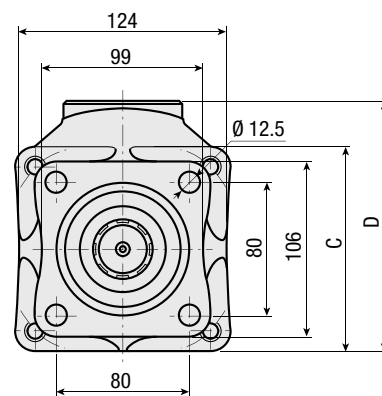
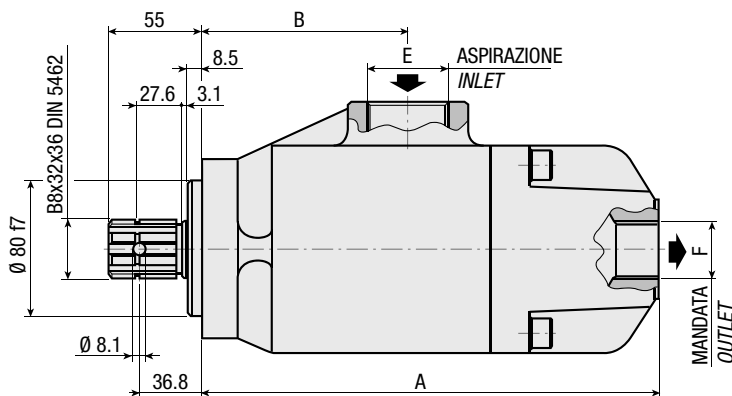
P1 70-4D  
P1 80-4D  
P1 90-4D  
P1 100-4D

Pompa a Pistoni  
Piston Pump



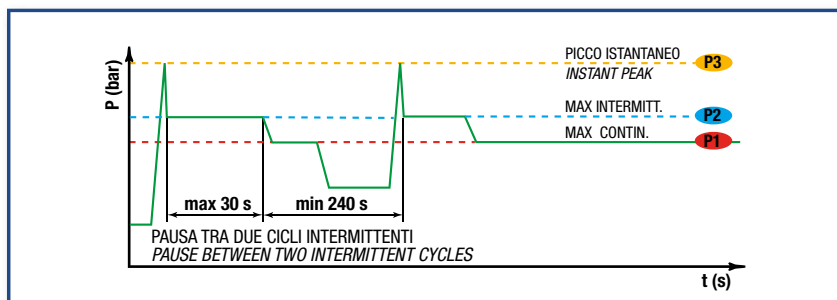
## CARATTERISTICHE E DATI TECNICI - SPECIFICATIONS AND TECHNICAL DATA

TIPO TYPE	CODICE CODE	CILINDRATA DISPLACEMENT cm <sup>3</sup> /rev.	A mm	B mm	C mm	D mm	E ASPIRAZIONE INLET	F MANDATA OUTLET	PESO WEIGHT kg
P1 70-4D	3.1.6.6.070.2.0.00	70	272	122.5	124	150.5	1" 1/2 G	1" G	17.5
P1 80-4D	3.1.6.6.080.2.0.00	80							
P1 90-4D	3.1.6.6.090.2.0.00	90							
P1 100-4D	3.1.6.6.100.2.0.00	100							



### DATI TECNICI - TECHNICAL DATA

#### ESEMPIO CICLI LAVORO - EXAMPLE OF WORKING CYCLES



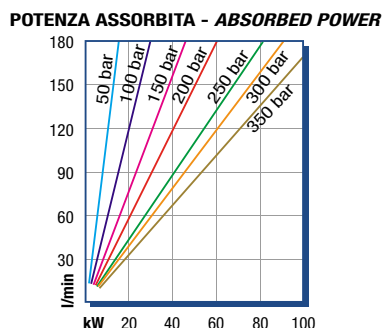
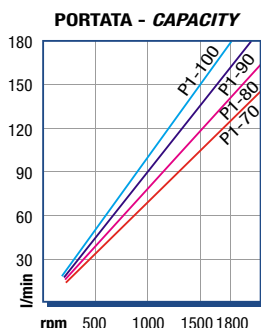
Pressione d'aspirazione: <i>Inlet pressure:</i>	0.7 ÷ 1.5 bar (assoluti/absolute)
Campo viscosità lavoro: <i>Operating viscosity range:</i>	12 ÷ 100 cSt
Temperatura fluido °C (t): <i>Fluid temperature °C (t):</i>	-10° + 80° C

Pressione Lavoro <i>Working Press.</i>	P2	Contaminazione - Contamination		Filtro - Filter βx = 75
		NAS 1638	ISO 4406	
≤ 200 bar		12	21/18	40 μm
≥ 200 bar		11	20/17	25 μm

◀ **FILTRAZIONE CONSIGLIATA (ritorno o mandata)**  
**RECOMMENDED FILTERING (return or outlet)**

TIPO - TYPE			P1 70-4D	P1 80-4D	P1 90-4D	P1 100-4D	
Cilindrata <i>Displacement</i>	Vg	cm <sup>3</sup> /n cm <sup>3</sup> /rev.	70	80	90	100	
Pressione massima continua <i>Max continuous operating pressure</i>	P1	bar	300	300	300	300	
Pressione massima intermittente <i>Max intermitt. operating pressure</i>	(max 30 s)		P2	350	350	350	350
Pressione massima di picco <i>Max peak pressure</i>	(≤ 0.1 s)		P3	400	400	400	400
Velocità massima intermittente <i>Max intermittent speed</i>	(P ≤ 20 bar)	n3	2000	2000	2000	2000	
Velocità massima continua <i>Max continuous speed</i>	(≤ P1)	n1	1600	1600	1600	1600	
Velocità minima intermittente <i>Min intermittent speed</i>	(≤ P2 x 0.5) (max 30 s)	n4	400	400	400	400	

### DIAGRAMMI - DIAGRAMS



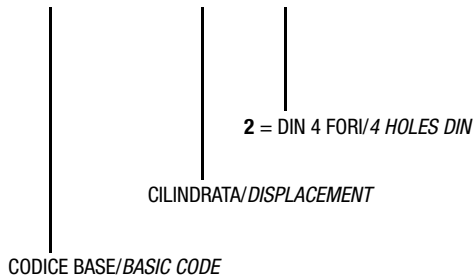
RILIEVI ESEGUITI CON OLIO  
ISO VG 46 A 50° C (ν=30 cSt)  
THE ABOVE SPECIFICATIONS  
REFER TO OIL TYPE ISO  
VG 46 AT 50° C (ν=30 cSt)



# SERIE P1-4D 3.1.6.6.

CODICE DI ORDINAZIONE - DECODING

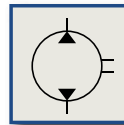
3.1.6.6 . XXX . 2 . 0 . 00



**DIN**  
5 4 6 2  
**SE**

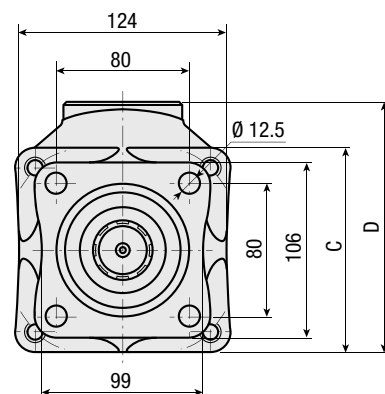
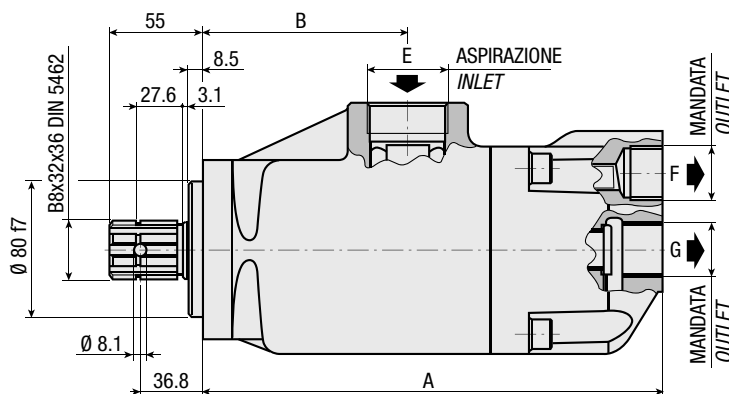
P1 41+41-4D  
P1 51+41-4D  
P1 51+51-4D

## Pompa a Pistoni Doppia Portata Dual Flow Piston Pump



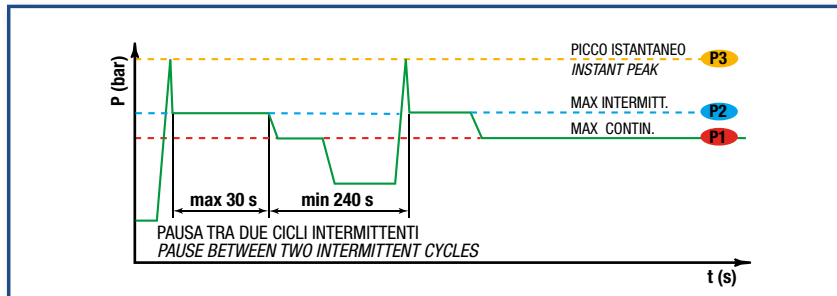
### CARATTERISTICHE E DATI TECNICI - SPECIFICATIONS AND TECHNICAL DATA

TIPO TYPE	CODICE CODE	CILINDRATA DISPLACEMENT cm <sup>3</sup> /rev. G+F	A mm	B mm	C mm	D mm	E ASPIRAZIONE INLET	F MANDATA OUTLET	G MANDATA OUTLET	PESO WEIGHT kg
P1 41+41-4D	3.1.6.6.082.2.0.00	41+41	276	122.5	124	150.5	1" 1/2 G	1" G	1" G	17.7
P1 51+41-4D	3.1.6.6.092.2.0.00	51+41								17.7
P1 51+51-4D	3.1.6.6.102.2.0.00	51+51								17.7



### DATI TECNICI - TECHNICAL DATA

#### ESEMPIO CICLI LAVORO - EXAMPLE OF WORKING CYCLES



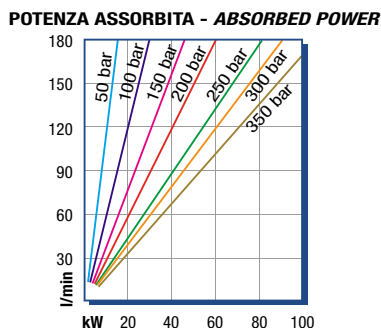
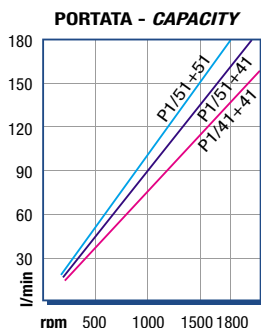
Pressione d'aspirazione: <i>Inlet pressure:</i>	0.7 ÷ 1.5 bar (assoluti/absolute)
Campo viscosità lavoro: <i>Operating viscosity range:</i>	12 ÷ 100 cSt
Temperatura fluido °C (t): <i>Fluid temperature °C (t):</i>	-10° + 80° C

Pressione Lavoro <i>Working Press.</i>	P2	Contaminazione - Contamination		Filtro - Filter $\beta_x = 75$
		NAS 1638	ISO 4406	
≤ 200 bar		12	21/18	40 μm
≥ 200 bar		11	20/17	25 μm

◀ FILTRAZIONE CONSIGLIATA (ritorno o mandata)  
*RECOMMENDED FILTERING (return or outlet)*

TIPO - TYPE			P1 41+41-4D	P1 51+41-4D	P1 51+51-4D
Cilindrata <i>Displacement</i>	Vg	cm <sup>3</sup> /n cm <sup>3</sup> /rev.	41+41	51+41	51+51
Pressione massima continua <i>Max continuous operating pressure</i>	P1	bar	300	300	300
Pressione massima intermittente <i>Max intermitt. operating pressure</i>	(max 30 s) P2		350	350	350
Pressione massima di picco <i>Max peak pressure</i>	(≤ 0.1 s) P3		400	400	400
Velocità massima intermittente <i>Max intermittent speed</i>	(P ≤ 20 bar) n3	n/min r.p.m.	2000	2000	2000
Velocità massima continua <i>Max continuous speed</i>	(≤ P1) n1		1600	1600	1600
Velocità minima intermittente <i>Min intermittent speed</i>	(≤ P2 x 0.5) (max 30 s) n4		400	400	400

### DIAGRAMMI - DIAGRAMS



RILIEVI ESEGUITI CON OLIO  
ISO VG 46 A 50° C ( $\sqrt{v}=30$  cSt)  
THE ABOVE SPECIFICATIONS  
REFER TO OIL TYPE ISO  
VG 46 AT 50° C ( $\sqrt{v}=30$  cSt)