



SERIE ISO

3.1.2.6.

Pompa ad Ingranaggi Gear Pump

CODICE DI ORDINAZIONE - DECODING

3.1.2.6 . XXX . X . 0 . X . 0

DIN
5 4 6 2
SE

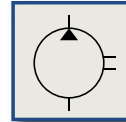
ISO 62
ISO 73
ISO 84
ISO 100
ISO 116
ISO 132
ISO 148

ALLESTIMENTI SPECIALI/SPECIAL OPTIONS
0 = NON RICHiesto/STANDARD OPTION
2 = ALBERO SUPPORTATO/BEARING GEAR
4 = ALBERO SUPPORTATO - MANDATA IN TESTA
BEARING GEAR - REAR OUTLET
7 = MANDATA IN TESTA/REAR OUTLET

ROTAZIONE/ROTATION
1 = SINISTRO/ANTICLOCKWISE
2 = DESTRO/CLOCKWISE

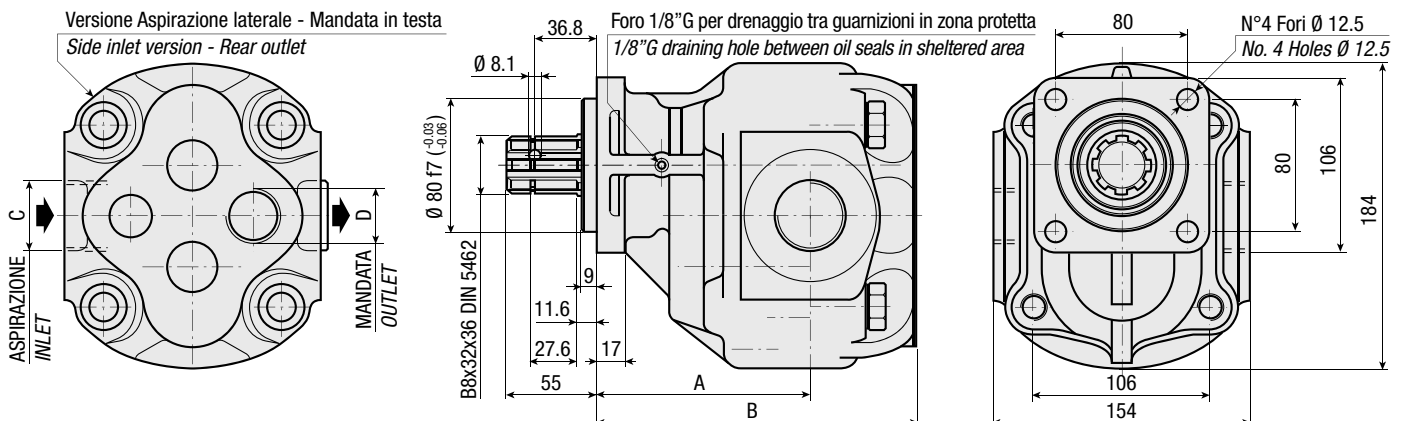
CILINDRATA/DISPLACEMENT

CODICE BASE/BASIC CODE



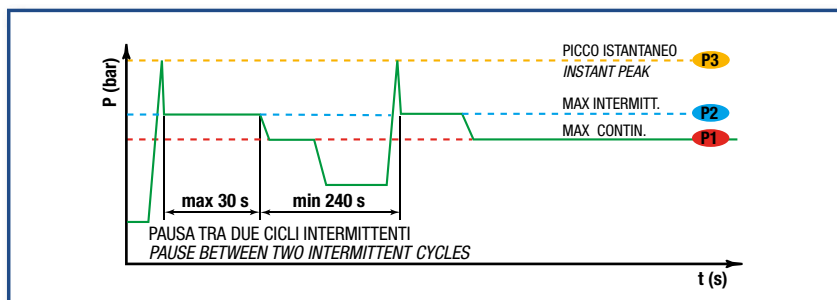
CARATTERISTICHE E DATI TECNICI - SPECIFICATIONS AND TECHNICAL DATA

TIPO TYPE	CODICE CODE	CILINDRATA DISPLACEMENT cm ³ /rev.	A mm	B mm	C ASPIRAZIONE INLET	D MANDATA OUTLET	PESO WEIGHT kg
ISO 62	3.1.2.6.062.X.0.X.0	62	122	186	1" G	3/4" G	20.4
ISO 73	3.1.2.6.073.X.0.X.0	73	126	190	1" G	3/4" G	21.1
ISO 84	3.1.2.6.084.X.0.X.0	84	130	194	1" 1/4 G	1" G	21.8
ISO 100	3.1.2.6.100.X.0.X.0	100	130	200	1" 1/4 G	1" G	22.8
ISO 116	3.1.2.6.116.X.0.X.0	116	133	206	1" 1/4 G	1" G	23.8
ISO 132	3.1.2.6.132.X.0.X.0	132	137.5	212	1" 1/2 G	1" G	24.9
ISO 148	3.1.2.6.148.X.0.X.0	148	143.5	218	1" 1/2 G	1" G	26



DATI TECNICI - TECHNICAL DATA

ESEMPIO CICLI LAVORO - EXAMPLE OF WORKING CYCLES



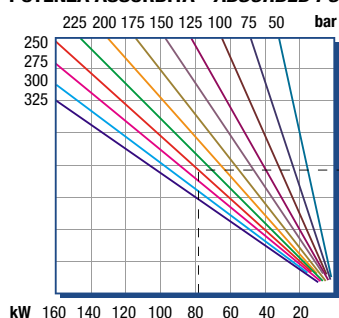
Pressione d'aspirazione: <i>Inlet pressure:</i>	0.7 ÷ 1.5 bar (assoluti/absolute)
Campo viscosità lavoro: <i>Operating viscosity range:</i>	12 ÷ 100 cSt
Temperatura fluido °C (t): <i>Fluid temperature °C (t):</i>	-10° + 80° C

Pressione Lavoro <i>Working Press.</i>	P2	Contaminazione - Contamination		Filtro - Filter $\beta_x = 75$
		NAS 1638	ISO 4406	
≤ 200 bar		12	21/18	40 μm
≥ 200 bar		11	20/17	25 μm

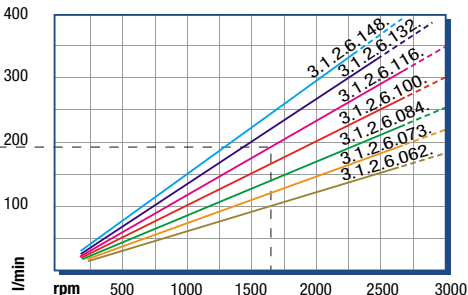
◀ **FILTRAZIONE CONSIGLIATA (ritorno o mandata)**
RECOMMENDED FILTERING (return or outlet)

TIPO - TYPE			ISO 62	ISO 73	ISO 84	ISO 100	ISO 116	ISO 132	ISO 148	
Cilindrata <i>Displacement</i>	Vg	cm ³ /n cm ³ /rev.	62	73	84	100	116	132	148	
Pressione massima continua <i>Max continuous operating pressure</i>	P1	bar	300	290	270	260	250	230	190	
Pressione massima intermittente <i>Max intermitt. operating pressure</i>	(max 30 s)		P2	350	320	310	290	280	270	230
Pressione massima di picco <i>Max peak pressure</i>	(≤ 0.1 s)		P3	450	450	375	375	340	315	270
Velocità massima intermittente <i>Max intermittent speed</i>	(P ≤ 20 bar)	n3	3800	3800	3500	3500	3000	3000	3000	
Velocità massima continua <i>Max continuous speed</i>	(≤ P1)	n1	2000	1800	1800	1500	1500	1500	1500	
Velocità minima intermittente <i>Min intermittent speed</i>	(≤ P2 x 0.5) (max 30 s)	n4	400	300	300	250	250	250	250	

POTENZA ASSORBITA - ABSORBED POWER



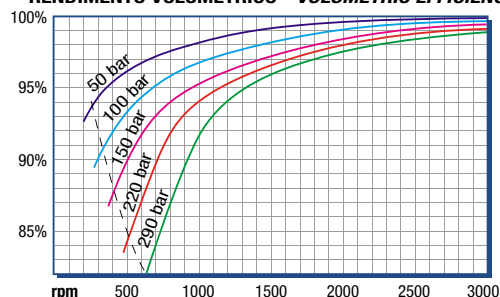
PORTATA - CAPACITY



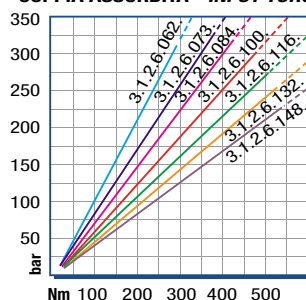
RILIEVI ESEGUITI CON OLIO
ISO VG 46 A 50° C ($\nu=30$ cSt)
THE ABOVE SPECIFICATIONS
REFER TO OIL TYPE ISO
VG 46 AT 50° C ($\nu=30$ cSt)

DIAGRAMMI - DIAGRAMS

RENDIMENTO VOLUMETRICO - VOLUMETRIC EFFICIENCY



COPPIA ASSORBITA - INPUT TORQUE





SERIE ISO-EV 3.1.2.6.

CODICE DI ORDINAZIONE - DECODING

3.1.2.6 . XXX . X . XX . 0

DIN
5 4 6 2
SE

ISO-EV 73
ISO-EV 84
ISO-EV 100
ISO-EV 116

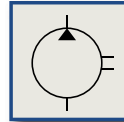
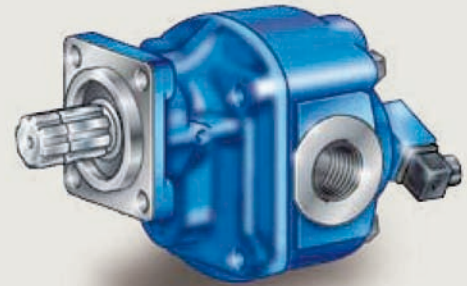
ALLESTIMENTI SPECIALI/SPECIAL OPTIONS
09 = CON ELETTROVALVOLA DI BY-PASS 24 V
 WITH BY-PASS ELECTRIC VALVE 24 V
10 = CON ELETTROVALVOLA DI BY-PASS 12 V
 WITH BY-PASS ELECTRIC VALVE 12 V

ROTAZIONE/ROTATION
1 = SINISTRO/ANTICLOCKWISE
2 = DESTRO/CLOCKWISE

CILINDRATA/DISPLACEMENT

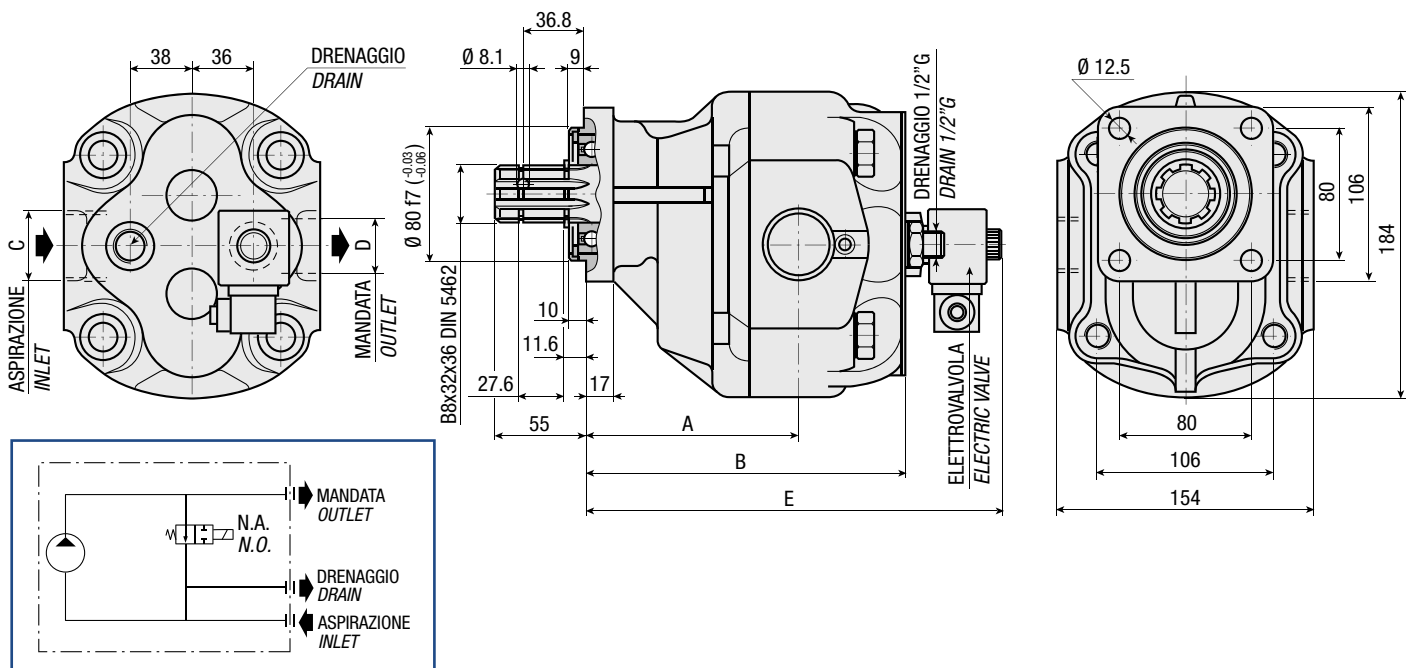
CODICE BASE/BASIC CODE

**Pompa ad Ingranaggi
 con Electrovalvola di By-pass
 Gear Pump
 with By-pass Electric Valve**



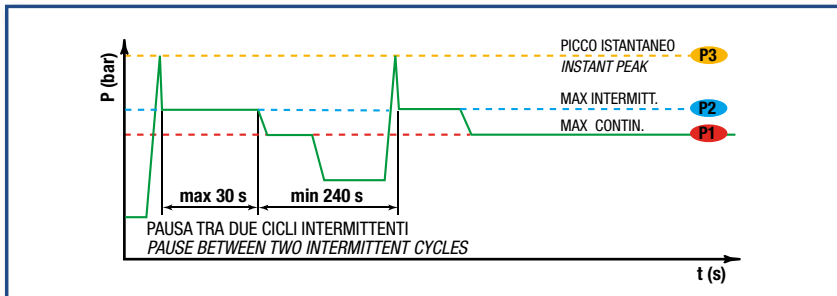
CARATTERISTICHE E DATI TECNICI - SPECIFICATIONS AND TECHNICAL DATA

TIPO TYPE	CODICE CODE	CILINDRATA DISPLACEMENT cm ³ /rev.	A mm	B mm	C ASPIRAZIONE INLET	D MANDATA OUTLET	E mm	PESO WEIGHT kg
ISO-EV 73	3.1.2.6.073.X.XX.0	73	126	190	1" G	3/4" G	250	21.6
ISO-EV 84	3.1.2.6.084.X.XX.0	84	130	194	1" 1/4 G	1" G	254	22.3
ISO-EV 100	3.1.2.6.100.X.XX.0	100	130	200	1" 1/4 G	1" G	260	23.3
ISO-EV 116	3.1.2.6.116.X.XX.0	116	206	206	1" 1/4 G	1" G	266	24.3



DATI TECNICI - TECHNICAL DATA

ESEMPIO CICLI LAVORO - EXAMPLE OF WORKING CYCLES



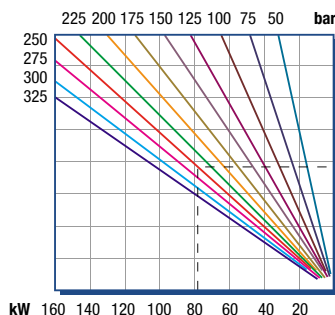
Pressione d'aspirazione: <i>Inlet pressure:</i>	0.7 ÷ 1.5 bar (assoluti/absolute)
Campo viscosità lavoro: <i>Operating viscosity range:</i>	12 ÷ 100 cSt
Temperatura fluido °C (t): <i>Fluid temperature °C (t):</i>	-10° + 80° C

Pressione Lavoro <i>Working Press.</i>	P2	Contaminazione - Contamination		Filtro - Filter $\beta_x = 75$
		NAS 1638	ISO 4406	
≤ 200 bar		12	21/18	40 μm
≥ 200 bar		11	20/17	25 μm

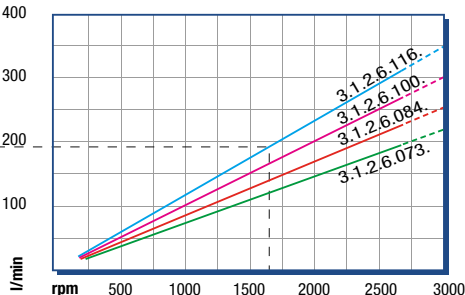
◀ **FILTRAZIONE CONSIGLIATA (ritorno o mandata)**
RECOMMENDED FILTERING (return or outlet)

TIPO - TYPE			ISO-EV 73	ISO-EV 84	ISO-EV 100	ISO-EV 116	
Cilindrata <i>Displacement</i>	Vg	cm ³ /n cm ³ /rev.	73	84	100	116	
Pressione massima continua <i>Max continuous operating pressure</i>	P1	bar	290	270	260	250	
Pressione massima intermittente <i>Max intermitt. operating pressure</i>	(max 30 s)		P2	320	310	290	280
Pressione massima di picco <i>Max peak pressure</i>	(≤ 0.1 s)		P3	450	450	375	340
Velocità massima intermittente <i>Max intermittent speed</i>	(P ≤ 20 bar)	n3	3800	3500	3500	3000	
Velocità massima continua <i>Max continuous speed</i>	(≤ P1)	n1	1800	1800	1500	1500	
Velocità minima intermittente <i>Min intermittent speed</i>	(≤ P2 x 0.5) (max 30 s)	n4	300	300	250	250	

POTENZA ASSORBITA - ABSORBED POWER



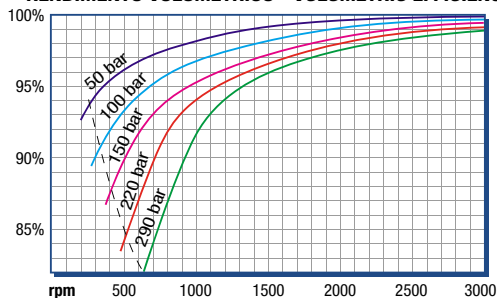
PORTATA - CAPACITY



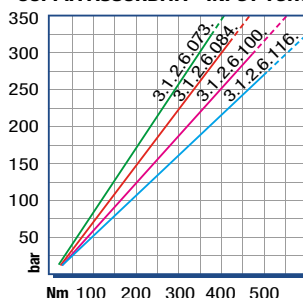
RILIEVI ESEGUITI CON OLIO
ISO VG 46 A 50° C ($\nu=30$ cSt)
THE ABOVE SPECIFICATIONS
REFER TO OIL TYPE ISO
VG 46 AT 50° C ($\nu=30$ cSt)

DIAGRAMMI - DIAGRAMS

RENDIMENTO VOLUMETRICO - VOLUMETRIC EFFICIENCY



COPPIA ASSORBITA - INPUT TORQUE





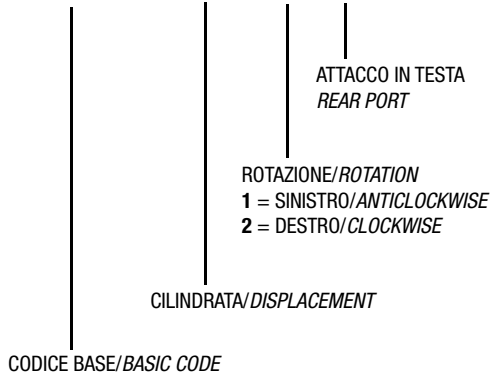
SERIE XLS

3.1.2.9.

Pompa ad Ingranaggi Gear Pump

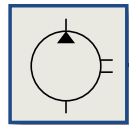
CODICE DI ORDINAZIONE - *DECODING*

3.1.2.9 . XXX . X . 5 . 00



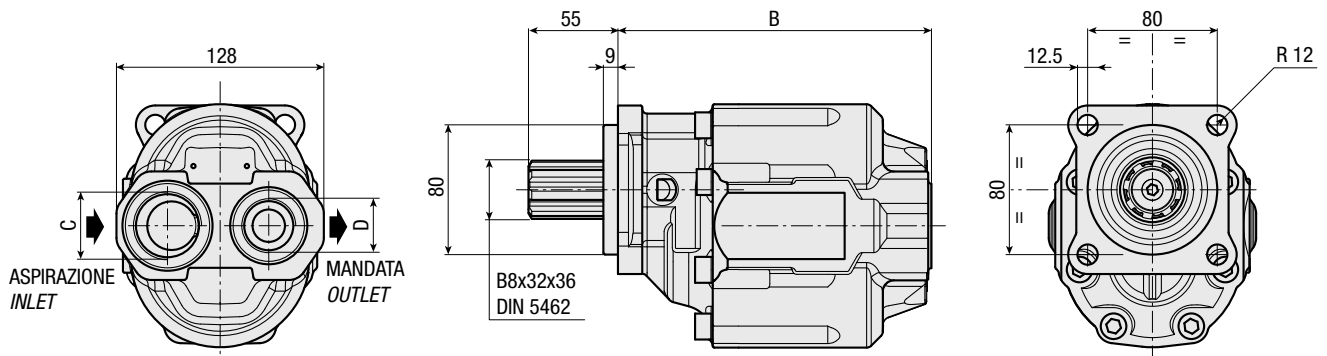
DIN
5 4 6 2
SE

XLS 57
XLS 65
XLS 90



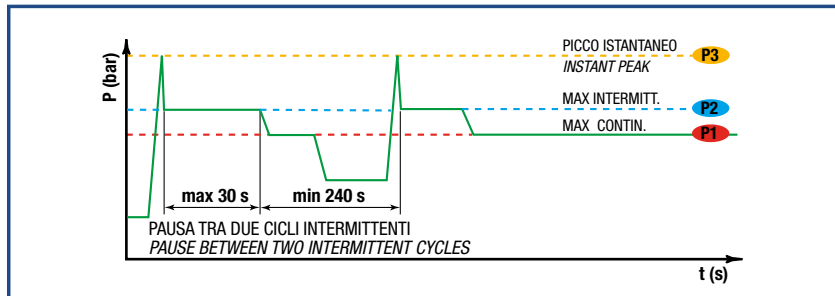
CARATTERISTICHE E DATI TECNICI - *SPECIFICATIONS AND TECHNICAL DATA*

TIPO TYPE	CODICE CODE	CILINDRATA DISPLACEMENT cm ³ /rev.	B mm	C ASPIRAZIONE INLET	D MANDATA OUTLET	PESO WEIGHT kg
XLS 57	3.1.2.9.057.X.5.00	57	173.5	1" G	3/4" G	12.2
XLS 65	3.1.2.9.065.X.5.00	65	178.5	1" G	3/4" G	12.6
XLS 90	3.1.2.9.090.X.5.00	84	193.5	1" 1/4 G	1" G	13.9



DATI TECNICI - TECHNICAL DATA

ESEMPIO CICLI LAVORO - EXAMPLE OF WORKING CYCLES



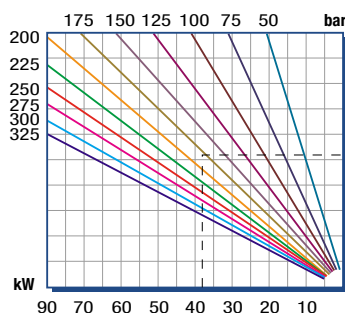
Pressione d'aspirazione: <i>Inlet pressure:</i>	0.7 ÷ 1.5 bar (assoluti/absolute)
Campo viscosità lavoro: <i>Operating viscosity range:</i>	12 ÷ 100 cSt
Temperatura fluido °C (t): <i>Fluid temperature °C (t):</i>	-10° + 80° C

Pressione Lavoro <i>Working Press.</i>	P2	Contaminazione - <i>Contamination</i>		Filtro - <i>Filter</i> βx = 75
		NAS 1638	ISO 4406	
≤ 200 bar		12	21/18	40 μm
≥ 200 bar		11	20/17	25 μm

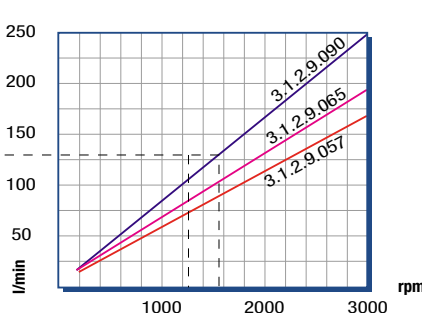
◀ **FILTRAZIONE CONSIGLIATA (ritorno o mandata)**
RECOMMENDED FILTERING (return or outlet)

TIPO - TYPE			XLS 57	XLS 65	XLS 90	
Cilindrata <i>Displacement</i>	Vg	cm ³ /n cm ³ /rev.	57	65	84	
Pressione massima continua <i>Max continuous operating pressure</i>	P1	bar	260	240	220	
Pressione massima intermittente <i>Max intermitt. operating pressure</i>	(max 30 s)		P2	285	265	240
Pressione massima di picco <i>Max peak pressure</i>	(≤ 0.1 s)		P3	380	330	300
Velocità massima intermittente <i>Max intermittent speed</i>	(P ≤ 20 bar)	n3	3000	3000	3000	
Velocità massima continua <i>Max continuous speed</i>	(≤ P1)	n1	2500	2500	2500	
Velocità minima intermittente <i>Min intermittent speed</i>	(≤ P2 x 0.5) (max 30 s)	n4	450	400	400	

POTENZA ASSORBITA - POWER INPUT



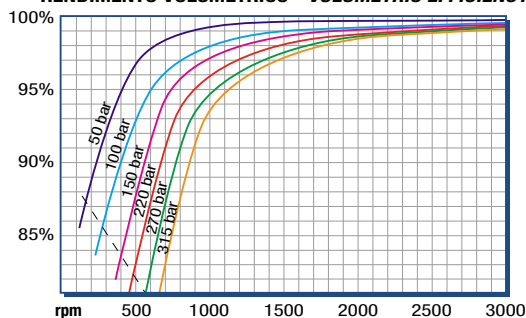
PORTATA - CAPACITY



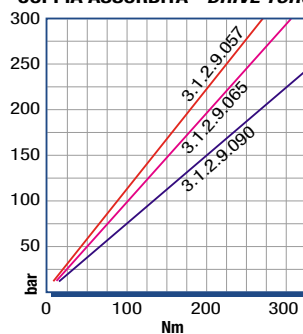
RILIEVI ESEGUITI CON OLIO
ISO VG 46 A 50° C (ν=30 cSt)
THE ABOVE SPECIFICATIONS
REFER TO OIL TYPE ISO
VG 46 AT 50° C (ν=30 cSt)

DIAGRAMMI - DIAGRAMS

RENDIMENTO VOLUMETRICO - VOLUMETRIC EFFICIENCY



COPPIA ASSORBITA - DRIVE TORQUE





SERIE XBG

CODICE DI ORDINAZIONE - DECODING

3.1.55 . XXX . 0 . P . 0 . 0

CILINDRATA/DISPLACEMENT

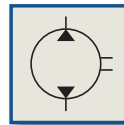
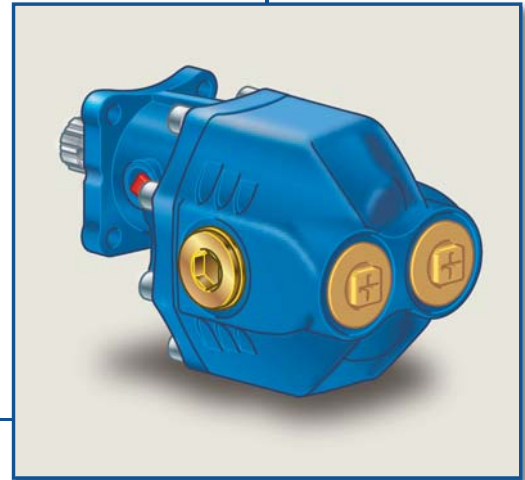
CODICE BASE/BASIC CODE

3.1.55.

DIN
5 4 6 2
SE

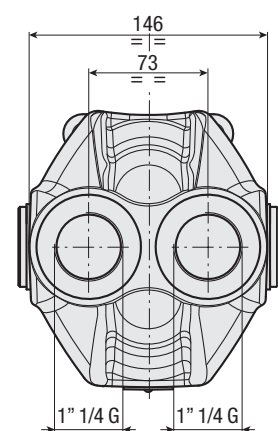
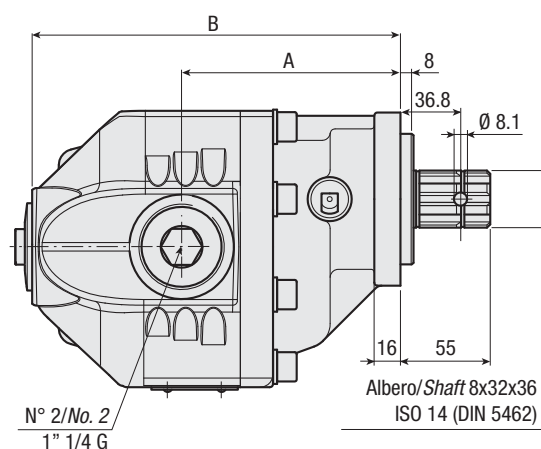
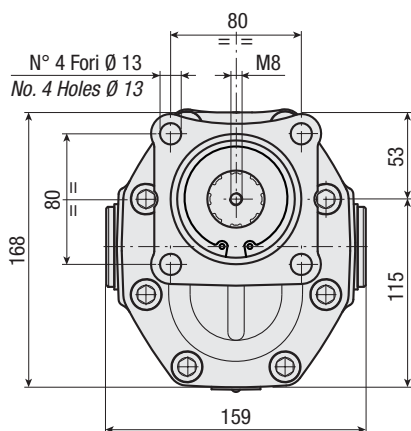
XBG 90
XBG 100
XBG 110
XBG 122

Pompa ad Ingranaggi Gear Pump



CARATTERISTICHE E DATI TECNICI - SPECIFICATIONS AND TECHNICAL DATA

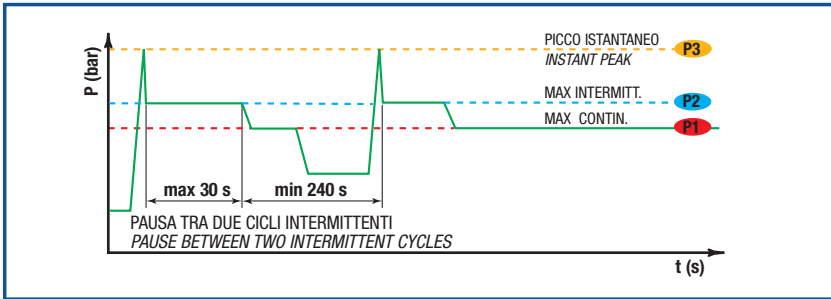
TIPO TYPE	CODICE CODE	CILINDRATA DISPLACEMENT cm ³ /rev.	A mm	B mm	C ASPIRAZIONE/MANDATA INLET/OUTLET	PESO WEIGHT kg
XBG 90	3.1.55.090.0.P.0.0	88.8	134	226	1" 1/4 G	20.5
XBG 100	3.1.55.100.0.P.0.0	98.5	138	230	1" 1/4 G	21.5
XBG 110	3.1.55.110.0.P.0.0	108.3	136	234	1" 1/4 G	22
XBG 122	3.1.55.122.0.P.0.0	119.2	141	239	1" 1/4 G	22.9



KIT RASAMENTO (richiedere 2 pezzi)/THRUST PLATE KIT (order 2 units for each pump) COD. 2.06.009.00000
 KIT GUARNIZIONI COMPLETO (richiedere 1 pezzo)/COMPLETE SEALS KIT (order 1 unit for each pump) COD. 2.19.037.00000

DATI TECNICI - TECHNICAL DATA

ESEMPIO CICLI LAVORO - EXAMPLE OF WORKING CYCLES



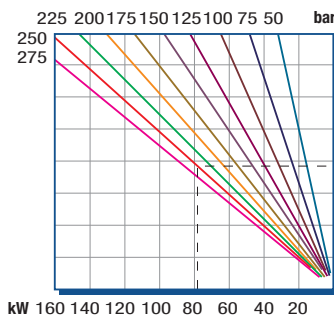
Pressione d'aspirazione: <i>Inlet pressure:</i>	0.7 ÷ 1.5 bar (assoluti/absolute)
Campo viscosità lavoro: <i>Operating viscosity range:</i>	12 ÷ 100 cSt
Temperatura fluido °C (t): <i>Fluid temperature °C (t):</i>	-10° + 80° C

Pressione Lavoro <i>Working Press.</i>	P2	Contaminazione - <i>Contamination</i>		Filtro - <i>Filter</i> βx = 75
		NAS 1638	ISO 4406	
≤ 200 bar		12	21/18	40 μm
≥ 200 bar		11	20/17	25 μm

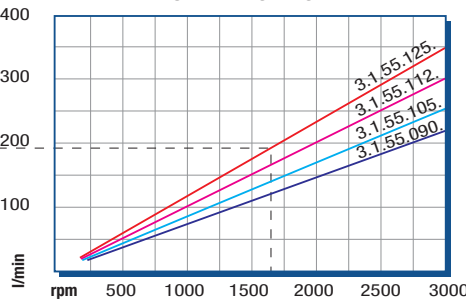
◀ **FILTRAZIONE CONSIGLIATA (ritorno o mandata)**
RECOMMENDED FILTERING (return or outlet)

TIPO - TYPE			XBG 90	XBG 100	XBG 110	XBG 122	
Cilindrata <i>Displacement</i>	Vg	cm ³ /n cm ³ /rev.	88.8	98.5	108.3	119.2	
Pressione massima continua <i>Max continuous operating pressure</i>	P1	bar	250	225	210	210	
Pressione massima intermittente <i>Max intermitt. operat. press.</i>	(max 30 s)		P2	275	250	230	230
Pressione massima di picco <i>Max peak pressure</i>	(≤ 0.1 s)		P3	290	265	245	245
Velocità massima intermittente <i>Max intermittent speed</i>	(P ≤ 20 bar)	n3	2200	2200	2200	2000	
Velocità massima continua <i>Max continuous speed</i>	(≤ P1)	n1	1800	1800	1800	1500	
Velocità minima intermittente <i>Min intermittent speed</i>	(≤ P2 x 0.5) (max 30 s)	n4	300	300	300	300	

POTENZA ASSORBITA - ABSORBED POWER

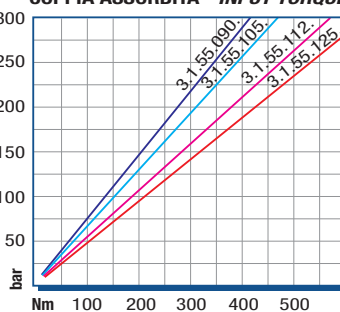


PORTATA - CAPACITY



DIAGRAMMI - DIAGRAMS

COPPIA ASSORBITA - INPUT TORQUE



RILIEVI ESEGUITI CON OLIO
ISO VG 46 A 50° C (ν=30 cSt)
THE ABOVE SPECIFICATIONS
REFER TO OIL TYPE ISO
VG 46 AT 50° C (ν=30 cSt)



SERIE XP-4D 3.1.7.1.

CODICE DI ORDINAZIONE - DECODING

3.1.7.1 . XXX . X . 0 . X . 0

DIN
5 4 6 2
SE

- XP-4D 15
- XP-4D 22
- XP-4D 36
- XP-4D 43
- XP-4D 57
- XP-4D 65
- XP-4D 83
- XP-4D 102

ALLESTIMENTI SPECIALI/SPECIAL OPTIONS

0 = NON RICHIESTO/STANDARD OPTION

7 = ASPIRAZIONE LATERALE - MANDATA IN TESTA
SIDE INLET - REAR OUTLET

ROTAZIONE/ROTATION

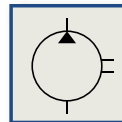
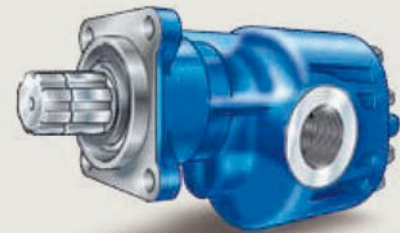
1 = SINISTRO/ANTICLOCKWISE

2 = DESTRO/CLOCKWISE

CILINDRATA/DISPLACEMENT

CODICE BASE/BASIC CODE

Pompa ad Ingranaggi Gear Pump

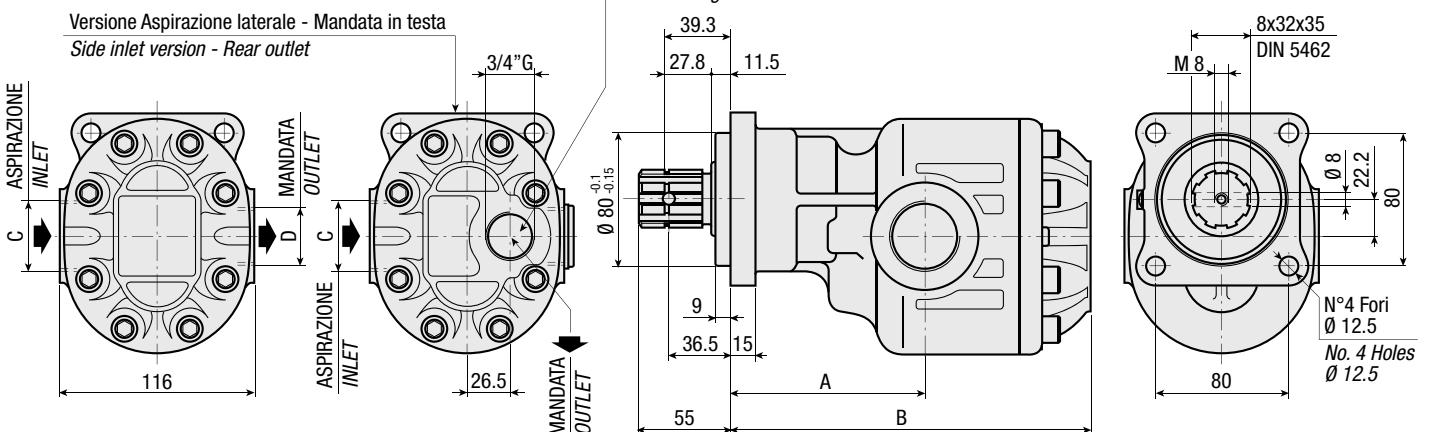


CARATTERISTICHE E DATI TECNICI - SPECIFICATIONS AND TECHNICAL DATA

TIPO TYPE	CODICE CODE	CILINDRATA DISPLACEMENT cm ³ /rev.	A mm	B mm	C ASPIRAZIONE INLET	D MANDATA OUTLET	PESO WEIGHT kg
XP-4D 15	3.1.7.1.015.X.0.X.0	15	102	167	3/4" G	3/4" G	9.6
XP-4D 22	3.1.7.1.022.X.0.X.0	22	102	172	3/4" G	3/4" G	10.1
XP-4D 36	3.1.7.1.036.X.0.X.0	36	107	182	1" G	1" G	11.0
XP-4D 43	3.1.7.1.043.X.0.X.0	43	107	187	1" G	1" G	11.5
XP-4D 57	3.1.7.1.057.X.0.X.0	57	117	197	1" G	1" G	12.4
XP-4D 65	3.1.7.1.065.X.0.X.0	65	117	202	1" G	1" G	12.8
XP-4D 83	3.1.7.1.083.X.0.X.0	83	117	217	1" 1/4 G	1" G	14.1
XP-4D 102	3.1.7.1.102.X.0.X.0	102	117	229	1" 1/4 G	1" G	15.1

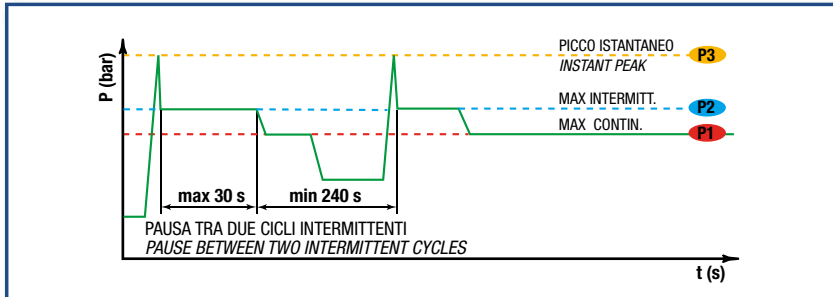
Corredato di: Tappo cod. 0.12.01.108.000 + Rondella cod. 0.04.01.157.000

Included: Plug code 0.12.01.108.000 + Washer code 0.04.01.157.000



DATI TECNICI - TECHNICAL DATA

ESEMPIO CICLI LAVORO - EXAMPLE OF WORKING CYCLES



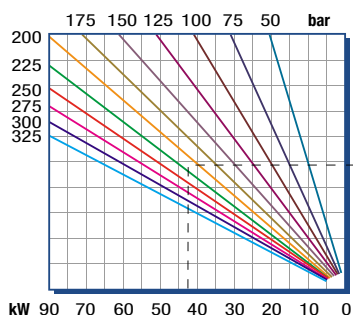
Pressione d'aspirazione: <i>Inlet pressure:</i>	0.7 ÷ 1.5 bar (assoluti/absolute)
Campo viscosità lavoro: <i>Operating viscosity range:</i>	12 ÷ 100 cSt
Temperatura fluido °C (t): <i>Fluid temperature °C (t):</i>	-10° + 80° C

Pressione Lavoro <i>Working Press.</i>	P2	Contaminazione - Contamination		Filtro - Filter βx = 75
		NAS 1638	ISO 4406	
≤ 200 bar		12	21/18	40 μm
≥ 200 bar		11	20/17	25 μm

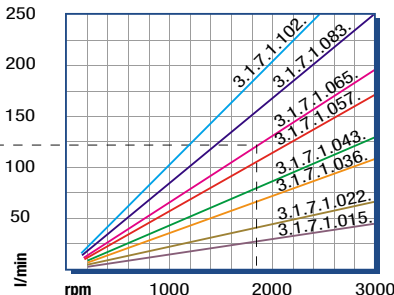
◀ **FILTRAZIONE CONSIGLIATA (ritorno o mandata)**
RECOMMENDED FILTERING (return or outlet)

TIPO - TYPE			XP-4D 15	XP-4D 22	XP-4D 36	XP-4D 43	XP-4D 57	XP-4D 65	XP-4D 83	XP-4D 102
Cilindrata <i>Displacement</i>	Vg	cm ³ /n cm ³ /rev.	15	22	36	43	57	65	84	102
Pressione massima continua <i>Max continuous operating pressure</i>	P1	bar	315	305	300	280	260	240	220	180
Pressione massima intermittente <i>Max intermitt. operating pressure</i> (max 30 s)	P2		340	330	325	305	285	265	240	200
Pressione massima di picco <i>Max peak pressure</i> (≤ 0.1 s)	P3		450	450	450	400	380	330	300	250
Velocità massima intermittente <i>Max intermittent speed</i> (P ≤ 20 bar)	n3	n/min r.p.m.	3000	3000	3000	3000	3000	3000	3000	2500
Velocità massima continua <i>Max continuous speed</i> (≤ P1)	n1		2500	2500	2500	2500	2500	2500	2500	2000
Velocità minima intermittente <i>Min intermittent speed</i> (≤ P2 x 0.5) (max 30 s)	n4		500	500	450	450	450	400	400	400

POTENZA ASSORBITA - ABSORBED POWER

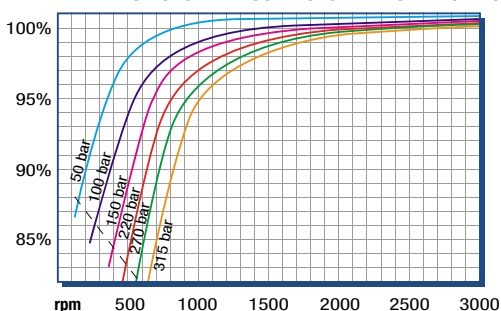


PORTATA - CAPACITY

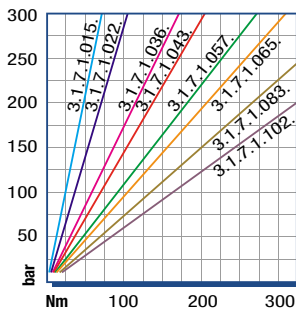


DIAGRAMMI - DIAGRAMS

RENDIMENTO VOLUMETRICO - VOLUMETRIC EFFICIENCY



COPPIA ASSORBITA - INPUT TORQUE



RILIEVI ESEGUITI CON OLIO
ISO VG 46 A 50° C (ν=30 cSt)
THE ABOVE SPECIFICATIONS
REFER TO OIL TYPE ISO
VG 46 AT 50° C (ν=30 cSt)