



SERIE **54N**

**3.1.1.6.**

CODICE DI ORDINAZIONE - *DECODING*

3.1.1.6 . XXX . 0 . 0 . 00

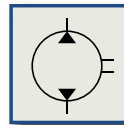
UNI  
21-222

54 26N  
54 31N  
54 46N  
54 61N

CILINDRATA/DISPLACEMENT

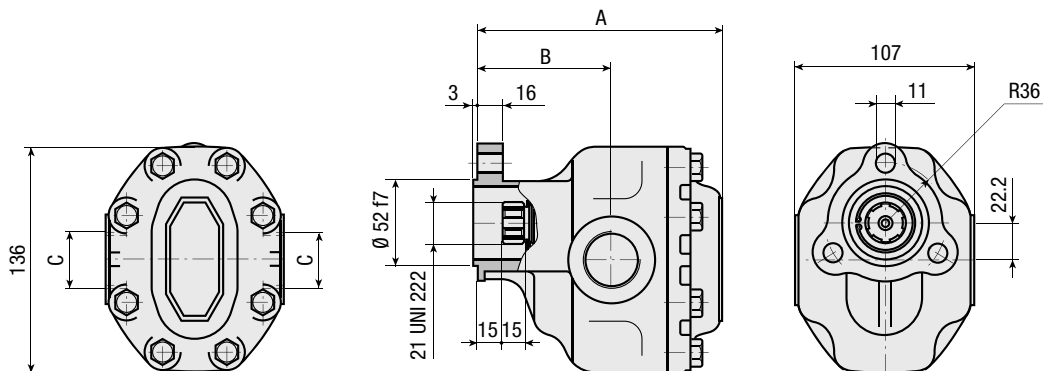
CODICE BASE/BASIC CODE

**Pompa ad Ingranaggi**  
*Gear Pump*



**CARATTERISTICHE E DATI TECNICI - SPECIFICATIONS AND TECHNICAL DATA**

TIPO TYPE	CODICE CODE	CILINDRATA DISPLACEMENT cm <sup>3</sup> /rev.	A mm	B mm	C	PESO WEIGHT kg
54 26N	3.1.1.6.036.0.0.00	36	127.3	75.3	3/4" G	5.9
54 31N	3.1.1.6.043.0.0.00	43	132.3	76.3	3/4" G	6.3
54 46N	3.1.1.6.065.0.0.00	65	149.3	81.3	1" G	7.1
54 61N	3.1.1.6.084.0.0.00	84	162.3	81.3	1" G	8.0



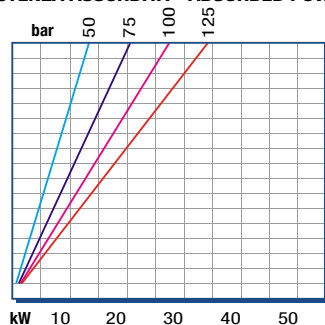
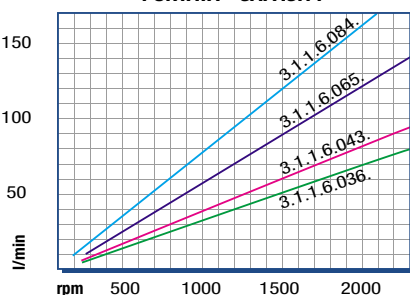
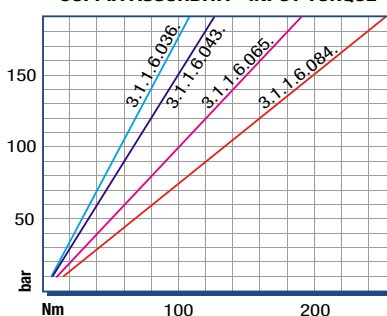
**DATI TECNICI - TECHNICAL DATA**

Pressione d'aspirazione: <i>Inlet pressure:</i>	0.6 ÷ 1 bar (assoluti/absolute)
Campo viscosità lavoro: <i>Operating viscosity range:</i>	36 ÷ 100 cSt
Temperatura fluido °C (t): <i>Fluid temperature °C (t):</i>	-10° + 80° C

Pressione Lavoro <i>Working Press.</i>	P1	Contaminazione - <i>Contamination</i>		Filtro - <i>Filter</i> βx = 75
		NAS 1638	ISO 4406	
≤ 120 bar		12	21/18	40 μm

◀ **FILTRAZIONE CONSIGLIATA** (ritorno o mandata)  
**RECOMMENDED FILTERING** (return or outlet)

TIPO - <i>TYPE</i>				54 26N	54 31N	54 46N	54 61N
Cilindrata <i>Displacement</i>	Vg	cm <sup>3</sup> /n cm <sup>3</sup> /rev.		36	43	65	84
Pressione massima continua <i>Max continuous operating pressure</i>	P1	bar		120	120	120	110
Pressione massima intermittente <i>Max intermitt. operating pressure</i>	P2 (max 1 s)		180	180	170	160	
Velocità massima intermittente <i>Max intermittent speed</i>	(P ≤ 20 bar)	n3		2200	2200	1200	1900
Velocità massima continua <i>Max continuous speed</i>	(≤ P1)	n1	n/min r.p.m.	2000	2000	1800	1700
Velocità minima intermittente <i>Min intermittent speed</i>	(≤ P2 x 0.5) (max 30 s)	n4		500	500	500	500

**DIAGRAMMI - DIAGRAMS**
**POTENZA ASSORBITA - ABSORBED POWER**

**PORTATA - CAPACITY**

**COPPIA ASSORBITA - INPUT TORQUE**


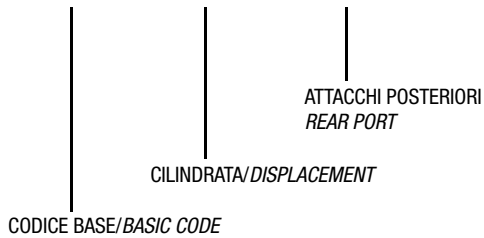


SERIE **54NT**

**3.1.1.6.**

CODICE DI ORDINAZIONE - *DECODING*

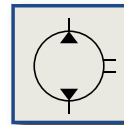
3.1.1.6 . XXX . 0 . 1 . 00



UNI  
21-222

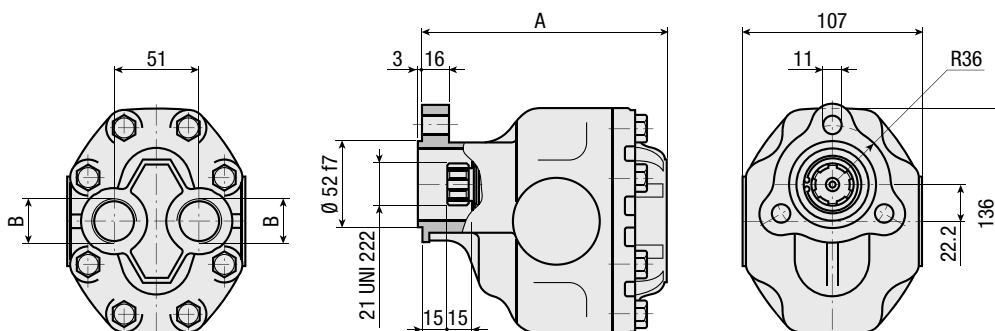
- 54 11NT
- 54 16NT
- 54 26NT
- 54 31NT
- 54 46NT

**Pompa ad Ingranaggi**  
*Gear Pump*



**CARATTERISTICHE E DATI TECNICI - SPECIFICATIONS AND TECHNICAL DATA**

TIPO TYPE	CODICE CODE	CILINDRATA DISPLACEMENT cm <sup>3</sup> /rev.	A mm	B	PESO WEIGHT kg
54 11NT	3.1.1.6.015.0.1.00	15	112.3	3/4" G	4.9
54 16NT	3.1.1.6.022.0.1.00	22	117.3	3/4" G	5.3
54 26NT	3.1.1.6.036.0.1.00	36	127.3	3/4" G	6.0
54 31NT	3.1.1.6.043.0.1.00	43	132.3	3/4" G	6.4
54 46NT	3.1.1.6.065.0.1.00	65	147.3	3/4" G	7.2





**DATI TECNICI - TECHNICAL DATA**

Pressione d'aspirazione: <i>Inlet pressure:</i>	0.6 ÷ 1 bar (assoluti/absolute)
Campo viscosità lavoro: <i>Operating viscosity range:</i>	36 ÷ 100 cSt
Temperatura fluido °C (t): <i>Fluid temperature °C (t):</i>	-10° + 80° C

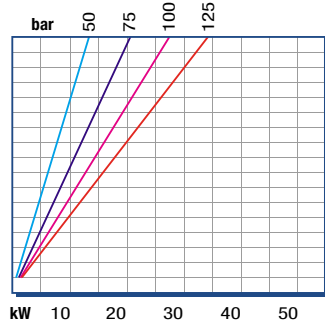
Pressione Lavoro <i>Working Press.</i>	P1	Contaminazione - <i>Contamination</i>		Filtro - <i>Filter</i> βx = 75
		NAS 1638	ISO 4406	
≤ 120 bar		12	21/18	40 μm

◀ **FILTRAZIONE CONSIGLIATA** (ritorno o mandata)  
**RECOMMENDED FILTERING** (return or outlet)

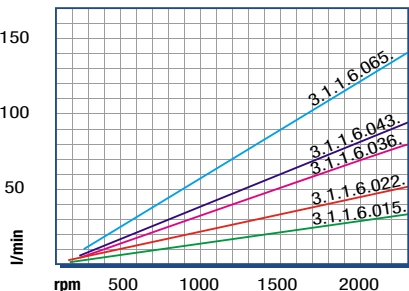
TIPO - <i>TYPE</i>			54 11NT	54 16NT	54 26NT	54 31NT	54 46NT
Cilindrata <i>Displacement</i>	Vg	cm <sup>3</sup> /n cm <sup>3</sup> /rev.	15	22	36	43	65
Pressione massima continua <i>Max continuous operating pressure</i>	P1	bar	120	120	120	120	120
Pressione massima intermittente <i>Max intermitt. operating pressure</i>	P2 (max 1 s)		180	180	180	180	170
Velocità massima intermittente <i>Max intermittent speed</i>	(P ≤ 20 bar)	n3	2200	2200	2200	2200	1500
Velocità massima continua <i>Max continuous speed</i>	(≤ P1)	n1	2000	2000	2000	2000	1300
Velocità minima intermittente <i>Min intermittent speed</i>	(≤ P2 x 0.5) (max 30 s)	n4	500	500	500	500	500

**DIAGRAMMI - DIAGRAMS**

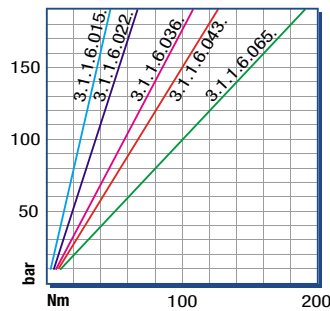
**POTENZA ASSORBITA - ABSORBED POWER**



**PORTATA - CAPACITY**



**COPPIA ASSORBITA - INPUT TORQUE**

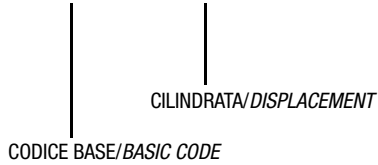




# SERIE 69N

CODICE DI ORDINAZIONE - DECODING

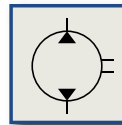
3.1.1.7 . XXX . 0 . 0 . 00



# 3.1.1.7.

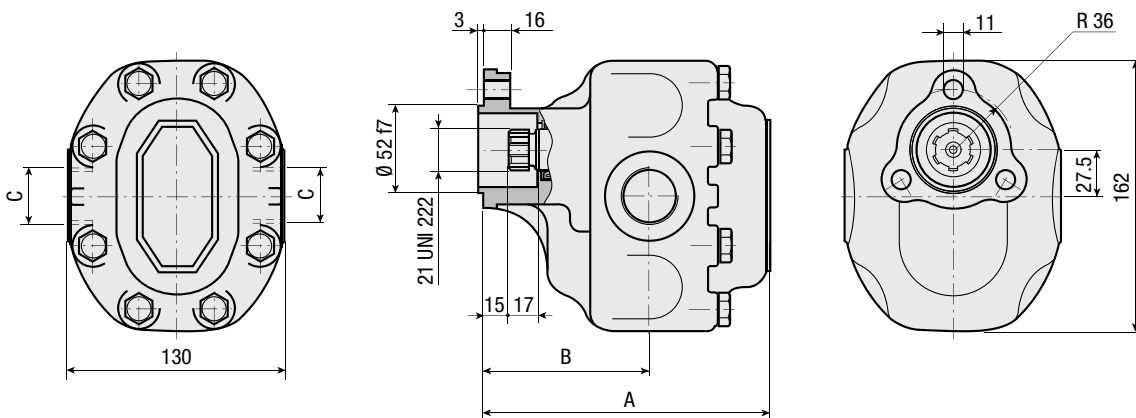
UNI 69 42N  
 69 50N  
 69 60N  
 21-222

## Pompa ad Ingranaggi Gear Pump



### CARATTERISTICHE E DATI TECNICI - SPECIFICATIONS AND TECHNICAL DATA

TIPO TYPE	CODICE CODE	CILINDRATA DISPLACEMENT cm <sup>3</sup> /rev.	A mm	B mm	C	PESO WEIGHT kg
69 42N	3.1.1.7.105.0.0.00	105	170.5	98.7	1" G	11.7
69 50N	3.1.1.7.125.0.0.00	125	178.5	98.7	1" ¼ G	12.3
69 60N	3.1.1.7.150.0.0.00	150	188.5	98.7	1" ¼ G	13.3





**DATI TECNICI - TECHNICAL DATA**

Pressione d'aspirazione: <i>Inlet pressure:</i>	0.6 ÷ 1 bar (assoluti/absolute)
Campo viscosità lavoro: <i>Operating viscosity range:</i>	36 ÷ 100 cSt
Temperatura fluido °C (t): <i>Fluid temperature °C (t):</i>	-10° + 80° C

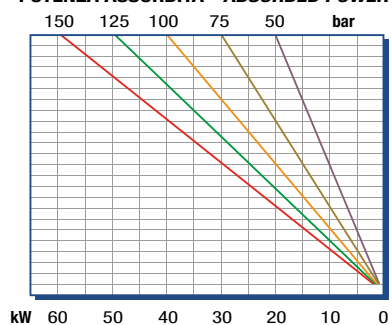
Pressione Lavoro <i>Working Press.</i>	P1	Contaminazione - <i>Contamination</i>		Filtro - <i>Filter</i> βx = 75
		NAS 1638	ISO 4406	
≤ 140 bar		12	21/18	40 μm

◀ **FILTRAZIONE CONSIGLIATA** (ritorno o mandata)  
**RECOMMENDED FILTERING** (return or outlet)

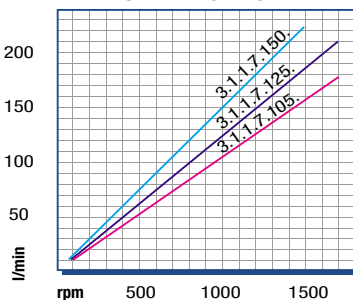
TIPO - <i>TYPE</i>			69 42N	69 50N	69 60N
Cilindrata <i>Displacement</i>	Vg	cm <sup>3</sup> /n cm <sup>3</sup> /rev.	105	125	150
Pressione massima continua <i>Max continuous operating pressure</i>	P1	bar	140	135	125
Pressione massima intermittente <i>Max intermitt. operating pressure</i>	P2 (max 1 s)		190	185	175
Velocità massima intermittente <i>Max intermittent speed</i>	(P ≤ 20 bar)	n3	1900	1900	1700
Velocità massima continua <i>Max continuous speed</i>	(≤ P1)	n1	1700	1700	1500
Velocità minima intermittente <i>Min intermittent speed</i>	(≤ P2 x 0.5) (max 30 s)	n4	500	500	500

**DIAGRAMMI - DIAGRAMS**

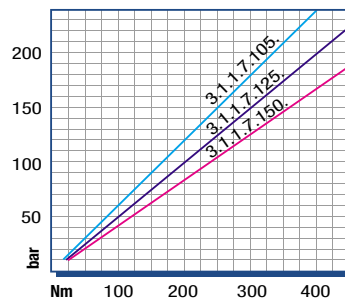
**POTENZA ASSORBITA - ABSORBED POWER**



**PORTATA - CAPACITY**



**COPPIA ASSORBITA - INPUT TORQUE**





# SERIE XP

# 3.1.2.3.

## Pompa ad Ingranaggi Gear Pump

CODICE DI ORDINAZIONE - DECODING

3.1.2.3 . XXX . X . 0 . X . 0

UNI  
21-222

- XP 15
- XP 22
- XP 36
- XP 43
- XP 57
- XP 65
- XP 75
- XP 83
- XP 102

ALLESTIMENTI SPECIALI/SPECIAL OPTIONS  
 0 = NON RICHIESTO/STANDARD OPTION  
 7 = ASPIRAZIONE LATERALE - MANDATA IN TESTA  
 SIDE INLET - REAR OUTLET

ROTAZIONE/ROTATION  
 1 = SINISTRO/ANTICLOCKWISE  
 2 = DESTRO/CLOCKWISE

CILINDRATA/DISPLACEMENT

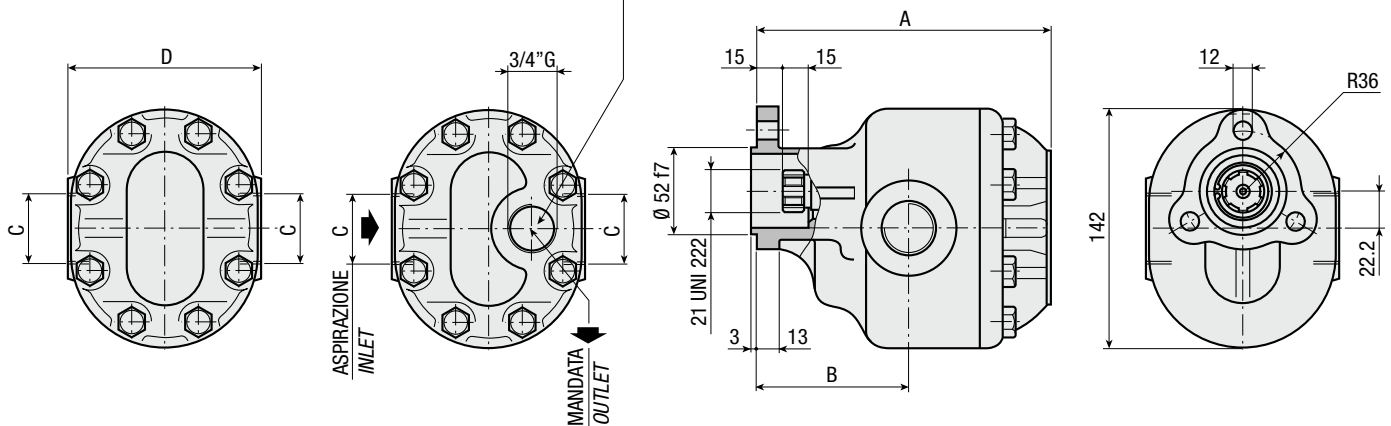
CODICE BASE/BASIC CODE



### CARATTERISTICHE E DATI TECNICI - SPECIFICATIONS AND TECHNICAL DATA

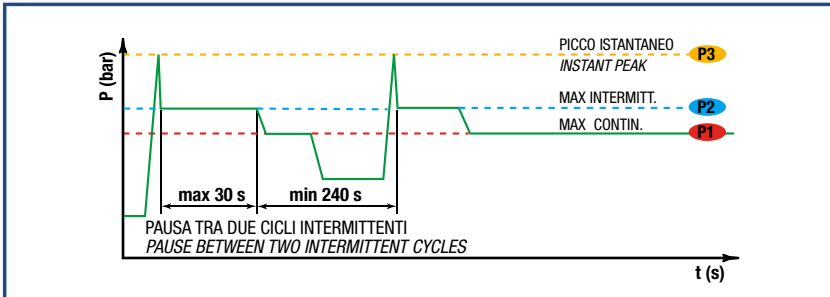
TIPO TYPE	CODICE CODE	CILINDRATA DISPLACEMENT cm <sup>3</sup> /rev.	A mm	B mm	C	D mm	PESO WEIGHT kg
XP 15	3.1.2.3.015.X.0.X.0	15	139	76	3/4" G	116	6.7
XP 22	3.1.2.3.022.X.0.X.0	22	144	76	3/4" G	116	7.2
XP 36	3.1.2.3.036.X.0.X.0	36	154	76	3/4" G	116	8.1
XP 43	3.1.2.3.043.X.0.X.0	43	159	90.5	1" G	116	8.6
XP 57	3.1.2.3.057.X.0.X.0	57	169	90.5	1" G	116	9.5
XP 65	3.1.2.3.065.X.0.X.0	65	174	90.5	1" G	116	9.9
XP 75	3.1.2.3.075.X.0.X.0	75	182	90.5	1" G	116	10.6
XP 83	3.1.2.3.083.X.0.X.0	83	189	90.5	1" G	116	11.2
XP 102	3.1.2.3.102.X.0.X.0	102	201	99.5	1" 1/4 G	120	12.2

Corredato di: Tappo cod. 0.12.01.108.000 + Rondella cod. 0.04.01.157.000  
 Included: Plug code 0.12.01.108.000 + Washer code 0.04.01.157.000



**DATI TECNICI - TECHNICAL DATA**

**ESEMPIO CICLI LAVORO - EXAMPLE OF WORKING CYCLES**



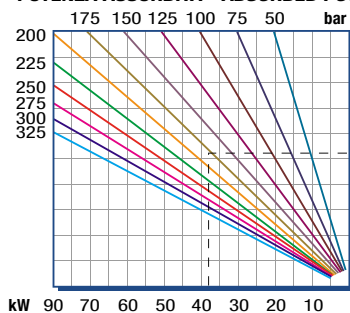
Pressione d'aspirazione: <i>Inlet pressure:</i>	0.7 ÷ 1.5 bar (assoluti/absolute)
Campo viscosità lavoro: <i>Operating viscosity range:</i>	12 ÷ 100 cSt
Temperatura fluido °C (t): <i>Fluid temperature °C (t):</i>	-10° + 80° C

Pressione Lavoro <i>Working Press.</i>	P2	Contaminazione - <i>Contamination</i>		Filtro - <i>Filter</i> βx = 75
		NAS 1638	ISO 4406	
≤ 200 bar		12	21/18	40 μm
≥ 200 bar		11	20/17	25 μm

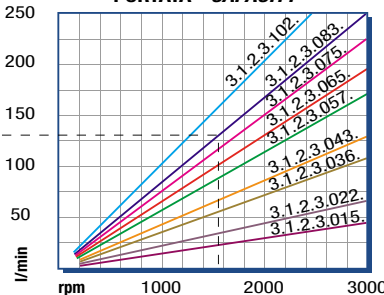
◀ **FILTRAZIONE CONSIGLIATA (ritorno o mandata)**  
**RECOMMENDED FILTERING (return or outlet)**

TIPO - <i>TYPE</i>			XP 15	XP 22	XP 36	XP 43	XP 57	XP 65	XP 75	XP 83	XP 102
Cilindrata <i>Displacement</i>	Vg	cm <sup>3</sup> /n cm <sup>3</sup> /rev.	15	22	36	43	57	65	75	83	102
Pressione massima continua <i>Max continuous operating pressure</i>		P1	315	305	300	280	260	240	220	210	180
Pressione massima intermittente <i>Max intermitt. operating pressure</i>	(max 30 s)	P2	340	330	325	305	285	265	240	230	200
Pressione massima di picco <i>Max peak pressure</i>	(≤ 0.1 s)	P3	450	450	450	400	380	330	320	300	250
Velocità massima intermittente <i>Max intermittent speed</i>	(P ≤ 20 bar)	n3	3000	3000	3000	3000	3000	3000	3000	3000	2500
Velocità massima continua <i>Max continuous speed</i>	(≤ P1)	n1	2500	2500	2500	2500	2500	2500	2500	2500	2000
Velocità minima intermittente <i>Min intermittent speed</i>	(≤ P2 x 0.5) (max 30 s)	n4	450	450	350	350	300	300	300	300	300

**POTENZA ASSORBITA - ABSORBED POWER**

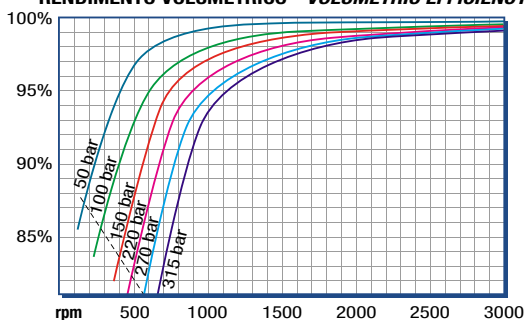


**PORTATA - CAPACITY**

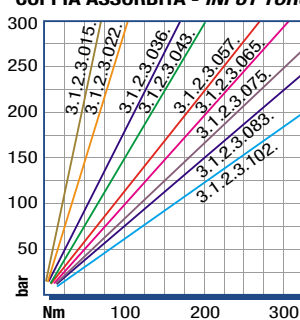


**DIAGRAMMI - DIAGRAMS**

**RENDIMENTO VOLUMETRICO - VOLUMETRIC EFFICIENCY**



**COPPIA ASSORBITA - INPUT TORQUE**



RILIEVI ESEGUITI CON OLIO  
ISO VG 46 A 50° C (ν=30 cSt)  
THE ABOVE SPECIFICATIONS  
REFER TO OIL TYPE ISO  
VG 46 AT 50° C (ν=30 cSt)





# SERIE XP

# 3.1.2.4.

## Pompa ad Ingranaggi Gear Pump

CODICE DI ORDINAZIONE - *DECODING*

3.1.2.4 . XXX . X . 0 . 0 . 0

UNI  
21-222

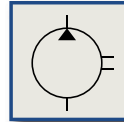
XP 73  
XP 84  
XP 100  
XP 116  
XP 132  
XP 148

ALLESTIMENTI SPECIALI/SPECIAL OPTIONS  
0 = NON RICHiesto/STANDARD OPTION

ROTAZIONE/ROTATION  
1 = SINISTRO/ANTICLOCKWISE  
2 = DESTRO/CLOCKWISE

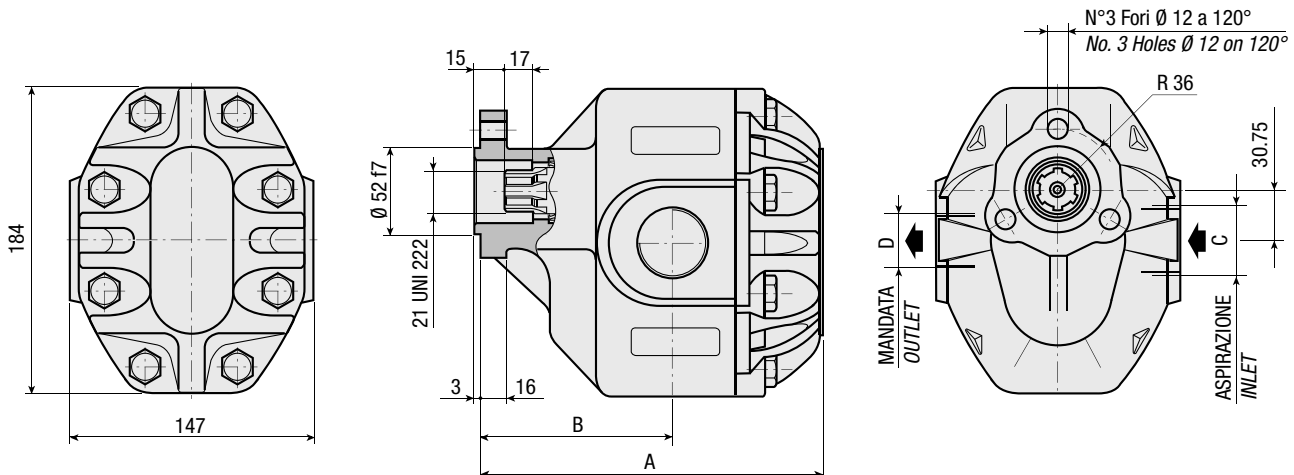
CILINDRATA/DISPLACEMENT

CODICE BASE/BASIC CODE



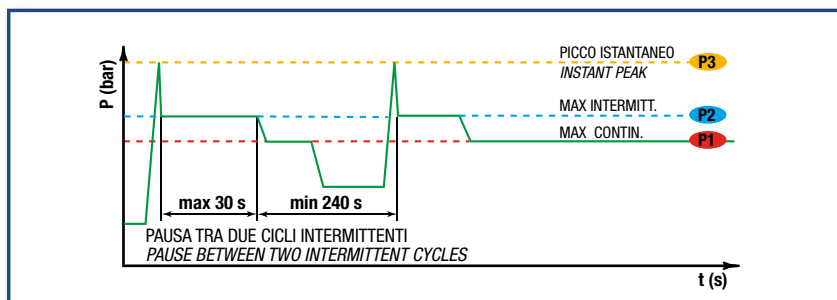
### CARATTERISTICHE E DATI TECNICI - SPECIFICATIONS AND TECHNICAL DATA

TIPO TYPE	CODICE CODE	CILINDRATA DISPLACEMENT cm <sup>3</sup> /rev.	A mm	B mm	C ASPIRAZIONE INLET	D MANDATA OUTLET	PESO WEIGHT kg
XP 73	3.1.2.4.073.X.0.0.0	73	190	106	1" G	3/4" G	17.3
XP 84	3.1.2.4.084.X.0.0.0	84	194	107	1" 1/4 G	1" G	17.9
XP 100	3.1.2.4.100.X.0.0.0	100	200	111	1" 1/4 G	1" G	18.8
XP 116	3.1.2.4.116.X.0.0.0	116	206	116	1" 1/4 G	1" G	19.7
XP 132	3.1.2.4.132.X.0.0.0	132	212	119.5	1" 1/2 G	1" G	20.6
XP 148	3.1.2.4.148.X.0.0.0	148	218	119.5	1" 1/2 G	1" G </td <td>21.5</td>	21.5



**DATI TECNICI - TECHNICAL DATA**

**ESEMPIO CICLI LAVORO - EXAMPLE OF WORKING CYCLES**



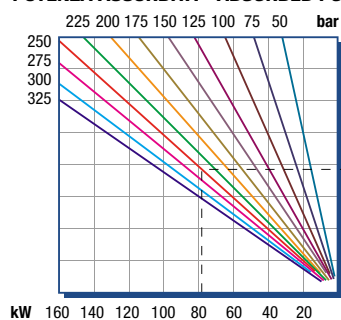
Pressione d'aspirazione: <i>Inlet pressure:</i>	0.7 ÷ 1.5 bar (assoluti/absolute)
Campo viscosità lavoro: <i>Operating viscosity range:</i>	12 ÷ 100 cSt
Temperatura fluido °C (t): <i>Fluid temperature °C (t):</i>	-10° + 80° C

Pressione Lavoro <i>Working Press.</i>	P2	Contaminazione - Contamination		Filtro - Filter βx = 75
		NAS 1638	ISO 4406	
≤ 200 bar		12	21/18	40 μm
≥ 200 bar		11	20/17	25 μm

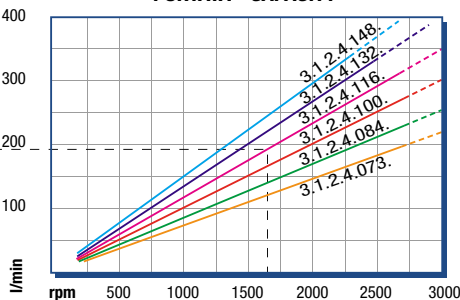
◀ **FILTRAZIONE CONSIGLIATA (ritorno o mandata)**  
**RECOMMENDED FILTERING (return or outlet)**

TIPO - TYPE			XP 73	XP 84	XP 100	XP 116	XP 132	XP 148	
Cilindrata <i>Displacement</i>	Vg	cm <sup>3</sup> /n cm <sup>3</sup> /rev.	73	84	100	116	132	148	
Pressione massima continua <i>Max continuous operating pressure</i>	P1	bar	290	270	260	250	230	190	
Pressione massima intermittente <i>Max intermitt. operating pressure</i>	(max 30 s)		P2	320	310	290	280	270	230
Pressione massima di picco <i>Max peak pressure</i>	(≤ 0.1 s)		P3	450	375	375	340	315	270
Velocità massima intermittente <i>Max intermittent speed</i>	(P ≤ 20 bar)	n3	n/min r.p.m.	3800	3500	3500	3000	3000	3000
Velocità massima continua <i>Max continuous speed</i>	(≤ P1)	n1		2700	2700	2700	2700	2700	2700
Velocità minima intermittente <i>Min intermittent speed</i>	(≤ P2 x 0.5) (max 30 s)	n4		350	350	300	300	300	300

**POTENZA ASSORBITA - ABSORBED POWER**



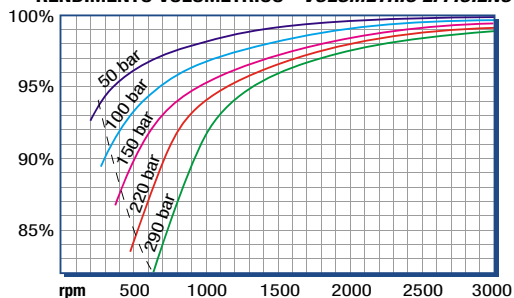
**PORTATA - CAPACITY**



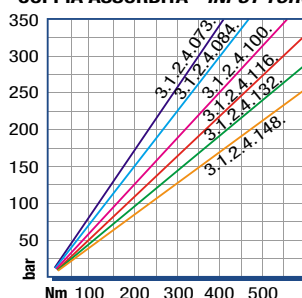
RILIEVI ESEGUITI CON OLIO  
ISO VG 46 A 50° C (ν=30 cSt)  
THE ABOVE SPECIFICATIONS  
REFER TO OIL TYPE ISO  
VG 46 AT 50° C (ν=30 cSt)

**DIAGRAMMI - DIAGRAMS**

**RENDIMENTO VOLUMETRICO - VOLUMETRIC EFFICIENCY**



**COPIA ASSORBITA - INPUT TORQUE**





# SERIE 54SCN 3.1.5.6.

CODICE DI ORDINAZIONE - *DECODING*

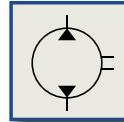
3.1.5.6 . XXX . 0 . 0 . 00

CILINDRATA/DISPLACEMENT

CODICE BASE/BASIC CODE

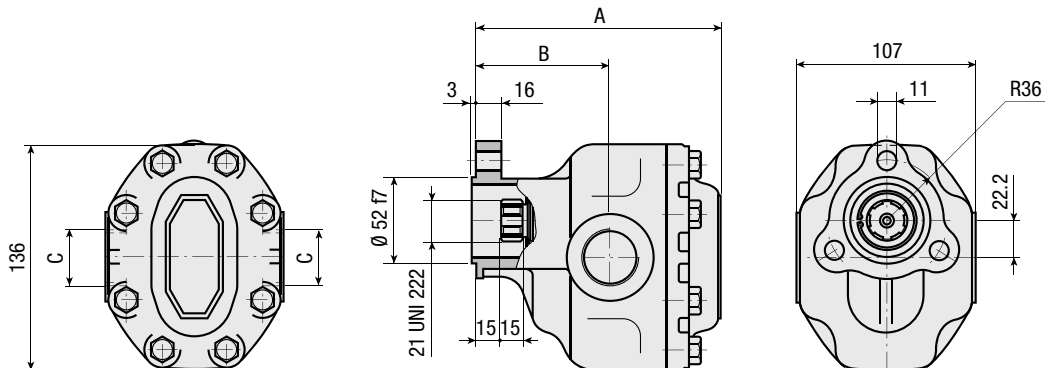
UNI 54 26SCN  
54 31SCN  
21-222 54 46SCN  
54 61SCN

**Pompa ad Ingranaggi**  
*Gear Pump*



## CARATTERISTICHE E DATI TECNICI - *SPECIFICATIONS AND TECHNICAL DATA*

TIPO TYPE	CODICE CODE	CILINDRATA DISPLACEMENT cm <sup>3</sup> /rev.	A mm	B mm	C	PESO WEIGHT kg
54 26SCN	3.1.5.6.036.0.0.00	36	127.3	75.3	3/4" G	5.9
54 31SCN	3.1.5.6.043.0.0.00	43	132.3	76.3	3/4" G	6.3
54 46SCN	3.1.5.6.065.0.0.00	65	147.0	80.0	1" G	7.1
54 61SCN	3.1.5.6.084.0.0.00	84	162.0	80.0	1" G	8.0





**DATI TECNICI - TECHNICAL DATA**

Pressione d'aspirazione: <i>Inlet pressure:</i>	0.6 ÷ 1 bar (assoluti/absolute)
Campo viscosità lavoro: <i>Operating viscosity range:</i>	36 ÷ 100 cSt
Temperatura fluido °C (t): <i>Fluid temperature °C (t):</i>	-10° + 80° C

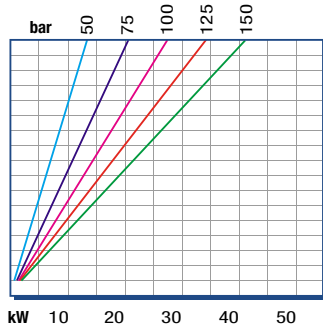
Pressione Lavoro <i>Working Press.</i>	P1	Contaminazione - <i>Contamination</i>		Filtro - <i>Filter</i> βx = 75
		NAS 1638	ISO 4406	
≤ 150 bar		12	21/18	40 μm

◀ **FILTRAZIONE CONSIGLIATA** (ritorno o mandata)  
**RECOMMENDED FILTERING** (return or outlet)

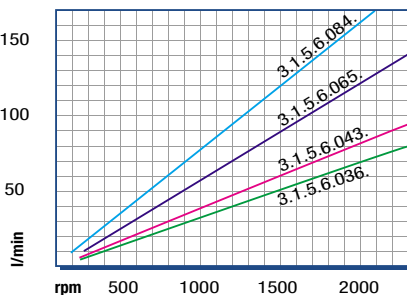
TIPO - <i>TYPE</i>				54 26SCN	54 31SCN	54 46SCN	54 61SCN
Cilindrata <i>Displacement</i>	Vg	cm <sup>3</sup> /n cm <sup>3</sup> /rev.		36	43	65	84
Pressione massima continua <i>Max continuous operating pressure</i>	P1	bar		150	150	140	130
Pressione massima intermittente <i>Max intermitt. operating pressure</i>	(max 1 s) P2		180	180	170	160	
Velocità massima intermittente <i>Max intermittent speed</i>	(P ≤ 20 bar) n3	n/min r.p.m.		2000	2000	2000	1800
Velocità massima continua <i>Max continuous speed</i>	(≤ P1) n1		1500	1400	1300	1200	
Velocità minima intermittente <i>Min intermittent speed</i>	(≤ P2 x 0.5) (max 30 s) n4		500	500	500	500	

**DIAGRAMMI - DIAGRAMS**

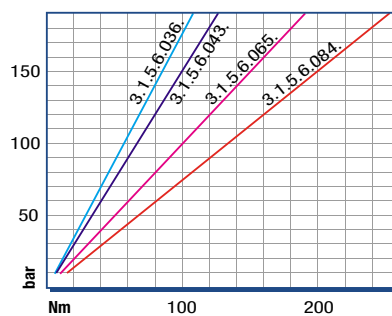
**POTENZA ASSORBITA - ABSORBED POWER**



**PORTATA - CAPACITY**



**COPPIA ASSORBITA - INPUT TORQUE**

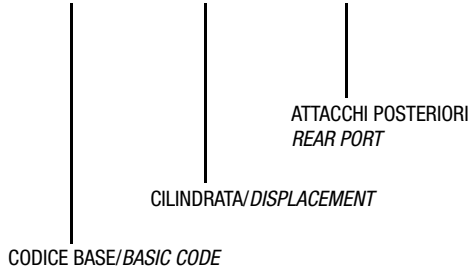




# SERIE 54SCT 3.1.5.6.

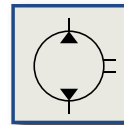
CODICE DI ORDINAZIONE - DECODING

3.1.5.6 . XXX . 0 . 1 . 00



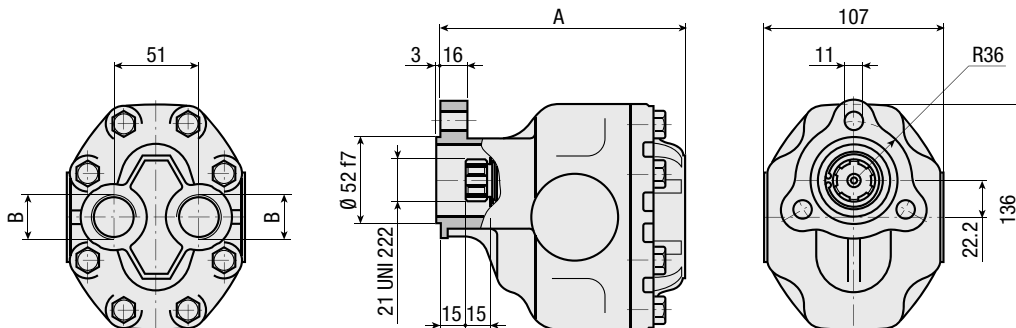
UNI 54 11SCT  
54 16SCT  
21-222 54 26SCT  
54 31SCT

## Pompa ad Ingranaggi Gear Pump



### CARATTERISTICHE E DATI TECNICI - SPECIFICATIONS AND TECHNICAL DATA

TIPO TYPE	CODICE CODE	CILINDRATA DISPLACEMENT cm <sup>3</sup> /rev.	A mm	B	PESO WEIGHT kg
54 11SCT	3.1.5.6.015.0.1.00	15	112.3	3/4" G	4.9
54 16SCT	3.1.5.6.022.0.1.00	22	117.3	3/4" G	5.3
54 26SCT	3.1.5.6.036.0.1.00	36	127.3	3/4" G	6.0
54 31SCT	3.1.5.6.043.0.1.00	43	132.3	3/4" G	6.4





**DATI TECNICI - TECHNICAL DATA**

Pressione d'aspirazione: <i>Inlet pressure:</i>	0.6 ÷ 1 bar (assoluti/absolute)
Campo viscosità lavoro: <i>Operating viscosity range:</i>	36 ÷ 100 cSt
Temperatura fluido °C (t): <i>Fluid temperature °C (t):</i>	-10° + 80° C

Pressione Lavoro <i>Working Press.</i>	P1	Contaminazione - <i>Contamination</i>		Filtro - <i>Filter</i> βx = 75
		NAS 1638	ISO 4406	
≤ 150 bar		12	21/18	40 μm

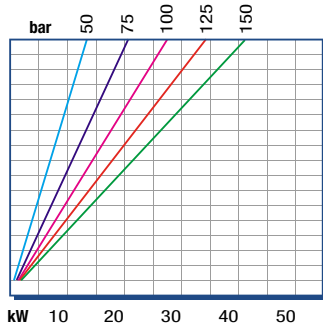
◀ **FILTRAZIONE CONSIGLIATA** (ritorno o mandata)  
**RECOMMENDED FILTERING** (return or outlet)

**SERIE 54SCT 3.1.5.6.**

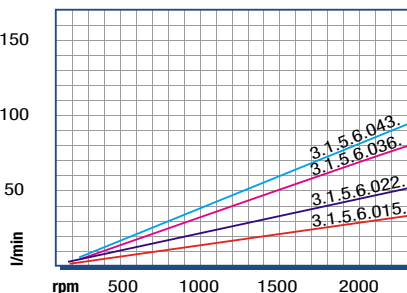
TIPO - <i>TYPE</i>				54 11SCT	54 16SCT	54 26SCT	54 31SCT
Cilindrata <i>Displacement</i>	Vg	cm <sup>3</sup> /n cm <sup>3</sup> /rev.		15	22	36	43
Pressione massima continua <i>Max continuous operating pressure</i>	P1	bar		150	150	150	150
Pressione massima intermittente <i>Max intermitt. operating pressure</i>	P2 (max 1 s)		180	180	180	180	
Velocità massima intermittente <i>Max intermittent speed</i>	(P ≤ 20 bar)	n3	n/min r.p.m.	2200	2100	2000	2000
Velocità massima continua <i>Max continuous speed</i>	(≤ P1)	n1		1600	1500	1500	1400
Velocità minima intermittente <i>Min intermittent speed</i>	(≤ P2 x 0.5) (max 30 s)	n4		500	500	500	500

**DIAGRAMMI - DIAGRAMS**

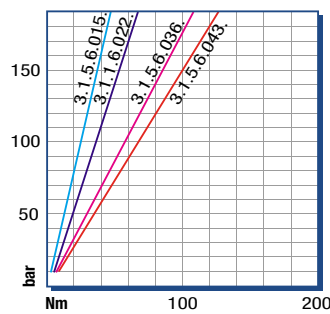
**POTENZA ASSORBITA - ABSORBED POWER**



**PORTATA - CAPACITY**



**COPPIA ASSORBITA - INPUT TORQUE**



POMPE AD INGRANAGGI GEAR PUMPS