



SERIE XP TANDEM

3.1.2.3.

CODICE DI ORDINAZIONE - *DECODING*

3.1.2.3 . XXX . X . 0 . 1 . 0

UNI
21-222

- XP 15X
- XP 22X
- XP 36X
- XP 43X
- XP 57X
- XP 65X
- XP 75X
- XP 83X
- XP 102X

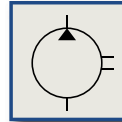
ALLESTIMENTI SPECIALI/SPECIAL OPTIONS
1 = MONTAGGIO IN TANDEM/TANDEM FITTING

ROTAZIONE/ROTATION
1 = SINISTRO/ANTICLOCKWISE
2 = DESTRO/CLOCKWISE

CILINDRATA/DISPLACEMENT

CODICE BASE/BASIC CODE

Pompa ad Ingranaggi Gear Pump

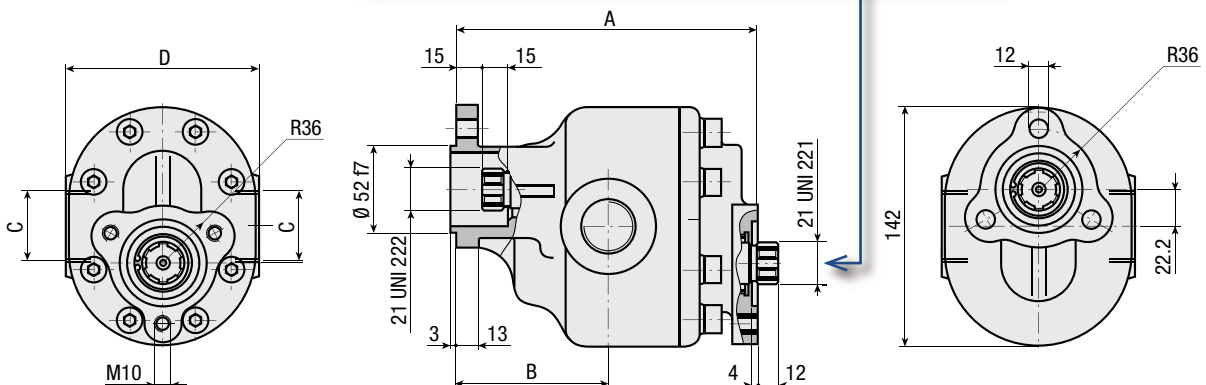


CARATTERISTICHE E DATI TECNICI - SPECIFICATIONS AND TECHNICAL DATA

TIPO TYPE	CODICE CODE	CILINDRATA DISPLACEMENT cm ³ /rev.	A mm	B mm	C	D mm	PESO WEIGHT kg
XP 15X	3.1.2.3.015.X.0.1.0	15	144	76	3/4" G	116	6.75
XP 22X	3.1.2.3.022.X.0.1.0	22	149	76	3/4" G	116	7.25
XP 36X	3.1.2.3.036.X.0.1.0	36	159	76	3/4" G	116	8.15
XP 43X	3.1.2.3.043.X.0.1.0	43	164	90.5	1" G	116	8.65
XP 57X	3.1.2.3.057.X.0.1.0	57	174	90.5	1" G	116	9.55
XP 65X	3.1.2.3.065.X.0.1.0	65	179	90.5	1" G	116	9.95
XP 75X	3.1.2.3.075.X.0.1.0	75	187	90.5	1" G	116	10.65
XP 83X	3.1.2.3.083.X.0.1.0	83	194	90.5	1" G	116	11.25
XP 102X	3.1.2.3.102.X.0.1.0	102	206	99.5	1" 1/4 G	120	12.25

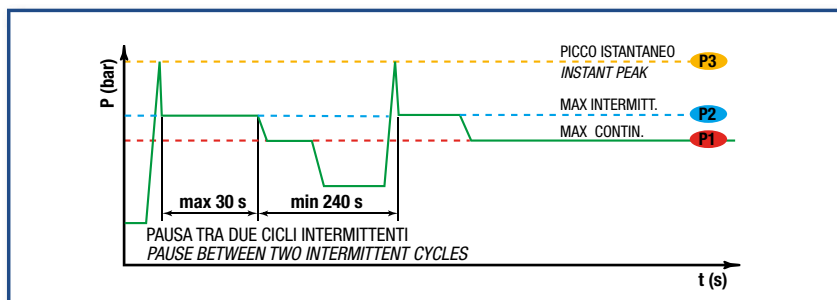
KIT ACCOPIAMENTO POSTERIORE REAR MOUNTING KIT

2.05.P002.0000



DATI TECNICI - TECHNICAL DATA

ESEMPIO CICLI LAVORO - EXAMPLE OF WORKING CYCLES



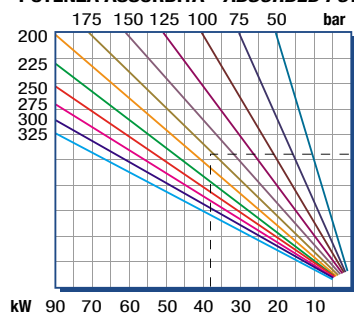
Pressione d'aspirazione: <i>Inlet pressure:</i>	0.7 ÷ 1.5 bar (assoluti/absolute)
Campo viscosità lavoro: <i>Operating viscosity range:</i>	12 ÷ 100 cSt
Temperatura fluido °C (t): <i>Fluid temperature °C (t):</i>	-10° + 80° C

Pressione Lavoro <i>Working Press.</i>	P2	Contaminazione - Contamination		Filtro - Filter βx = 75
		NAS 1638	ISO 4406	
≤ 200 bar		12	21/18	40 μm
≥ 200 bar		11	20/17	25 μm

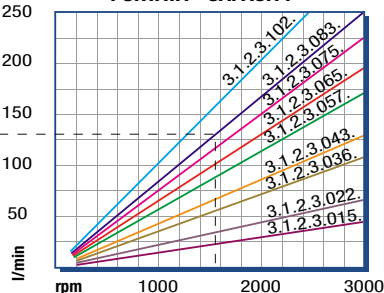
◀ **FILTRAZIONE CONSIGLIATA (ritorno o mandata)**
RECOMMENDED FILTERING (return or outlet)

TIPO - TYPE			XP 15X	XP 22X	XP 36X	XP 43X	XP 57X	XP 65X	XP 75X	XP 83X	XP 102X	
Cilindrata <i>Displacement</i>	Vg	cm ³ /n cm ³ /rev.	15	22	36	43	57	65	75	83	102	
Pressione massima continua <i>Max continuous operating pressure</i>	P1	bar	315	305	300	280	260	240	220	210	180	
Pressione massima intermittente <i>Max intermitt. operating pressure</i>	(max 30 s)		P2	340	330	325	305	285	265	240	230	200
Pressione massima di picco <i>Max peak pressure</i>	(≤ 0.1 s)		P3	450	450	450	400	380	350	320	300	250
Velocità massima intermittente <i>Max intermittent speed</i>	(P ≤ 20 bar)	n3	3000	3000	3000	3000	3000	3000	3000	3000	2500	
Velocità massima continua <i>Max continuous speed</i>	(≤ P1)	n1	2500	2500	2500	2500	2500	2500	2500	2500	2000	
Velocità minima intermittente <i>Min intermittent speed</i>	(≤ P2 x 0.5) (max 30 s)	n4	450	450	350	350	300	300	300	300	300	

POTENZA ASSORBITA - ABSORBED POWER



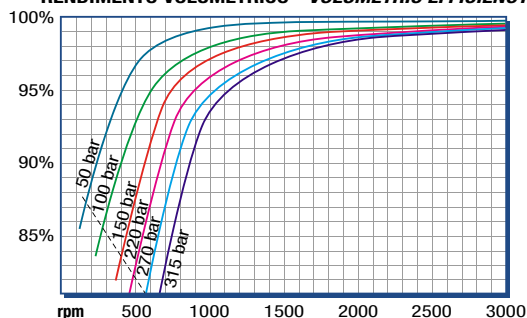
PORTATA - CAPACITY



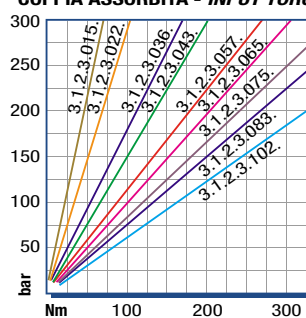
RILIEVI ESEGUITI CON OLIO
ISO VG 46 A 50° C (ν=30 cSt)
THE ABOVE SPECIFICATIONS
REFER TO OIL TYPE ISO
VG 46 AT 50° C (ν=30 cSt)

DIAGRAMMI - DIAGRAMS

RENDIMENTO VOLUMETRICO - VOLUMETRIC EFFICIENCY



COPPIA ASSORBITA - INPUT TORQUE





SERIE XP TANDEM

3.1.2.4.

CODICE DI ORDINAZIONE - DECODING

3.1.2.4 . XXX . X . 0 . 1 . 0

UNI
21-222

XP 73X
XP 84X
XP 100X
XP 116X
XP 132X
XP 148X

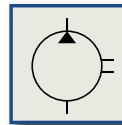
ALLESTIMENTI SPECIALI/SPECIAL OPTIONS
1 = MONTAGGIO IN TANDEM/TANDEM FITTING

ROTAZIONE/ROTATION
1 = SINISTRO/ANTICLOCKWISE
2 = DESTRO/CLOCKWISE

CILINDRATA/DISPLACEMENT

CODICE BASE/BASIC CODE

Pompa ad Ingranaggi Gear Pump

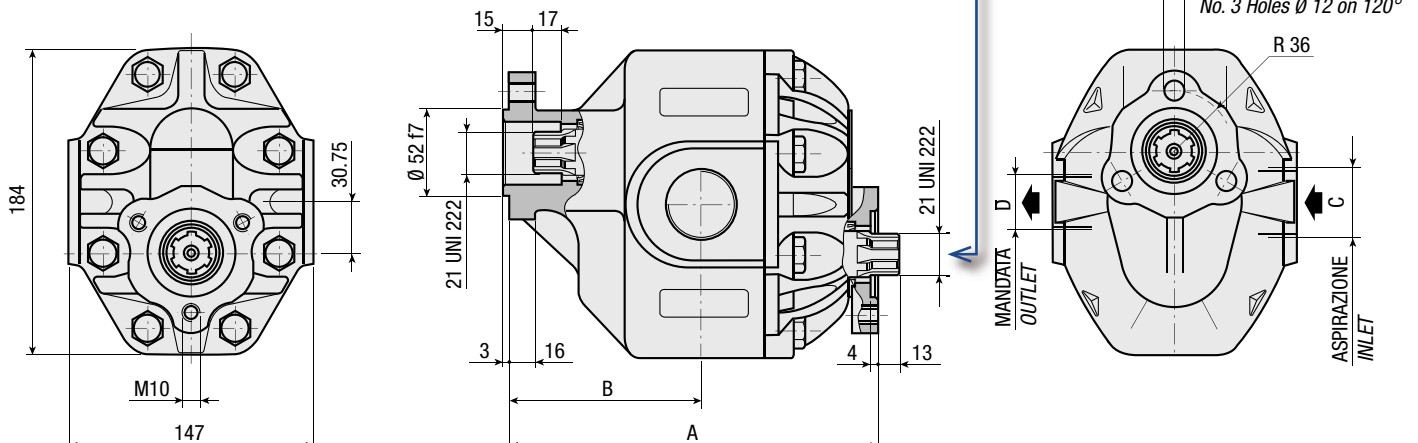


CARATTERISTICHE E DATI TECNICI - SPECIFICATIONS AND TECHNICAL DATA

TIPO TYPE	CODICE CODE	CILINDRATA DISPLACEMENT cm ³ /rev.	A mm	B mm	C ASPIRAZIONE INLET	D MANDATA OUTLET	PESO WEIGHT kg
XP 73X	3.1.2.4.073.X.0.1.0	73	205	106	1" G	3/4" G	17.4
XP 84X	3.1.2.4.084.X.0.1.0	84	209	107	1" 1/4 G	1" G	18.0
XP 100X	3.1.2.4.100.X.0.1.0	100	215	111	1" 1/4 G	1" G	18.9
XP 116X	3.1.2.4.116.X.0.1.0	116	221	116	1" 1/4 G	1" G	19.8
XP 132X	3.1.2.4.132.X.0.1.0	132	227	119.5	1" 1/2 G	1" G	20.7
XP 148X	3.1.2.4.148.X.0.1.0	148	233	119.5	1" 1/2 G	1" G	21.6

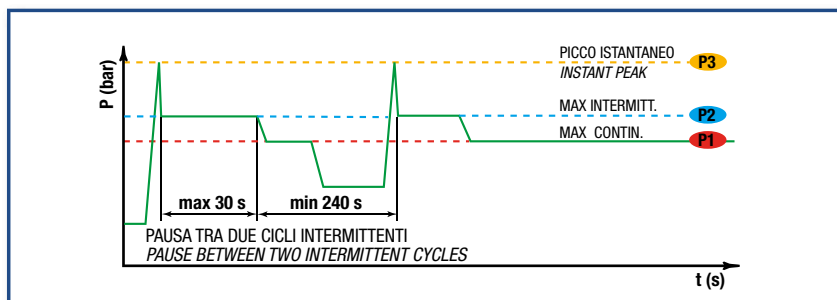
KIT ACCOPPIAMENTO POSTERIORE
REAR MOUNTING KIT

2.05.P002.0000



DATI TECNICI - TECHNICAL DATA

ESEMPIO CICLI LAVORO - EXAMPLE OF WORKING CYCLES



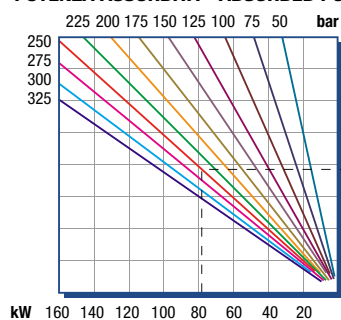
Pressione d'aspirazione: <i>Inlet pressure:</i>	0.7 ÷ 1.5 bar (assoluti/absolute)
Campo viscosità lavoro: <i>Operating viscosity range:</i>	12 ÷ 100 cSt
Temperatura fluido °C (t): <i>Fluid temperature °C (t):</i>	-10° + 80° C

Pressione Lavoro <i>Working Press.</i>	P2	Contaminazione - Contamination		Filtro - Filter $\beta_x = 75$
		NAS 1638	ISO 4406	
≤ 200 bar		12	21/18	40 μm
≥ 200 bar		11	20/17	25 μm

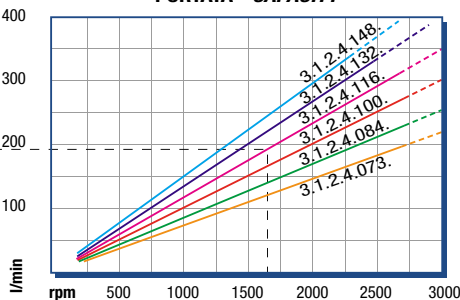
◀ **FILTRAZIONE CONSIGLIATA (ritorno o mandata)**
RECOMMENDED FILTERING (return or outlet)

TIPO - TYPE				XP 73X	XP 84X	XP 100X	XP 116X	XP 132X	XP 148X	
Cilindrata <i>Displacement</i>	Vg	cm ³ /n	cm ³ /rev.	73	84	100	116	132	148	
Pressione massima continua <i>Max continuous operating pressure</i>	P1	bar		290	270	260	250	230	190	
Pressione massima intermittente <i>Max intermitt. operating pressure</i>	(max 30 s)			P2	320	310	290	280	270	230
Pressione massima di picco <i>Max peak pressure</i>	(≤ 0.1 s)			P3	450	375	375	340	315	270
Velocità massima intermittente <i>Max intermittent speed</i>	(P ≤ 20 bar)	n3	n/min r.p.m.	3800	3500	3500	3000	3000	3000	
Velocità massima continua <i>Max continuous speed</i>	(≤ P1)	n1		2700	2700	2700	2700	2700	2700	
Velocità minima intermittente <i>Min intermittent speed</i>	(≤ P2 x 0.5) (max 30 s)	n4		350	350	300	300	300	300	

POTENZA ASSORBITA - ABSORBED POWER



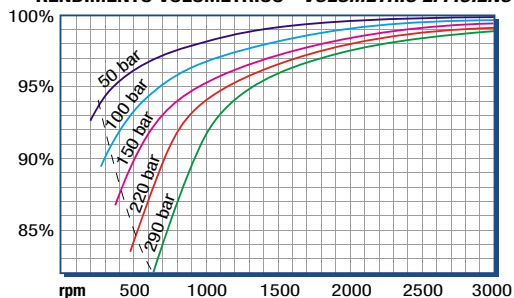
PORTATA - CAPACITY



RILIEVI ESEGUITI CON OLIO
ISO VG 46 A 50° C ($\nu=30$ cSt)
THE ABOVE SPECIFICATIONS
REFER TO OIL TYPE ISO
VG 46 AT 50° C ($\nu=30$ cSt)

DIAGRAMMI - DIAGRAMS

RENDIMENTO VOLUMETRICO - VOLUMETRIC EFFICIENCY



COPPIA ASSORBITA - INPUT TORQUE

