



SERIE XF

3.1.1.8.

Pompa ad Ingranaggi Gear Pump

CODICE DI ORDINAZIONE - DECODING

3.1.1.8 . PXX . X . 0 . 6 . 0

DIN
5 4 8 2

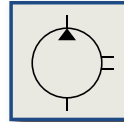
XF 11
XF 15
XF 15L
XF 25
XF 40

ALLESTIMENTI SPECIALI/SPECIAL OPTIONS
0 = NON RICHIESTO/STANDARD OPTION
L = VERSIONE ASPIRAZIONE LATERALE
SIDE INLET VERSION

ROTAZIONE/ROTATION
1 = SINISTRO/ANTICLOCKWISE
2 = DESTRO/CLOCKWISE

CILINDRATA/DISPLACEMENT

CODICE BASE/BASIC CODE

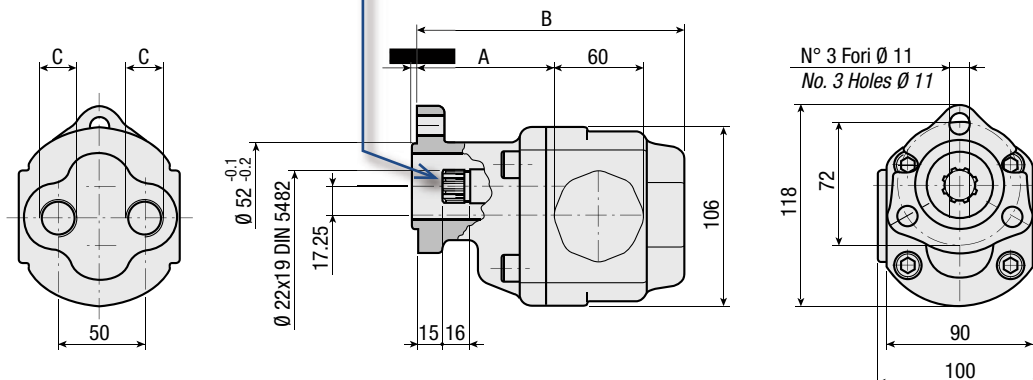


CARATTERISTICHE E DATI TECNICI - SPECIFICATIONS AND TECHNICAL DATA

TIPO TYPE	CODICE CODE	CILINDRATA DISPLACEMENT cm ³ /rev.	A mm	B mm	C		PESO WEIGHT kg
					ASPIRAZIONE INLET	MANDATA OUTLET	
XF 11	3.1.1.8.P11.X.0.6.0	11.3	80	139	3/4" G	3/4" G	5.2
XF 15	3.1.1.8.P15.X.0.6.0	15.5	82	143	3/4" G	3/4" G	5.4
XF 15L	3.1.1.8.P15.X.0.6.L	15.5	82	143	3/4" G	3/4" G	5.4
XF 25	3.1.1.8.P25.X.0.6.0	26.1	86	158	3/4" G	3/4" G	6.1
XF 40	3.1.1.8.P40.X.0.6.0	38.8	88	176	3/4" G	3/4" G	6.8

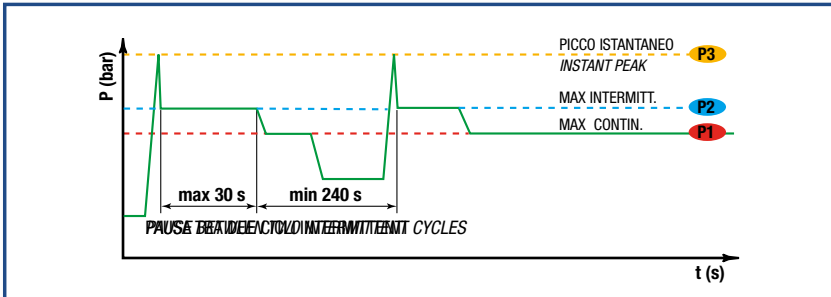
KIT ACCOPPIAMENTO
REAR MOUNTING KIT

2.05.P604.0000



DATI TECNICI - TECHNICAL DATA

ESEMPIO CICLI LAVORO - EXAMPLE OF WORKING CYCLES



Pressione d'aspirazione: <i>Inlet pressure:</i>	0.7 ÷ 1.5 bar (assoluti/absolute)
Campo viscosità lavoro: <i>Operating viscosity range:</i>	12 ÷ 100 cSt
Temperatura fluido °C (t): <i>Fluid temperature °C (t):</i>	-10° + 80° C

Pressione Lavoro <i>Working Press.</i>	P2	Contaminazione - Contamination		Filtro - Filter $\beta_x = 75$
		NAS 1638	ISO 4406	
≤ 200 bar		12	21/18	40 μm
≥ 200 bar		11	20/17	25 μm

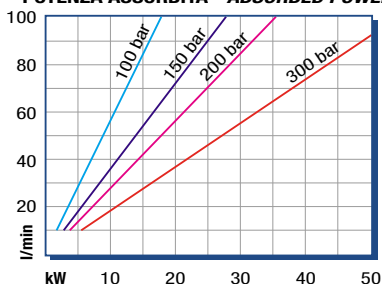
◀ **FILTRAZIONE CONSIGLIATA (ritorno o mandata)**
RECOMMENDED FILTERING (return or outlet)

TIPO - TYPE			XF 11	XF 15	XF 25	XF 40	
Cilindrata <i>Displacement</i>	Vg	cm ³ /n cm ³ /rev.	11.3	15.5	26.1	38.8	
Pressione massima continua <i>Max continuous operating pressure</i>	P1	bar	300	250	200	150	
Pressione massima intermittente <i>Max intermitt. operating pressure</i>	(max 30 s)		P2	330	300	230	180
Pressione massima di picco <i>Max peak pressure</i>	(≤ 0.1 s)		P3	400	375	300	250
Velocità massima intermittente <i>Max intermittent speed</i>	(P ≤ 20 bar)	n3	n/min r.p.m.	3500	3500	3000	2500
Velocità massima continua <i>Max continuous speed</i>	(≤ P1)	n1		2800	2500	2000	1700
Velocità minima intermittente <i>Min intermittent speed</i>	(≤ P2 x 0.5) (max 30 s)	n4		750	450	450	450

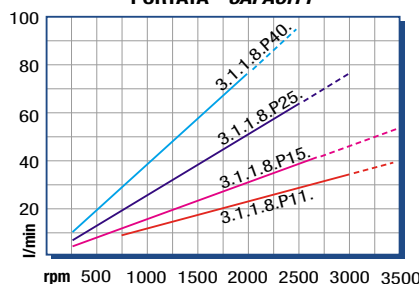
SERIE XF 3.1.1.8.

POMPE AD INGRANAGGI GEAR PUMPS

POTENZA ASSORBITA - ABSORBED POWER



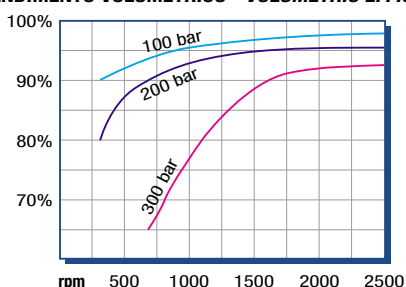
PORTATA - CAPACITY



RILIEVI ESEGUITI CON OLIO
ISO VG 46 A 50° C ($\nu=30$ cSt)
THE ABOVE SPECIFICATIONS
REFER TO OIL TYPE ISO
VG 46 AT 50° C ($\nu=30$ cSt)

DIAGRAMMI - DIAGRAMS

RENDIMENTO VOLUMETRICO - VOLUMETRIC EFFICIENCY



COPPIA ASSORBITA - INPUT TORQUE

