



# SERIE XPA-H 3.1.2.5.

CODICE DI ORDINAZIONE - *DECODING*

3.1.2.5 . XXX . X . 0 . 0 . 0

**DIN**  
5 4 8 2

XPA-H 10

XPA-H 15

XPA-H 25

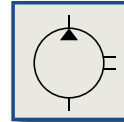
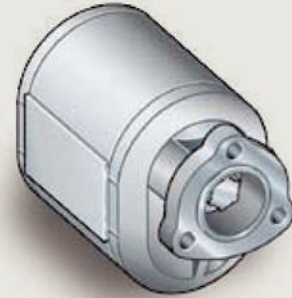
ALLESTIMENTI SPECIALI/SPECIAL OPTIONS  
0 = SENZA VALVOLA ELETTRICA/WITHOUT ELECTRIC VALVE

ROTAZIONE/ROTATION  
1 = SINISTRO/ANTICLOCKWISE  
2 = DESTRO/CLOCKWISE

CILINDRATA/DISPLACEMENT

CODICE BASE/BASIC CODE

## Pompa ad Ingranaggi Gear Pump

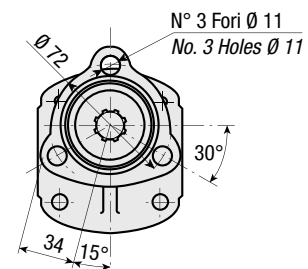
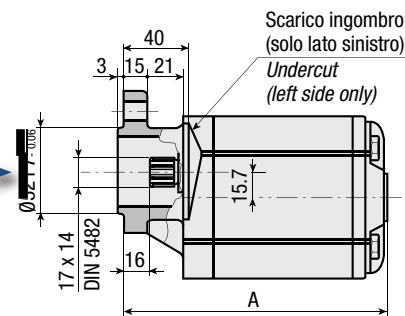
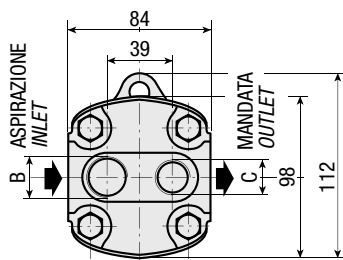


### CARATTERISTICHE E DATI TECNICI - SPECIFICATIONS AND TECHNICAL DATA

TIPO TYPE	CODICE CODE	CILINDRATA DISPLACEMENT cm <sup>3</sup> /rev.	A mm	B ASPIRAZIONE INLET	C MANDATA OUTLET	PESO WEIGHT kg
XPA-H 10	3.1.2.5.010.X.0.0.0	10	139	3/4" G	1/2" G	2.7
XPA-H 15	3.1.2.5.015.X.0.0.0	15	148	3/4" G	1/2" G	3.0
XPA-H 25	3.1.2.5.025.X.0.0.0	25	164.5	3/4" G	1/2" G	3.2

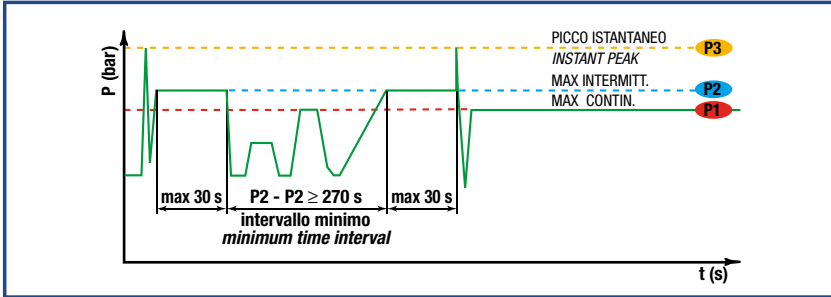
**KIT DI MONTAGGIO  
MOUNTING KIT**

2.05.P486.0000



**DATI TECNICI - TECHNICAL DATA**

**ESEMPIO CICLI LAVORO - EXAMPLE OF WORKING CYCLES**



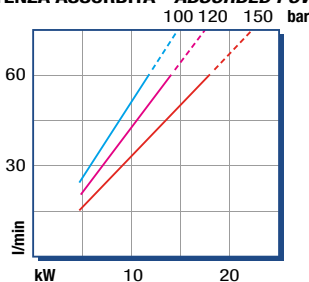
Pressione d'aspirazione: <i>Inlet pressure:</i>	0.7 ÷ 1.5 bar (assoluti/absolute)
Campo viscosità lavoro: <i>Operating viscosity range:</i>	12 ÷ 100 cSt
Temperatura fluido °C (t): <i>Fluid temperature °C (t):</i>	-10° + 80° C

Pressione Lavoro <i>Working Press.</i>	P2	Contaminazione - <i>Contamination</i>		Filtro - <i>Filter</i> βx = 75
		NAS 1638	ISO 4406	
≤ 200 bar		12	21/18	40 μm

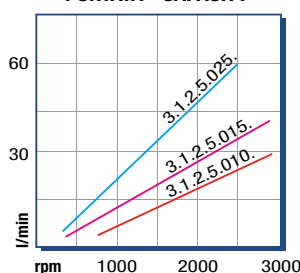
◀ **FILTRAZIONE CONSIGLIATA** (ritorno o mandata)  
**RECOMMENDED FILTERING** (return or outlet)

TIPO - TYPE			XPA-H 10	XPA-H 15	XPA-H 25
Cilindrata <i>Displacement</i>	Vg	cm <sup>3</sup> /n cm <sup>3</sup> /rev.	10	15	25
Pressione massima continua <i>Max continuous operating pressure</i>	P1	bar	190	150	120
Pressione massima intermittente <i>Max intermitt. operating pressure</i>	(max 30 s) P2		220	170	150
Pressione massima di picco <i>Max peak pressure</i>	(≤ 0.1 s) P3		270	210	180
Velocità massima intermittente <i>Max intermittent speed</i>	(P ≤ 20 bar) n3	n/min r.p.m.	3000	3000	2500
Velocità massima continua <i>Max continuous speed</i>	(≤ P1) n1		1500	1500	1500
Velocità minima intermittente <i>Min intermittent speed</i>	(≤ P2 x 0.5) (max 30 s) n4		800	650	650

**POTENZA ASSORBITA - ABSORBED POWER**



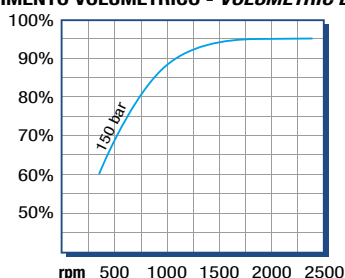
**PORTATA - CAPACITY**



RILIEVI ESEGUITI CON OLIO  
ISO VG 46 A 50° C (ν=30 cSt)  
THE ABOVE SPECIFICATIONS  
REFER TO OIL TYPE ISO  
VG 46 AT 50° C (ν=30 cSt)

**DIAGRAMMI - DIAGRAMS**

**RENDIMENTO VOLUMETRICO - VOLUMETRIC EFFICIENCY**



**COPPIA ASSORBITA - INPUT TORQUE**

