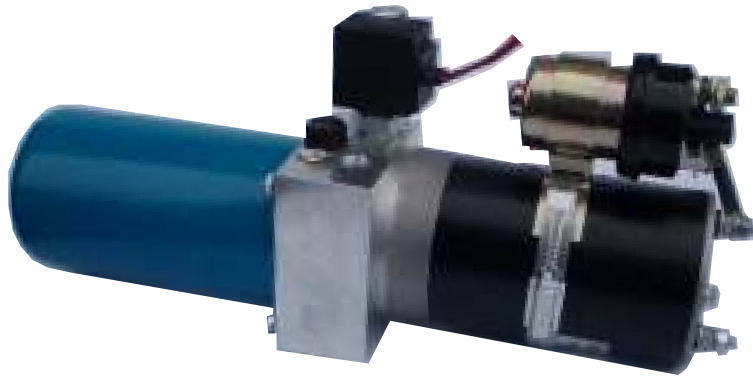


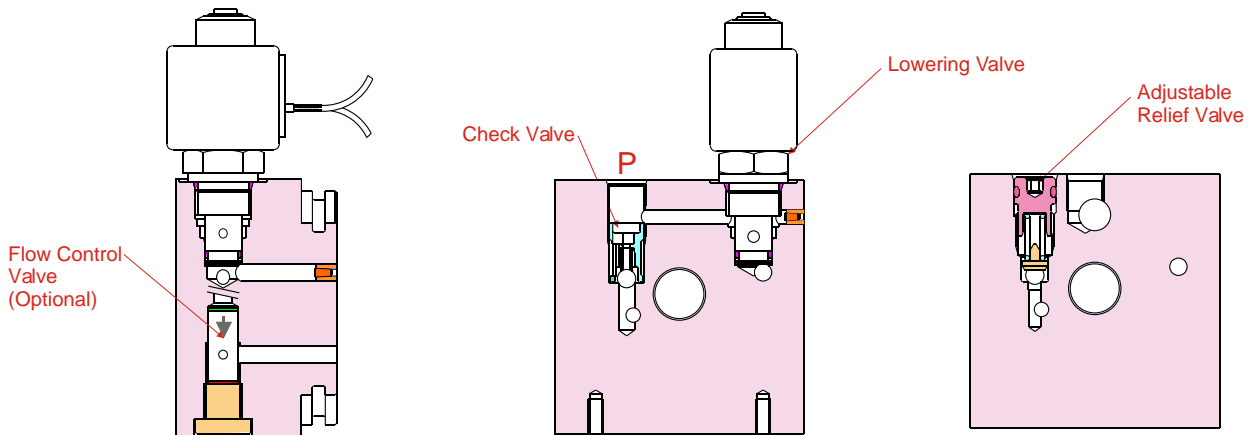
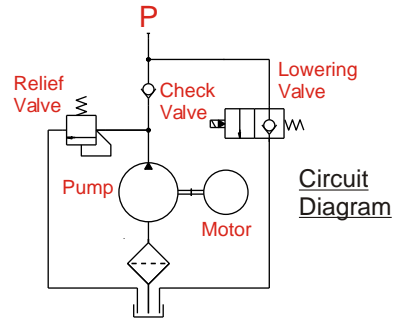
500W & 800W DC UNIPACKS



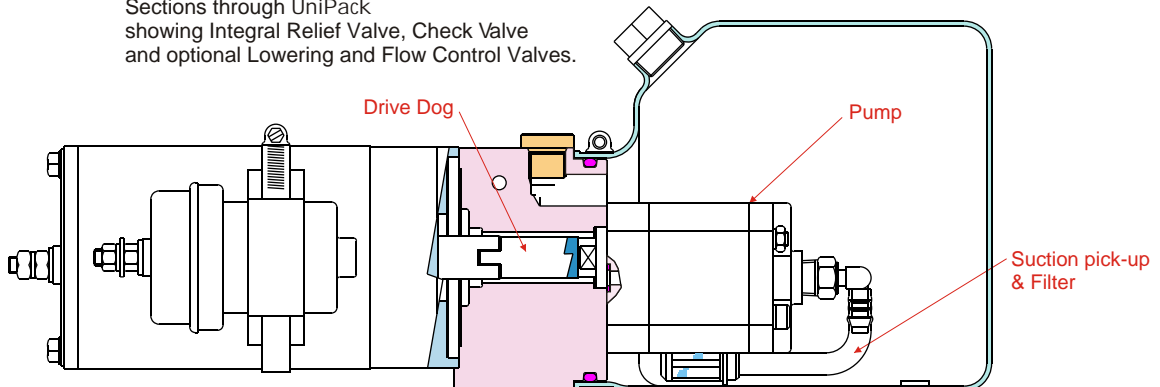
Versatile range of micro power units for mobile applications.
 Flows to 3,6l/min; Pressures to 180bar
 Motors 150W, 200W, 500W & 800W dc
 or 200W ac
 Pump sizes 0,25, 0,50, 0,75 & 1cc/rev

FEATURES

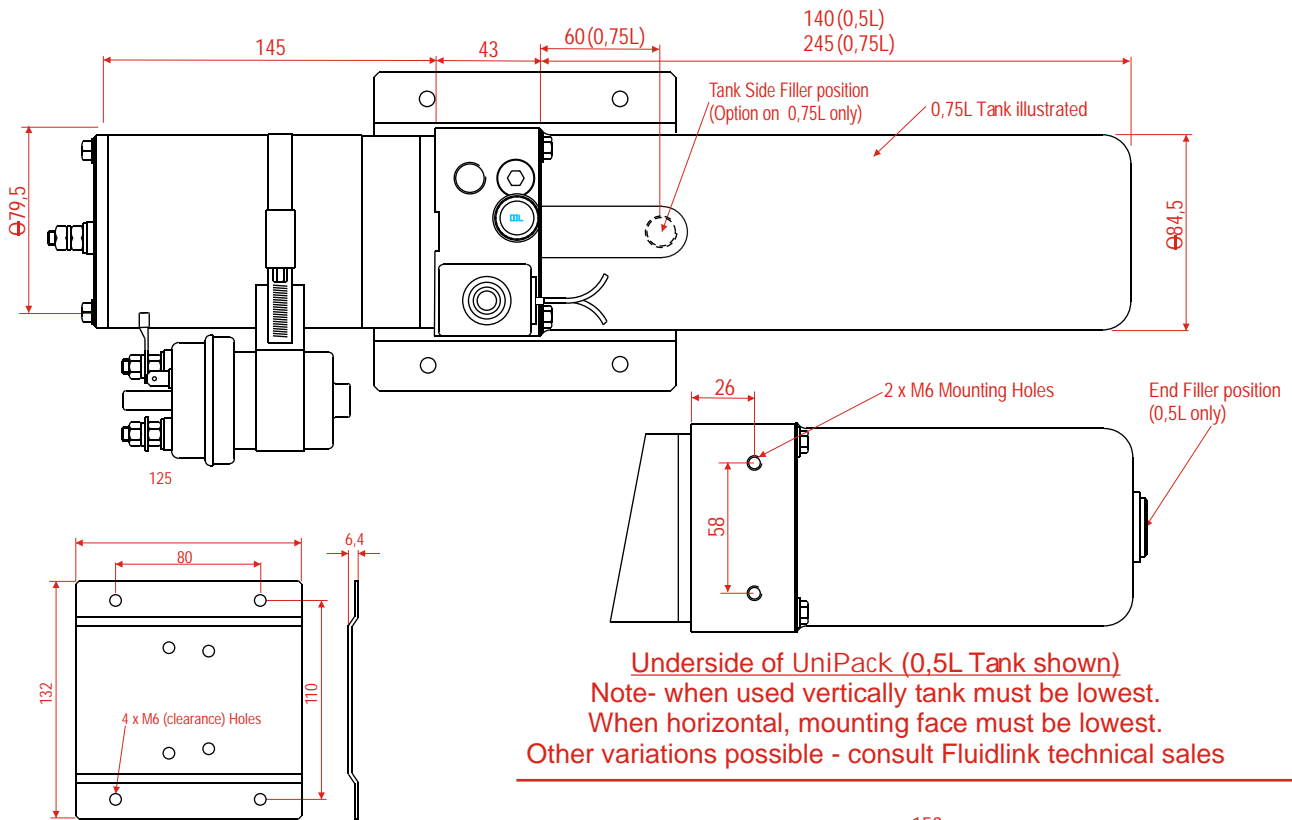
- Pressure balanced gear pumps
- Ultra-compact design
- Quiet operation with long life
- Easy to install with integral mounting points
- Wide range of options
- Customised OEM versions available
- Global support & servicing



Sections through UniPack showing Integral Relief Valve, Check Valve and optional Lowering and Flow Control Valves.

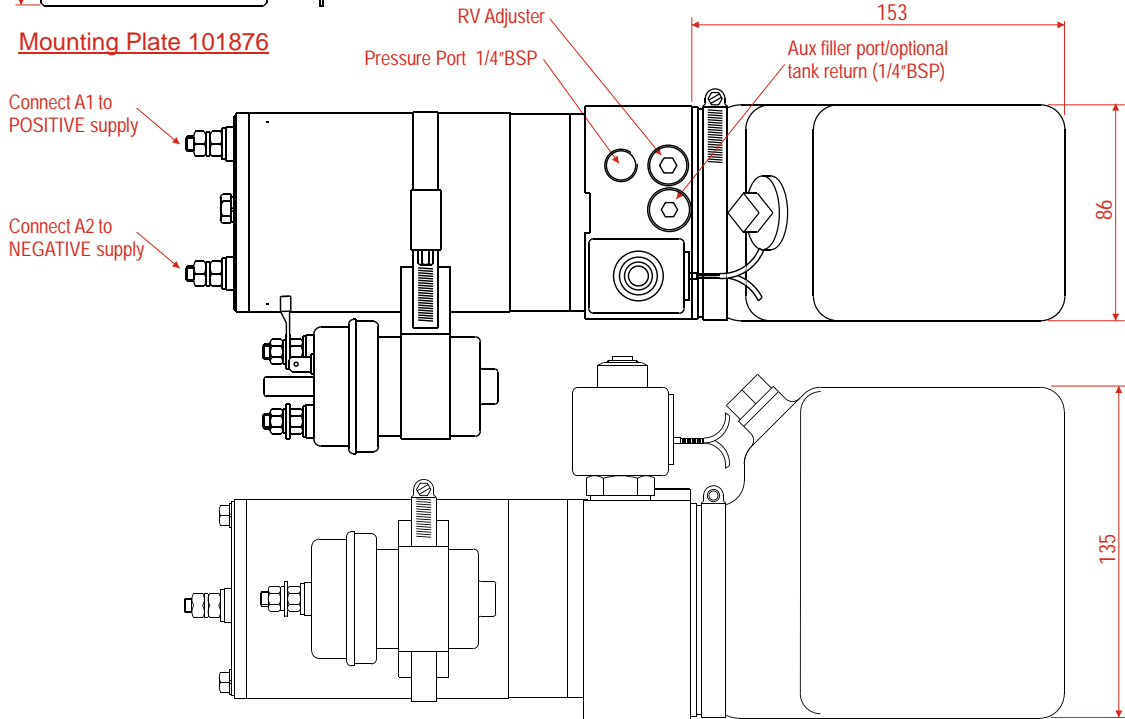


500/800W DC UNIPACKS



Underside of UniPack (0,5L Tank shown)
 Note- when used vertically tank must be lowest.
 When horizontal, mounting face must be lowest.
 Other variations possible - consult Fluidlink technical sales

Mounting Plate 101876



UniPack ,with 1,0L Tank

PERFORMANCE DATA 500/800W UNIPACKS

Nominal performance of pack combinations at constant voltage and at nominal 20°-25° C with ISO VG22 oil.

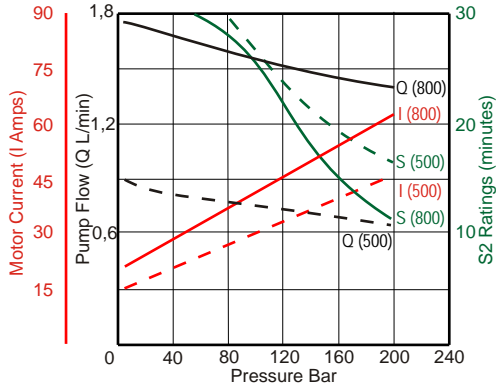
Key to diagrams:-

- (Black) Flow rate (Q) 800W motor
- (Black) Flow rate (Q) 500W motor
- (Red) Current (A) 800W motor
- (Red) Current (A) 500W motor
- (Green) S2 run time (S) 800W motor
- (Green) S2 run time (S) 500W motor

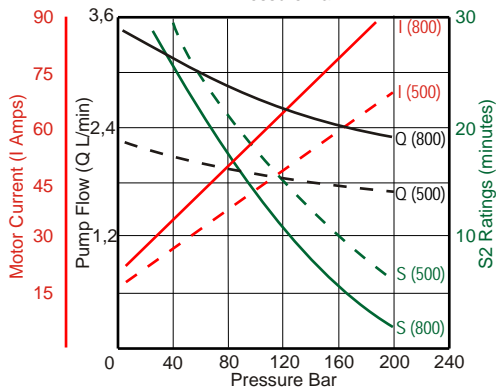
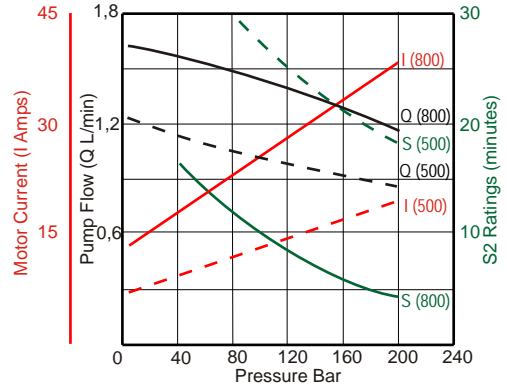
For information regarding S2 running time refer to p4

12V Motor

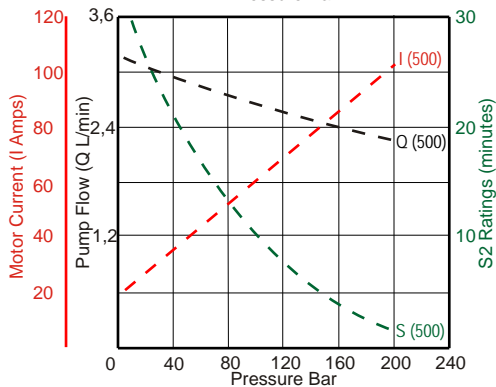
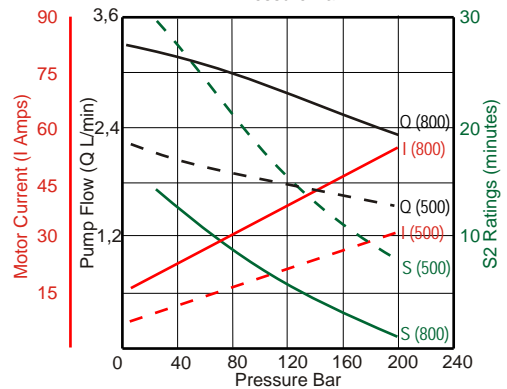
24V Motor



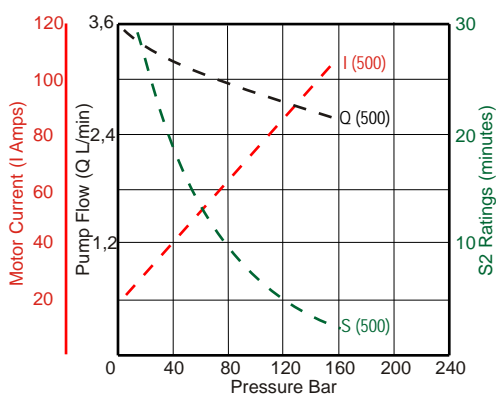
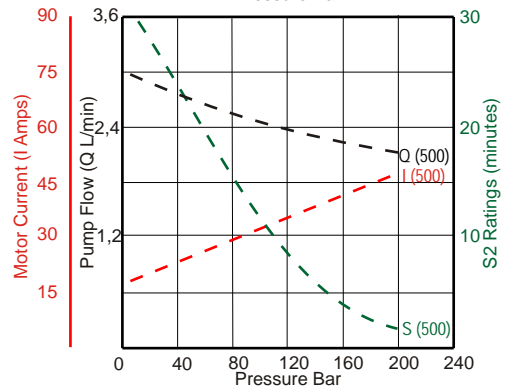
**Pump Size
0,25cc/rev**



**Pump Size
0,50cc/rev**



**Pump Size
0,75cc/rev
500W motor
only**



**Pump Size
1cc/rev
500W motor
only**

