

# M3551

## Double acting solenoid

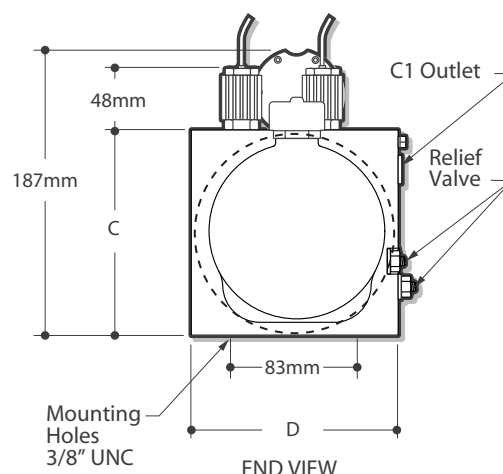
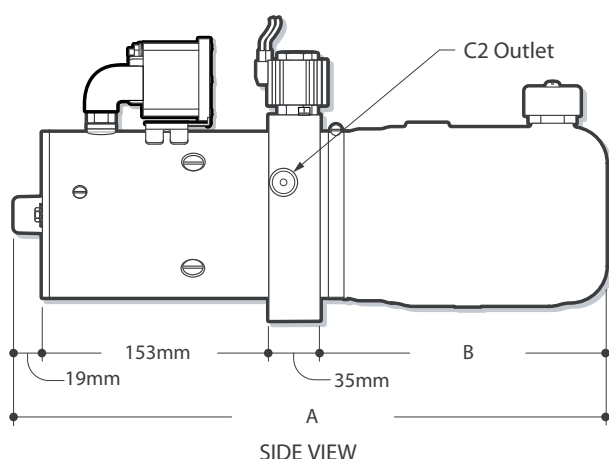
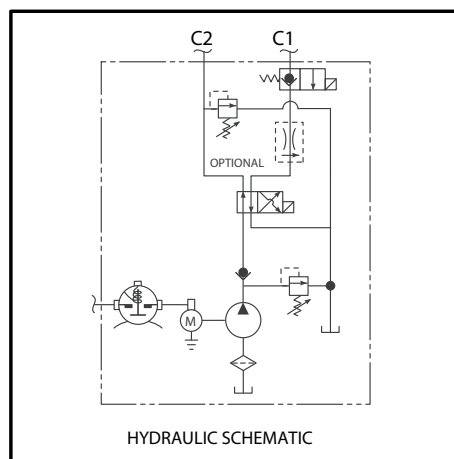
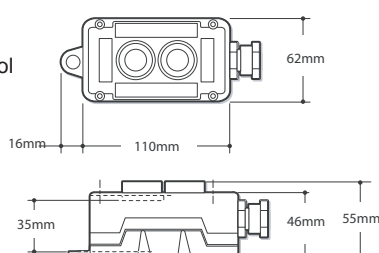
**Description:**

- Pump/Motor/Reservoir/Valve
- Check Valve
- Externally Adjustable Relief Valve
- 1 x 4-Way/2-Position and 1 x 2-Way/2-Position Normally Closed Solenoid Cartridge Valve Located in the Base
- C1 Port Positively Checked
- Externally Adjustable Relief Valve in C2 Port
- 9/16" UNO Ports
- Horizontal Mounting Standard

**Option:**

Push-button pendant control  
c/w 3 metres cable

**Model: 07995**



**ORDERING CODE: M3551.14157.12V**

12V or 24V DC

TANK	VOLUME litres	TYPE material / shape	A	B	C	D
			mm			
14157	3.2	Poly □	461	254	152	165
6148	3.8	Steel ○	486	279	159	153
14166	4.7	Poly □	486	279	184	170
6864	8.3	Steel □	658	451	159	184
6888	11.7	Steel □	811	604	159	184

Specifications subject to change without notice

04/08/2008



# M3515

## Double acting solenoid (open centre)

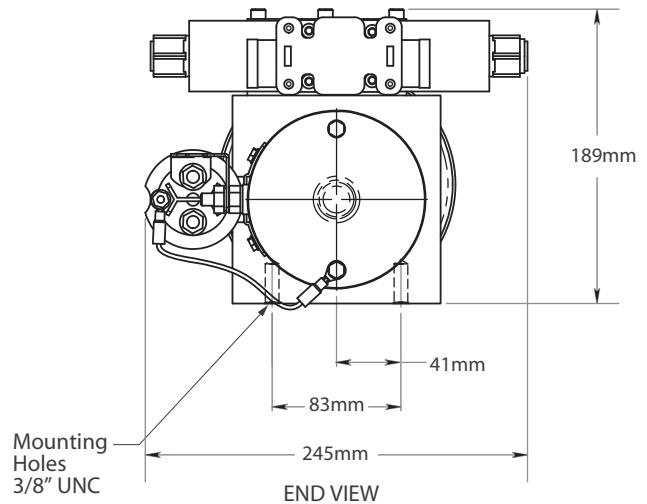
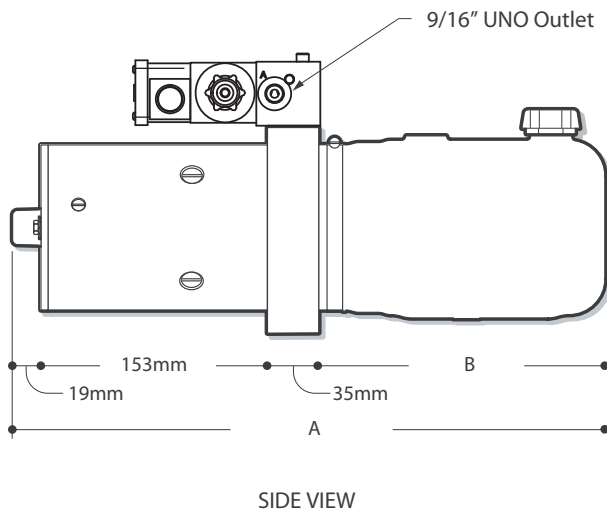
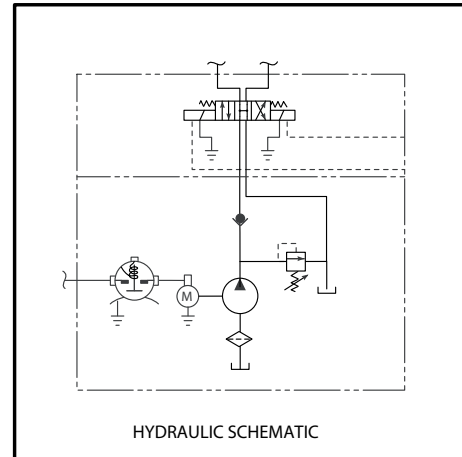
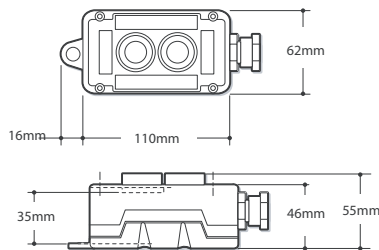
**Description:**

- Pump/Motor/Reservoir/Valve
- Check Valve in "P" Port
- Externally Adjustable Relief Valve
- D03 Solenoid Valve
- 9/16" UNO Outlets
- Horizontal Mounting Standard

**Option:**

Push-button pendant control  
c/w 3 metres cable

**Model: 07995**



**ORDERING CODE: M3515.14157.12V**

12V or 24V DC

TANK	VOLUME litres	TYPE material / shape	A	B		
			mm			
14157	3.2	Poly □	461	254		
6148	3.8	Steel ○	486	279		
14166	4.7	Poly □	486	279		
6864	8.3	Steel □	658	451		
6888	11.7	Steel □	811	604		

Specifications subject to change without notice

04/08/2008