

---

# **INTERMOT - ADVANCED - MOTORS**

## **IAM SERIES**

---

### **H1 MODEL**

---



Factory 19 / 5 Lyn Parade PRESTONS NSW 2170  
 Ph: (02) 9607 4100 Fax: (02) 9607 4200

**IAM 80-100-150-175  
 195-200-250-300 H1**

**IAM 100-150-175-195  
 200-250/BH H1**

**IAM 100-150-175-195  
 200-250/GM05 H1**

**IAM 100-150-175-195  
 200-250/GM1 H1**

**IAM 200-250-300/PH H1**

---

## **INDEX**

---

TECHNICAL DATA - - - - -	Pag. 16
IAM H1 80-100-150-175-195 - - - - -	" 17
IAM H1 200-250-300 - - - - -	" 18
IAM H1 100-150-175-195-200-250/GM05 - - - - -	" 19
IAM H1 100-150-175-195-200-250/BH - - - - -	" 20
IAM H1 100-150-175-195-200-250/GM1 - - - - -	" 21
IAM H1 200-250-300/PH - - - - -	" 22
ORDERING INSTRUCTIONS - - - - -	" 23
GRAPHIC PERFORMANCES H1 80-100-150-175 - - - - -	" 24
GRAPHIC PERFORMANCES H1 195-200-250-300 - - - - -	" 25

---

# TECHNICAL DATA

# H1

MODEL		IAM 80 H1	IAM 100 H1	IAM 150 H1	IAM 175 H1	IAM 195 H1	IAM 200 H1	IAM 250 H1	IAM 300 H1
Displacement	cc/rev	80	100	157	176	195	207	257	307
Specific Torque	Nm/bar	1.3	1.6	2.5	2.8	3.1	3.3	4.1	4.9
Max cont. Pressure	bar	250	250	250	250	250	250	250	250
Max int. Pressure	bar	300	300	300	300	300	300	300	300
Peak pressure	bar	350	350	350	350	350	350	350	350
Max continuous speed	rpm	950	950	950	800	800	750	750	750
Peak speed	rpm	1050	1050	1050	900	900	850	850	850
Max continuous power	HP	27	37	37	37	37	37	37	37
	kW	20	27	27	27	27	27	27	27
Max power	HP	54	54	54	54	54	54	54	54
	kW	40	40	40	40	40	40	40	40

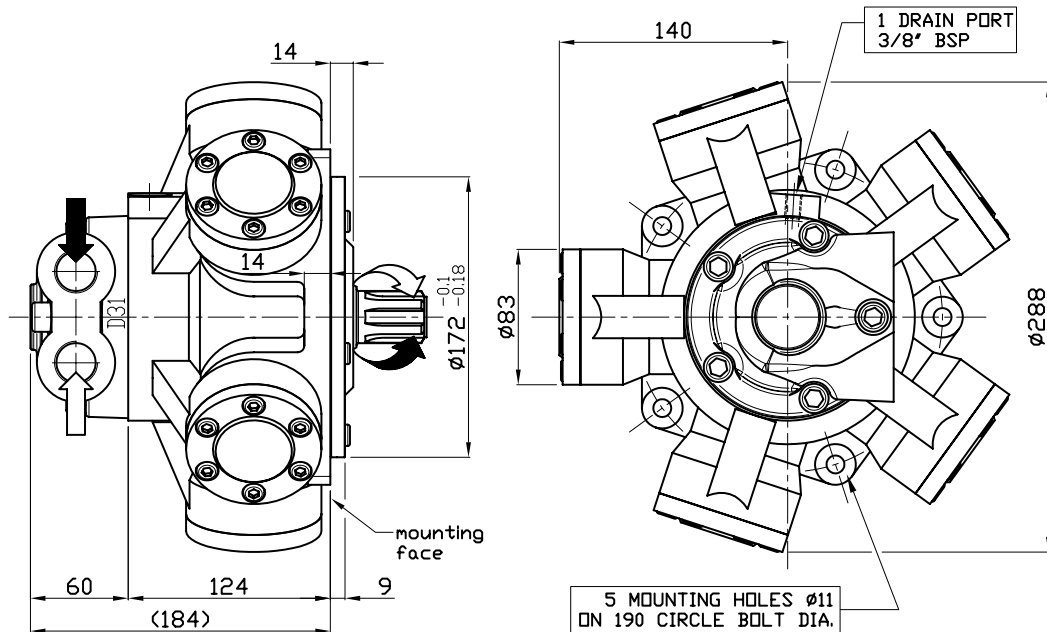
- N° of pistons: 5
- Max case pressure: 6 bar
- Max back pressure: 70 bar
- Dry weight: 26 kg
- Temperature range: -30°C ÷ +70°C
- Minimum speed: 2÷3 rpm
- Flushing flow<sup>(\*)</sup>:
 

IAM H1 80 – 100 – 150	5 l/min
IAM H1 175 – 195 – 200 – 250 – 300	6 l/min

(\*)for further details regarding flushing go to page 10 of this catalogue.

## SIZE

### IAM 80-100-150-175-195 H1



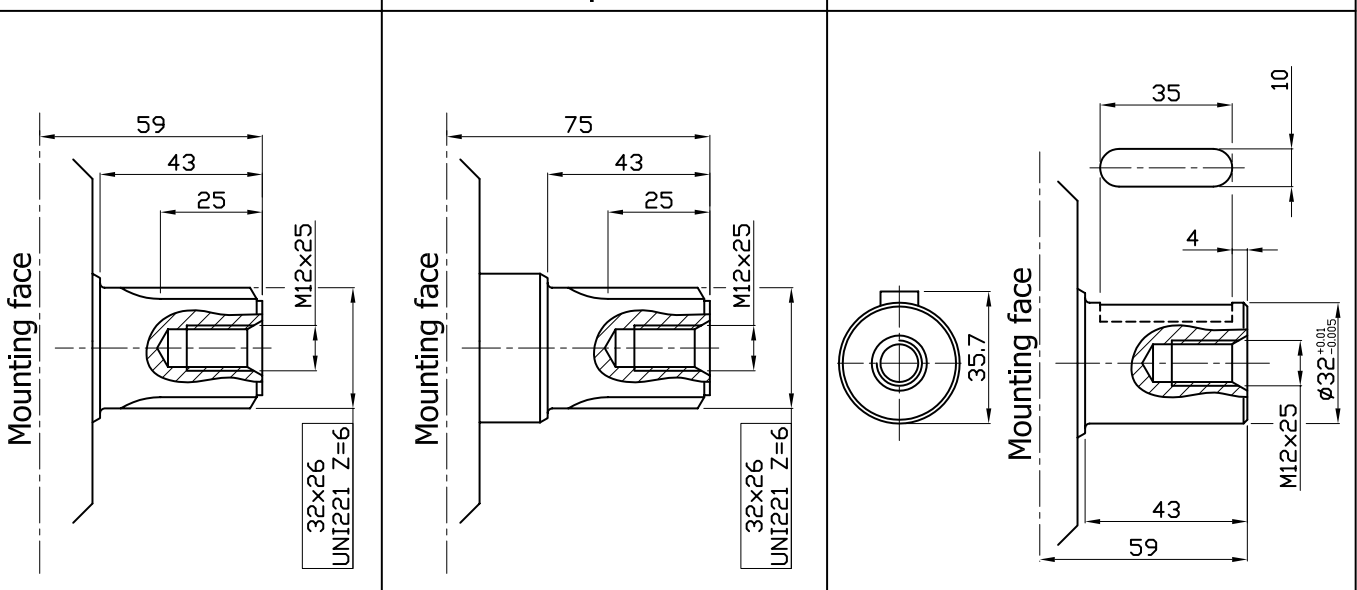
## SHAFT

### IAM 80-100-150-175-195 H1

A0: Standard splined shaft

A1: Splined shaft on request

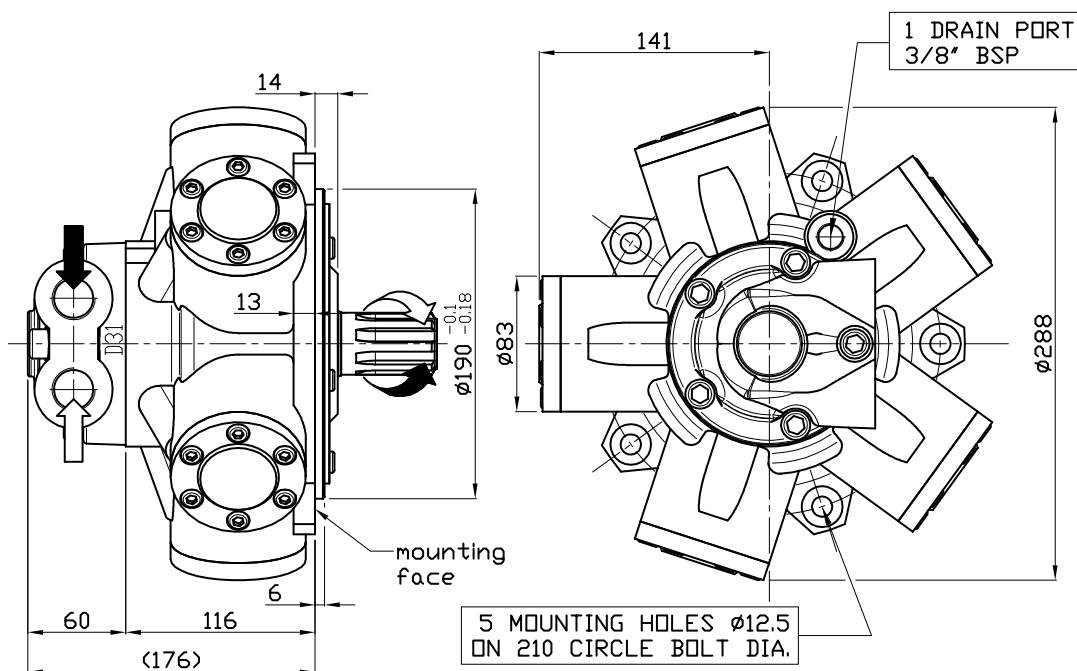
A2: Parallel shaft on request



FEMALE SHAFT AVAILABLE UPON REQUEST N35x2x30x16x9H DIN 5480 (100 and 150 cc/Rev only)

## SIZE

### IAM 200-250-300 H1

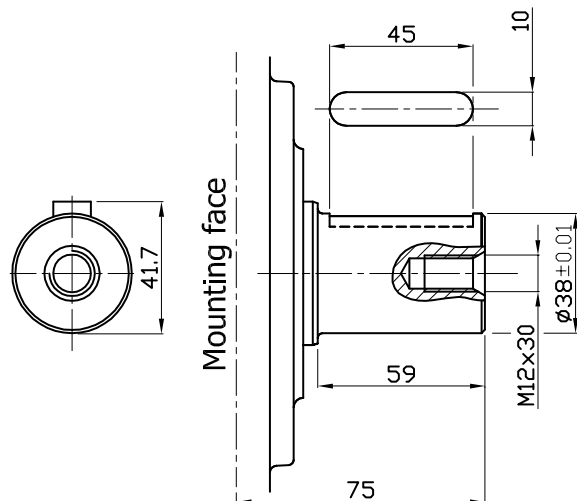
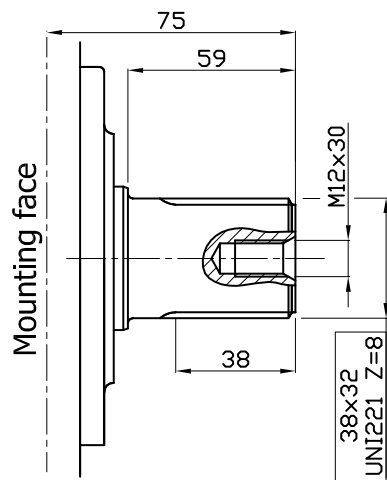


## SHAFT

### IAM 200-250-300 H1

A0: Standard splined shaft

A2: Parallel shaft on request

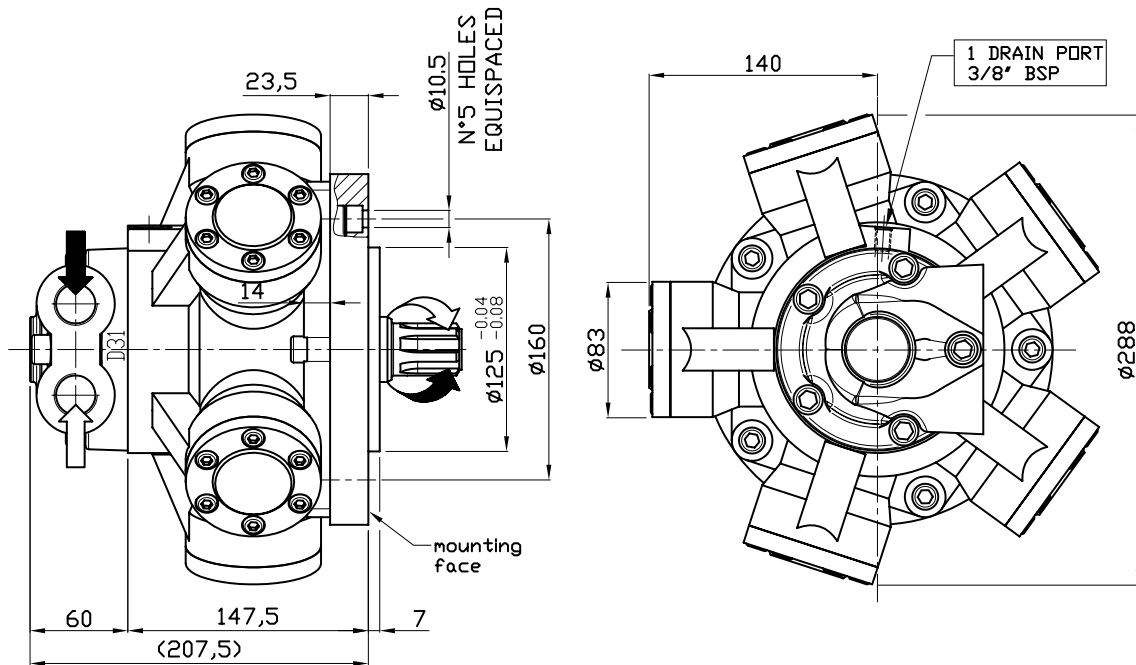


FEMALE SHAFT AVAILABLE UPON REQUEST N35x2x30x16x9H DIN 5480 (300 cc/Rev only)

INTERCHANGEABLE WITH GM05

## SIZE

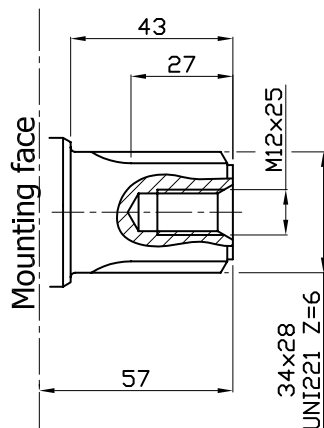
IAM 100/GM05 150/GM05 175/GM05 195/GM05 250/GM05 H1



## SHAFT

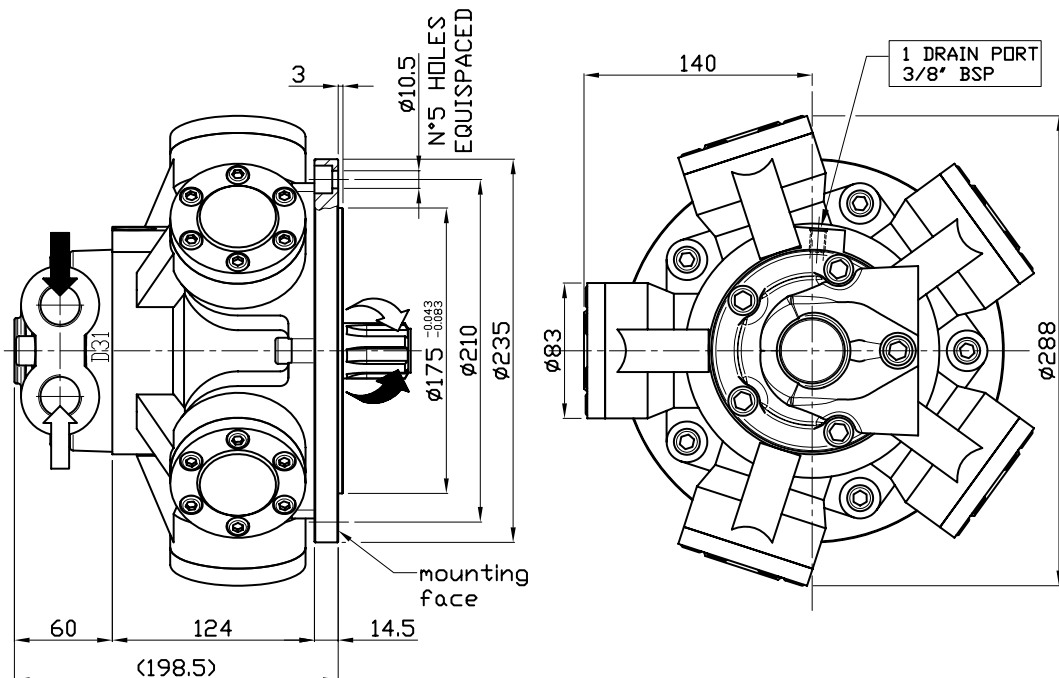
IAM 100/GM05 150/GM05 175/GM05 195/GM05 250/GM05 H1

A0: Standard splined shaft



## SIZE

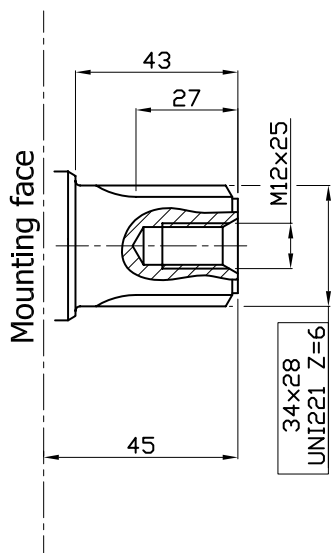
### IAM 100/BH-150/BH-175/BH-195/BH-250/BH H1



## SHAFT

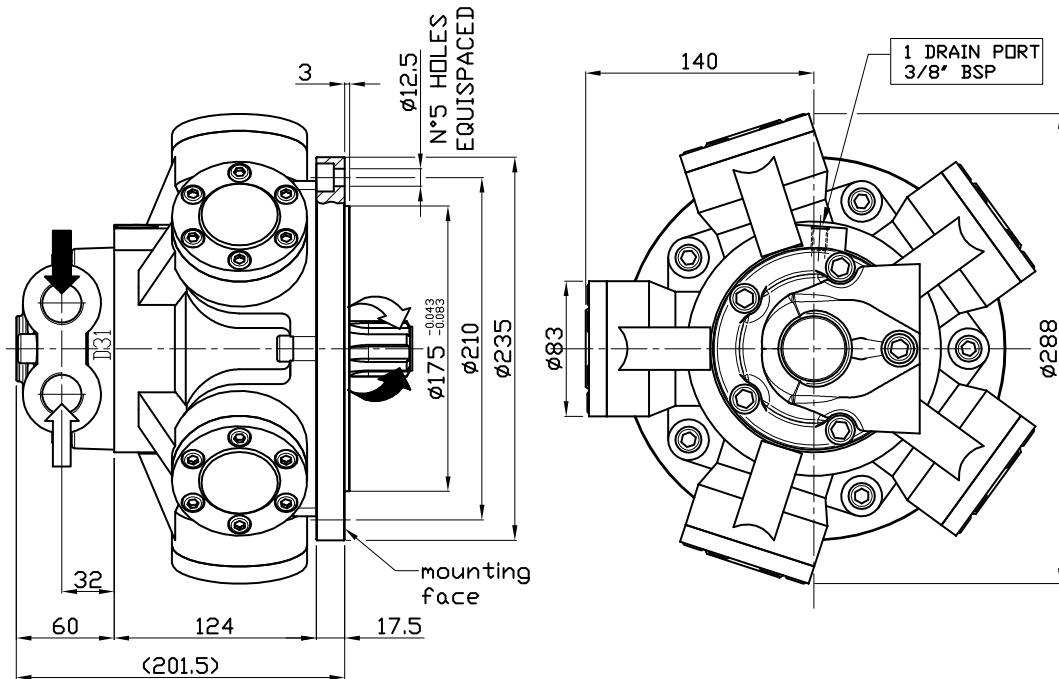
### IAM 100/BH-150/BH-175/BH-195/BH-250/BH H1

A0: Standard splined shaft



## SIZE

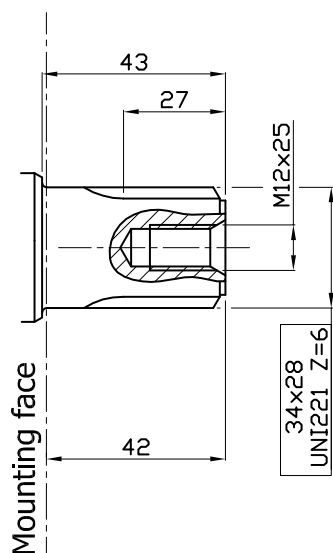
IAM 100/GM1-150/GM1-175/GM1-195/GM1-250/GM1 H1



## SHAFT

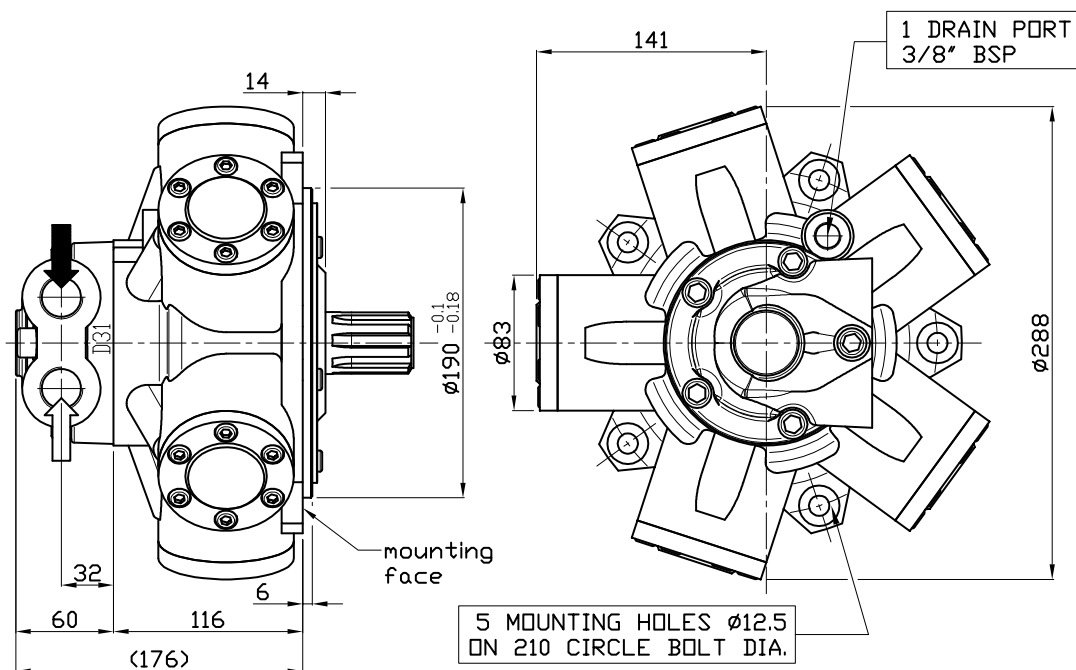
IAM 100/GM1-150/GM1-175/GM1-195/GM1-250/GM1 H1

A0: Standard splined shaft



## SIZE

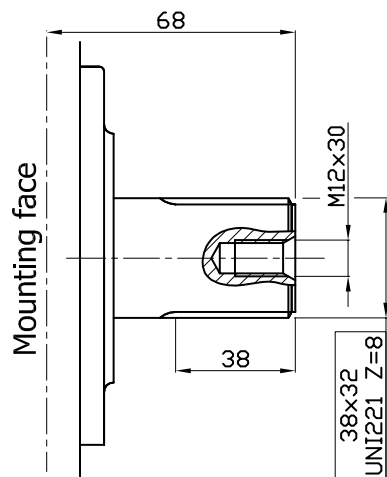
### IAM 200/PH-250/PH-300/PH H1



## SHAFT

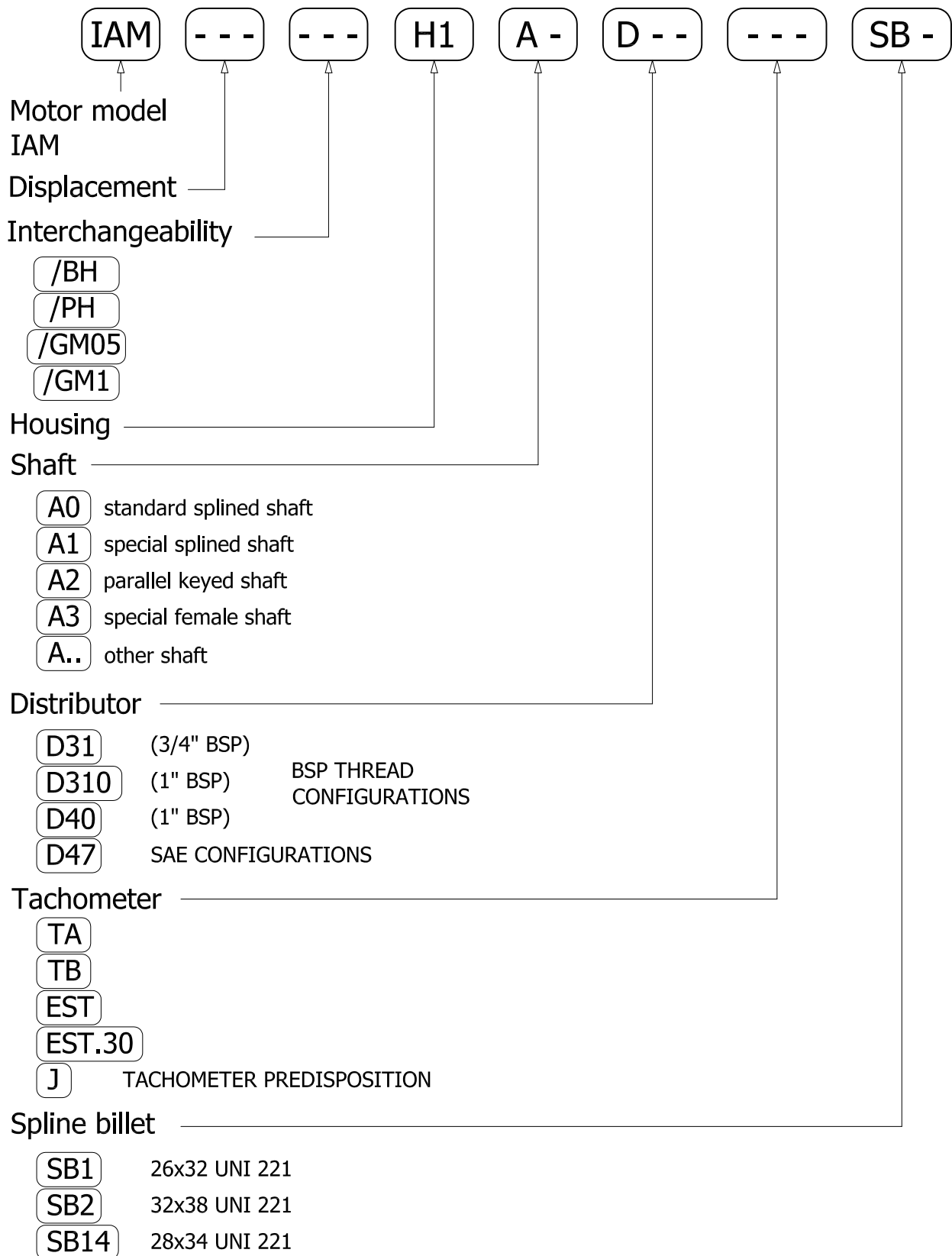
### IAM 200/PH-250/PH-300/PH H1

A0: Standard splined shaft

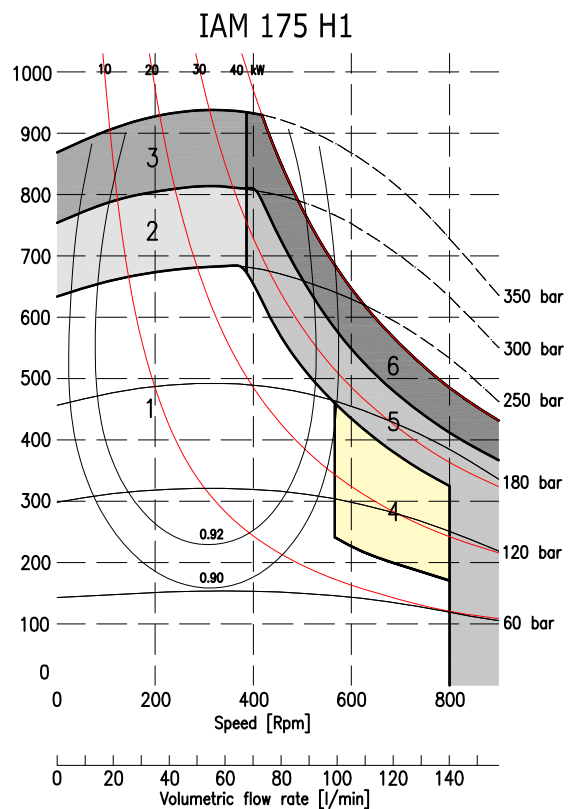
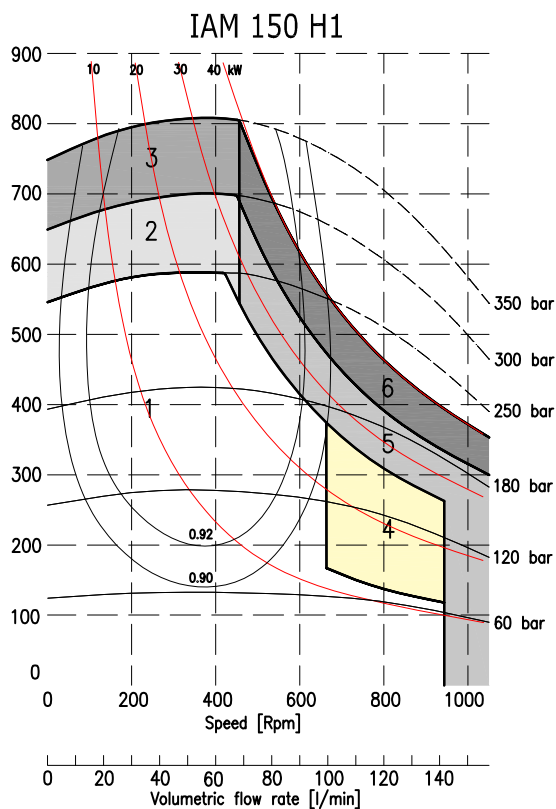
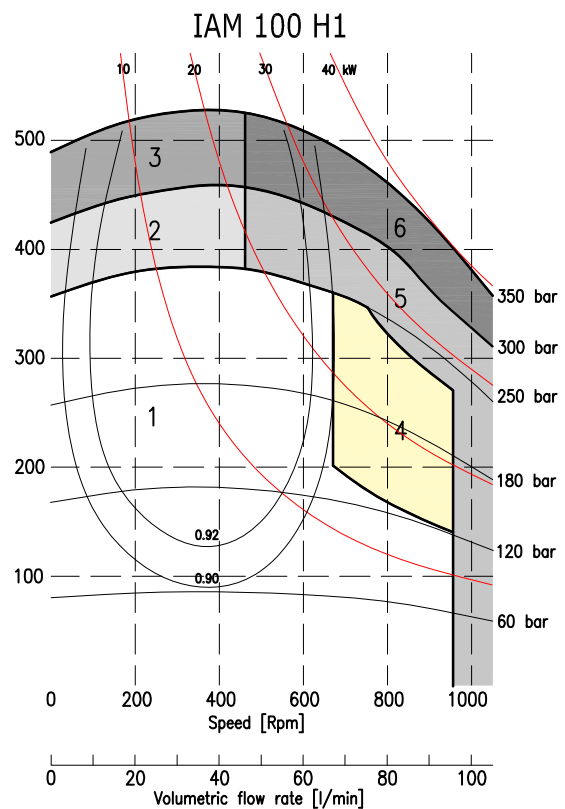
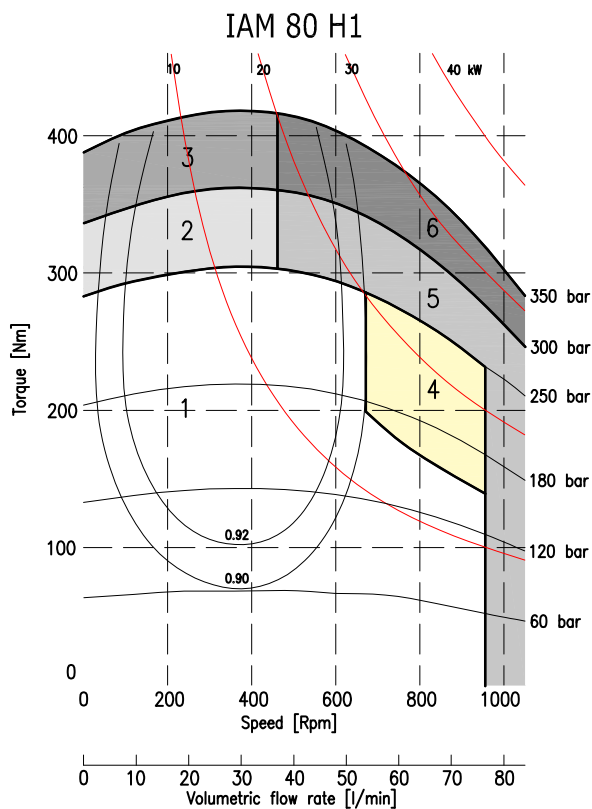




## ORDERING INSTRUCTIONS

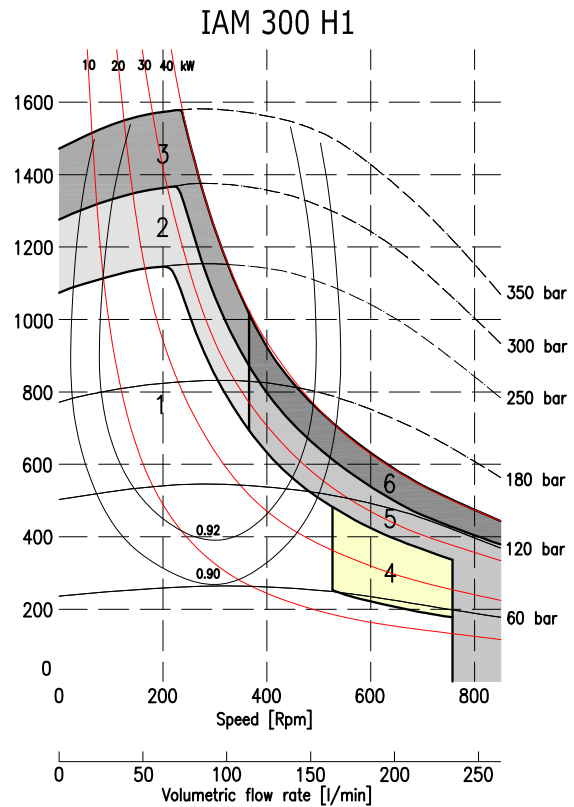
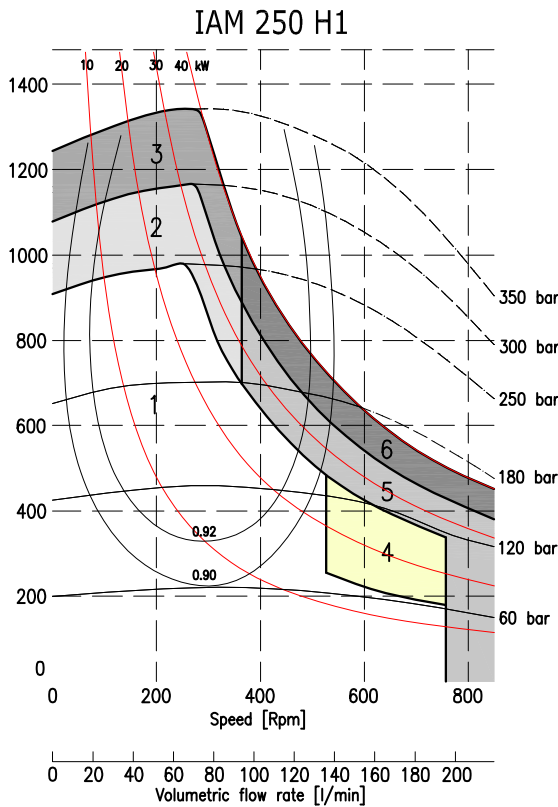
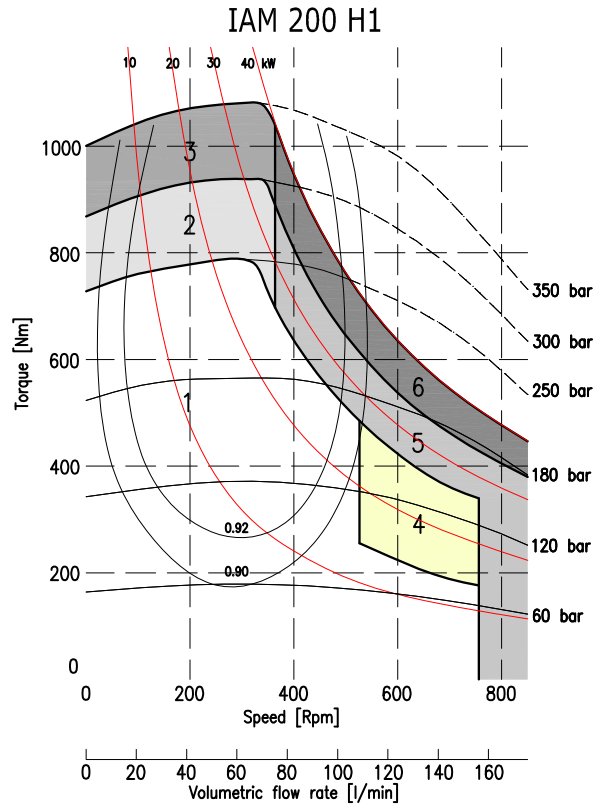
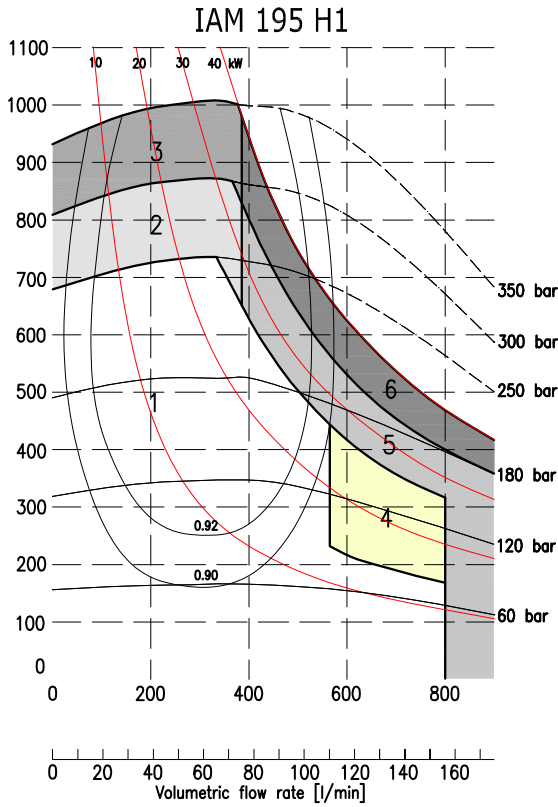


**EXAMPLE:** IAM.100/BH.H1.A0.D40.J.SB14  
IAM.250.H1.A0.D31.TA.SB2



1	Continuous operation
2	Intermittent operation for period 3-5 minutes every 10-15 minutes
3	Intermittent operation for very short period (3-5 seconds every 10-15 minutes)

4	Continuous operation with flushing
5	Intermittent operation for period 3-5 minutes every 10-15 minutes with flushing
6	Intermittent operation for very short period (3-5 seconds every 10-15 minutes) with flushing



1	Continuous operation
2	Intermittent operation for period 3-5 minutes every 10-15 minutes
3	Intermittent operation for very short period (3-5 seconds every 10-15 minutes)

4	Continuous operation with flushing
5	Intermittent operation for period 3-5 minutes every 10-15 minutes with flushing
6	Intermittent operation for very short period (3-5 seconds every 10-15 minutes) with flushing

---

# **INTERMOT - ADVANCED - MOTORS**

## **IAM SERIES**

---

### **H2 MODEL**

---



Factory 19 / 5 Lyn Parade PRESTONS NSW 2170  
 Ph: (02) 9607 4100 Fax: (02) 9607 4200

**IAM 200-250-300-350  
400-500-600 H2**

**IAM 190/C H2**

**IAM 300/C H2**

**IAM 200/B10 H2**

**IAM 200-250-300-350  
400-500-600/PH H2**

**IAM 200-250-300-350  
400-500-600/GM2 H2**

**IAM 200-250-300-350  
400-500-600/S H2**

---

## **INDEX**

TECHNICAL DATA - - - - -	Pag. 28
IAM H2 200-250-300-350 - - - - -	" 29
IAM H2 400-500-600 - - - - -	" 30
IAM H2 190/C - - - - -	" 31
IAM H2 300/C - - - - -	" 32
IAM H2 200/B10 - - - - -	" 33
IAM H2 200-250-300-350-400-500-600/PH - - - - -	" 34
IAM H2 200-250-300-350-400-500-600/GM2 - - - - -	" 35
IAM H2 200-250-300-350-400-500-600/S - - - - -	" 36
ORDERING INSTRUCTIONS - - - - -	" 37
GRAPHIC PERFORMANCES H2 200-250-300-350 - - - - -	" 38
GRAPHIC PERFORMANCES H2 400-500-600 - - - - -	" 39

---

# TECHNICAL DATA

# H2

MODEL		IAM 200 H2	IAM 250 H2	IAM 300 H2	IAM 350 H2	IAM 400 H2	IAM 500 H2	IAM 600 H2
Displacement	cc/rev	198	253	314	362	424	492	584
Specific Torque	Nm/bar	3.2	4.0	5.0	5.8	6.7	7.8	9.3
Max cont. Pressure	bar	250	250	250	250	250	250	250
Max int. Pressure	bar	300	300	300	300	300	300	300
Peak pressure	bar	350	350	350	350	350	350	350
Max continuous speed	rpm	800	750	750	650	600	500	500
Peak speed	rpm	900	850	850	750	700	600	600
Max continuous power	HP	45	45	45	45	45	45	45
	kW	33	33	33	33	33	33	33
Max power	HP	66	66	66	66	66	66	66
	kW	49	49	49	49	49	49	49

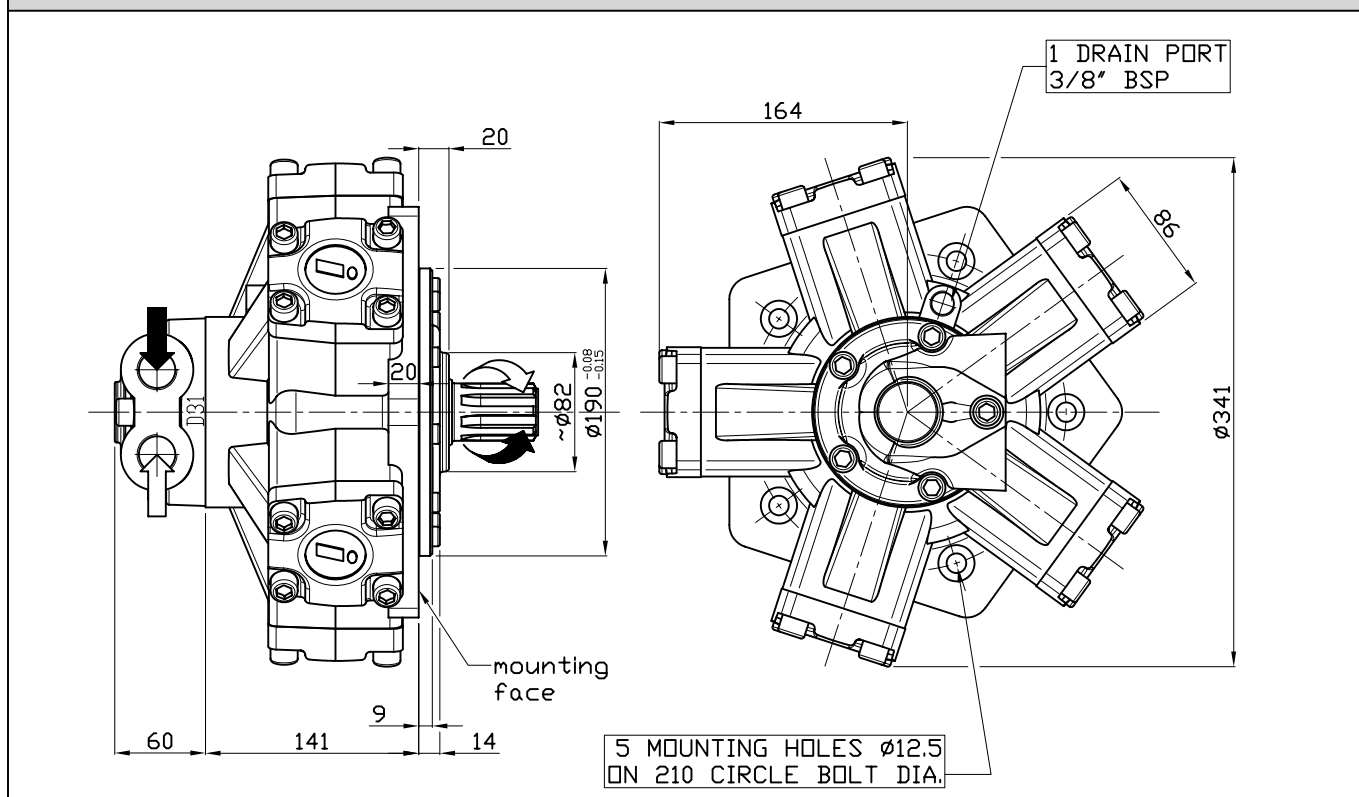
- N° of pistons: 5
- Max case pressure: 6 bar
- Max back pressure: 70 bar
- Dry weight: 42 kg
- Temperature range: -30°C ÷ +70°C
- Minimum speed: 2 rpm
- Flushing flow<sup>(\*)</sup>:
 

IAM H2 200 – 250 – 300	6 l/min
IAM H2 350 – 400 – 500	8 l/min
IAM H2 600	10 l/min

(\*)for further details regarding flushing go to page 10 of this catalogue.

## SIZE

### IAM 200-250-300-350 H2

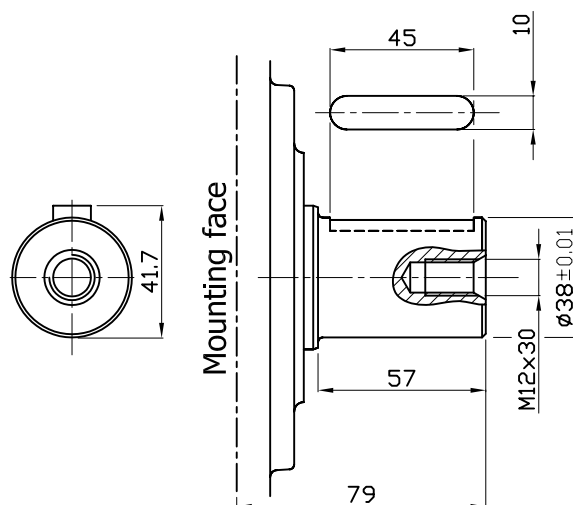
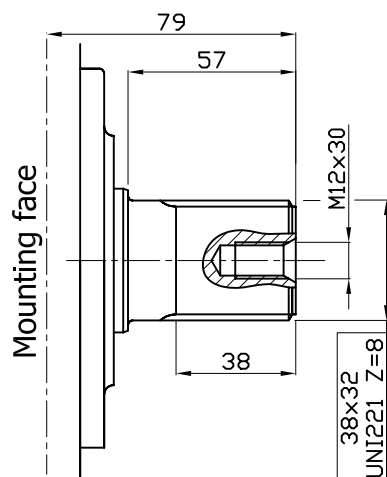


## SHAFT

### IAM 200-250-300-350 H2

A0: Standard splined shaft

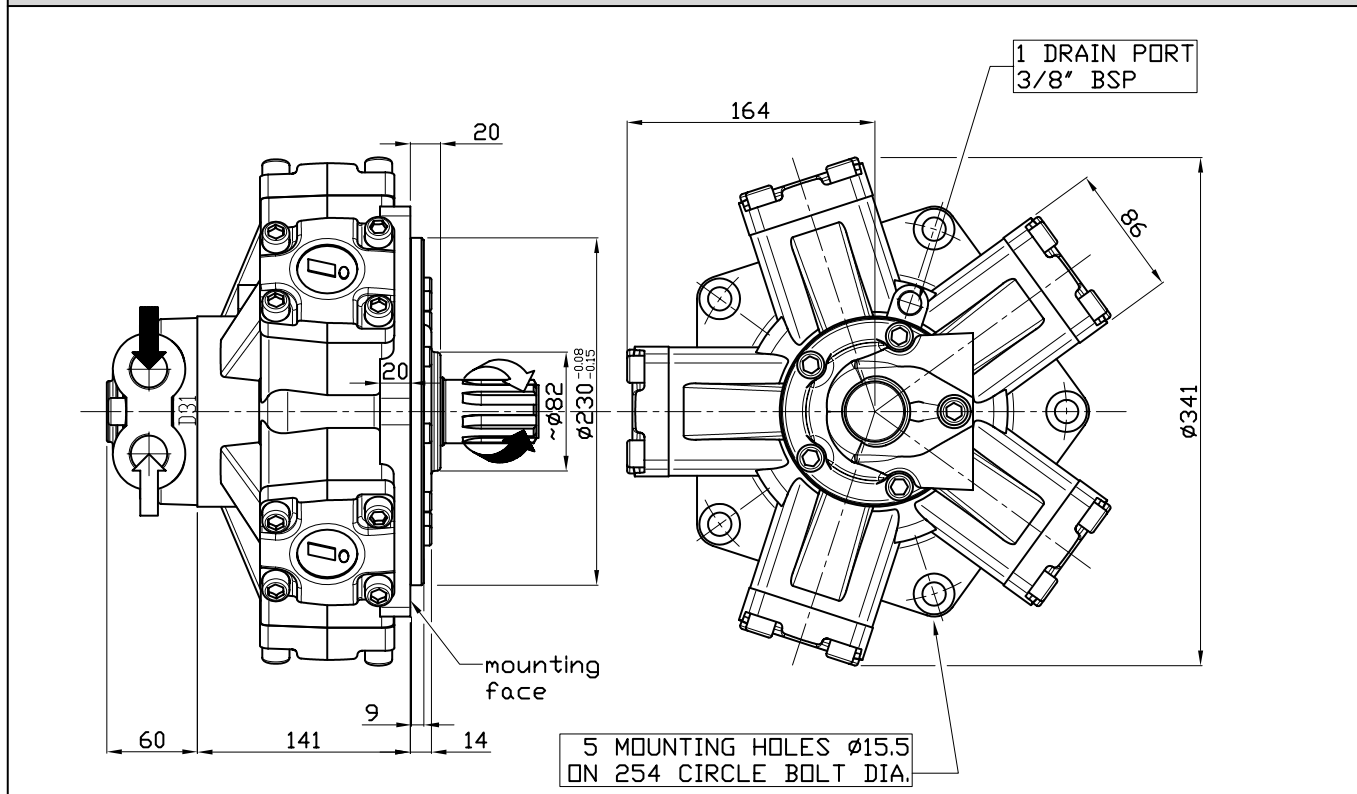
A2: Parallel shaft on request



ONLY FOR IAM 300 H2: FEMALE SHAFT AVAILABLE UPON REQUEST 40x3x12x9H DIN 5480

## SIZE

### IAM 400-500-600 H2

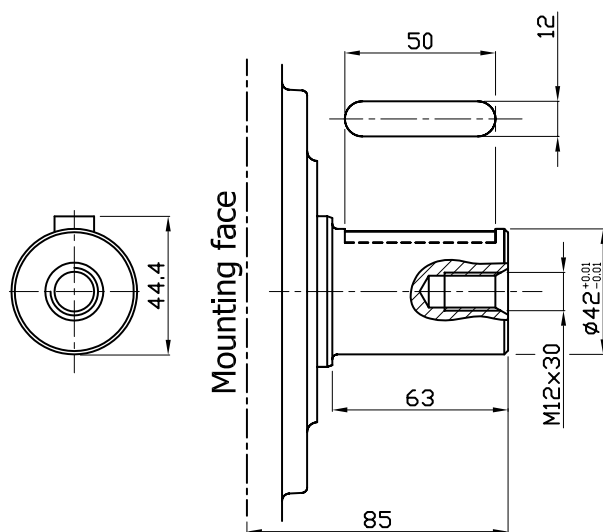
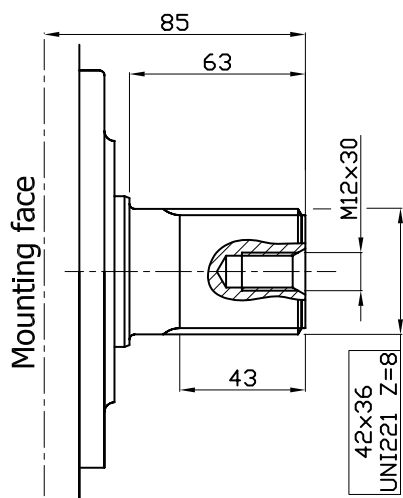


## SHAFT

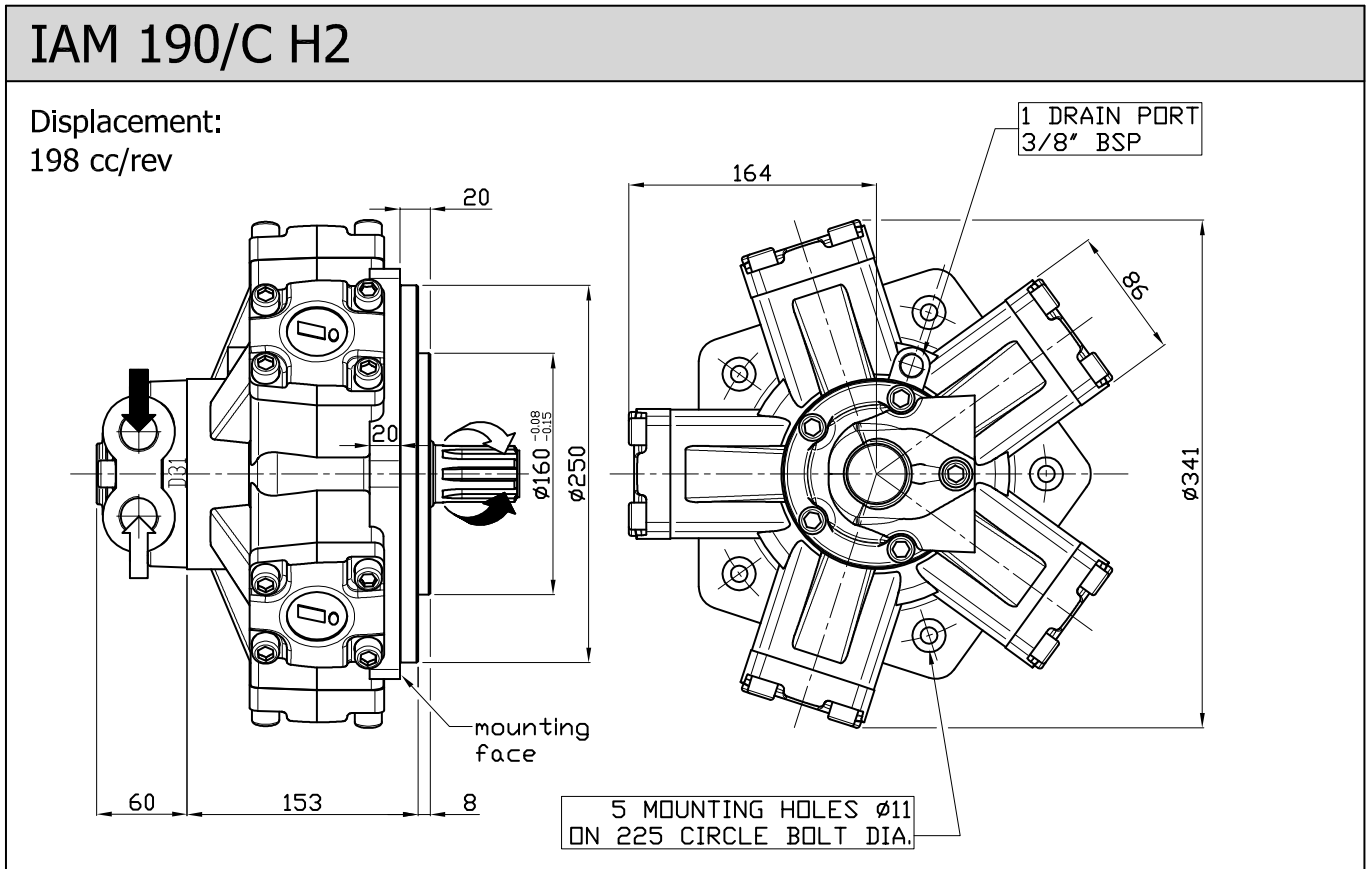
### IAM 400-500-600 H2

A0: Standard splined shaft

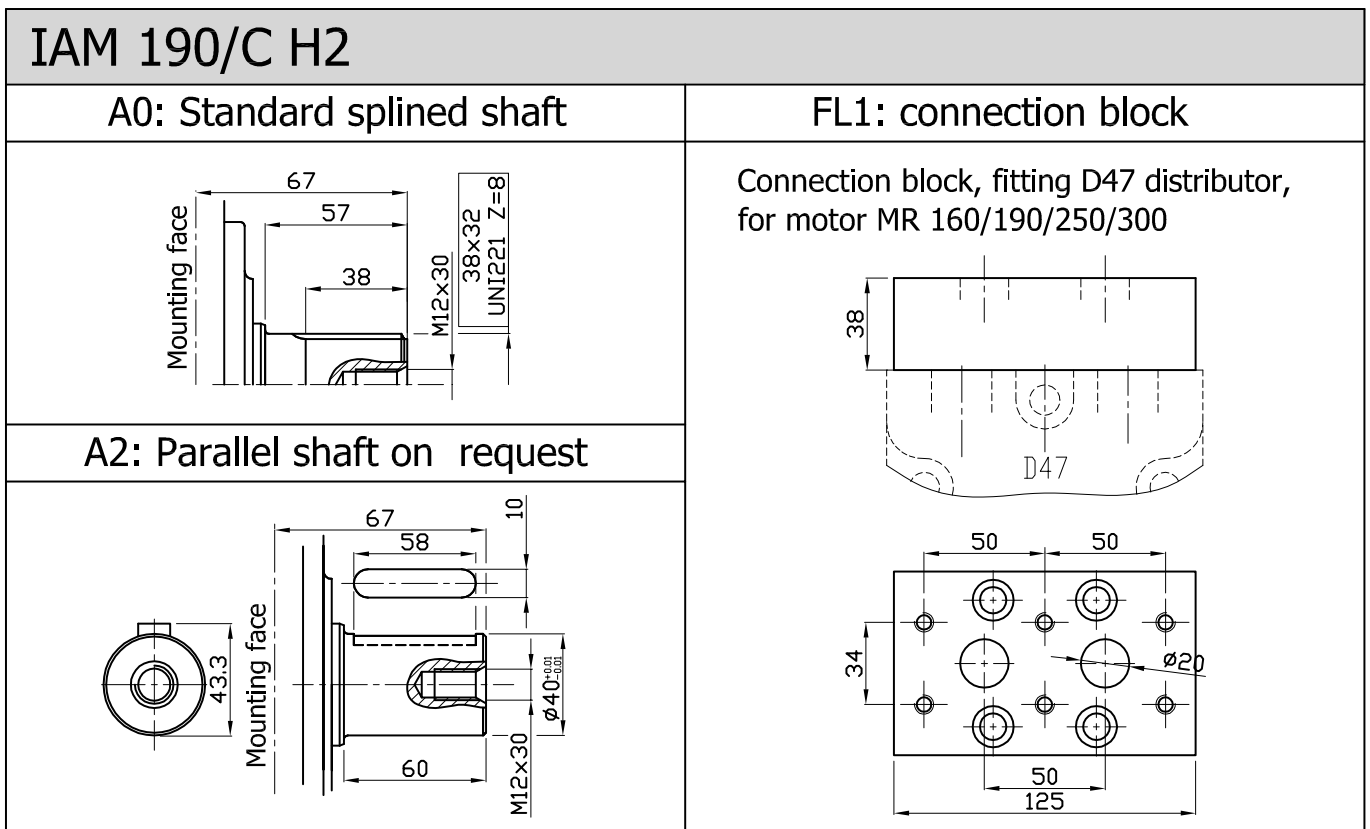
A2: Parallel shaft on request



## SIZE



## SHAFT & OPTION

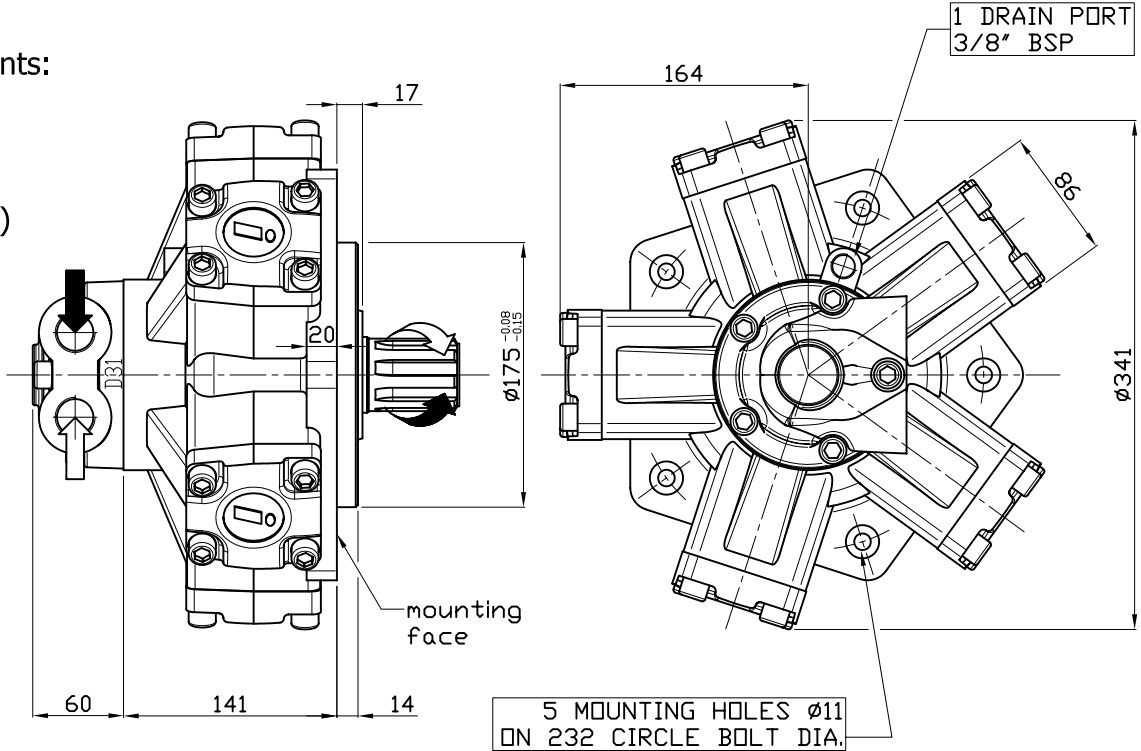




## SIZE

### IAM 300/C H2

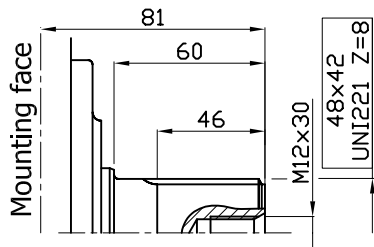
(available displacements:  
253 cc/Rev  
289 cc/Rev  
339 cc/Rev  
393 cc/Rev)



## SHAFT & OPTION

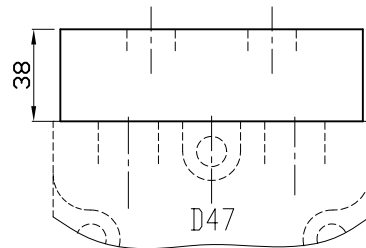
### IAM 300/C H2

**A0: Standard splined shaft**



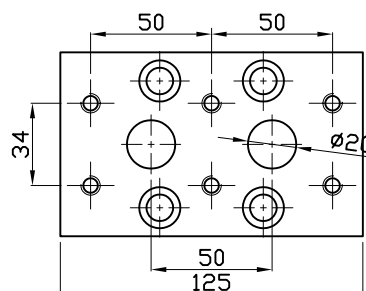
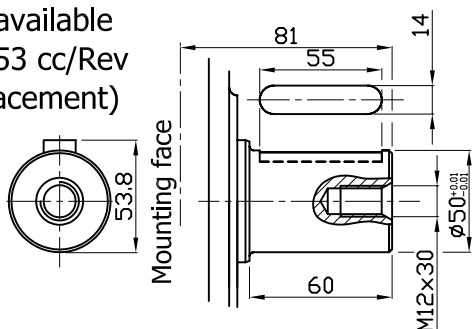
**FL1: connection block**

Connection block, fitting D47 distributor, for motor MR 160/190/250/300



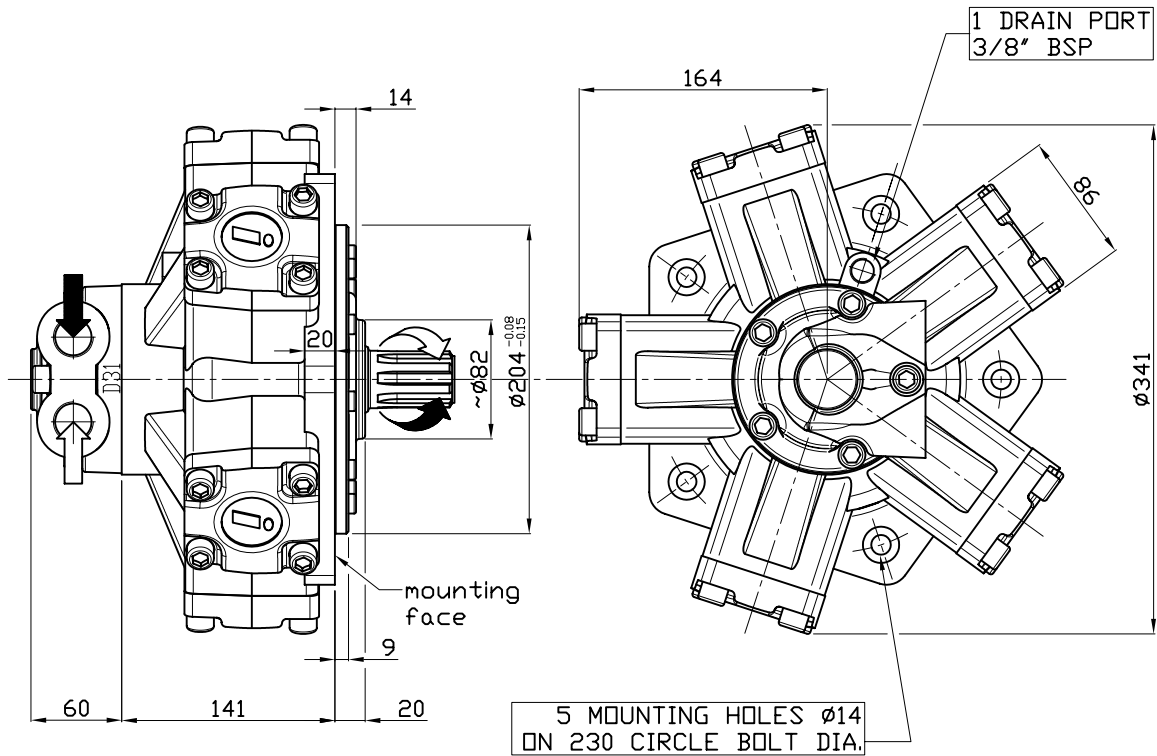
**A2: Parallel shaft on request**

(not available for 253 cc/Rev displacement)



## SIZE

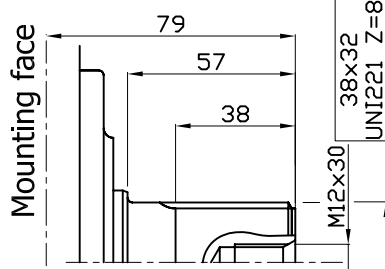
### IAM 200/B10 H2



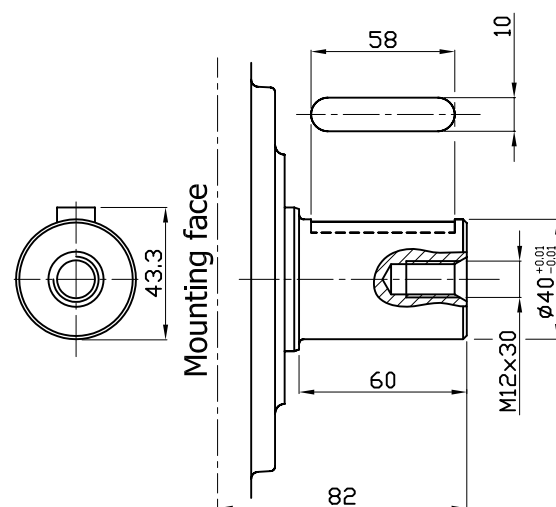
## SHAFT

### IAM 200/B10 H2

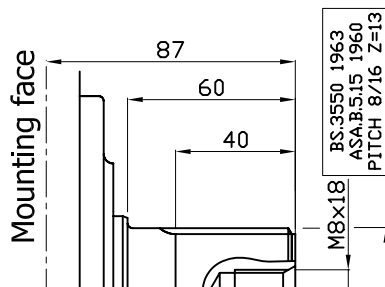
A0: Standard splined shaft



A2: Parallel shaft on request

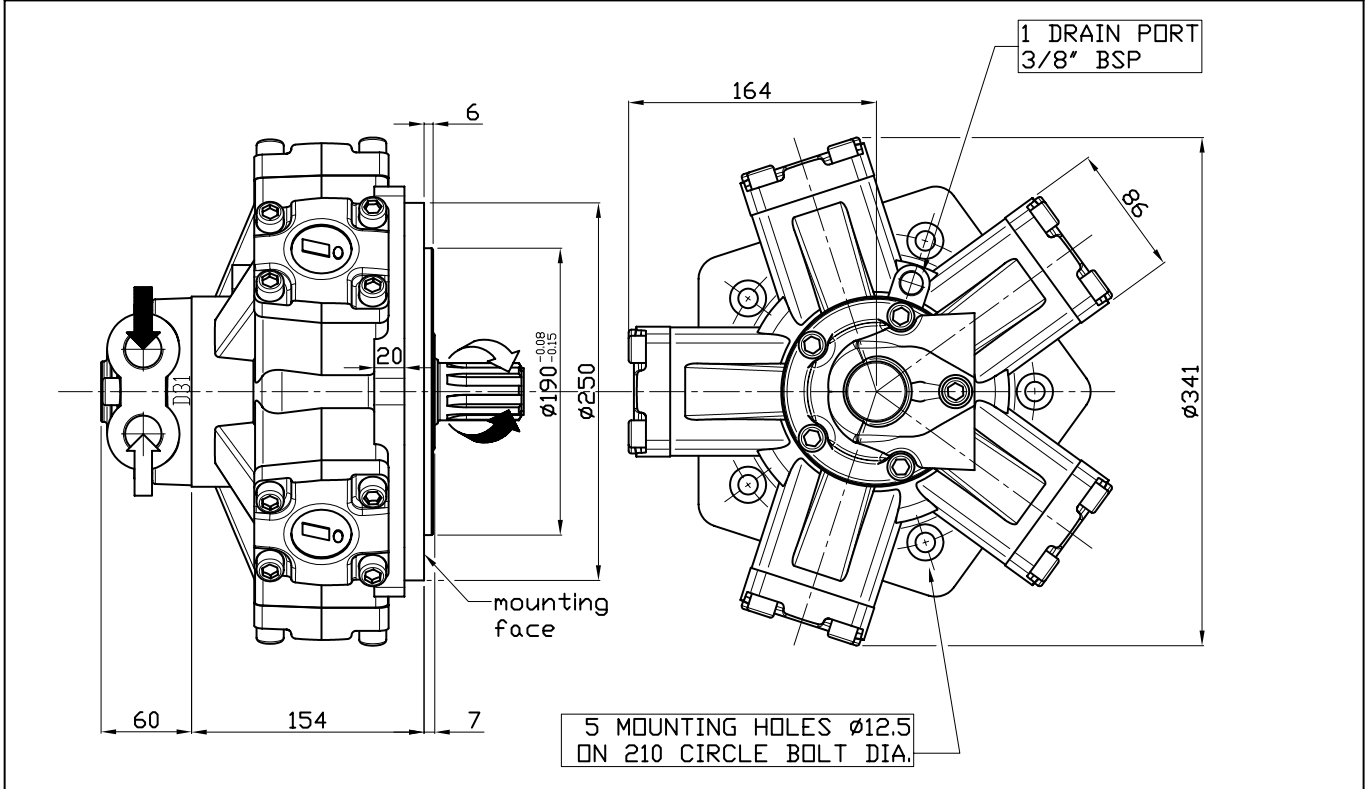


A1: Splined shaft on request



## SIZE

### IAM 200-250-300-350-400-500-600/PH H2

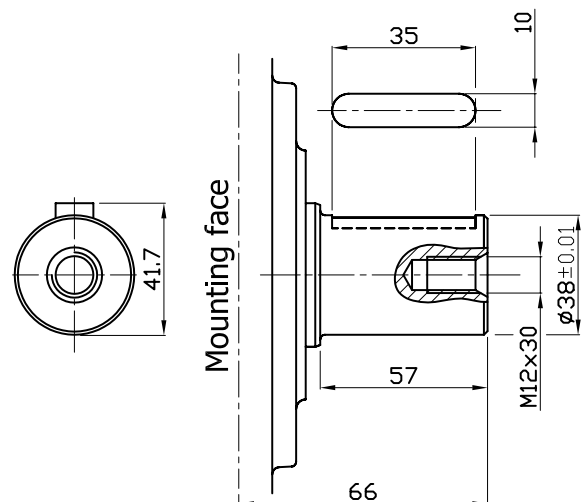
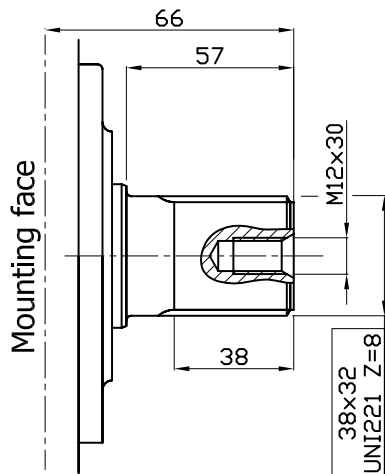


## SHAFT

### IAM 200-250-300-350-400-500-600/PH H2

A0: Standard splined shaft

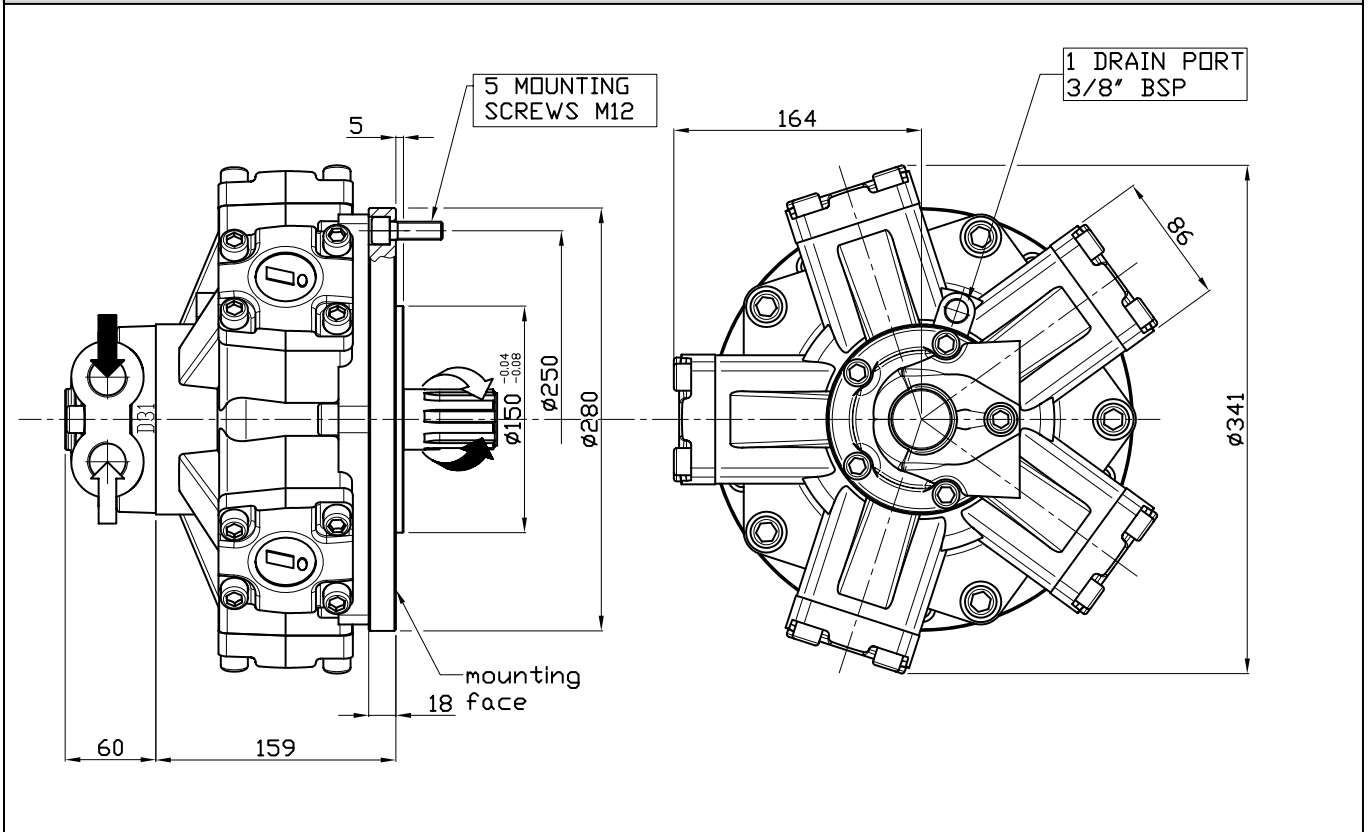
A2: Parallel shaft on request



INTERCHANGEABLE WITH GM2

## SIZE

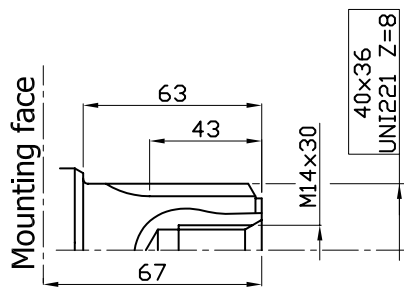
IAM 200/GM2 250/GM2 300/GM2 350/GM2 400/GM2 500/GM2 600/GM2 H2



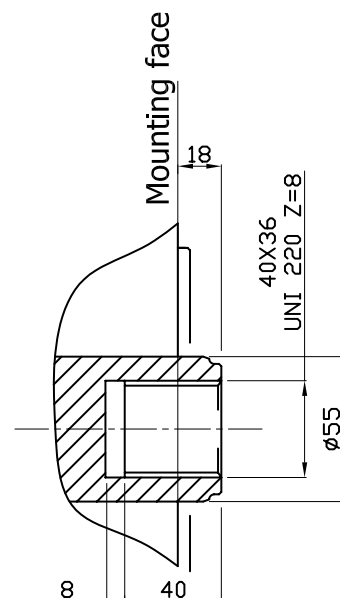
## SHAFT

IAM 200/GM2 250/GM2 300/GM2 350/GM2 400/GM2 500/GM2 600/GM2 H2

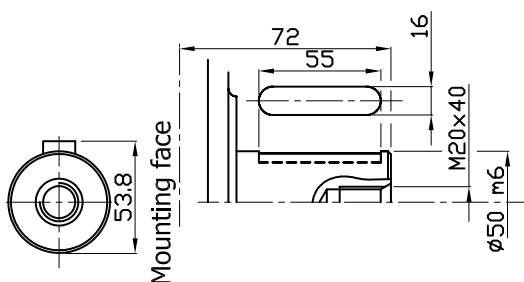
A0: Standard splined shaft



A3: Female shaft on request



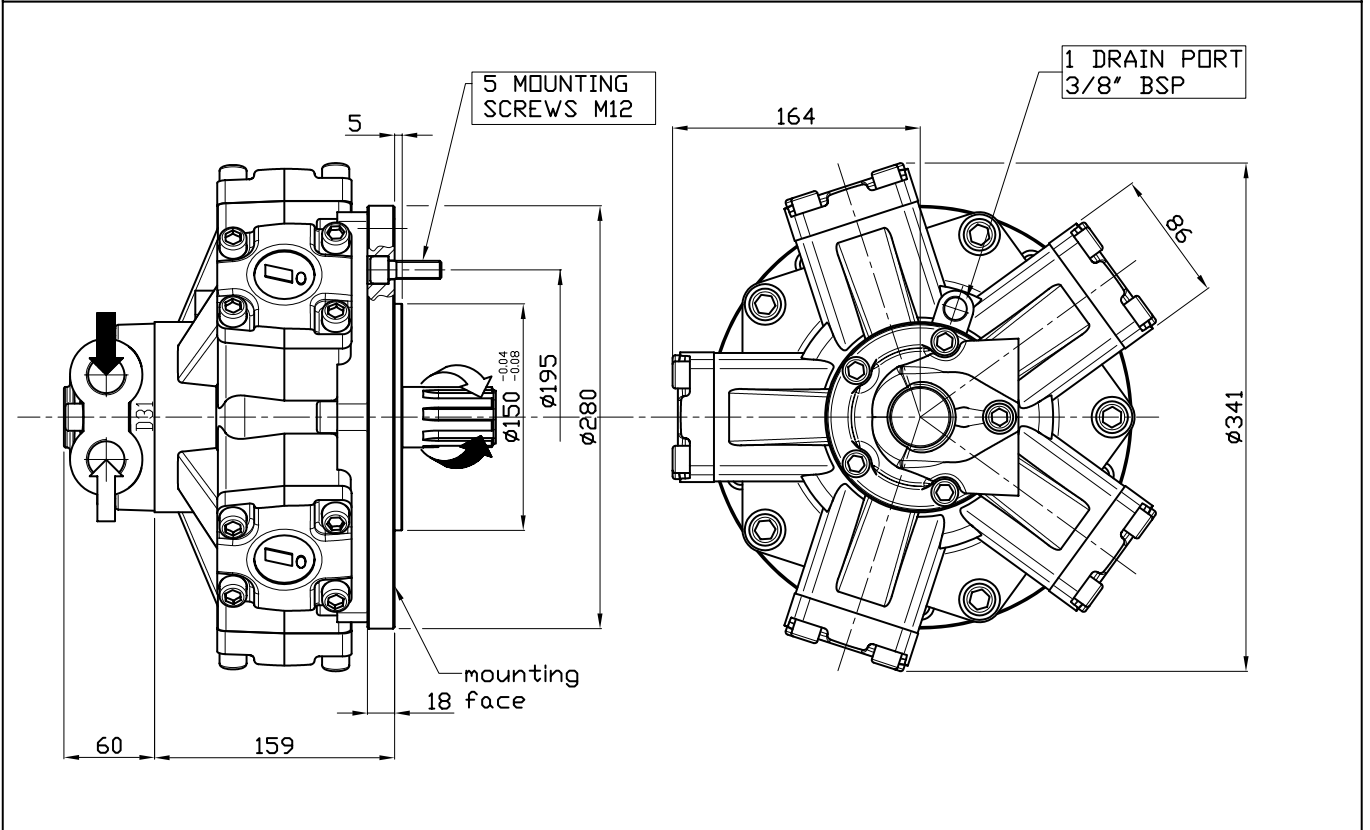
A2: Parallel shaft on request



MTCP SERIES AVAILABLE ON REQUEST

**SIZE** INTERCHANGEABLE WITH M2

IAM 200/S 250/S 300/S 350/S 400/S 500/S 600/S H2

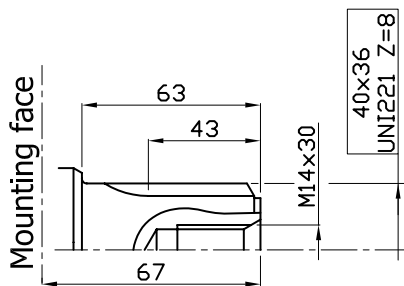


**SHAFT**

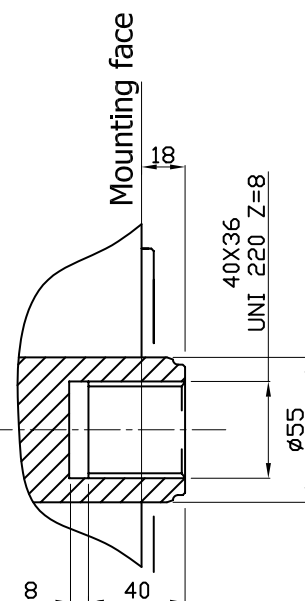
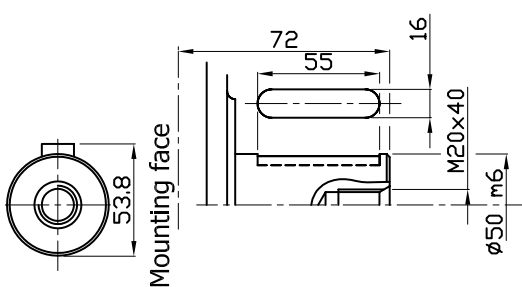
IAM 200/S 250/S 300/S 350/S 400/S 500/S 600/S H2

A0: Standard splined shaft

A3: Female shaft on request

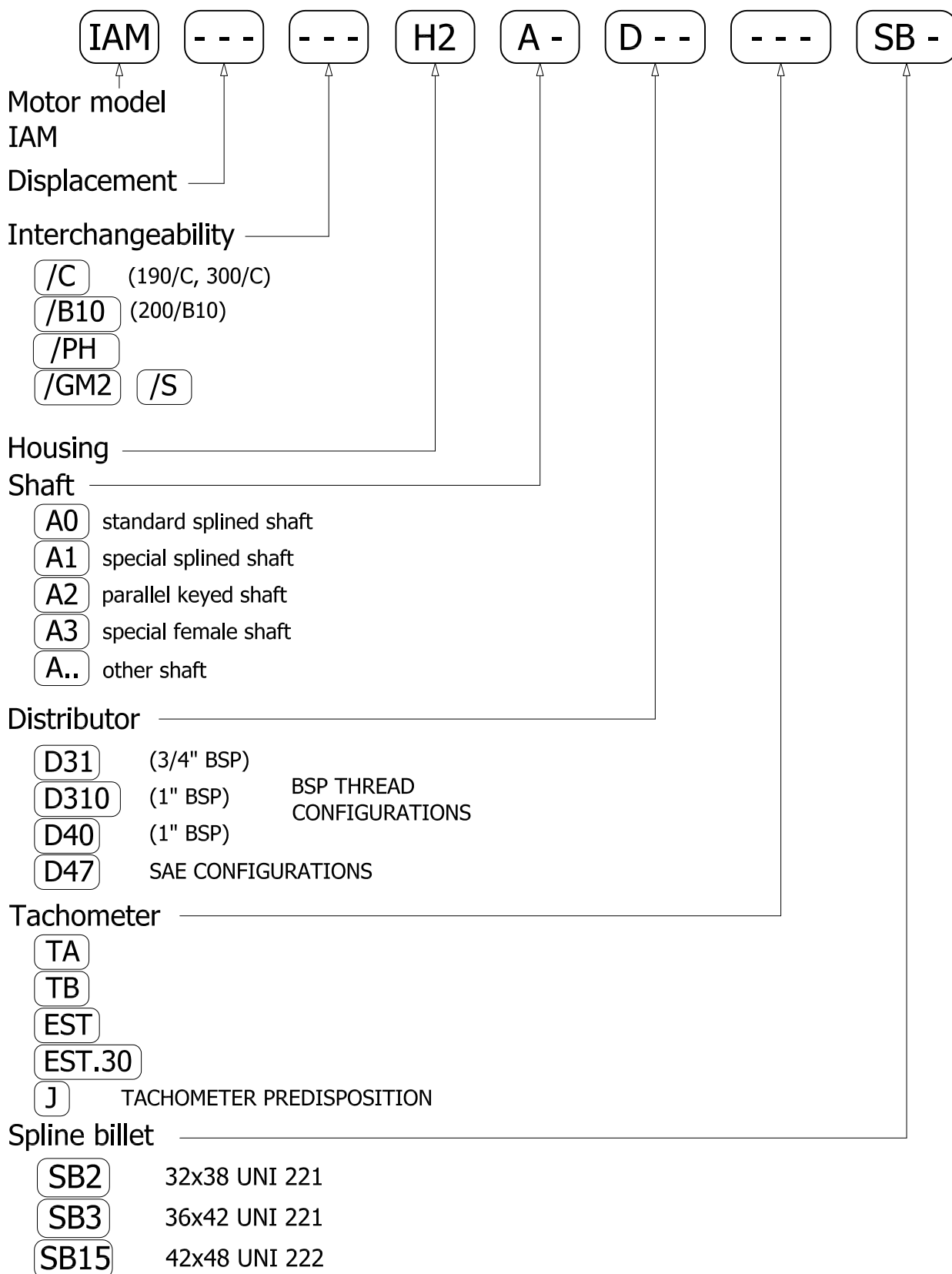


A2: Parallel shaft on request

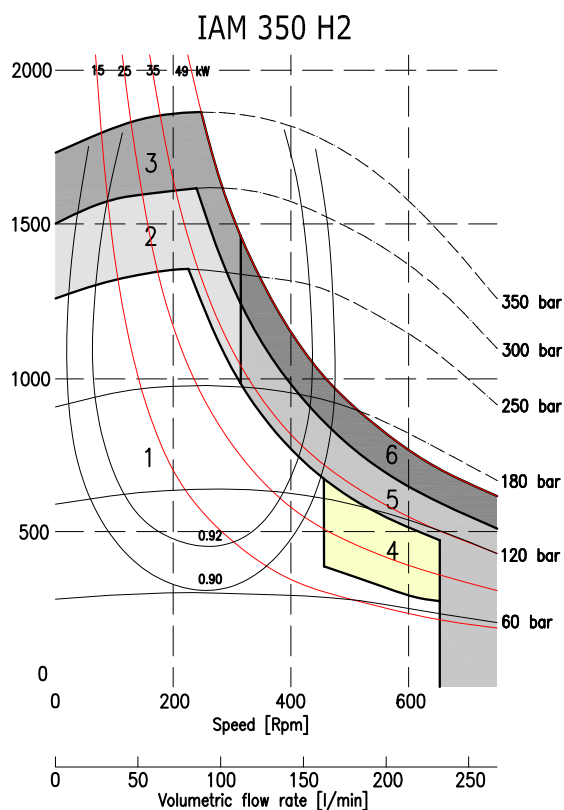
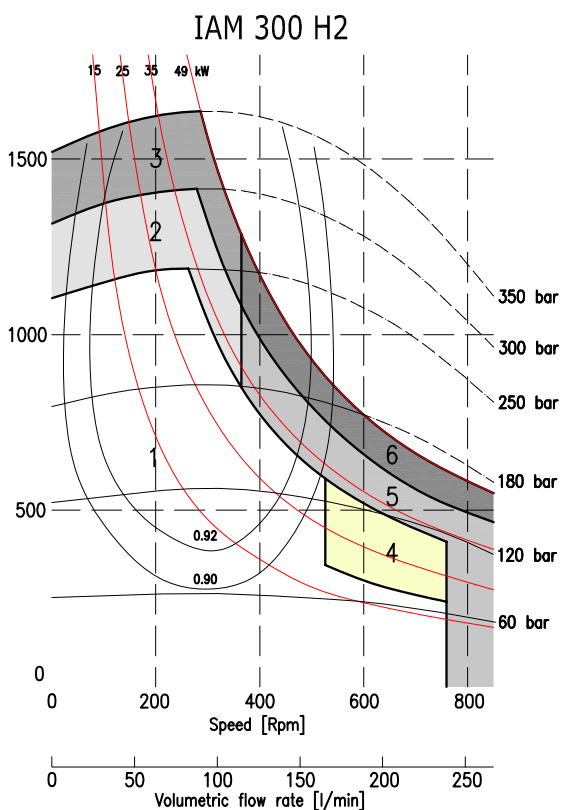
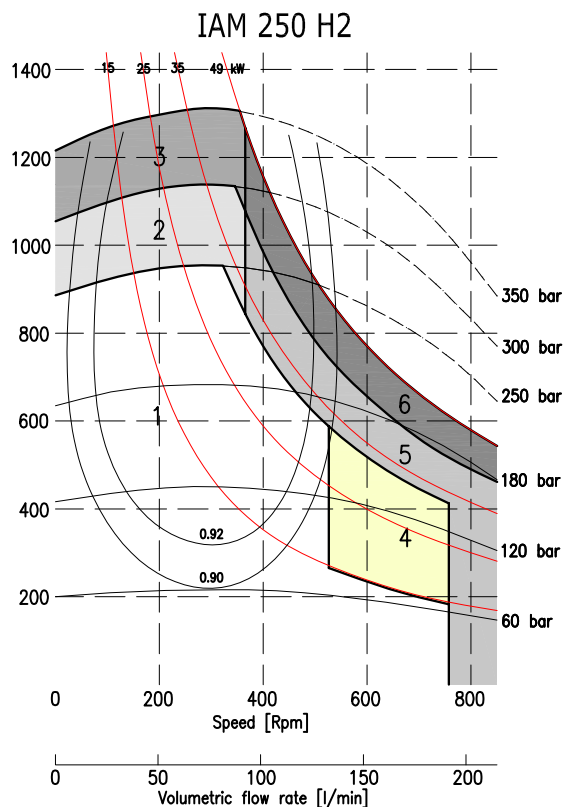
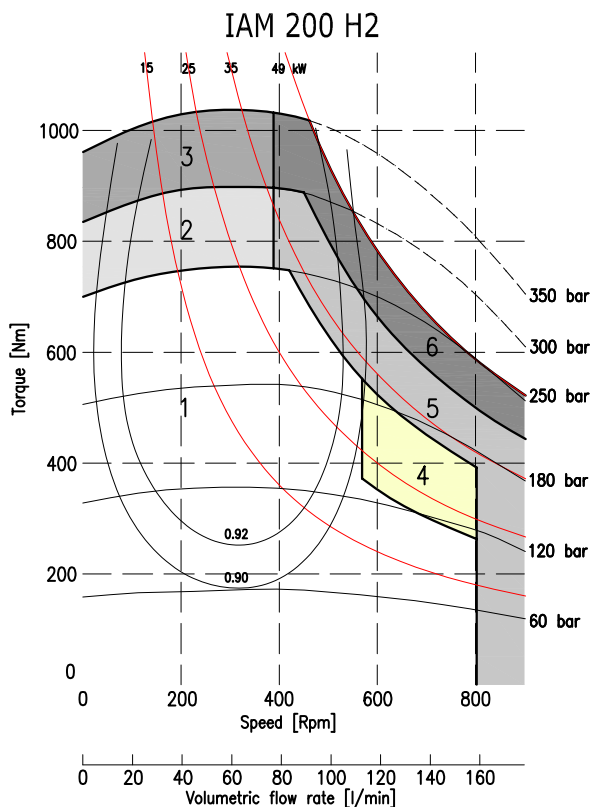


MTCP SERIES AVAILABLE ON REQUEST

## ORDERING INSTRUCTIONS

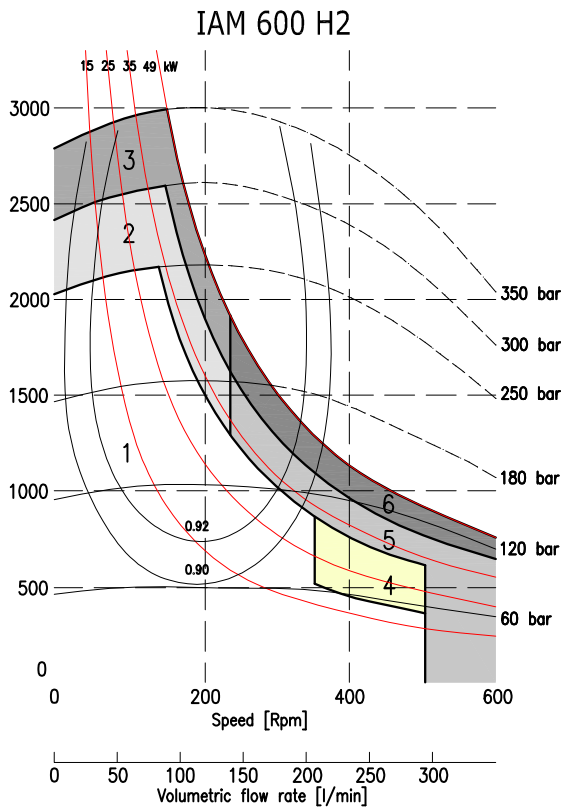
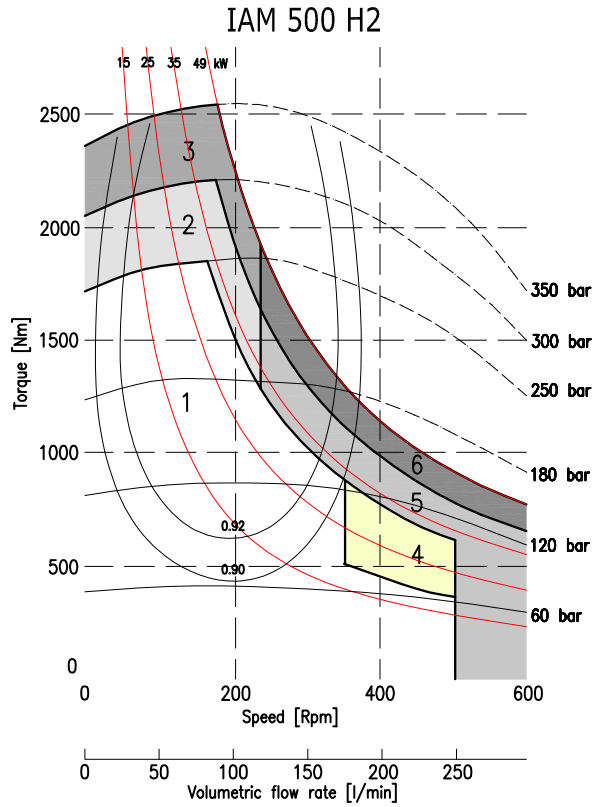
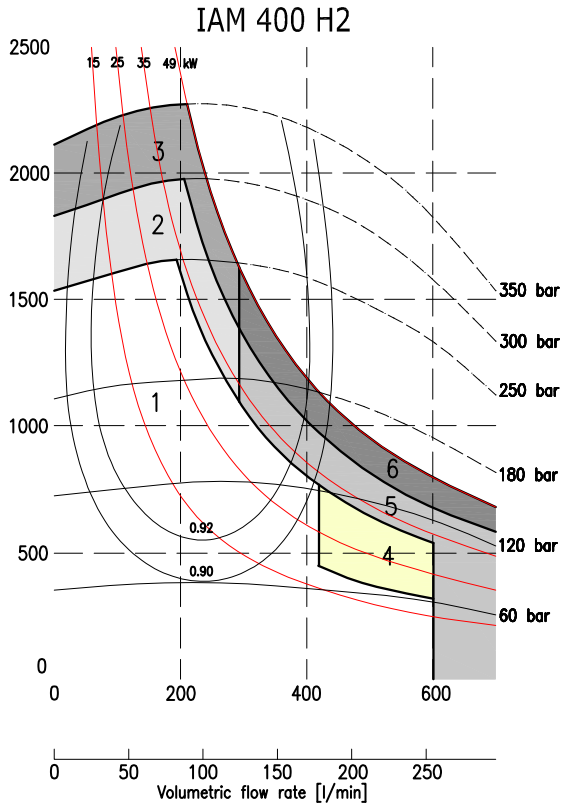


**EXAMPLE:** IAM.200.H2.A0.D40  
IAM.190/C.H2.A0.D47.J  
IAM.200/B10.H2.A0.D31.TA



1	Continuous operation
2	Intermittent operation for period 3-5 minutes every 10-15 minutes
3	Intermittent operation for very short period (3-5 seconds every 10-15 minutes)

4	Continuous operation with flushing
5	Intermittent operation for period 3-5 minutes every 10-15 minutes with flushing
6	Intermittent operation for very short period (3-5 seconds every 10-15 minutes) with flushing



1	Continuous operation
2	Intermittent operation for period 3-5 minutes every 10-15 minutes
3	Intermittent operation for very short period (3-5 seconds every 10-15 minutes)

4	Continuous operation with flushing
5	Intermittent operation for period 3-5 minutes every 10-15 minutes with flushing
6	Intermittent operation for very short period (3-5 seconds every 10-15 minutes) with flushing



---

# **INTERMOT - ADVANCED - MOTORS**

## **IAM SERIES**

---

### **H3 MODEL**

---

**IAM 350-400-450-500  
600-650-700 H3**

**IAM 450/C H3**

**IAM 450/B30 H3**

**IAM 800 H3**

**IAM 800/N H3**

**IAM 400-450-500  
600-700/GM3 H3**

**IAM 400-450-500  
600-700/S H3**



Factory 19 / 5 Lyn Parade PRESTONS NSW 2170  
Ph: (02) 9607 4100 Fax: (02) 9607 4200

---

## **INDEX**

TECHNICAL DATA - - - - -	Pag. 42
IAM H3 350-400-450-500-600-650-700- - - - -	" 43
IAM H3 450/C - - - - -	" 44
IAM H3 450/B30 - - - - -	" 45
IAM H3 800 - - - - -	" 46
IAM H3 800/N - - - - -	" 47
IAM H3 400-450-500-600-700/GM3 - - - - -	" 48
IAM H3 400-450-500-600-700/S - - - - -	" 49
ORDERING INSTRUCTIONS - - - - -	" 50
GRAPHIC PERFORMANCES H3 350-400-450-500 - - - - -	" 51
GRAPHIC PERFORMANCES H3 600-650-700-800 - - - - -	" 52

---

# TECHNICAL DATA

# H3

MODEL		IAM 350 H3	IAM 400 H3	IAM 450 H3	IAM 500 H3	IAM 600 H3	IAM 650 H3	IAM 700 H3	IAM 800 H3
Displacement	cc/rev	349	397	452	491	594	660	707	791
Specific Torque	Nm/bar	5.6	6.3	7.2	7.8	9.4	10.5	11.2	12.6
Max cont. Pressure	bar	250	250	250	250	250	250	250	250
Max int. Pressure	bar	300	300	300	300	300	300	300	300
Peak pressure	bar	350	350	350	350	350	350	350	350
Max continuous speed	rpm	630	600	600	600	550	500	450	400
Peak speed	rpm	700	680	680	680	630	580	500	450
Max continuous power	HP	63	63	63	63	63	63	63	63
	kW	45	45	45	45	45	45	45	45
Max power	HP	91	91	91	91	91	91	91	91
	kW	68	68	68	68	68	68	68	68

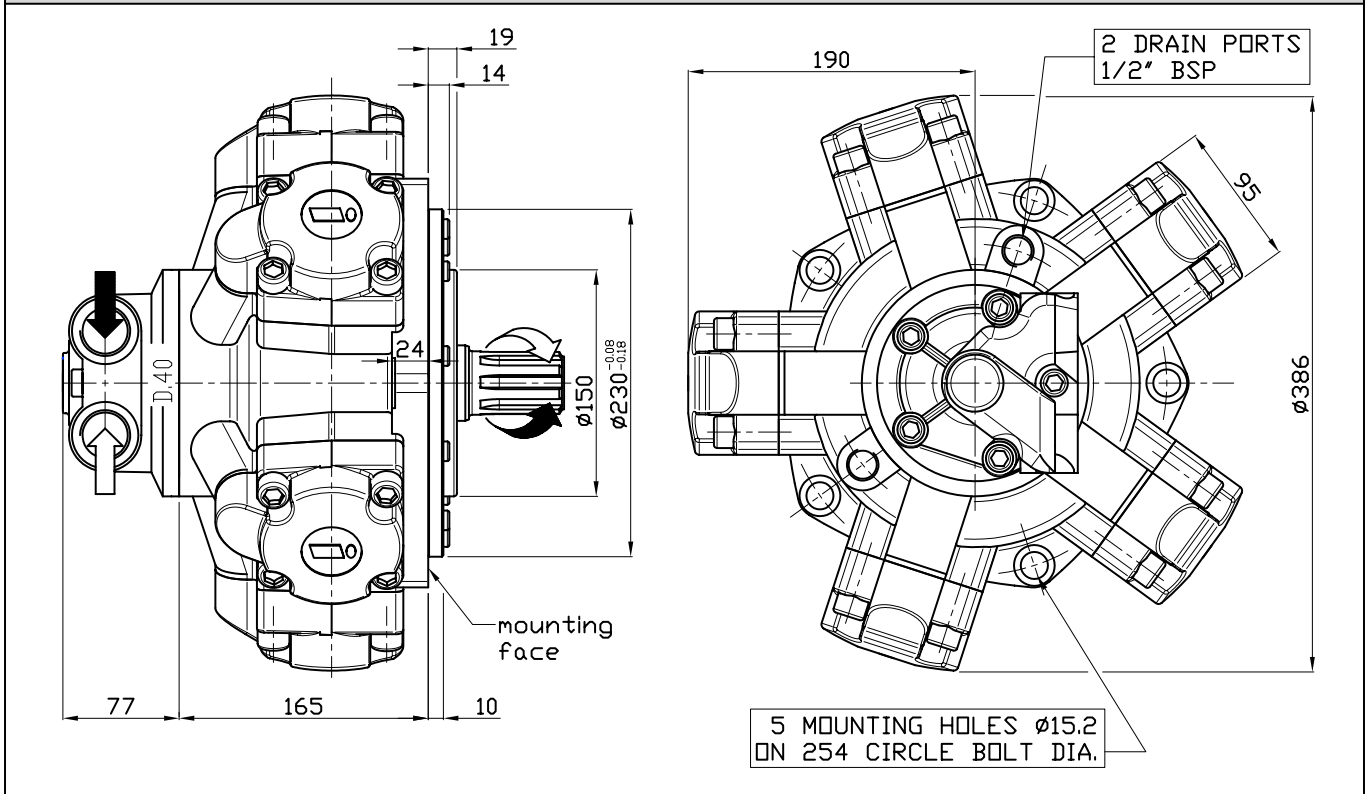
- N° of pistons: 5
- Max case pressure: 6 bar
- Max back pressure: 70 bar
- Dry weight: 68 kg
- Temperature range: -30°C ÷ +70°C
- Minimum speed: 1 rpm
- Flushing flow<sup>(\*)</sup>:
 

IAM H3 350 – 400 – 450 – 500	8 l/min
IAM H3 600 – 650 – 700 – 800	10 l/min

(\*)for further details regarding flushing go to page 10 of this catalogue.

## SIZE

### IAM 350-400-450-500-600-650-700 H3

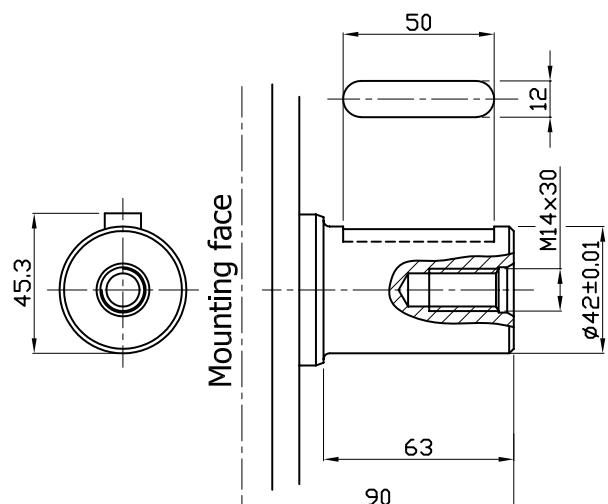
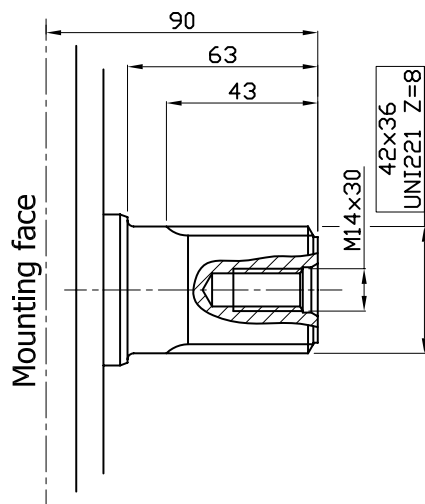


## SHAFT

### IAM 350-400-450-500-600-650-700 H3

A0: Standard splined shaft

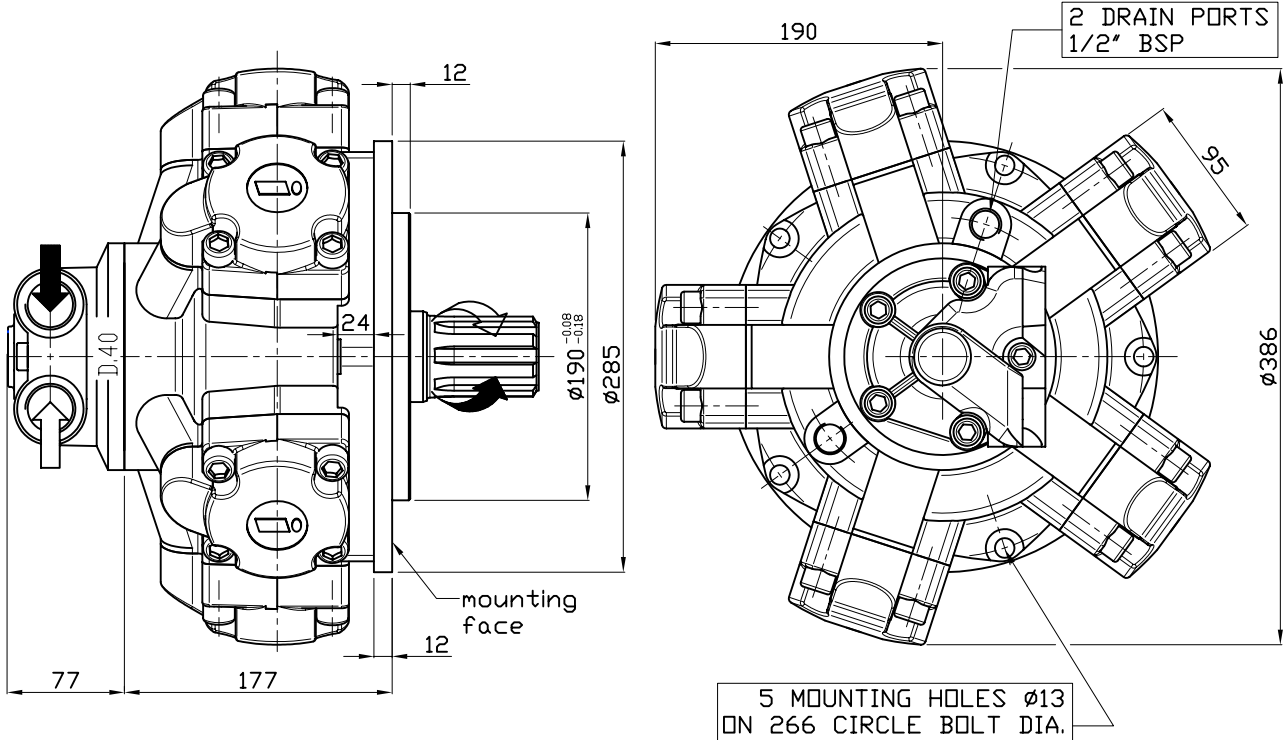
A2: Parallel shaft on request



IAM 350 H3 A0 AVAILABLE ON REQUEST

## SIZE

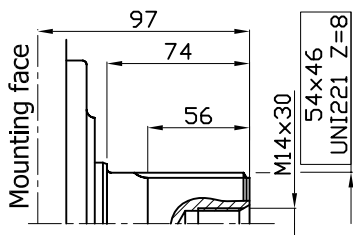
### IAM 450/C H3



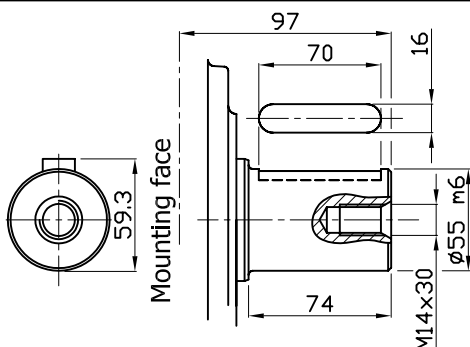
## SHAFT & OPTION

### IAM 450/C H3

**A1: Standard splined shaft**

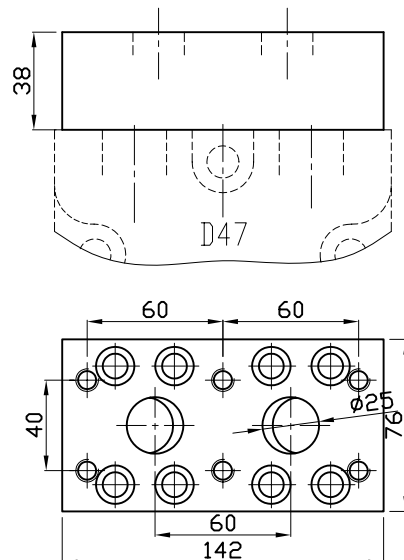


**A2: Parallel shaft on request**



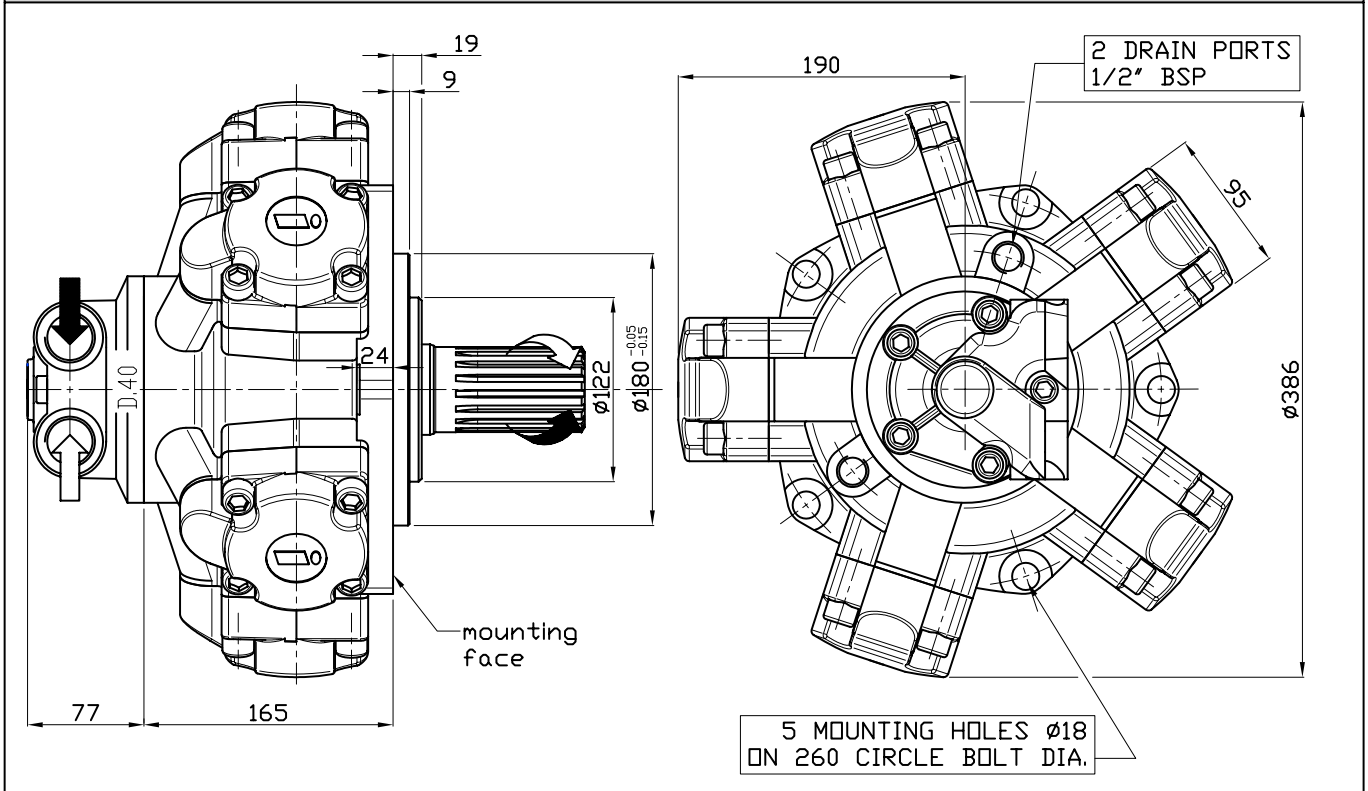
**FL2: connection block**

Connection block, fitting D47 distributor, for motor MR 350/450/500/600/700/800



## SIZE

### IAM 450/B30 H3



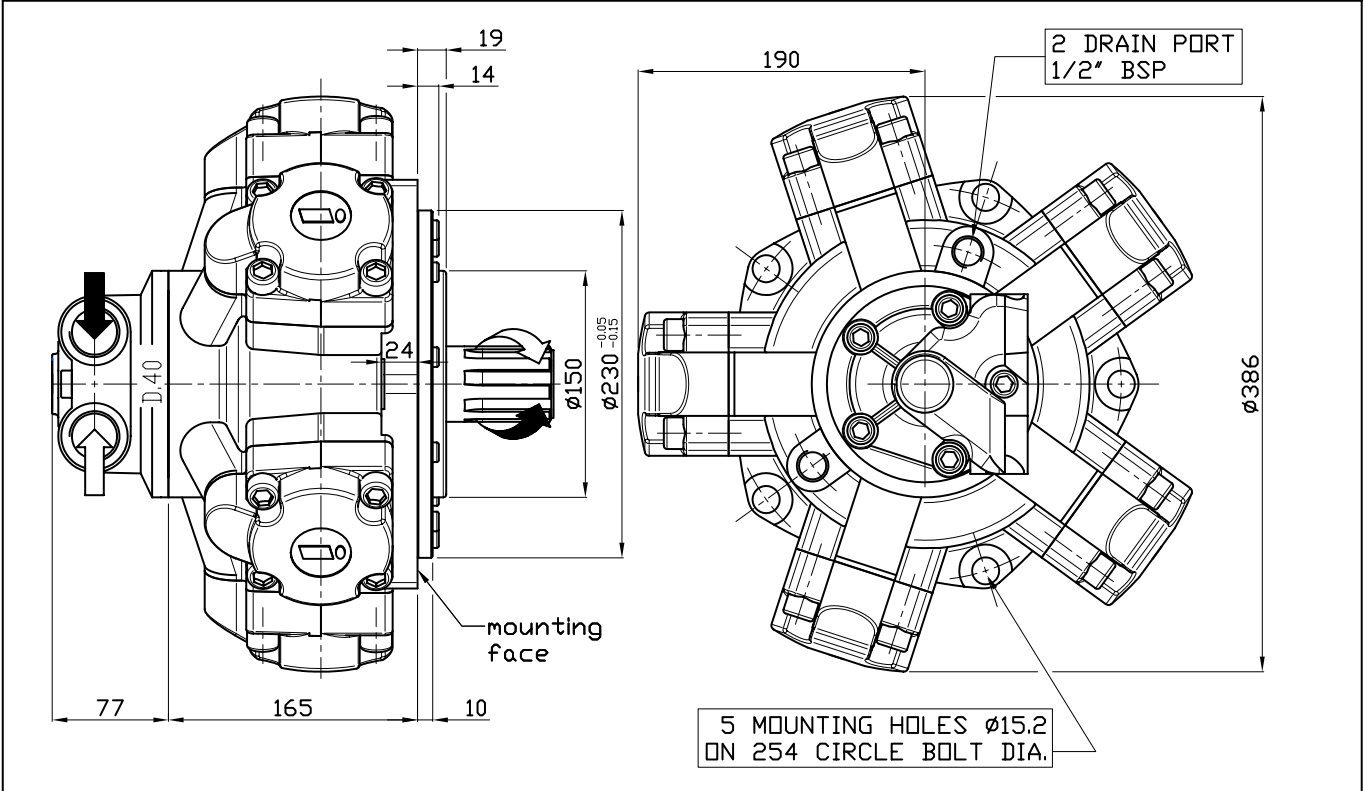
## SHAFT

### IAM 450/B30 H3

A0: Standard splined shaft	A1: Splined shaft on request	A2: Parallel shaft on request
<p>Technical drawing of a standard splined shaft (A0). Dimensions include a total length of 130, a splined length of 100, and a splined diameter of 71. The shaft has a <math>1/2"</math> 20 UNF 2B thread and is specified as BS 3550-1963 P 8/16 - 17. The mounting face is indicated on the left.</p>	<p>Technical drawing of a splined shaft on request (A1). Dimensions include a total length of 130, a splined length of 100, and a splined diameter of 71. The shaft has a <math>1/2"</math> 20 UNF 2B thread and is specified as W 55x3x17x7h DIN 5480. The mounting face is indicated on the left.</p>	<p>Technical drawing of a parallel shaft on request (A2). Dimensions include a shaft length of 90, a thread length of 14, a total length of 100, and a mounting face diameter of 130. The shaft has a <math>1/2"</math> 20 UNF 2B thread and a diameter of <math>\phi 55</math> with a tolerance of <math>-0.015</math> to <math>-0.015</math>. A circular detail shows a diameter of 58.8. The mounting face is indicated on the left.</p>

## SIZE

### IAM 800 H3



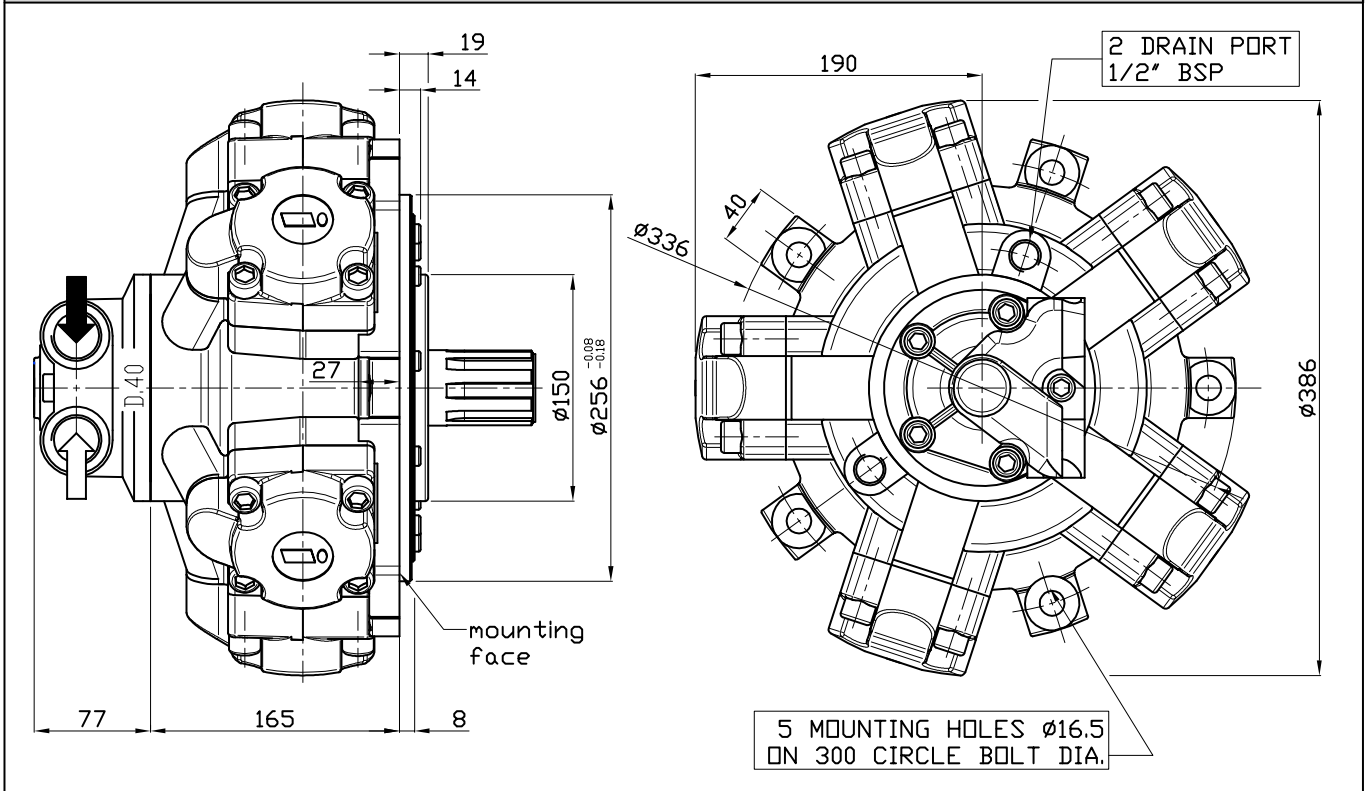
## SHAFT

### IAM 800 H3

A0: Standard splined shaft	A2: Parallel shaft on request	A22: Parallel shaft on request
<p>Technical drawing of a standard splined shaft (A0). Dimensions: 90 total length, 47 splined length, M14x30 thread, 50x46 splined length, UNI 220 Z=8.</p>	<p>Technical drawing of a parallel shaft (A2). Dimensions: 50 shaft length, 12 chamfer length, M14x30 thread, 63 total length, 90 mounting face diameter, <math>\phi 42 \pm 0.01</math> shaft diameter.</p>	<p>Technical drawing of a parallel shaft (A22). Dimensions: 60 shaft length, 16 chamfer length, M14x30 thread, 90 total length, <math>\phi 50_{-0.01}^{+0.01}</math> shaft diameter.</p>

## SIZE

### IAM 800/N H3



## SHAFT

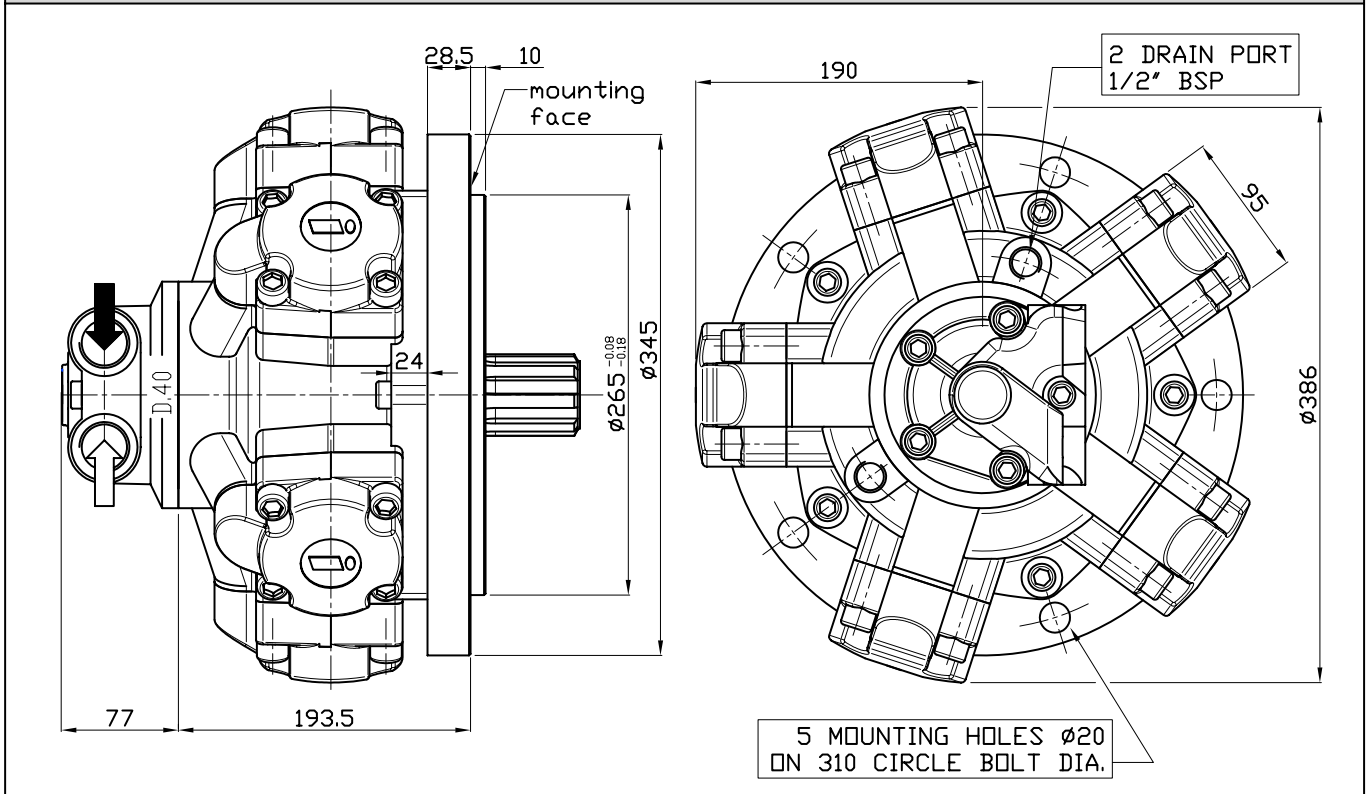
### IAM 800/N H3

A1: Standard splined shaft	A2: Parallel shaft on request	A22: Parallel shaft on request
<p>Technical drawing of a standard splined shaft (A1). Dimensions: 90 total length, 47 splined length, M14x30 thread, 50x46 UNI 220 Z=8 splines, and mounting face.</p>	<p>Technical drawing of a parallel shaft (A2). Dimensions: 50 shaft length, 12 shaft diameter, M14x30 thread, <math>\phi 42 \pm 0.01</math> shaft diameter, 63 total length, and 90 mounting face diameter.</p>	<p>Technical drawing of a parallel shaft (A22). Dimensions: 60 shaft length, 16 shaft diameter, M14x30 thread, <math>\phi 50 \pm 0.01</math> shaft diameter, 90 total length, and 90 mounting face diameter.</p>

INTERCHANGEABLE WITH GM3

## SIZE

IAM 400/GM3 450/GM3 500/GM3 600/GM3 700/GM3 H3

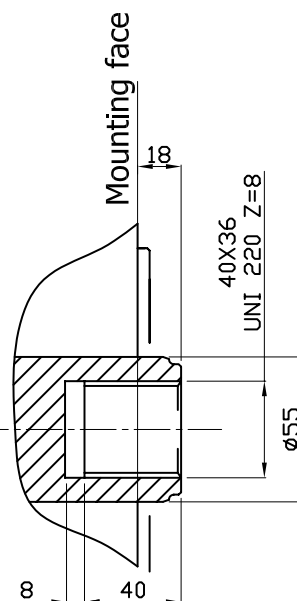
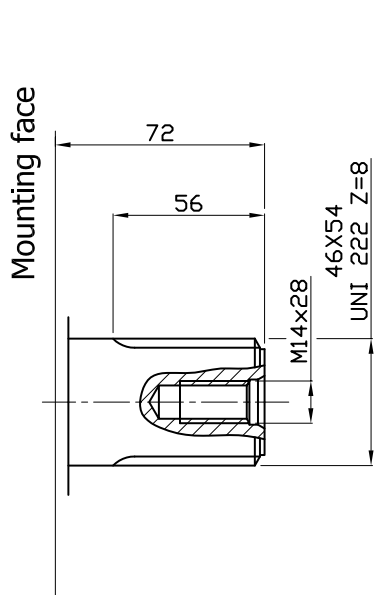


## SHAFT

IAM 400/GM3 450/GM3 500/GM3 600/GM3 700/GM3 H3

A0: Standard splined shaft

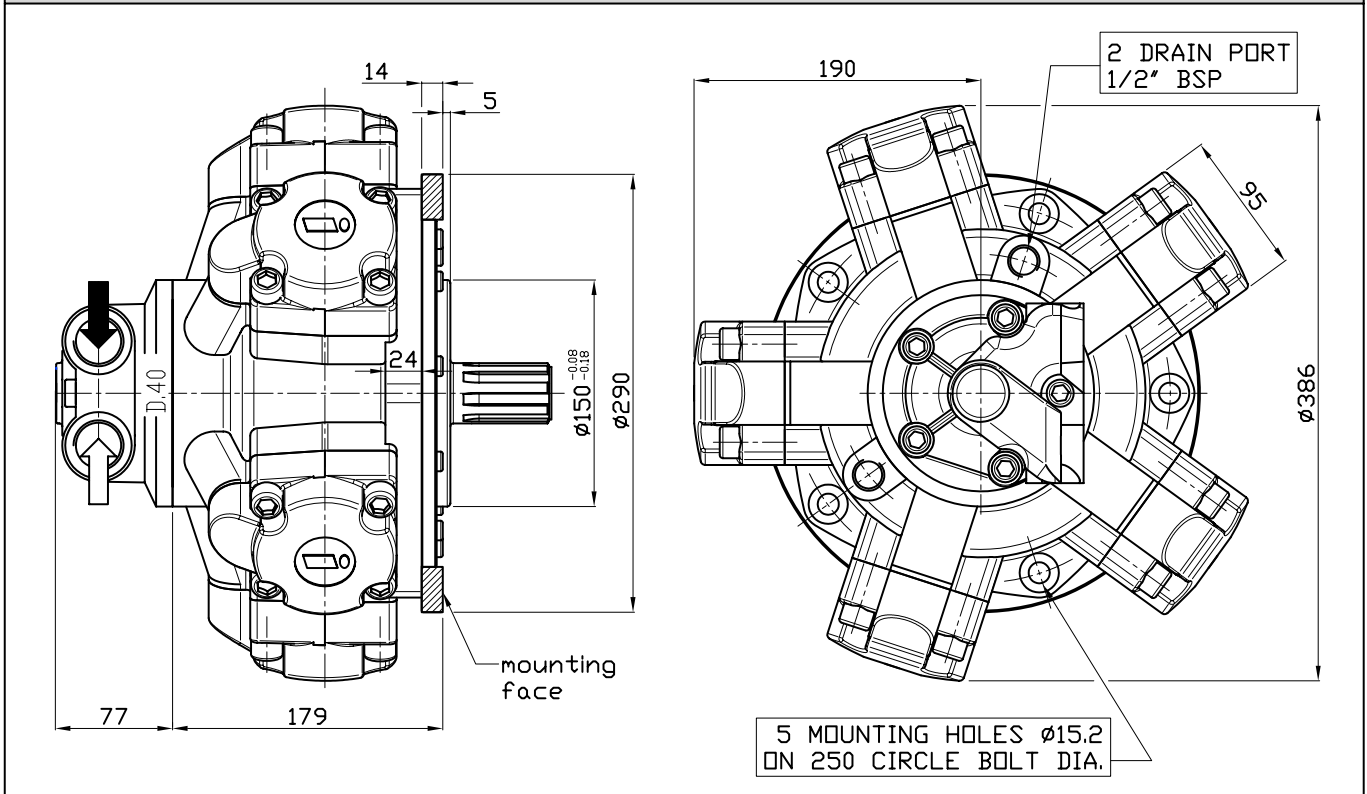
A3: Female shaft on request





**SIZE** INTERCHANGEABLE WITH M3

**IAM 400/S 450/S 500/S 600/S 700/S H3**

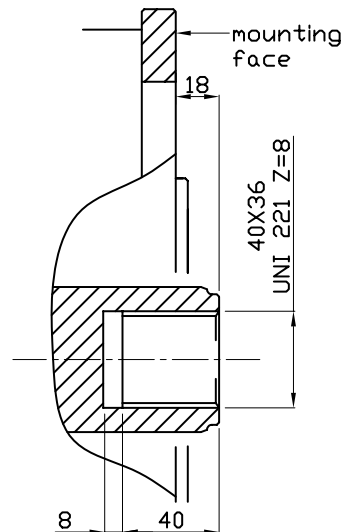
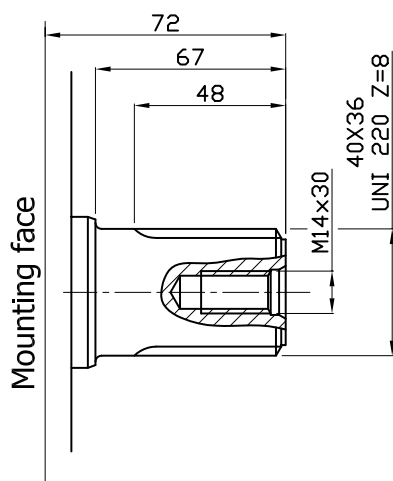


**SHAFT**

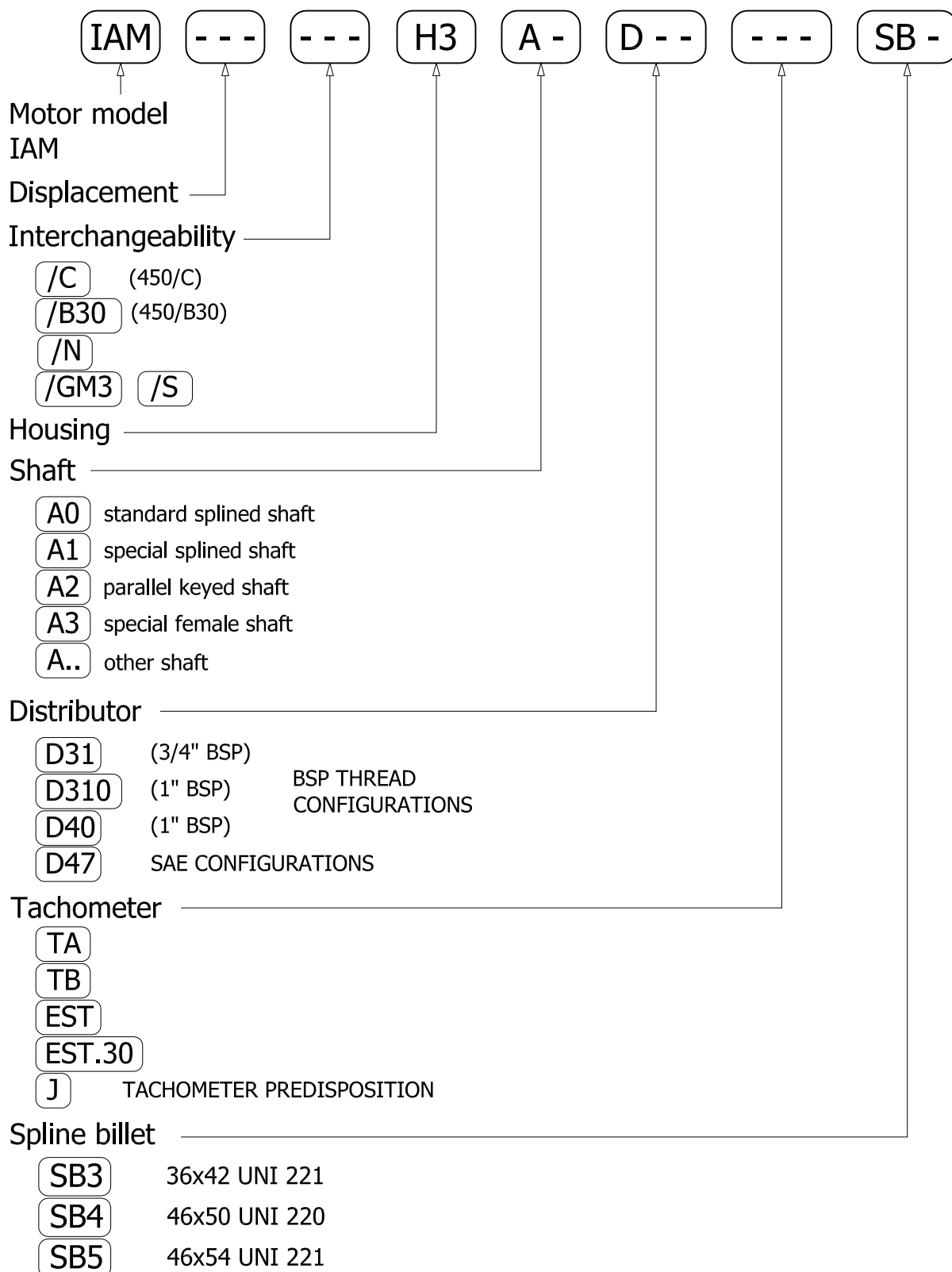
**IAM 400/S 450/S 500/S 600/S 700/S H3**

A0: Standard splined shaft

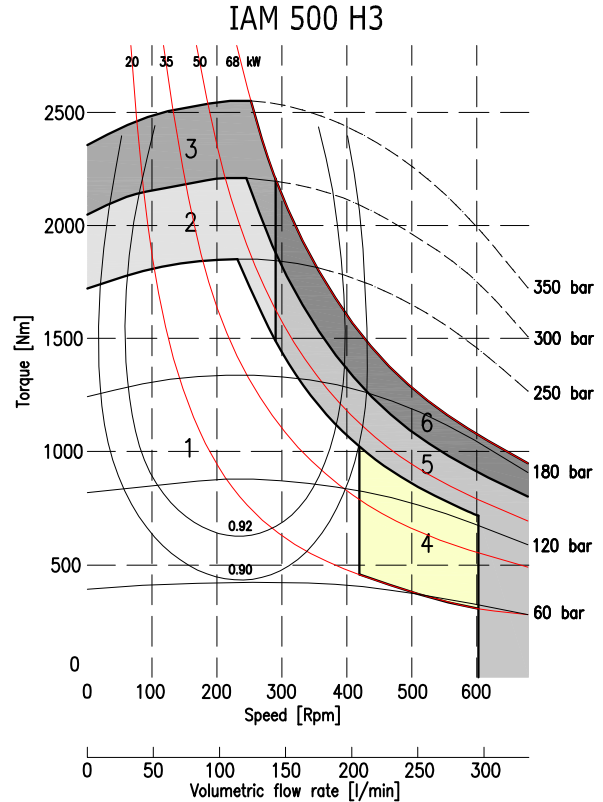
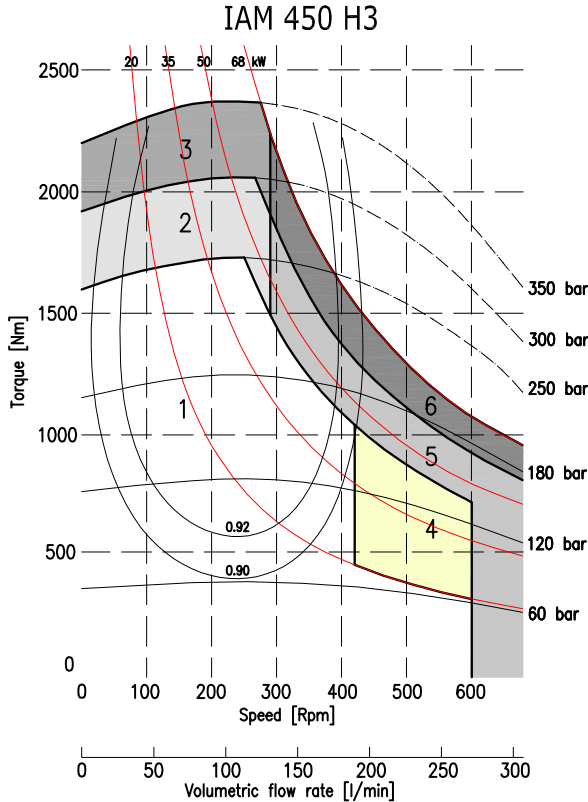
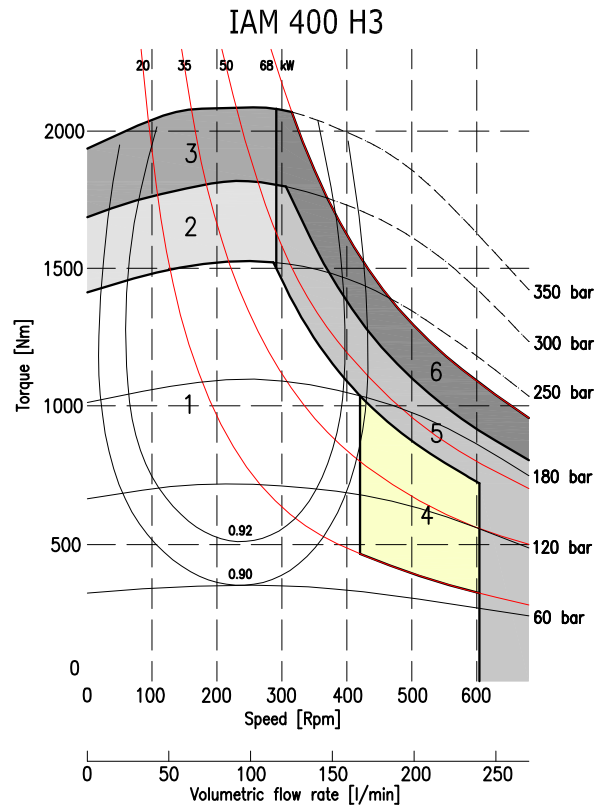
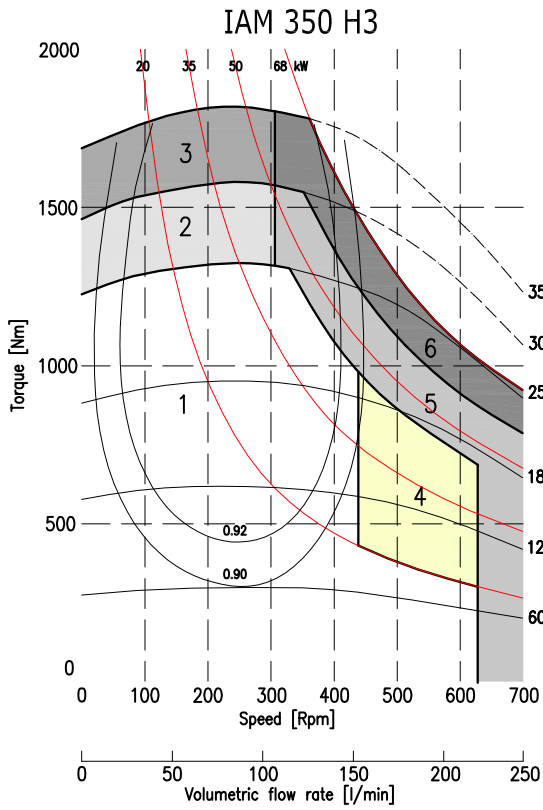
A3: Female shaft on request



## ORDERING INSTRUCTIONS



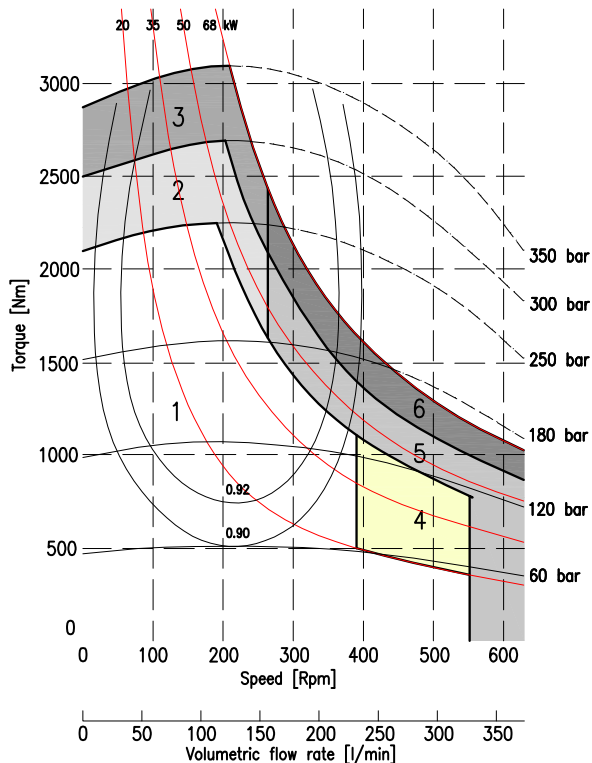
**EXAMPLE:** IAM.400.H3.A0.D40  
IAM.450/C.H3.A1.D40.J.SB5  
IAM.500/GM3.H3.A0.D40.TA.SB5



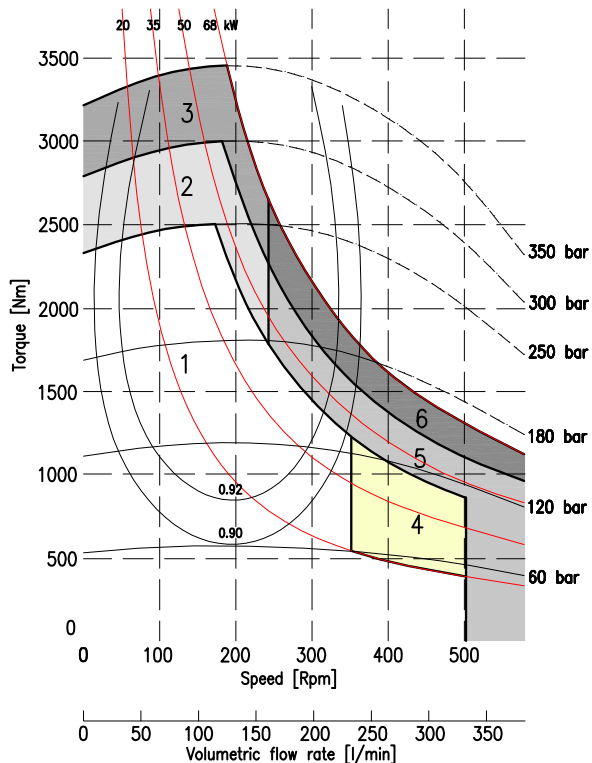
1	Continuous operation
2	Intermittent operation for period 3-5 minutes every 10-15 minutes
3	Intermittent operation for very short period (3-5 seconds every 10-15 minutes)

4	Continuous operation with flushing
5	Intermittent operation for period 3-5 minutes every 10-15 minutes with flushing
6	Intermittent operation for very short period (3-5 seconds every 10-15 minutes) with flushing

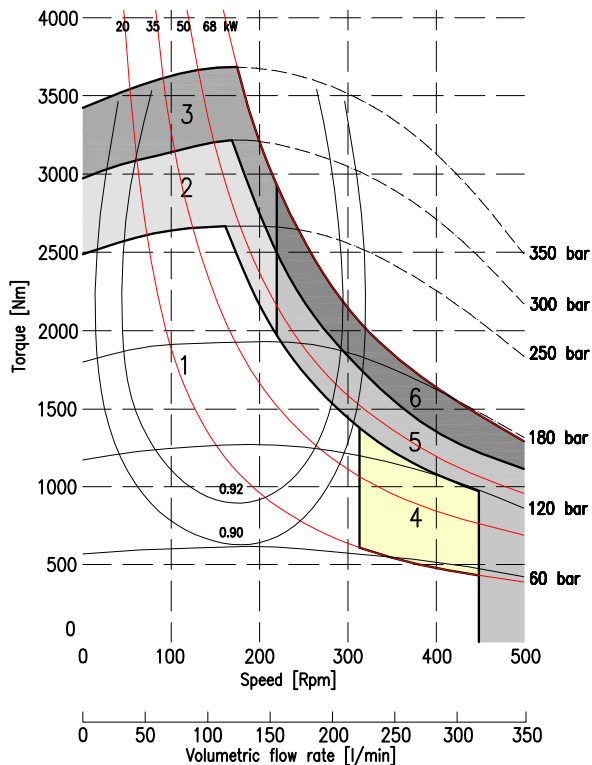
IAM 600 H3



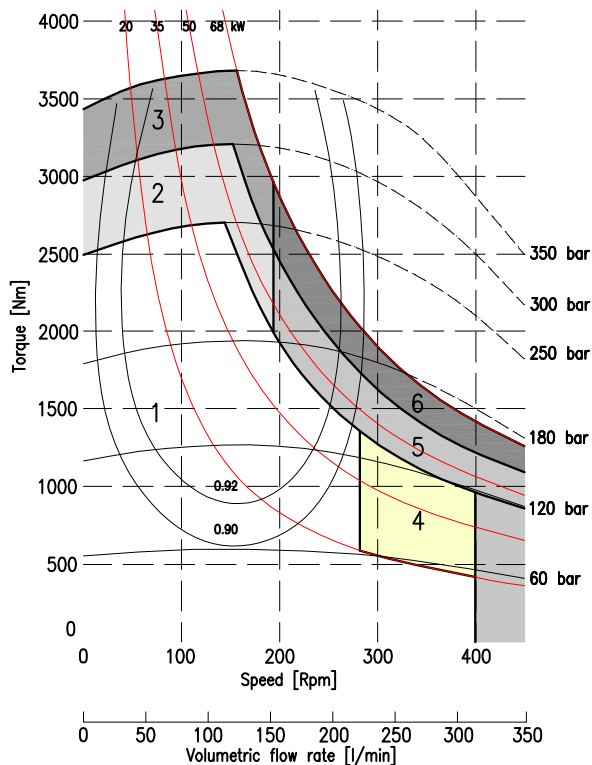
IAM 650 H3



IAM 700 H3



IAM 800 H3



1	Continuous operation
2	Intermittent operation for period 3-5 minutes every 10-15 minutes
3	Intermittent operation for very short period (3-5 seconds every 10-15 minutes)

4	Continuous operation with flushing
5	Intermittent operation for period 3-5 minutes every 10-15 minutes with flushing
6	Intermittent operation for very short period (3-5 seconds every 10-15 minutes) with flushing

# ***INTERMOT - ADVANCED - MOTORS***

## ***IAM SERIES***

### ***H4 MODEL***

***IAM 700-800-850-900***  
***1000-1100-1200***  
***1250-1400 H4***

***IAM 700/C-800/C H4***

***IAM 800/B45 H4***

***IAM 700-800-900***  
***1000-1100-1250/S H4***

***IAM 700-800-900***  
***1000-1100-1250/GM4 H4***

## ***INDEX***

TECHNICAL DATA - - - - -	<i>Pag.</i> 54
IAM H4 700-800-850-900-1000-1100-1200-1250-1400 - - - - -	" 55
IAM H4 700/C-800/C - - - - -	" 56
IAM H4 800/B45 - - - - -	" 57
IAM H4 700-800-900-1000-1100-1250/S - - - - -	" 58
IAM H4 700-800-900-1000-1100-1250/GM4- - - - -	" 59
ORDERING INSTRUCTIONS - - - - -	" 60
GRAPHIC PERFORMANCES H4 700-800-850-900 - - - - -	" 61
GRAPHIC PERFORMANCES H4 1000-1100-1200-1250 - - - - -	" 62
GRAPHIC PERFORMANCES H4 1400 - - - - -	" 63

# TECHNICAL DATA

# H4

MODEL		IAM 700 H4	IAM 800 H4	IAM 850 H4	IAM 900 H4	IAM 1000 H4	IAM 1100 H4	IAM 1200 H4	IAM 1250 H4	IAM 1400 H4
Displacement	cc/rev	714	792	847	904	992	1116	1192	1247	1332
Specific Torque	Nm/bar	11.4	12.6	13.5	14.4	15.8	17.8	19.0	19.8	21.2
Max cont. Pressure	bar	250	250	250	250	250	250	250	250	250
Max int. Pressure	bar	300	300	300	300	300	300	300	300	300
Peak pressure	bar	350	350	350	350	350	350	350	350	350
Max continuous speed	rpm	500	450	450	450	330	330	300	250	200
Peak speed	rpm	580	530	530	530	400	400	350	300	250
Max continuous power	HP	75	75	75	75	75	75	75	75	75
	kW	55	55	55	55	55	55	55	55	55
Max power	HP	107	107	107	107	107	107	107	107	107
	kW	80	80	80	80	80	80	80	80	80

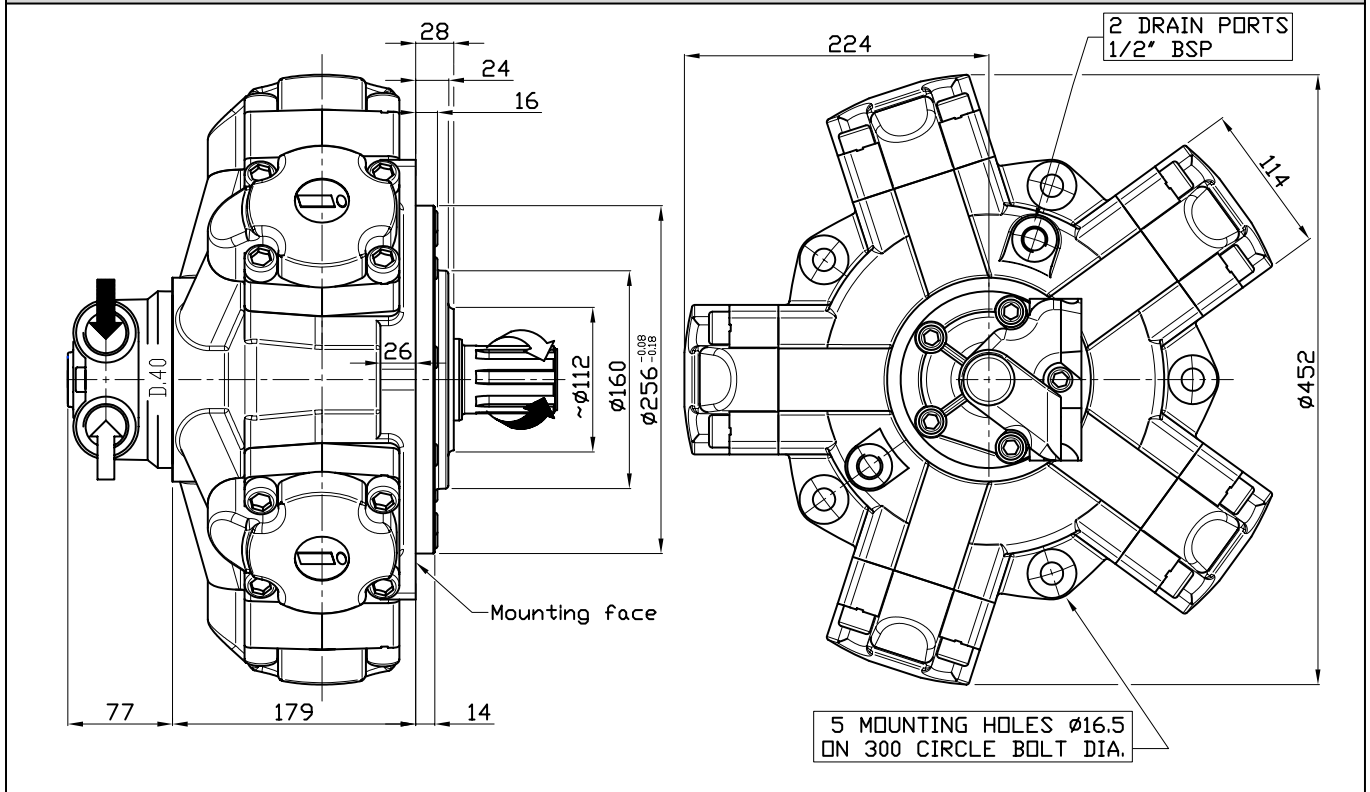
- N° of pistons: 5
- Max case pressure: 6 bar
- Max back pressure: 70 bar
- Dry weight: 92 kg
- Temperature range: -30°C ÷ +70°C
- Minimum speed: 1 rpm
- Flushing flow<sup>(\*)</sup>:
 

IAM H4 700 – 800 – 850 – 900	10 l/min
IAM H4 1000 – 1100 – 1200 – 1250	10 l/min

(\*)for further details regarding flushing go to page 10 of this catalogue.

## SIZE

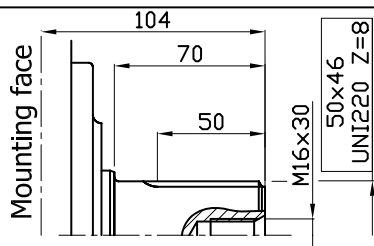
### IAM 700-800-850-900-1000-1100-1200-1250-1400 H4



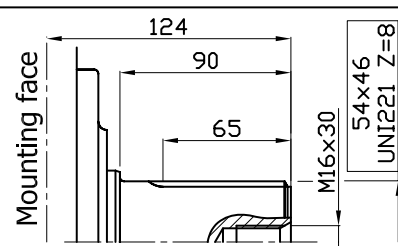
## SHAFT

### IAM 700-800-850-900-1000-1100-1200-1250-1400 H4

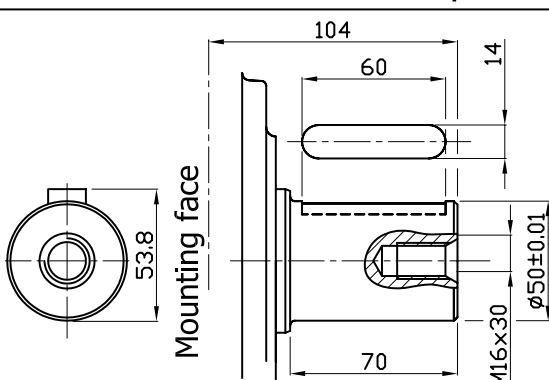
A0: Standard splined shaft



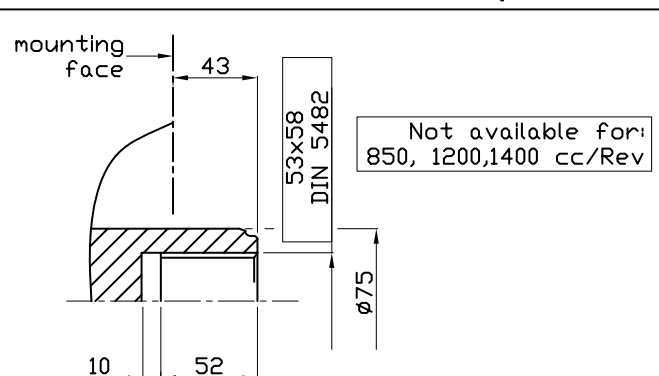
A1: Splined shaft on request



A2: Parallel shaft on request

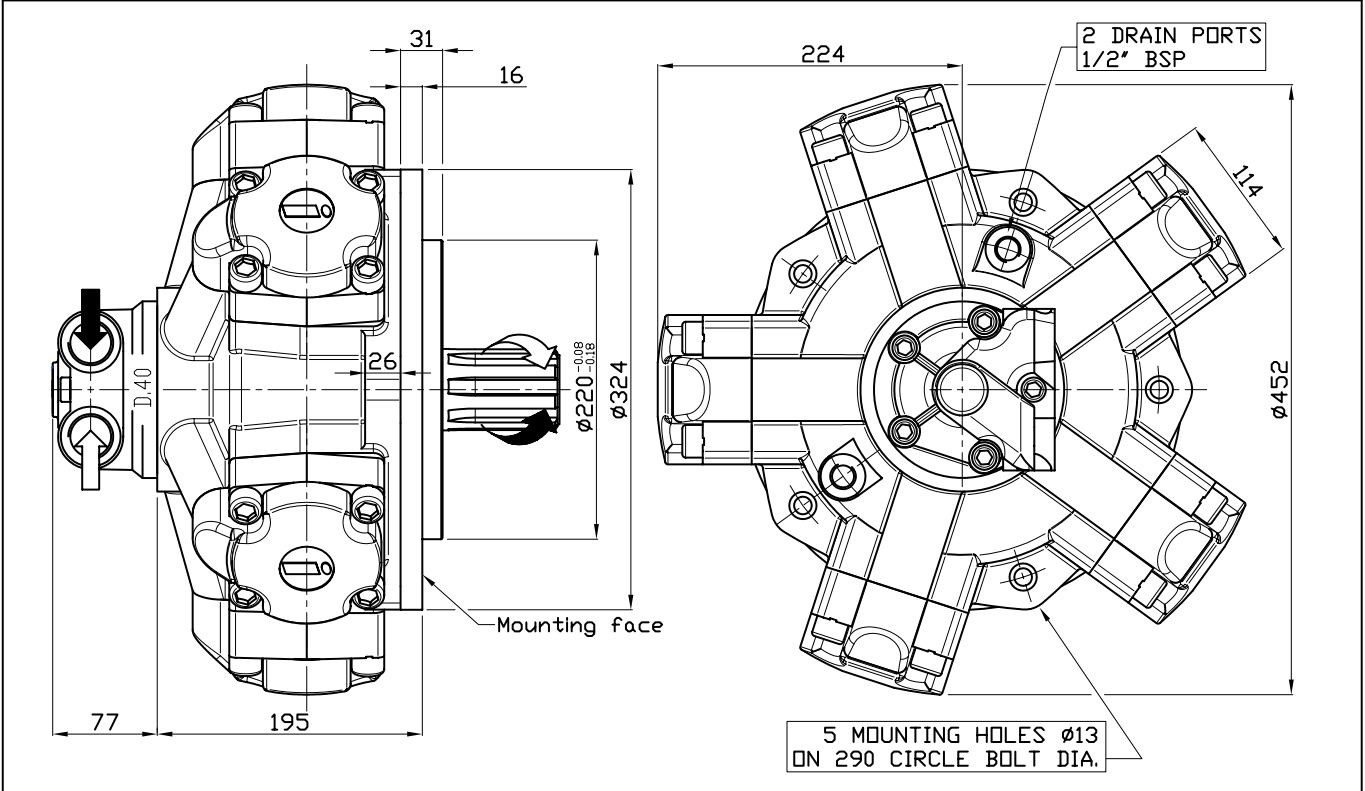


A3: Female shaft on request



## SIZE

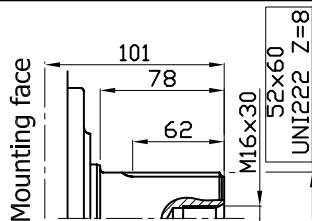
### IAM 700/C-800/C H4



## SHAFT & OPTION

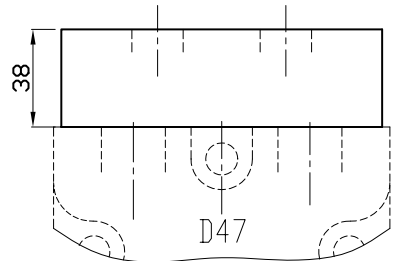
### IAM 700/C-800/C H4

A0: Standard splined shaft

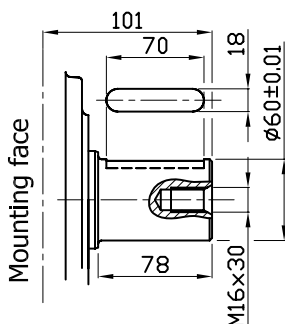


FL2: connection block

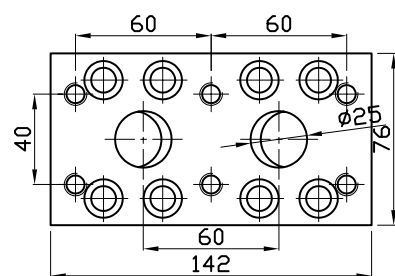
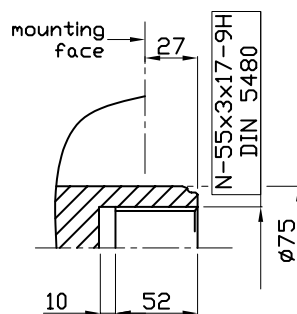
Connection block, fitting D47 distributor, for motor MR 350/450/500/600/700/800



A2: Parallel shaft  
on request



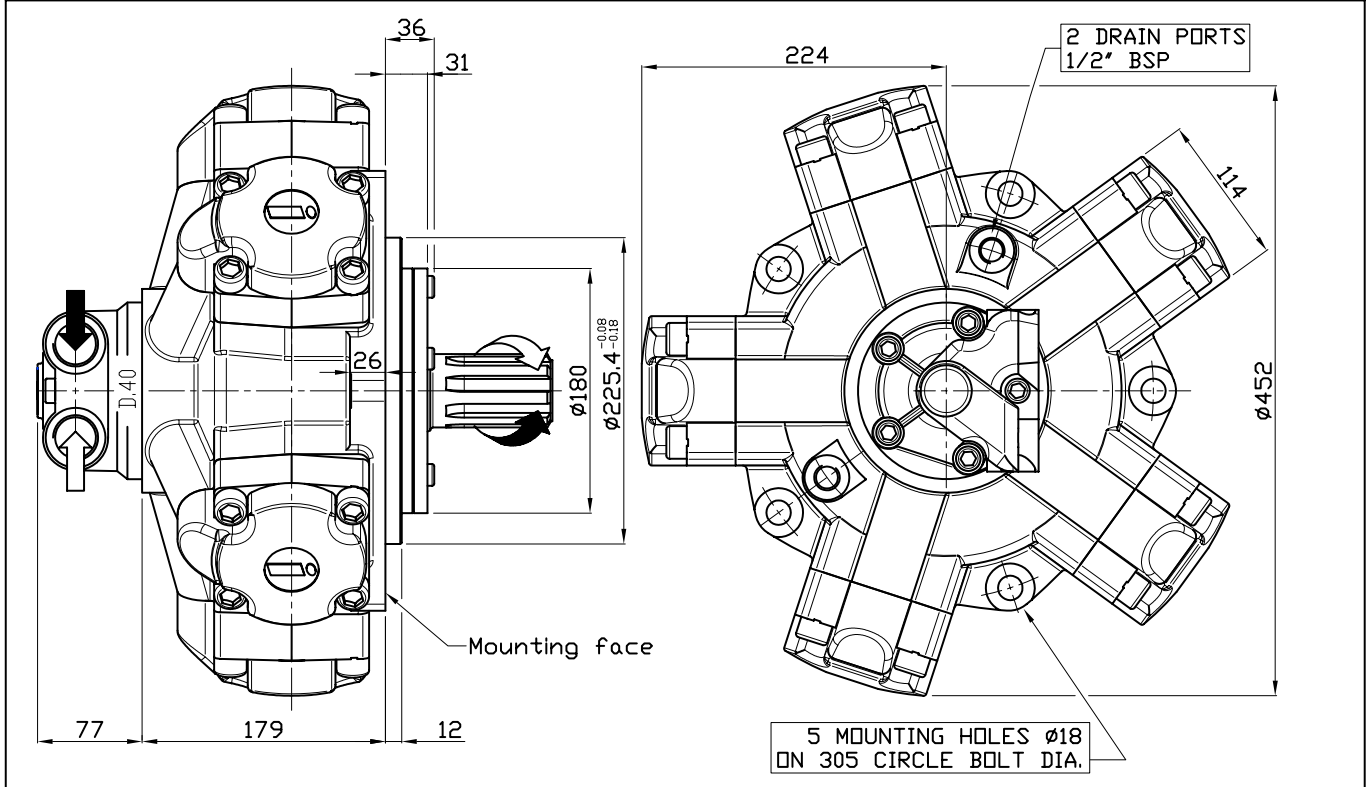
A3: Female shaft  
on request





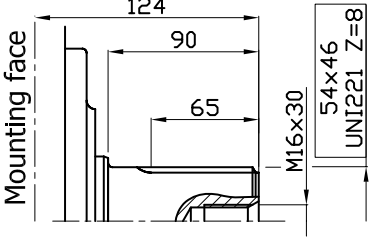
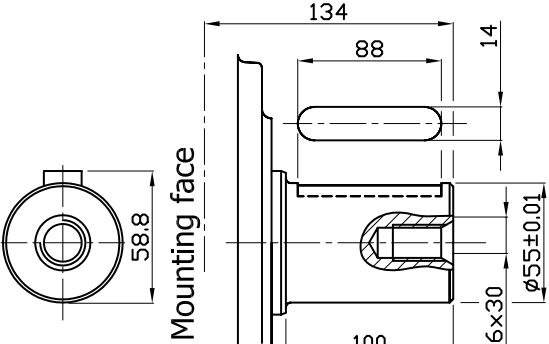
## SIZE

### IAM 800/B45 H4



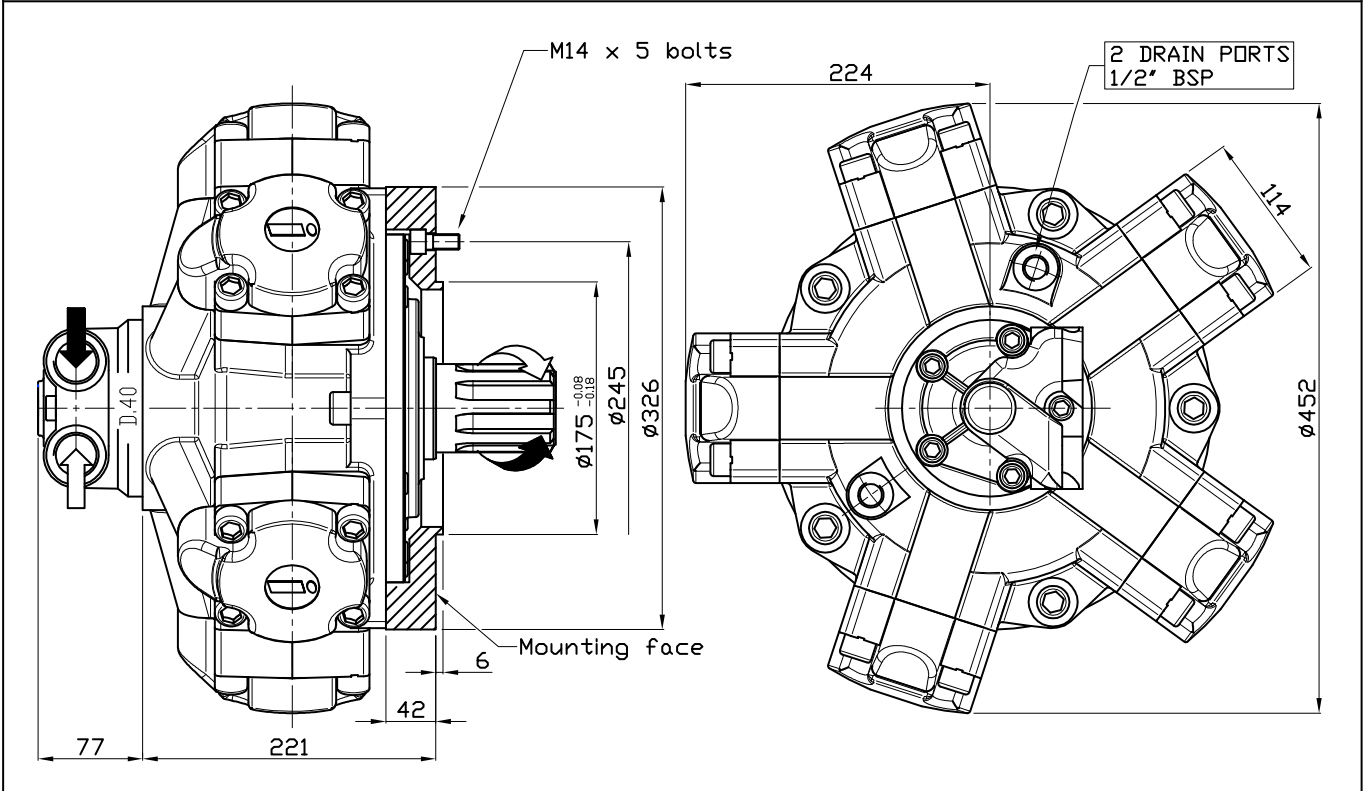
## SHAFT

### IAM 800/B45 H4

A0: Standard splined shaft	A1: Splined shaft on request
	
A2: Parallel shaft on request	A4: Splined shaft on request
	

## SIZE

IAM 700/S 800/S 900/S 1000/S 1100/S 1250/S H4

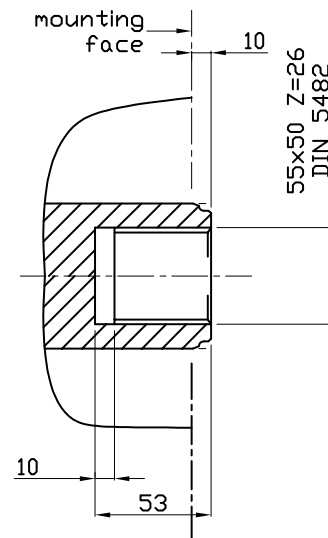
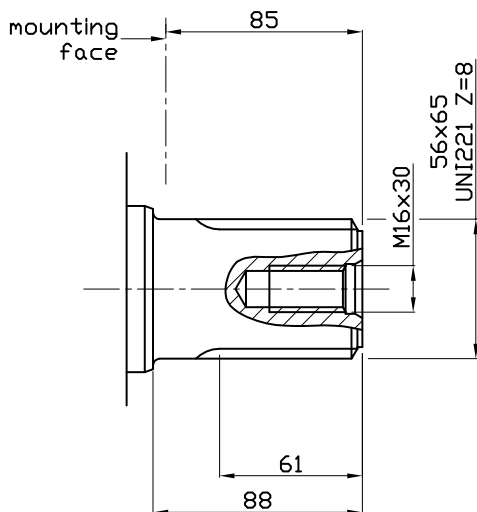


## SHAFT

IAM 700/S 800/S 900/S 1000/S 1100/S 1250/S H4

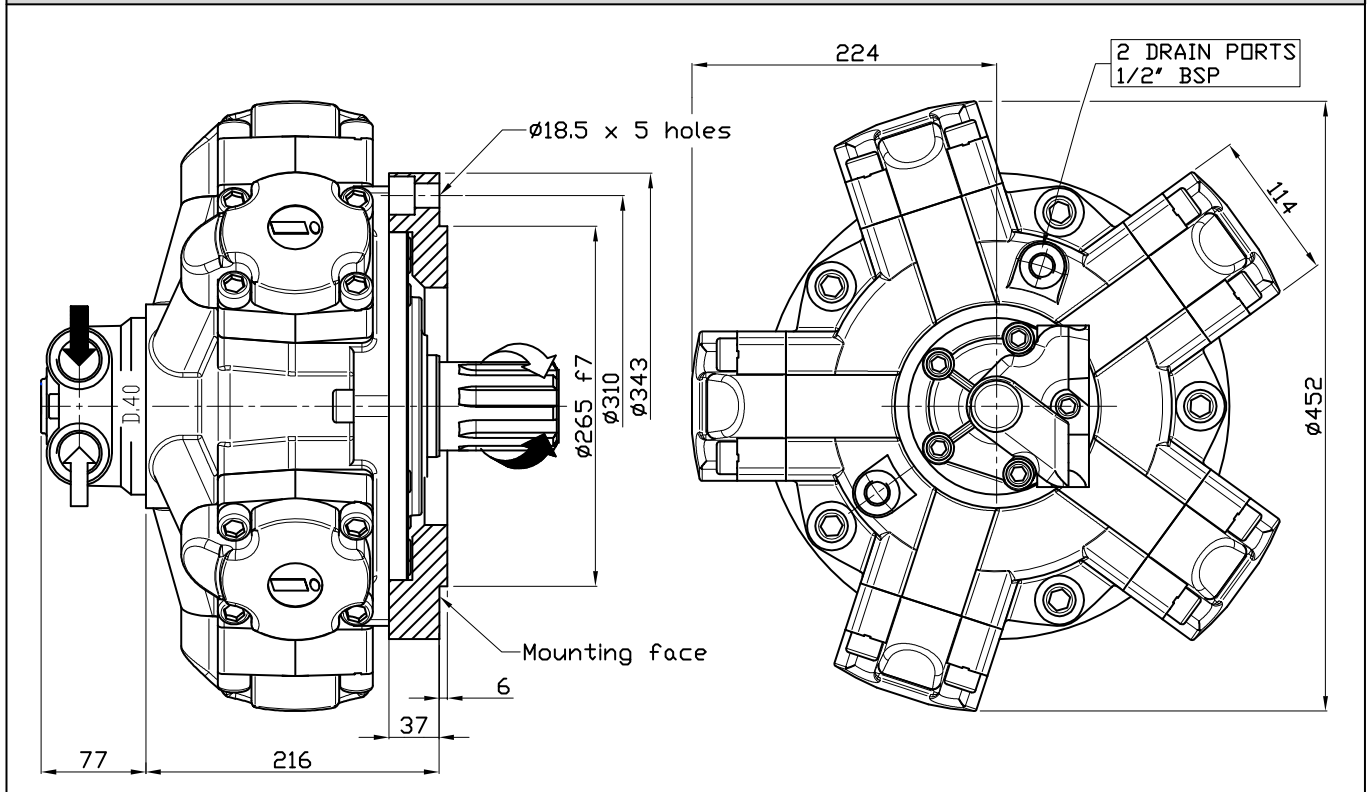
A0: Standard splined shaft

A3: Female shaft on request



## SIZE

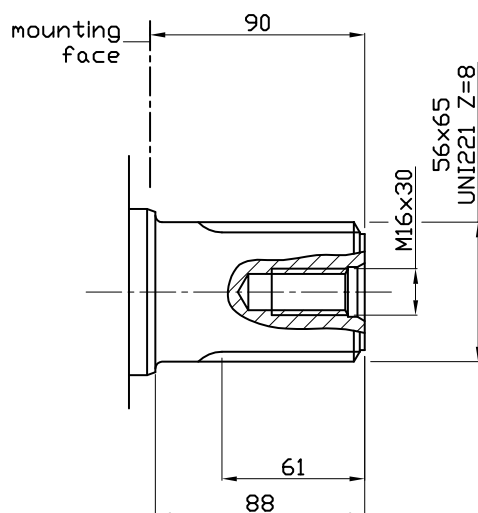
IAM 700/GM4 800/GM4 900/GM4 1000/GM4 1100/GM4 1250/GM4 H4



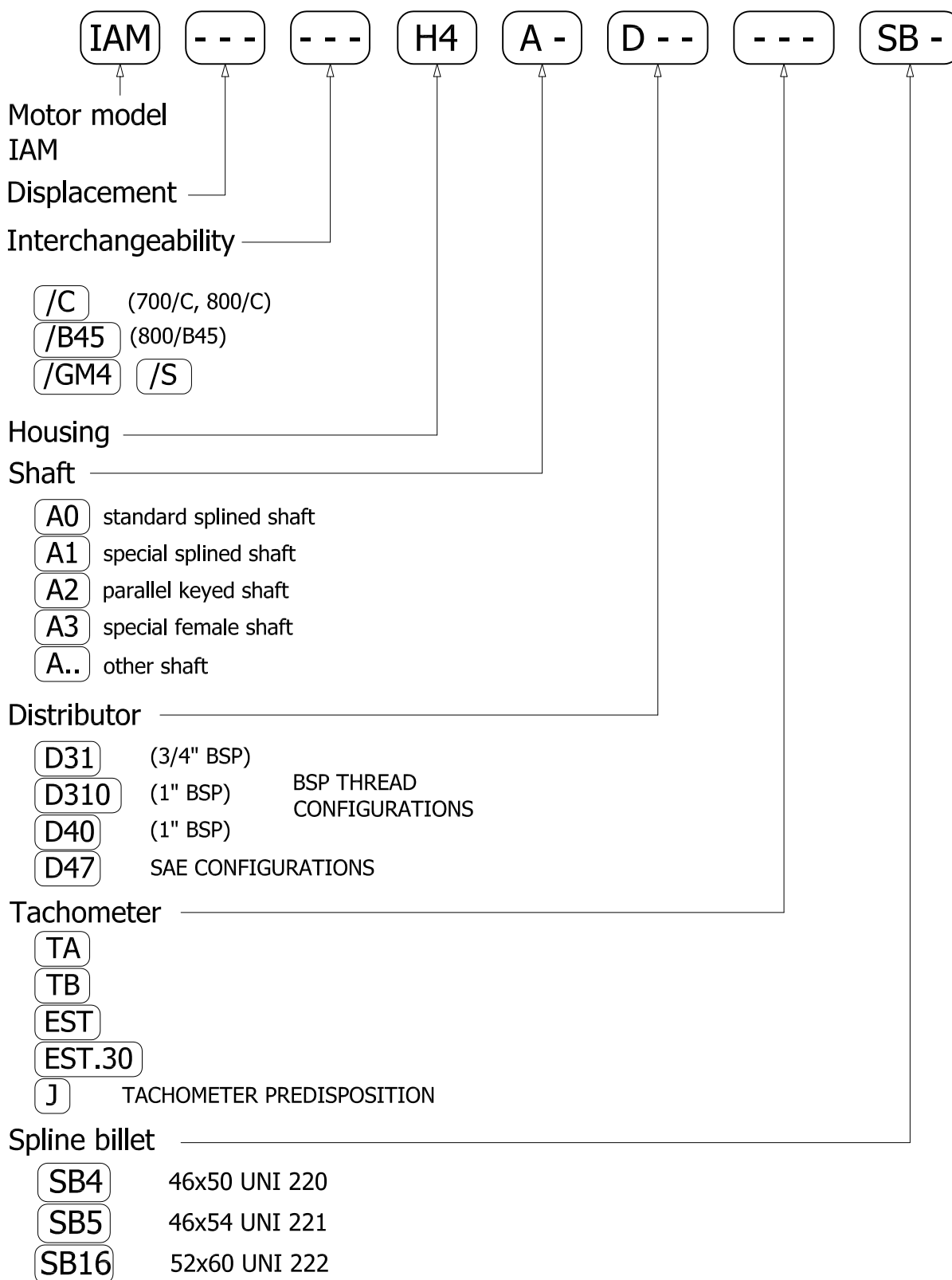
## SHAFT

IAM 700/GM4 800/GM4 900/GM4 1000/GM4 1100/GM4 1250/GM4 H4

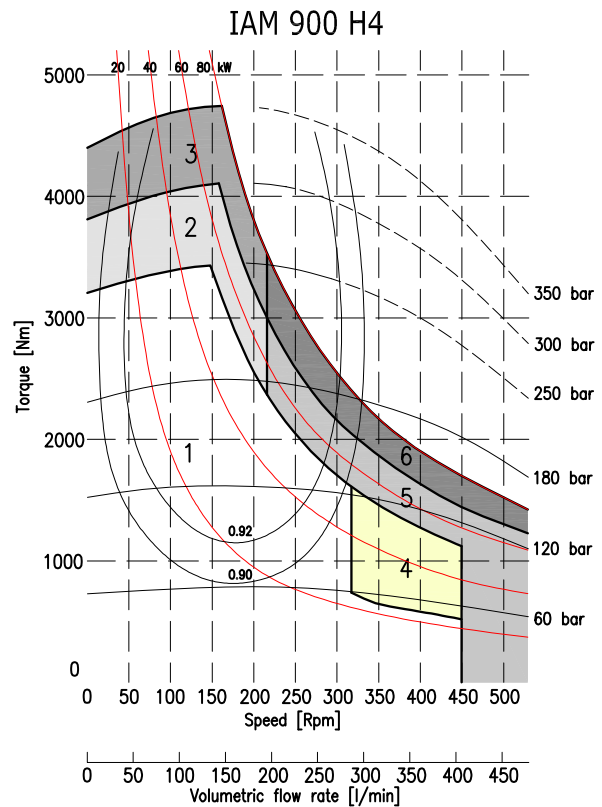
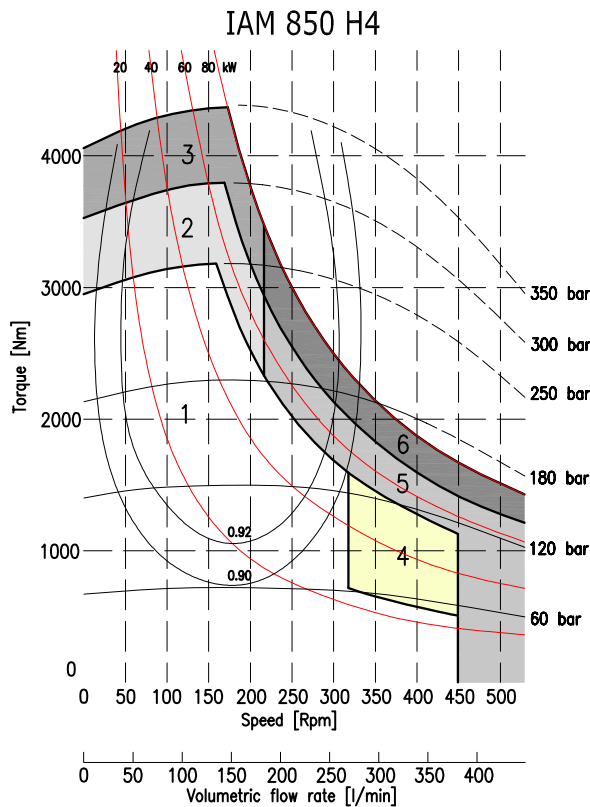
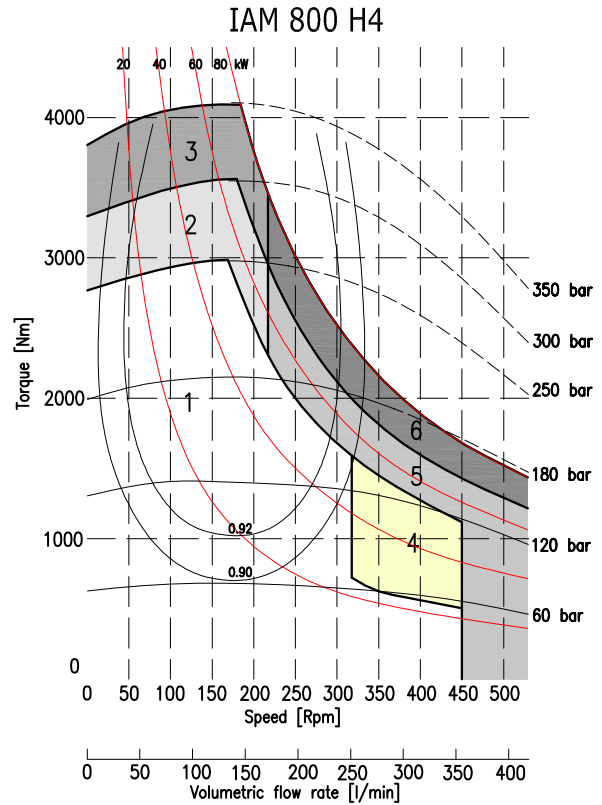
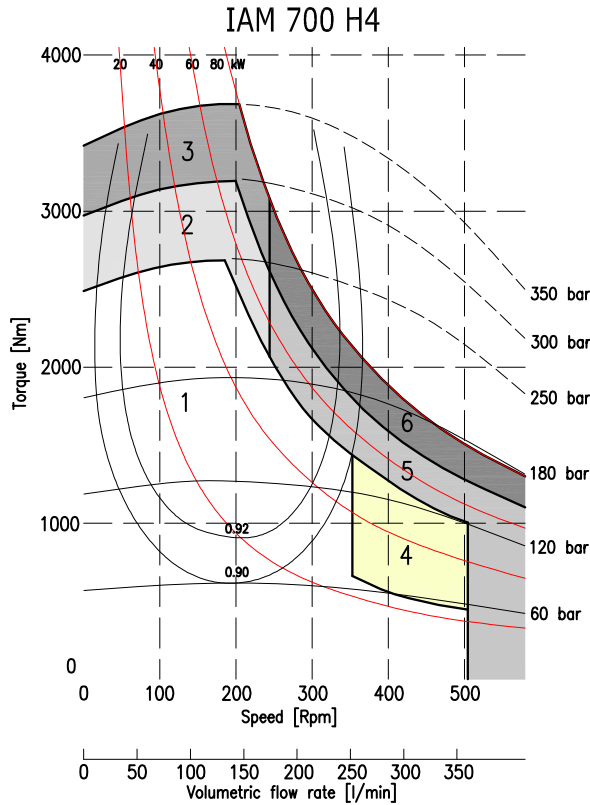
A0: Standard splined shaft



## ORDERING INSTRUCTIONS

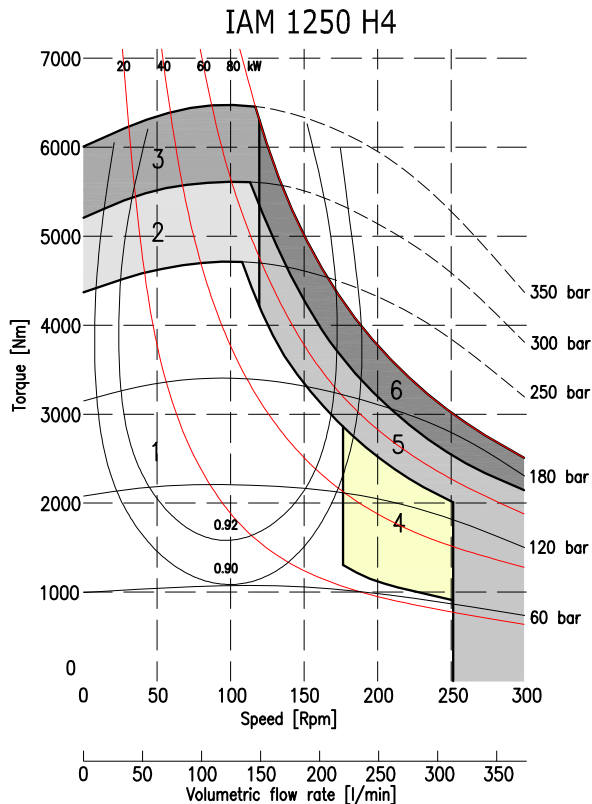
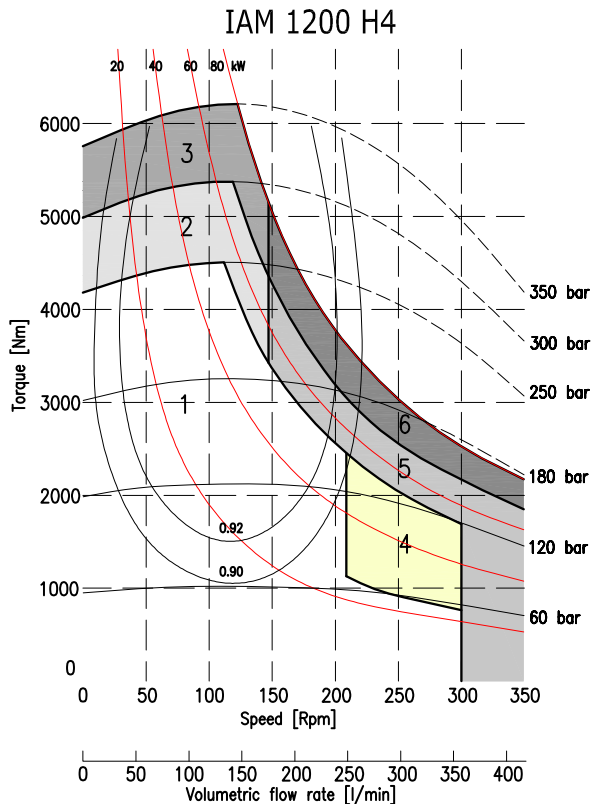
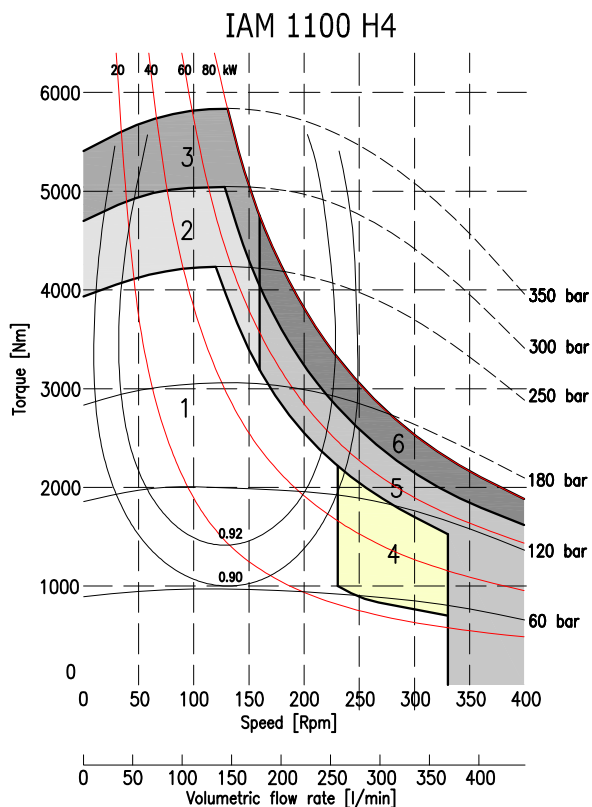
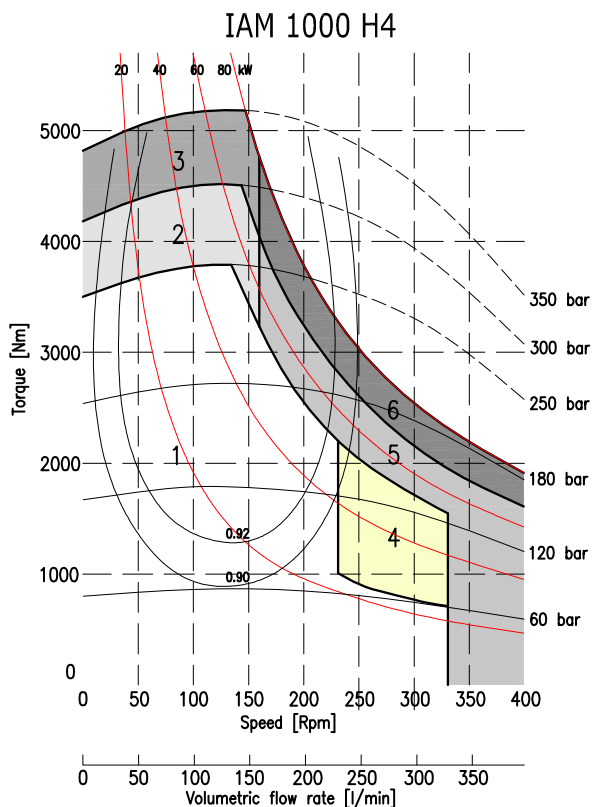


**EXAMPLE:** IAM.700.H4.A1.D40.SB5  
IAM.800/B45.H4.A1.D31.TA  
IAM.700/C.H4.A0.D40.J.SB16



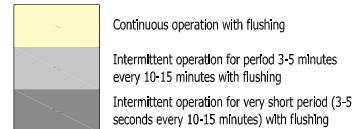
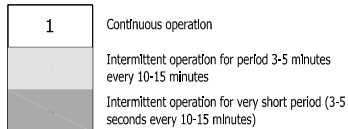
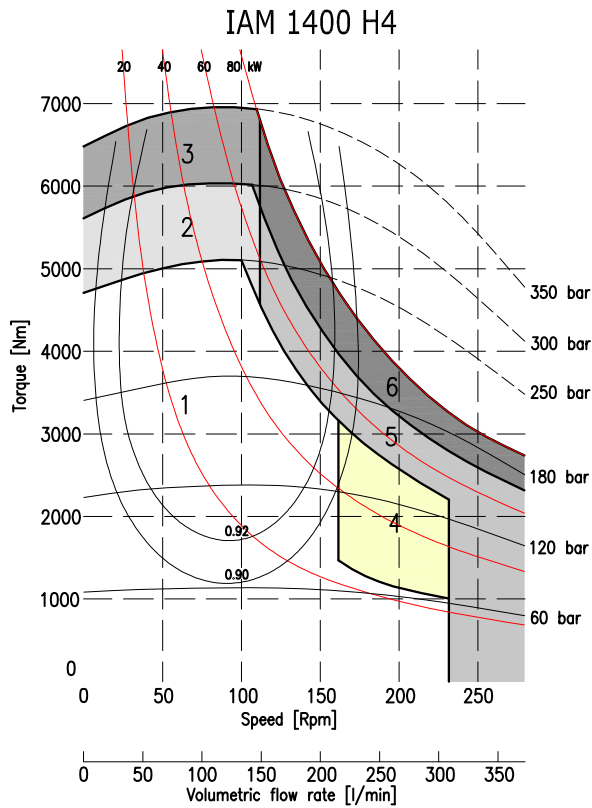
1	Continuous operation
2	Intermittent operation for period 3-5 minutes every 10-15 minutes
3	Intermittent operation for very short period (3-5 seconds every 10-15 minutes)

4	Continuous operation with flushing
5	Intermittent operation for period 3-5 minutes every 10-15 minutes with flushing
6	Intermittent operation for very short period (3-5 seconds every 10-15 minutes) with flushing



1	Continuous operation
2	Intermittent operation for period 3-5 minutes every 10-15 minutes
3	Intermittent operation for very short period (3-5 seconds every 10-15 minutes)

4	Continuous operation with flushing
5	Intermittent operation for period 3-5 minutes every 10-15 minutes with flushing
6	Intermittent operation for very short period (3-5 seconds every 10-15 minutes) with flushing



---

# ***INTERMOT - ADVANCED - MOTORS***

---

## ***IAM SERIES***

---

### ***H45 MODEL***

---

***IAM 1100-1400-1600  
1800 H45***

***IAM 1100-1400/C H45***

---

### ***INDEX***

---

TECHNICAL DATA - - - - -	<i>Pag.</i>	66
IAM H45 1100-1400-1600-1800 - - - - -	"	67
IAM H45 1100-1400/C - - - - -	"	68
ORDERING INSTRUCTIONS - - - - -	"	69
GRAPHIC PERFORMANCES H45 1100-1400-1600-1800 - - - - -	"	70



Factory 19 / 5 Lyn Parade PRESTONS NSW 2170  
Ph: (02) 9607 4100 Fax: (02) 9607 4200



# TECHNICAL DATA *H45*

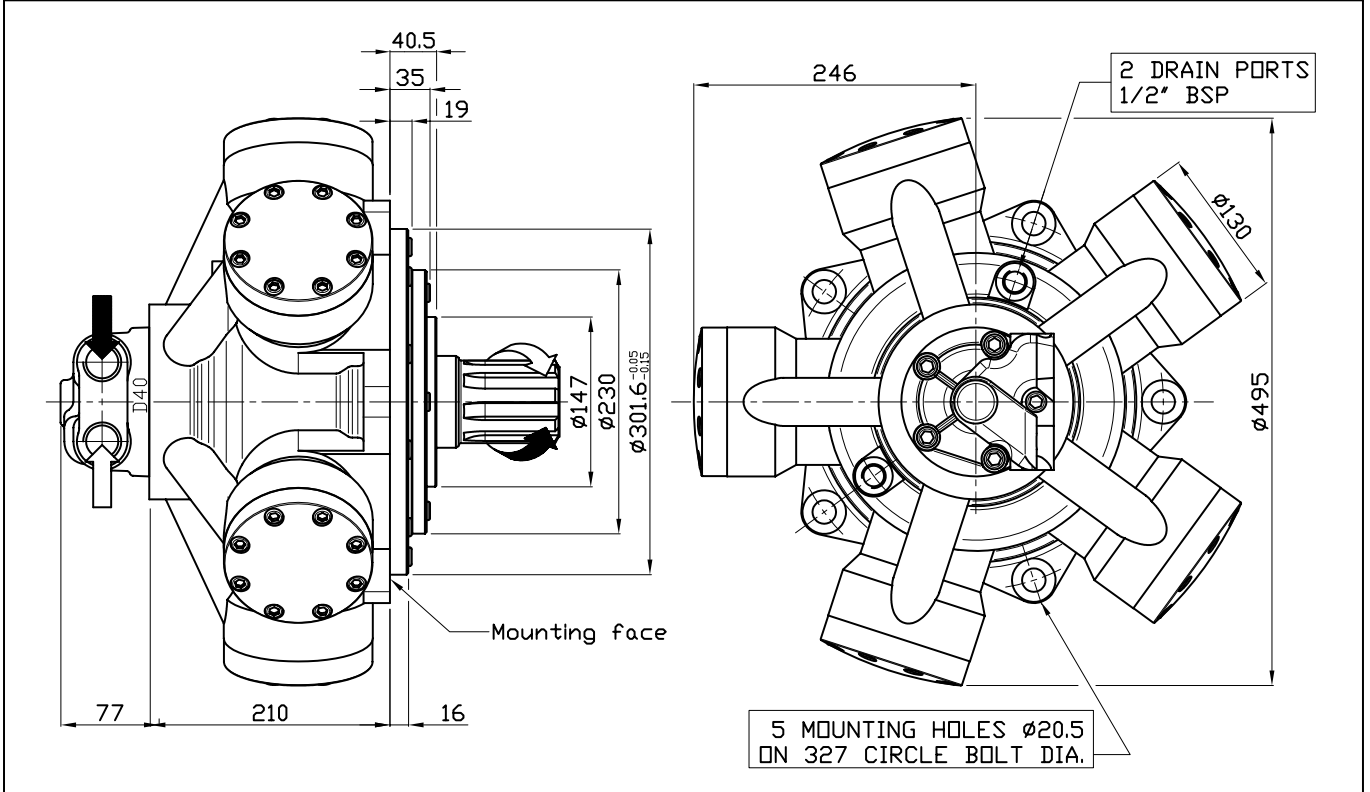
MODEL		IAM 1100 H45	IAM 1400 H45	IAM 1600 H45	IAM 1800 H45
Displacement	cc/rev	1183	1376	1648	1815
Specific Torque	Nm/bar	18.8	21.9	26.2	28.9
Max cont. Pressure	bar	250	250	250	250
Max int. Pressure	bar	300	300	300	300
Peak pressure	bar	350	350	350	350
Max continuous speed	rpm	350	300	275	250
Peak speed	rpm	400	350	325	300
Max continuous power	HP	116	116	116	116
	kW	85	85	85	85
Max power	HP	161	161	161	161
	kW	120	120	120	120

- N° of pistons: 5
- Max case pressure: 6 bar
- Max back pressure: 70 bar
- Dry weight: 118 kg
- Temperature range: -30°C ÷ +70°C
- Minimum speed: 0.5 rpm
- Flushing flow: 10 l/min

(\* )for further details regarding flushing go to page 10 of this catalogue.

## SIZE

### IAM H45 1100-1400-1600-1800

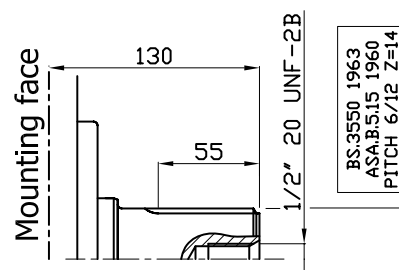
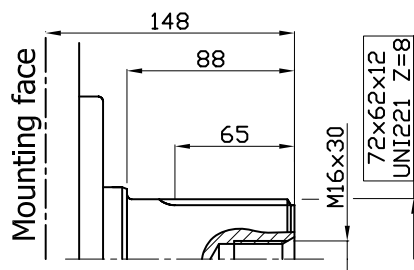


## SHAFT

### IAM H45 1100-1400-1600-1800

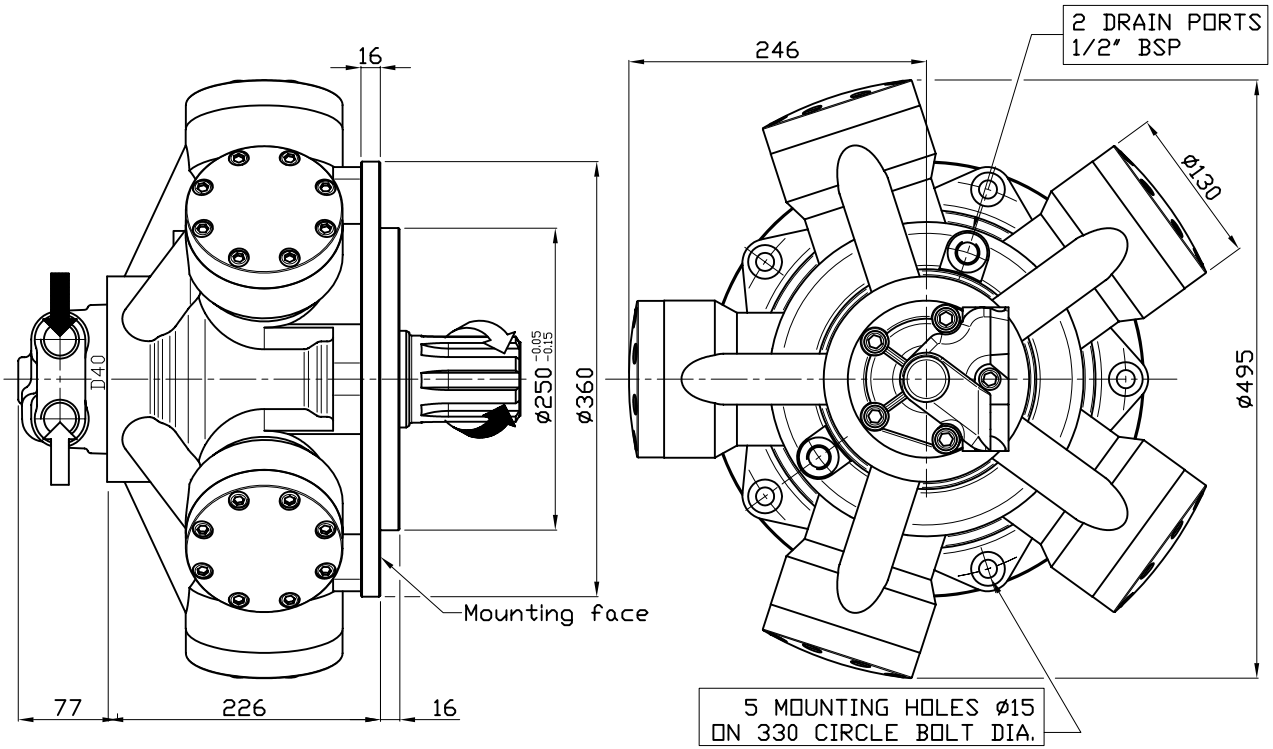
A0: Standard splined shaft

A1: Splined shaft on request



## SIZE

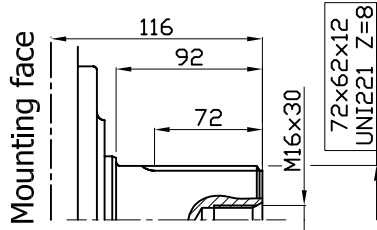
### IAM H45 1100/C -1400/C



## SHAFT & OPTION

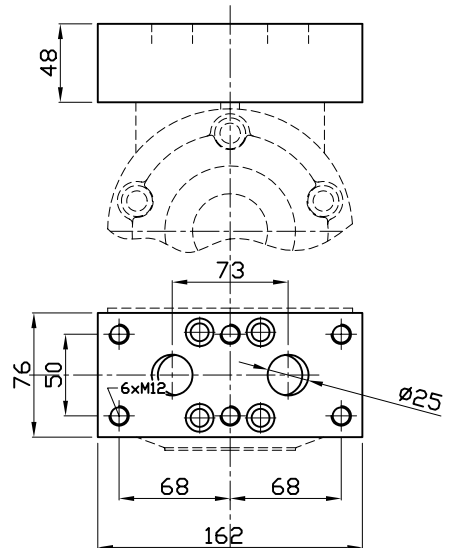
### IAM H45 1100/C -1400/C

A0: Standard splined shaft

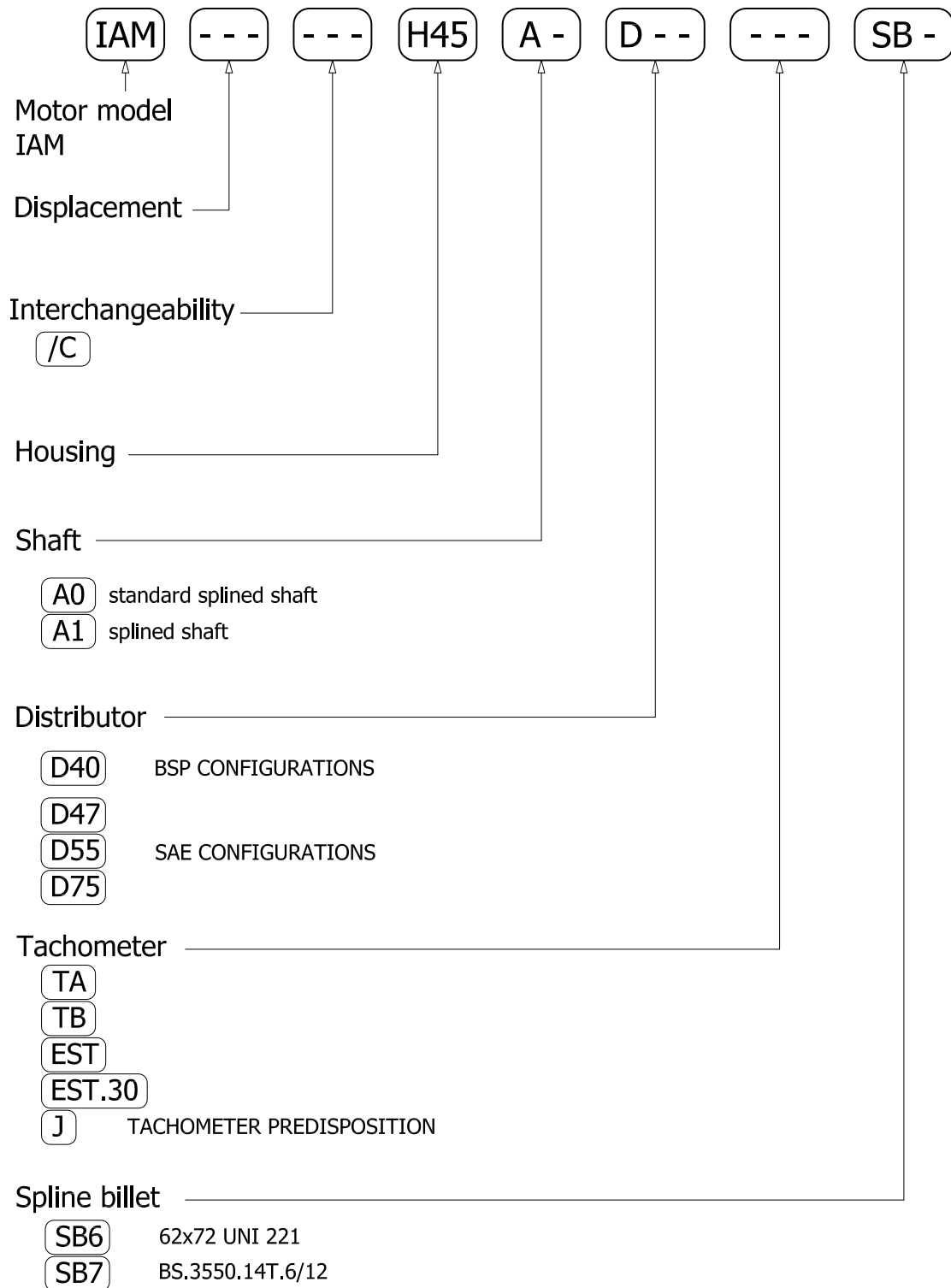


FL3: connection block

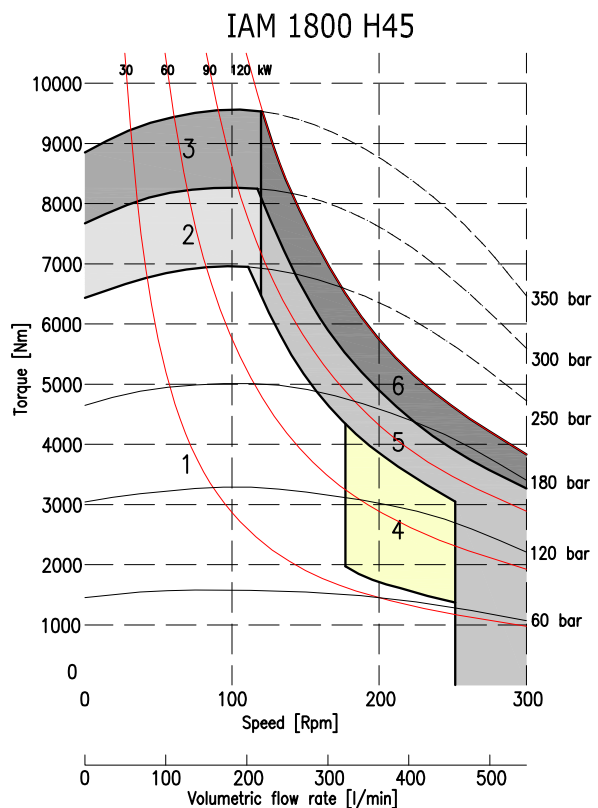
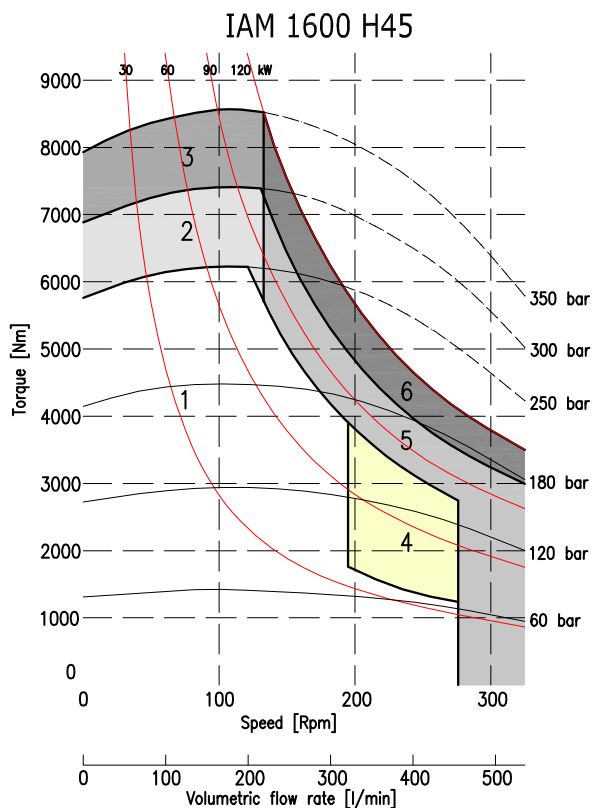
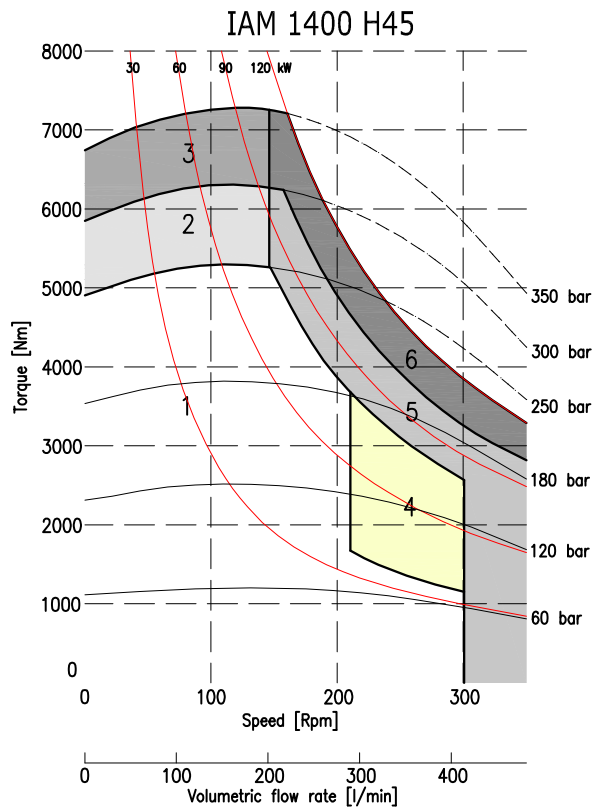
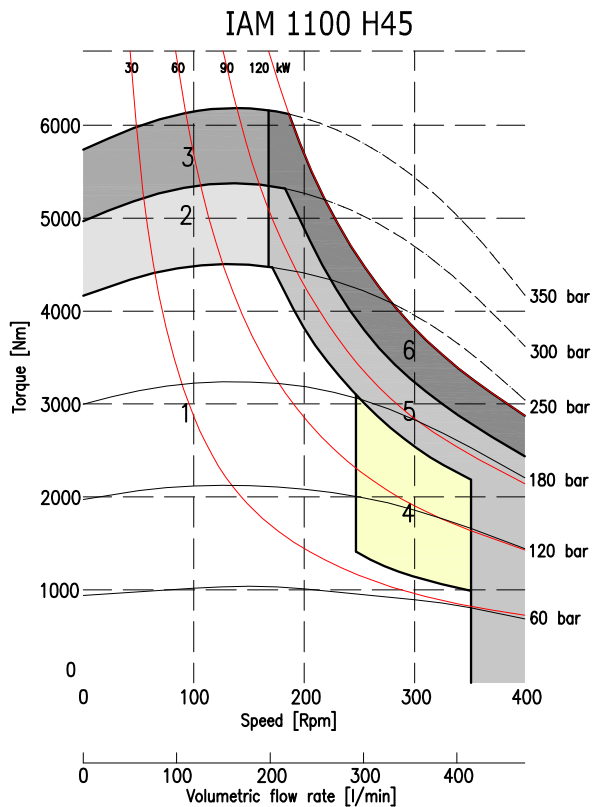
Connection block, fitting D55 distributor, for motor MR 1100/1400/1600/1800/2100



## ORDERING INSTRUCTIONS



**EXAMPLE:** IAM.1100/C.H45.A0.D40  
IAM.1400.H45.A1.D55.TA.SB6  
IAM.1600.H45.A0.D40



1	Continuous operation
2	Intermittent operation for period 3-5 minutes every 10-15 minutes
3	Intermittent operation for very short period (3-5 seconds every 10-15 minutes)

4	Continuous operation with flushing
5	Intermittent operation for period 3-5 minutes every 10-15 minutes with flushing
6	Intermittent operation for very short period (3-5 seconds every 10-15 minutes) with flushing