

---

# **INTERMOT - ADVANCED - MOTORS**

## **IAM SERIES**

---

### **H5 MODEL**

---

**IAM 1000-1200-1400  
1500-1600-1800  
2000-2200 H5**



**IAM 1200-1400-1500/C H5**

**IAM 1600-1800-2000  
2200/C H5**

Factory 19 / 5 Lyn Parade PRESTONS NSW 2170  
Ph: (02) 9607 4100 Fax: (02) 9607 4200

**IAM 1000/B60 - 1400/B80  
1600/B100 H5**

**IAM 1000-1200-1400  
1500-1600-1800  
2000-2200 H5**

---

### **INDEX**

TECHNICAL DATA - - - - -	<i>Pag.</i>	72
IAM H5 1000-1200-1400-1500-1600-1800-2000-2200 - - - - -	"	73
IAM H5 1200-1400-1500/C - - - - -	"	74
IAM H5 1600-1800-2000-2200/C - - - - -	"	75
IAM H5 1000/B60-1400/B80-1600/B100 - - - - -	"	76
IAM H5 1000-1200-1400-1500-1600-1800-2000-2200/GM5 (S) - - - - -	"	77
ORDERING INSTRUCTIONS - - - - -	"	78
GRAPHIC PERFORMANCES H5 1000-1200-1400-1500 - - - - -	"	79
GRAPHIC PERFORMANCES H5 1600-1800-2000-2200 - - - - -	"	80

---

# TECHNICAL DATA

# H5

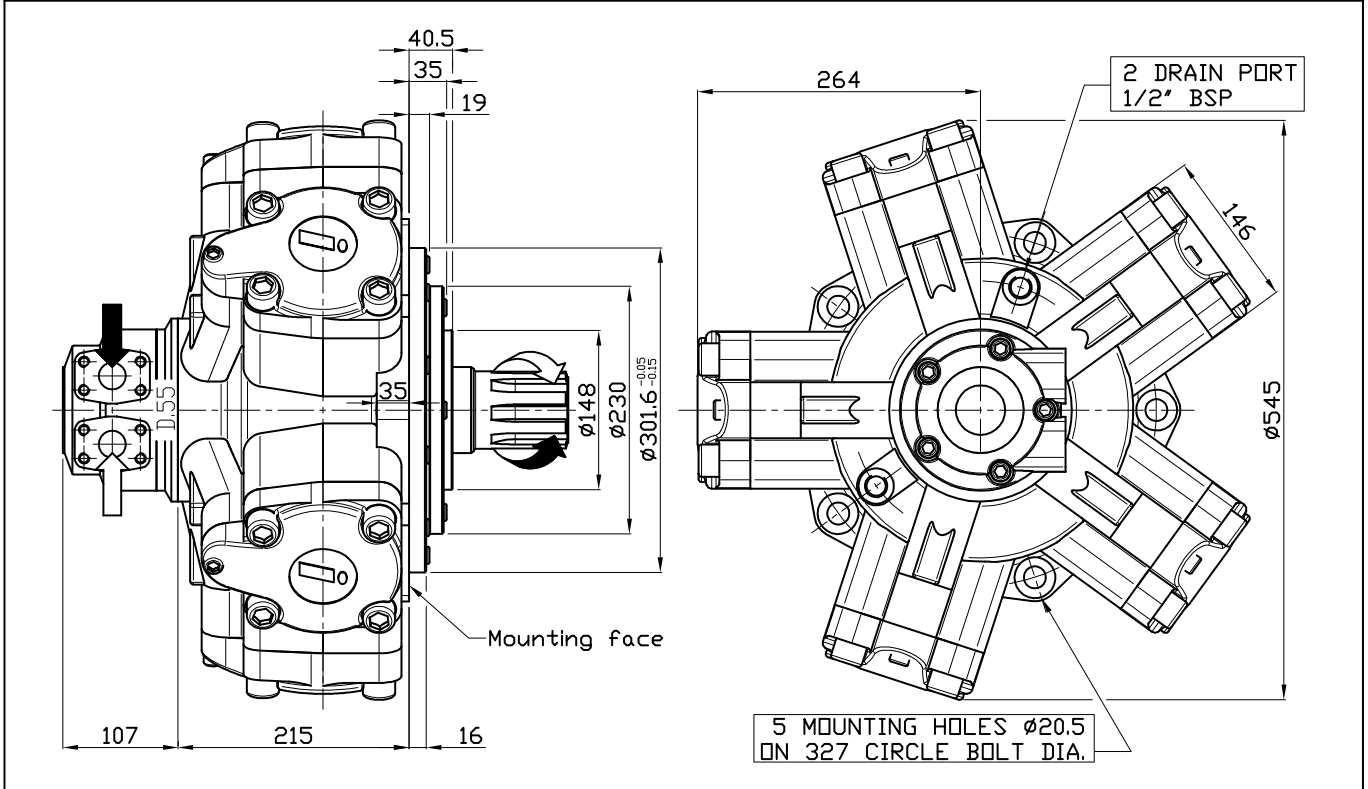
MODEL		IAM 1000 H5	IAM 1200 H5	IAM 1400 H5	IAM 1500 H5	IAM 1600 H5	IAM 1800 H5	IAM 2000 H5	IAM 2200 H5
Displacement	cc/rev	1094	1231	1376	1528	1648	1815	2035	2220
Specific Torque	Nm/bar	17.4	19.6	21.9	24.3	26.2	28.9	32.4	35.3
Max cont. Pressure	bar	250	250	250	250	250	250	250	250
Max int. Pressure	bar	300	300	300	300	300	300	300	300
Peak pressure	bar	350	350	350	350	350	350	350	350
Max continuous speed	rpm	350	300	300	300	300	250	230	220
Peak speed	rpm	400	350	350	350	340	300	260	240
Max continuous power	HP	122	122	122	122	122	122	122	122
	kW	90	90	90	90	90	90	90	90
Max power	HP	161	161	161	161	161	161	161	161
	kW	120	120	120	120	120	120	120	120

- N° of pistons: 5
- Max case pressure: 6 bar
- Max back pressure: 70 bar
- Dry weight: 173 kg
- Temperature range: -30°C ÷ +70°C
- Minimum speed: 0.5 rpm
- Flushing flow: 10 l/min

(\*)for further details regarding flushing go to page 10 of this catalogue.

## SIZE

IAM 1000-1200-1400-1500-1600-1800-2000-2200 H5



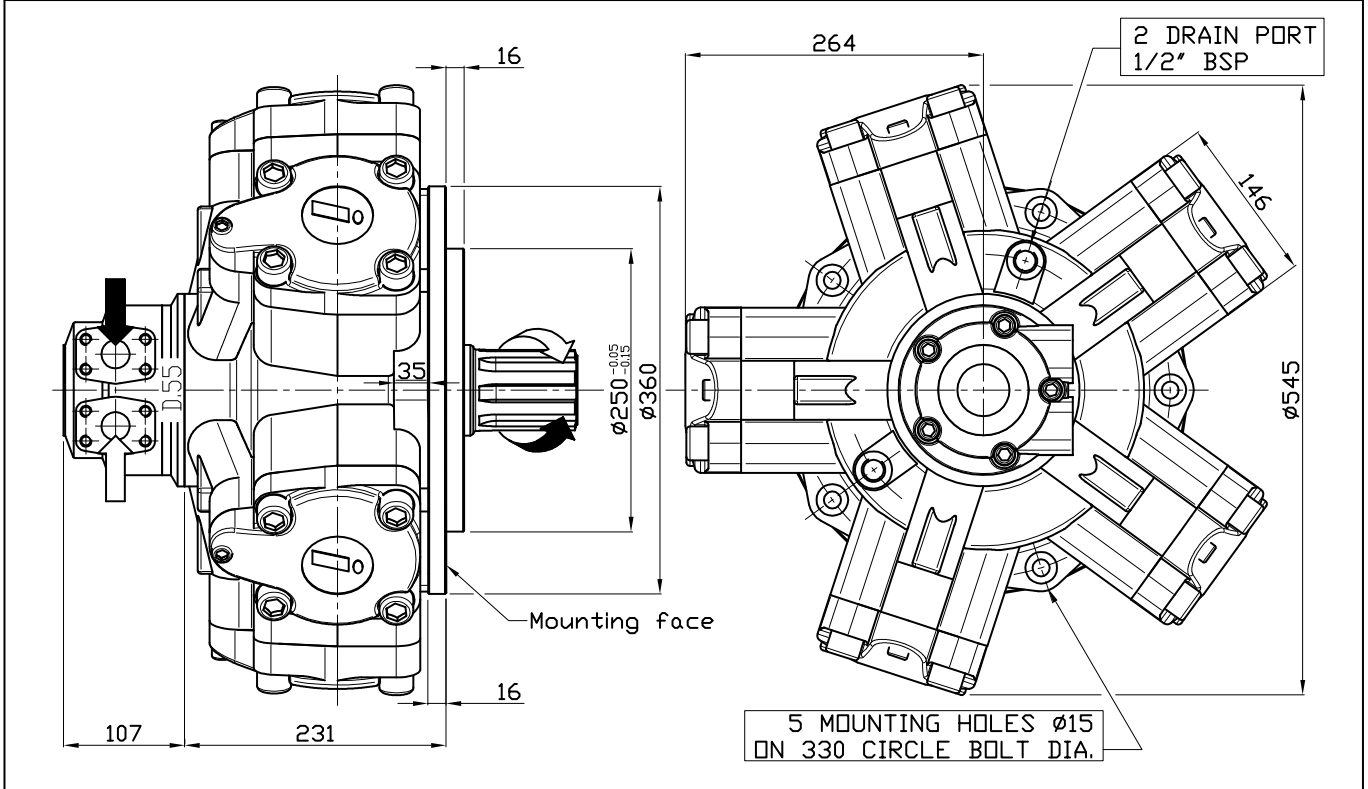
## SHAFT

IAM 1000-1200-1400-1500-1600-1800-2000-2200 H5

A0: Standard splined shaft	A1: Splined shaft on request
<p>Technical drawing of standard splined shaft A0. Dimensions: 148, 88, 65, 171, 90, 18, 111, 62.4, <math>\phi 60 \pm 0.01</math>. Labels: 'Mounting face', 'M16x30', '72x62x12 UN1221 Z=8'.</p>	<p>Technical drawing of splined shaft A1. Dimensions: 132, 72, 55. Labels: 'Mounting face', '1/2" 20 UNF -2B', 'BS.3550 1963 ASA.B.5.15 1960 PITCH 6/12 Z=14'.</p>
A2: Parallel shaft on request	A3: Female shaft on request
<p>Technical drawing of parallel shaft A2. Dimensions: 171, 90, 18, 111, 62.4, <math>\phi 60 \pm 0.01</math>. Labels: 'Mounting face', '1/2" -20 UNF -2B'.</p>	<p>Technical drawing of female shaft A3. Dimensions: 55, 10, 43, <math>\phi 80</math>. Labels: 'mounting face', 'N55x3x17-9H DIN 5480'.</p>

## SIZE

### IAM 1200/C-1400/C-1500/C H5



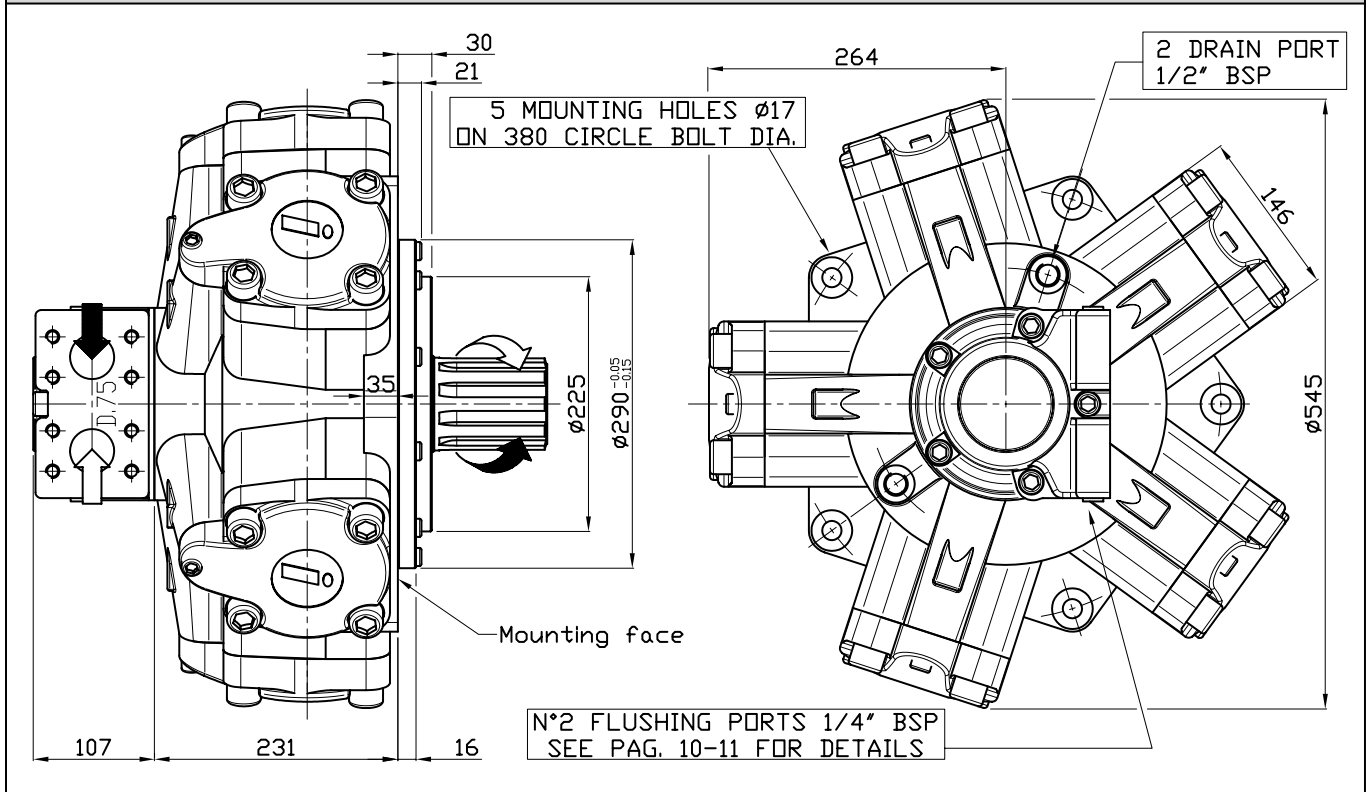
## SHAFT & OPTION

### IAM 1200/C-1400/C-1500/C H5

A0: Standard splined shaft	A1: Splined shaft on request	FL3: connection block
<p>Mounting face</p>	<p>Mounting face</p>	<p>Connection block, fitting D55 distributor, for motor MR 1100/1400/1600/1800/2100</p>
<p>A2: Parallel shaft on request</p>	<p>A3: Female shaft on request</p>	

## SIZE

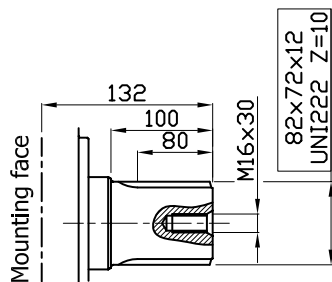
### IAM 1600/C-1800/C-2000/C-2200/C H5



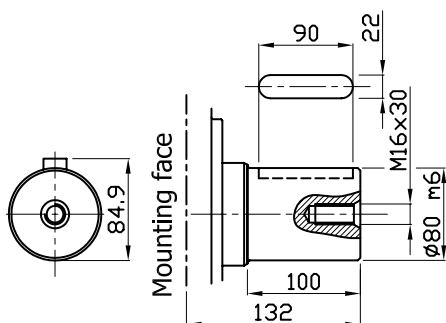
## SHAFT & OPTION

### IAM 1600/C-1800/C-2000/C-2200/C H5

A0: Standard splined shaft

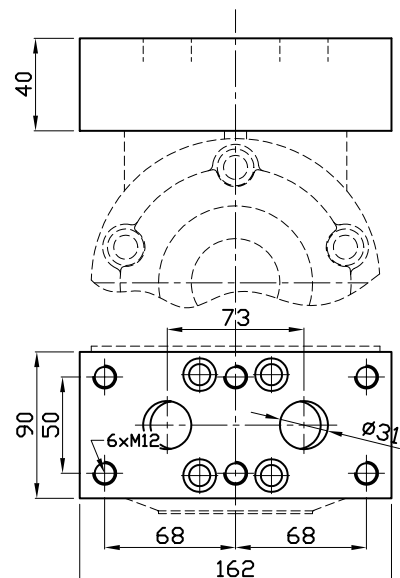


A2: Parallel shaft on request



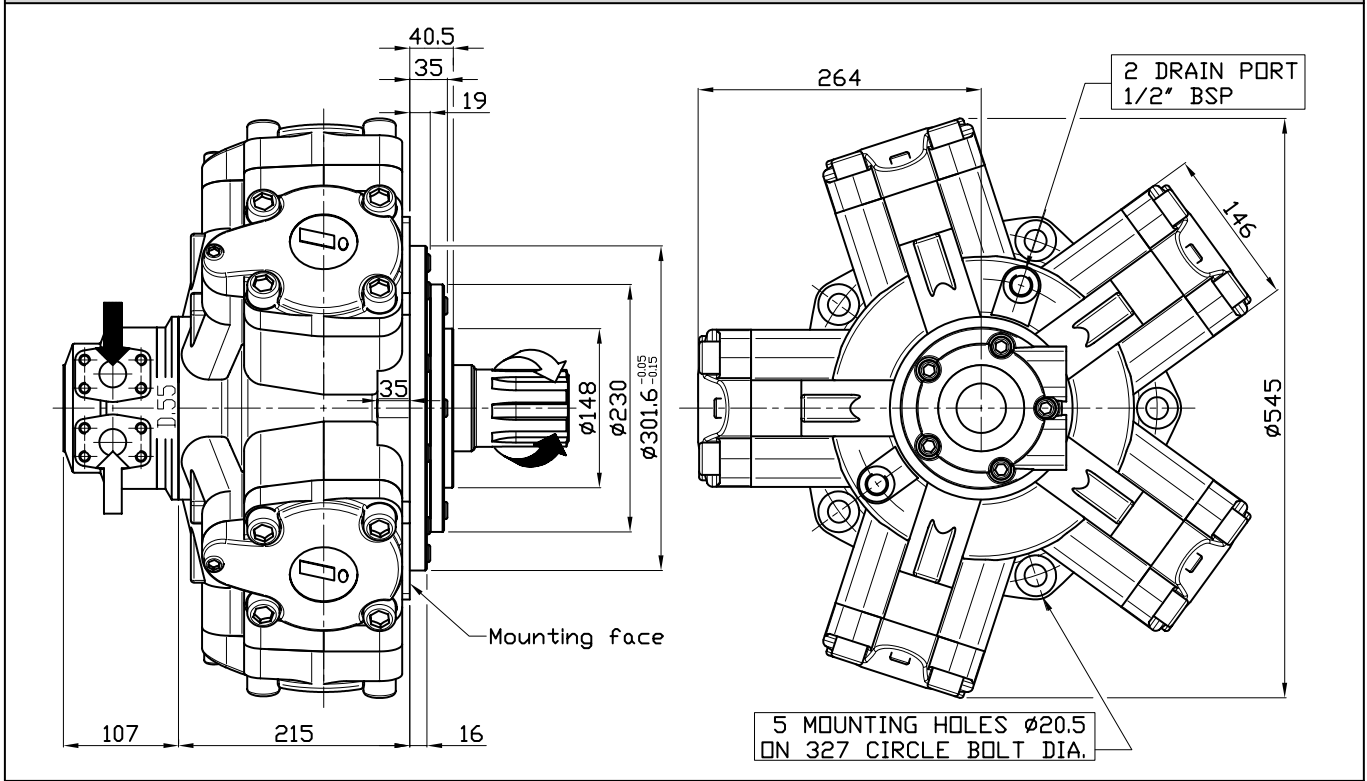
FL4: connection block

Connection block, fitting D75 distributor, for motor MR 1100/1400/1600/1800/2100



## SIZE

### IAM 1000/B60-1400/B80-1600/B100 H5



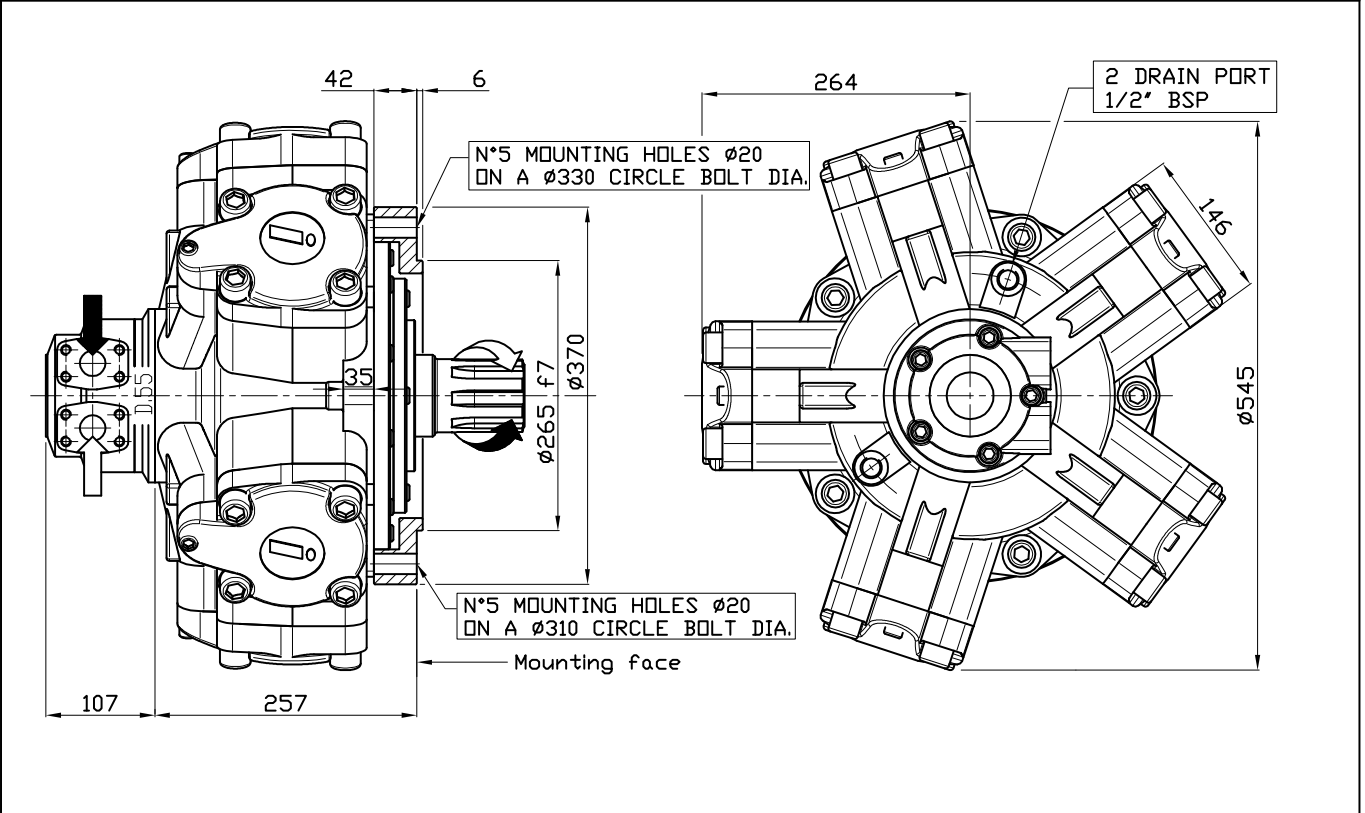
## SHAFT & OPTION

### IAM 1000/B60-1400/B80-1600/B100 H5

A1: Standard splined shaft	FL5: connection block	FL6: connection block
<p>A2: Parallel shaft on request</p>		

## SIZE

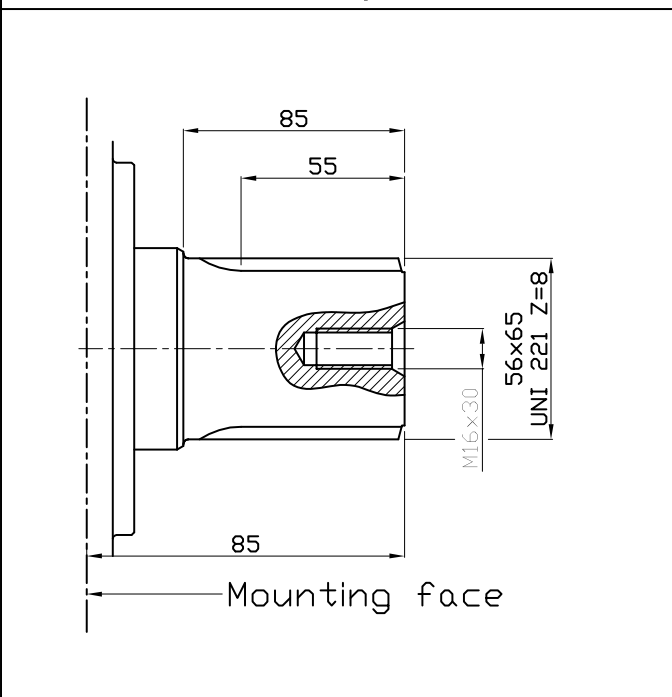
IAM H5 1000/GM5-1200/GM5-1400/GM5-1500/GM5  
1600/GM5-1800/GM5-2000/GM5-2200/GM5 (S)



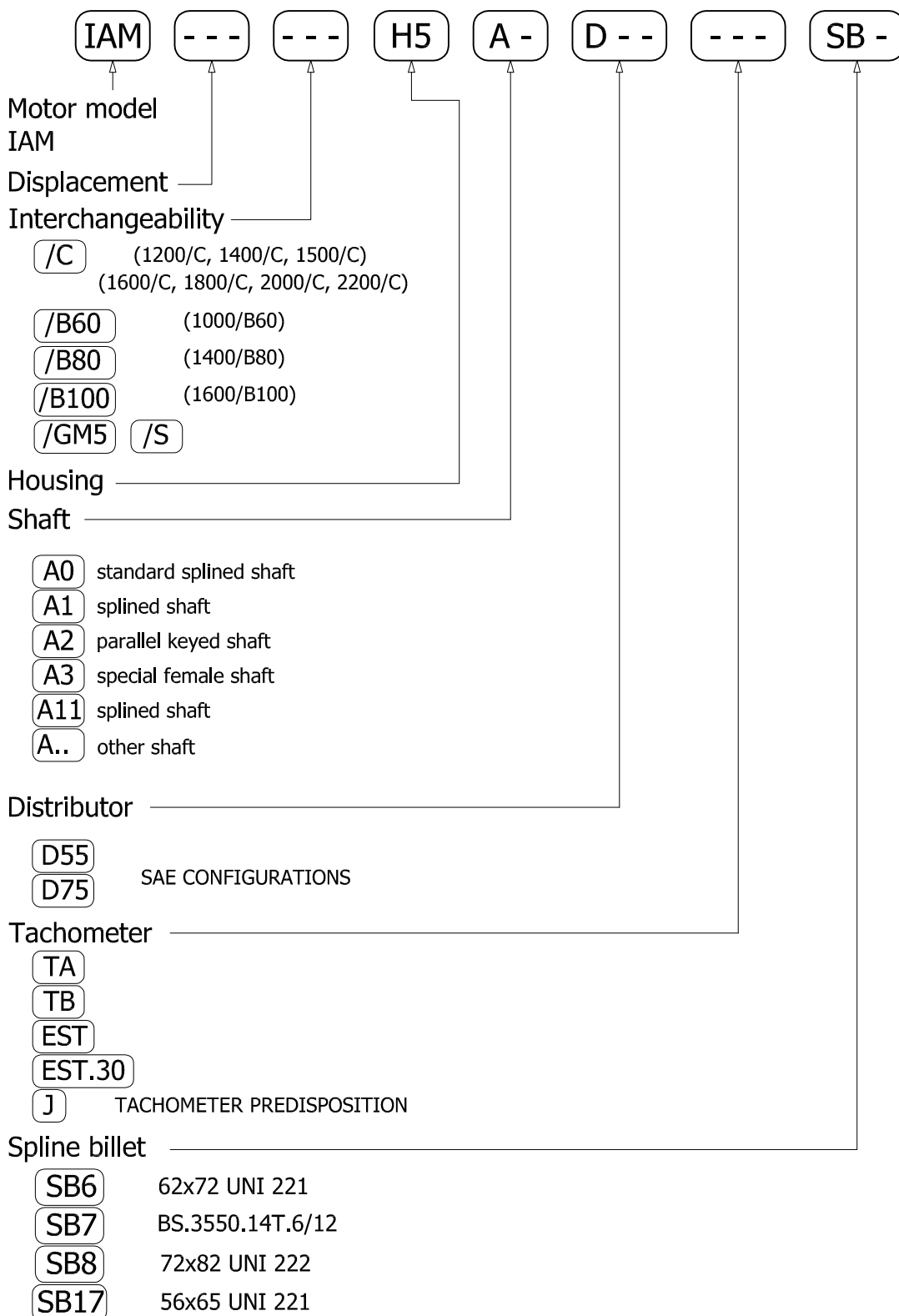
## SHAFT

IAM H5 1000/GM5-1200/GM5-1400/GM5-1500/GM5  
1600/GM5-1800/GM5-2000/GM5-2200/GM5 (S)

**A0: Standard splined shaft**

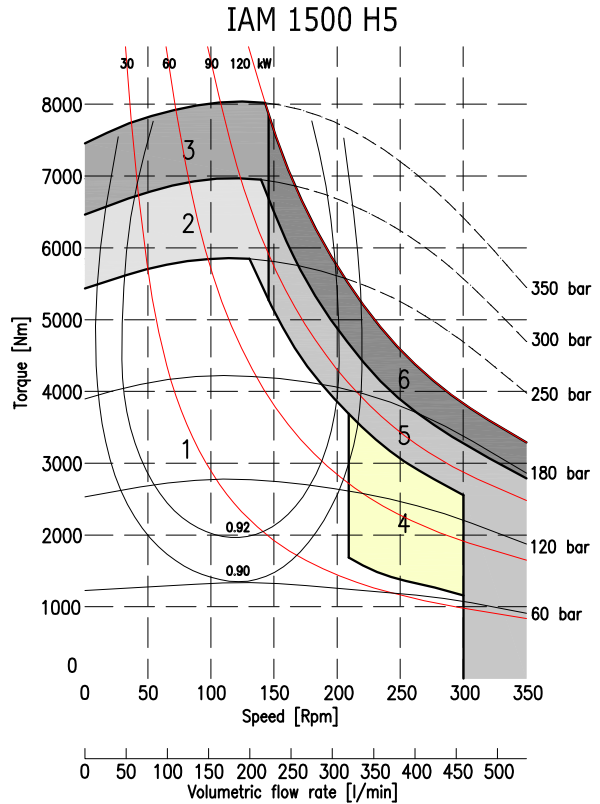
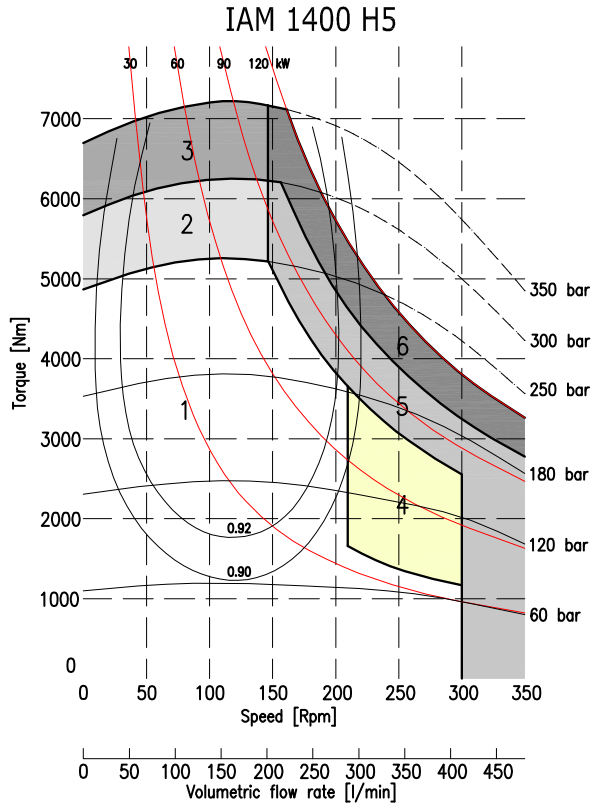
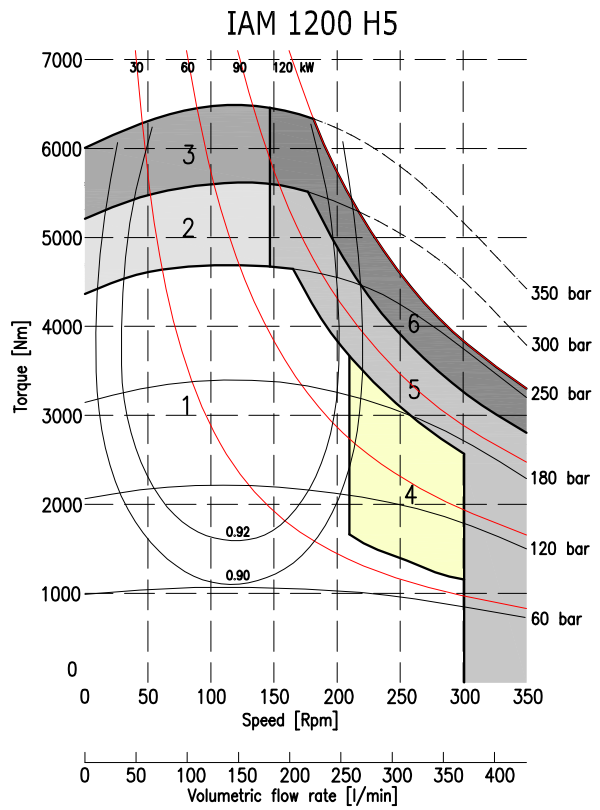
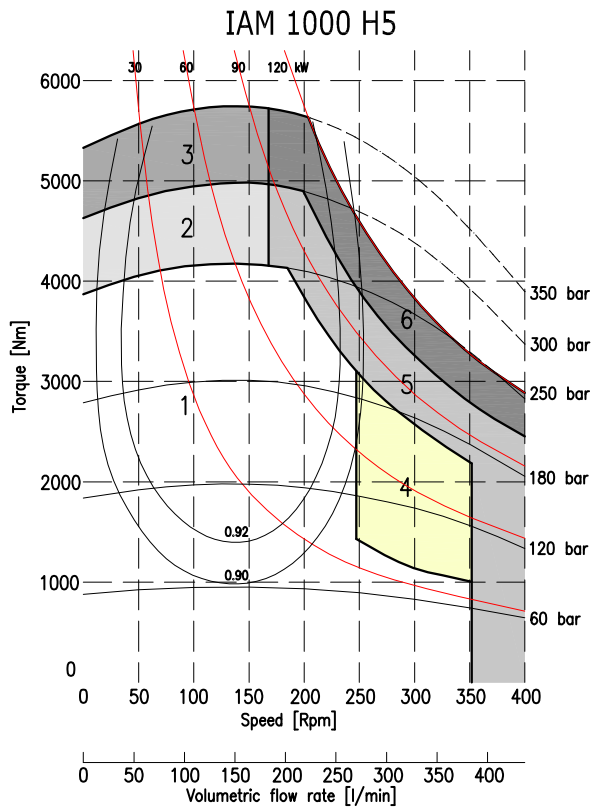


## ORDERING INSTRUCTIONS



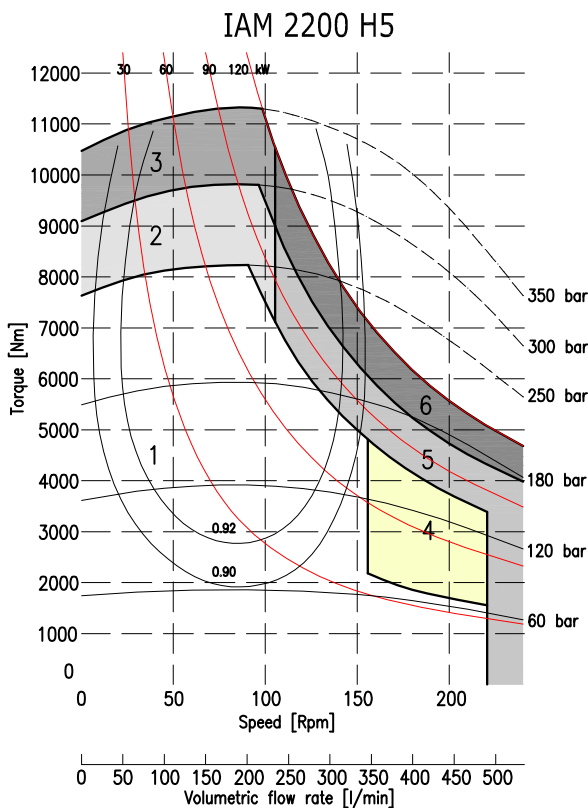
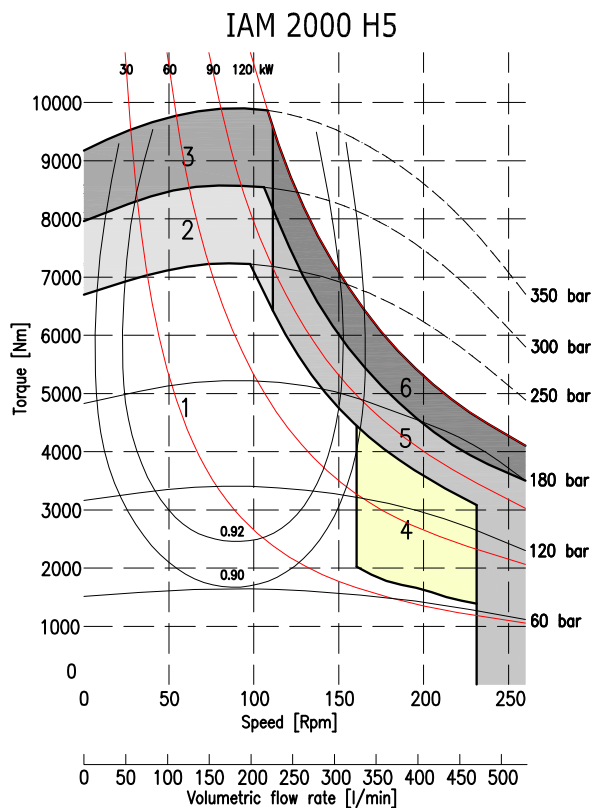
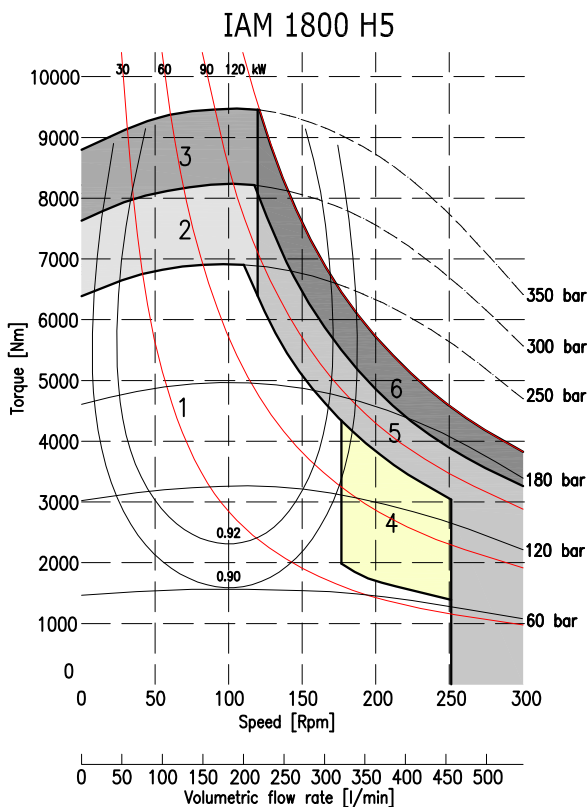
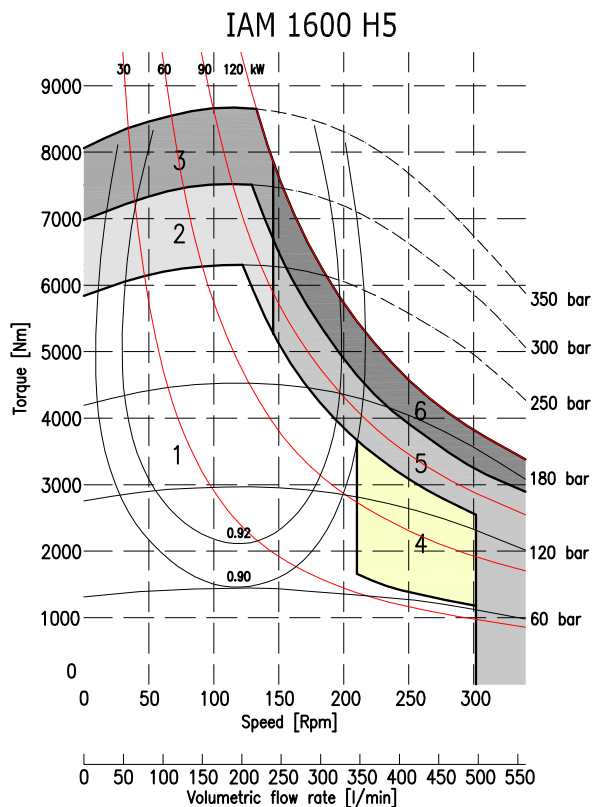
**EXAMPLE:** IAM.1200.H5.A1.D55  
IAM.1600.H5.A0.D75.TA.SB6  
IAM.1800/C.H5.A0.D75.EST30.SB8





1	Continuous operation
2	Intermittent operation for period 3-5 minutes every 10-15 minutes
3	Intermittent operation for very short period (3-5 seconds every 10-15 minutes)

4	Continuous operation with flushing
5	Intermittent operation for period 3-5 minutes every 10-15 minutes with flushing
6	Intermittent operation for very short period (3-5 seconds every 10-15 minutes) with flushing



1	Continuous operation
2	Intermittent operation for period 3-5 minutes every 10-15 minutes
3	Intermittent operation for very short period (3-5 seconds every 10-15 minutes)

4	Continuous operation with flushing
5	Intermittent operation for period 3-5 minutes every 10-15 minutes with flushing
6	Intermittent operation for very short period (3-5 seconds every 10-15 minutes) with flushing

---

# ***INTERMOT - ADVANCED - MOTORS***

---

## ***IAM SERIES***

---

### ***H55 MODEL***

---

***IAM 2200-2500-2800 H55***

***IAM 2500-2800-3000/C H55***

---

### ***INDEX***

---

TECHNICAL DATA - - - - -	Pag.	82
IAM H55 2200-2500-2800 - - - - -	"	83
IAM H55 2500-2800-3000/C- - - - -	"	84
ORDERING INSTRUCTIONS - - - - -	"	85
GRAPHIC PERFORMANCES H55 2200-2500-2800-3000 - - - - -	"	86



Factory 19 / 5 Lyn Parade PRESTONS NSW 2170

Ph: (02) 9607 4100 Fax: (02) 9607 4200

# TECHNICAL DATA *H55*

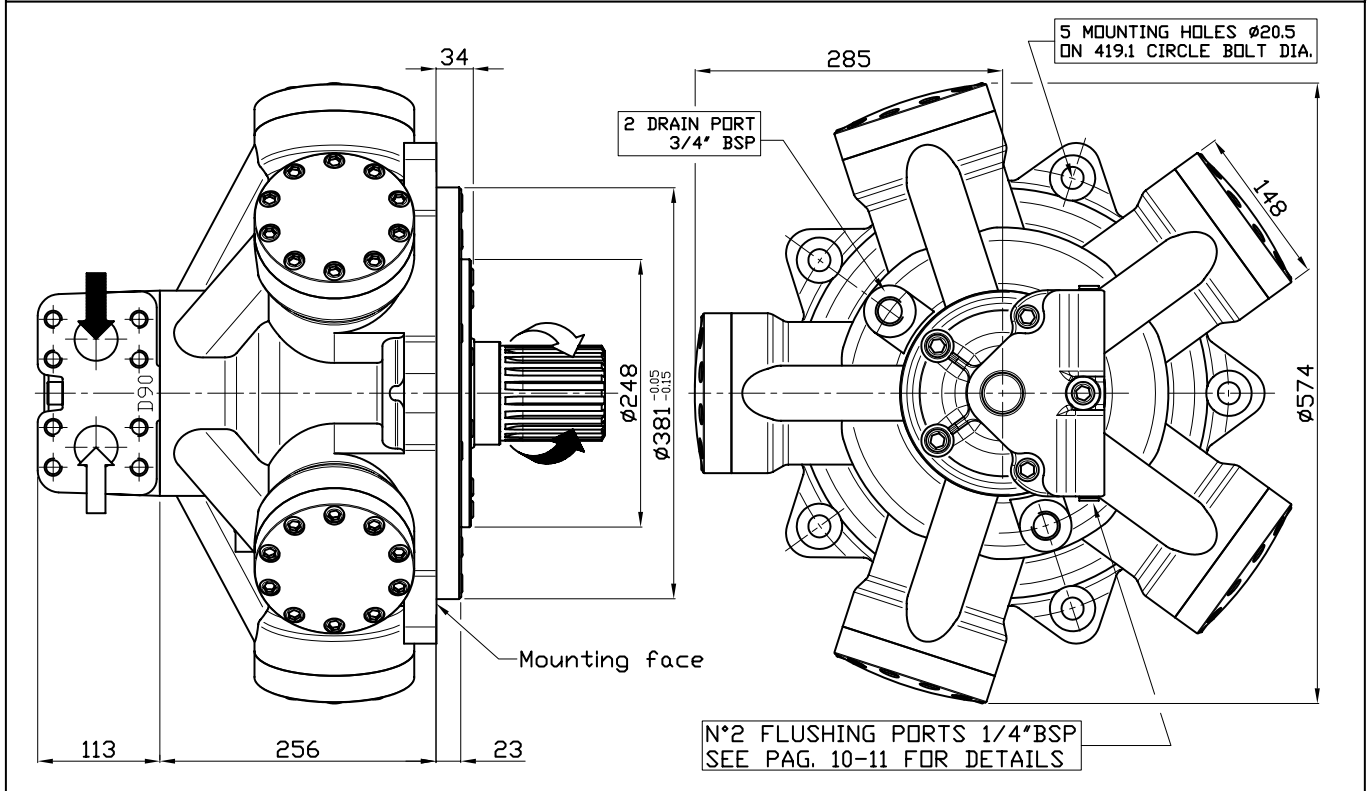
MODEL		IAM 2200 H55	IAM 2500 H55	IAM 2800 H55	IAM 3000 H55
Displacement	cc/rev	2126	2525	2807	3028
Specific Torque	Nm/bar	33.8	40.2	44.7	48.2
Max cont. Pressure	bar	250	250	250	250
Max int. Pressure	bar	300	300	300	300
Peak pressure	bar	350	350	350	350
Max continuous speed	rpm	240	240	240	230
Peak speed	rpm	280	280	280	270
Max continuous power	HP	163	163	163	163
	kW	120	120	120	120
Max power	HP	228	228	228	228
	kW	170	170	170	170

- N° of pistons: 5
- Max case pressure: 6 bar
- Max back pressure: 70 bar
- Dry weight: 203 kg
- Temperature range: -30°C ÷ +70°C
- Minimum speed: 0.5 rpm
- Flushing flow: 15 l/min

(\* )for further details regarding flushing go to page 10 of this catalogue.

## SIZE

### IAM H55 2200-2500-2800



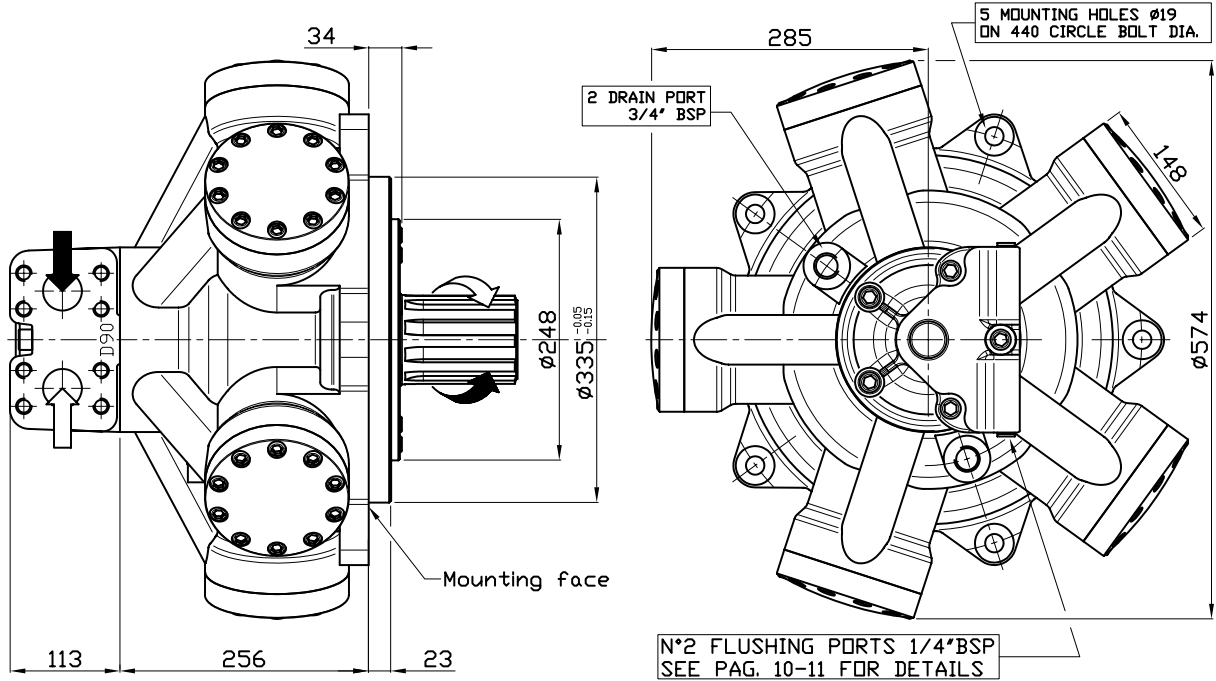
## SHAFT

### IAM H55 2200-2500-2800

A1: Standard splined shaft	A2: Parallel shaft on request
<p>Technical drawing of a standard splined shaft. Key dimensions and specifications are as follows:</p> <ul style="list-style-type: none"> <li>Mounting face</li> <li>Total length: 133</li> <li>Distance from mounting face to splined section: 97</li> <li>Distance from mounting face to end of shaft: 76</li> <li>Thread: 1/2" 20 UNF-2B</li> <li>Standards: BS.3550 1963, ASAB.5.15 1960</li> <li>Pitch: 6/12 Z=20</li> </ul>	<p>Technical drawing of a parallel shaft. Key dimensions and specifications are as follows:</p> <ul style="list-style-type: none"> <li>Mounting face</li> <li>Total length: 166</li> <li>Distance from mounting face to splined section: 131</li> <li>Distance from mounting face to end of shaft: 120</li> <li>Distance from mounting face to end of shaft: 24</li> <li>Thread: 1/2"-20 UNF-2B</li> <li>Diameter: <math>\varnothing 85 \pm 0.01</math></li> <li>Other dimension: 88</li> </ul>

## SIZE

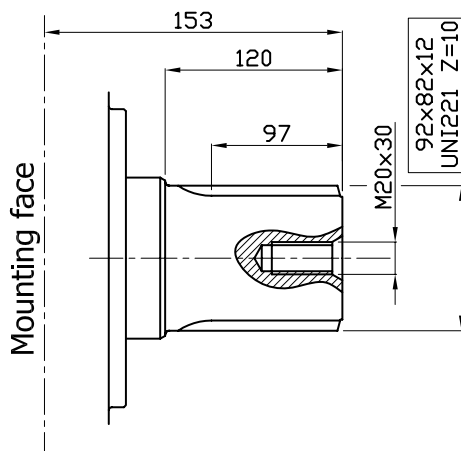
### IAM H55 2500/C-2800/C-3000/C



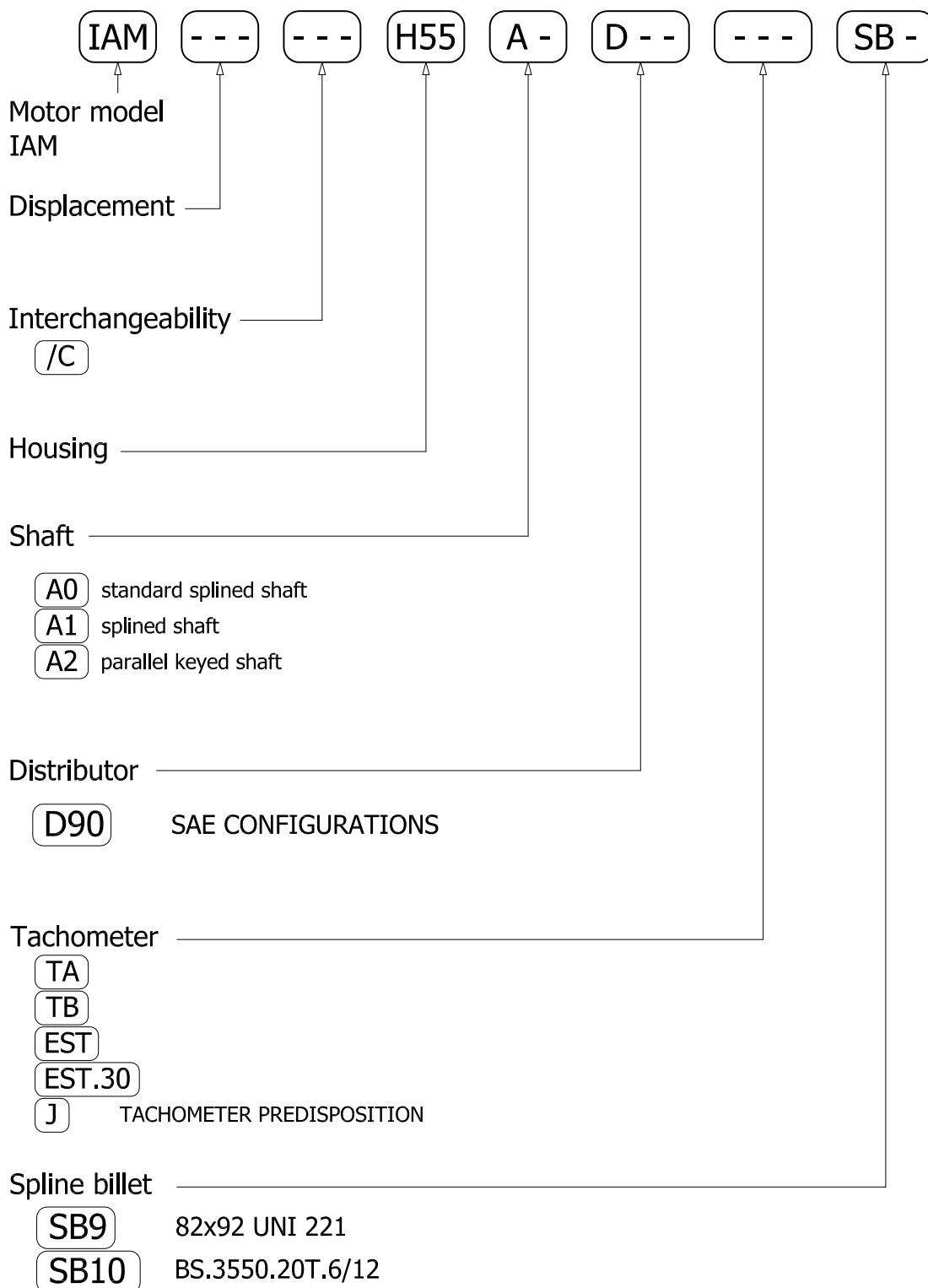
## SHAFT

### IAM H55 2500/C-2800/C-3000/C

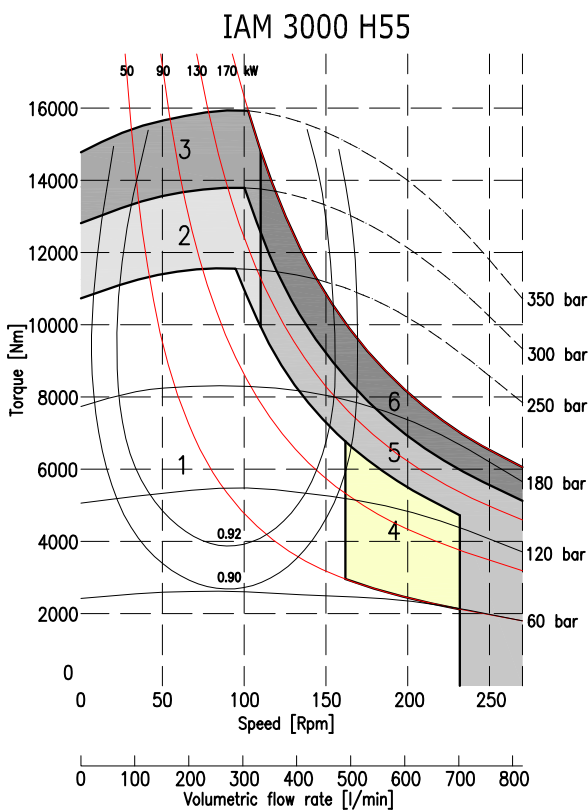
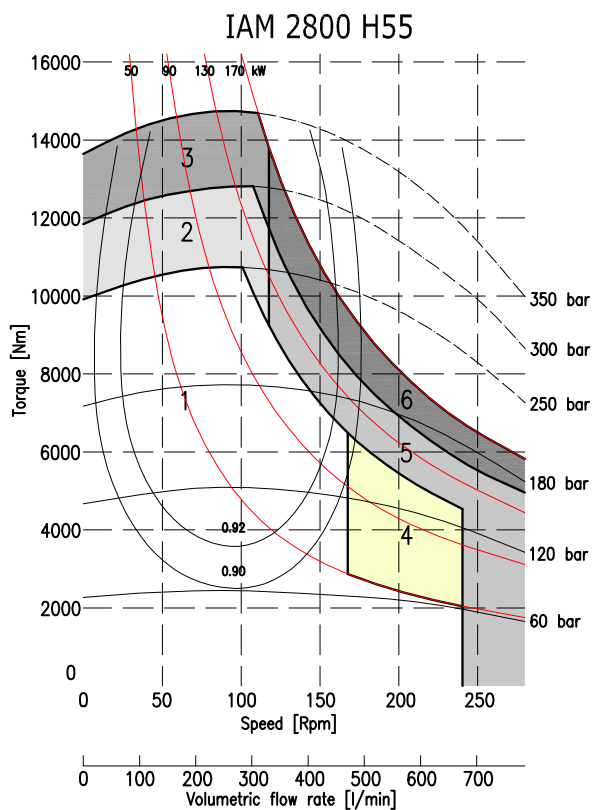
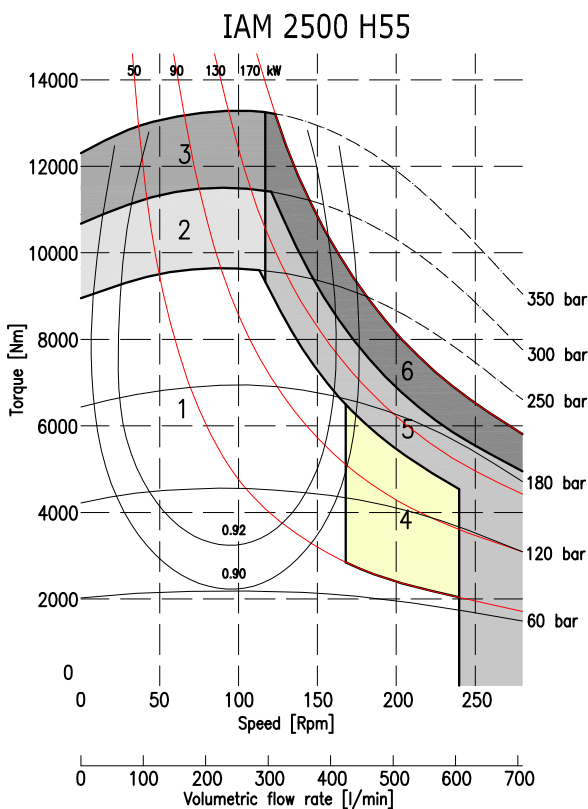
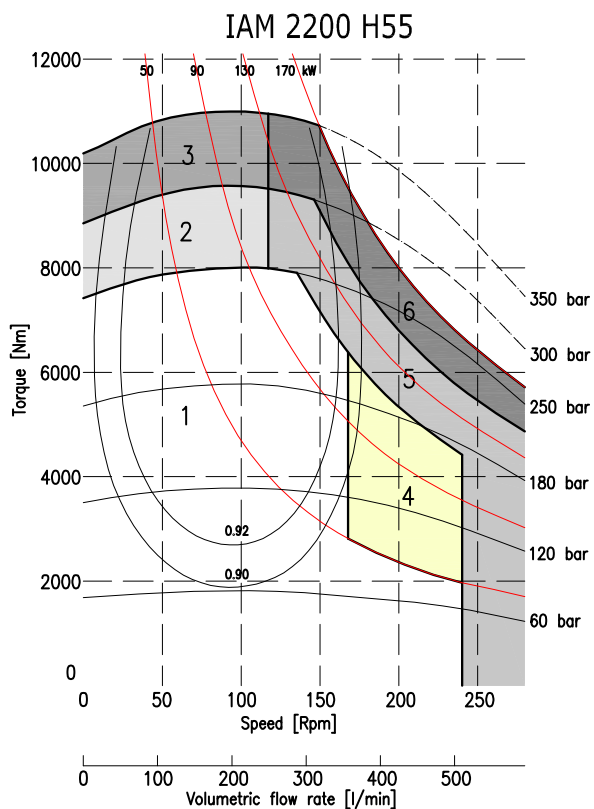
A0: Standard splined shaft



## ORDERING INSTRUCTIONS



**EXAMPLE:** IAM.2200.H55.A1.D90  
IAM.2800.H55.A2.D90.TA.SB9  
IAM.2500/C.H55.A0.D90



1	Continuous operation
2	Intermittent operation for period 3-5 minutes every 10-15 minutes
3	Intermittent operation for very short period (3-5 seconds every 10-15 minutes)

4	Continuous operation with flushing
5	Intermittent operation for period 3-5 minutes every 10-15 minutes with flushing
6	Intermittent operation for very short period (3-5 seconds every 10-15 minutes) with flushing



---

# ***INTERMOT - ADVANCED - MOTORS***

## ***IAM SERIES***

---

### ***H6 MODEL***

---

***IAM 2200-2500-2800  
3000-3200-3500 H6***

***IAM 2200-2500-2800  
3000-3200-3500/C H6***

***IAM 2200/B125  
2500/B150  
3000/B200***

---

### ***INDEX***

---

TECHNICAL DATA - - - - -	<i>Pag.</i>	88
IAM H6 2200-2500-2800-3000-3200-3500 - - - - -	"	89
IAM H6 2200-2500-2800-3000-3200-3500/C - - - - -	"	90
IAM H6 2200/B125 2500/B150 3000/B200 - - - - -	"	91
ORDERING INSTRUCTIONS - - - - -	"	92
GRAPHIC PERFORMANCES H6 2200-2500-2800-3000 - - - - -	"	93
GRAPHIC PERFORMANCES H6 3200-3500 - - - - -	"	94

---

# TECHNICAL DATA

# H6

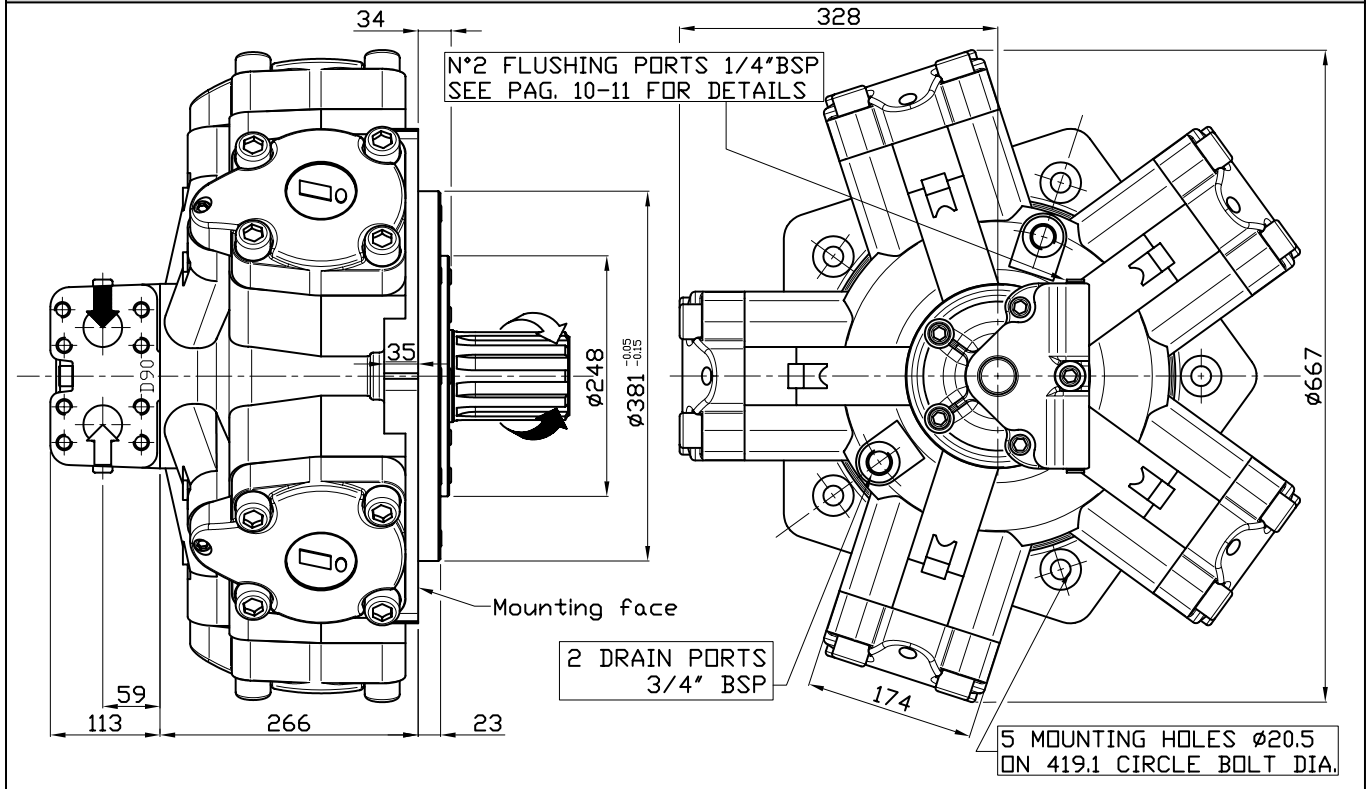
	MODEL	IAM 2200 H6	IAM 2500 H6	IAM 2800 H6	IAM 3000 H6	IAM 3200 H6	IAM 3500 H6
Displacement	cc/rev	2206	2525	2807	2983	3289	3479
Specific Torque	Nm/bar	35.1	40.2	44.7	47.5	52.3	55.4
Max cont. Pressure	bar	250	250	250	250	250	250
Max int. Pressure	bar	300	300	300	300	300	300
Peak pressure	bar	350	350	350	350	350	350
Max continuous speed	rpm	220	220	220	210	200	200
Peak speed	rpm	260	260	260	250	240	240
Max continuous power	HP	163	163	163	163	163	163
	kW	120	120	120	120	120	120
Max power	HP	228	228	228	228	228	228
	kW	170	170	170	170	170	170

- N° of pistons: 5
- Max case pressure: 6 bar
- Max back pressure: 70 bar
- Dry weight: 308 kg
- Temperature range: -30°C ÷ +70°C
- Minimum speed: 0.5 rpm
- Flushing flow: 15 l/min

(\*)for further details regarding flushing go to page 10 of this catalogue.

## SIZE

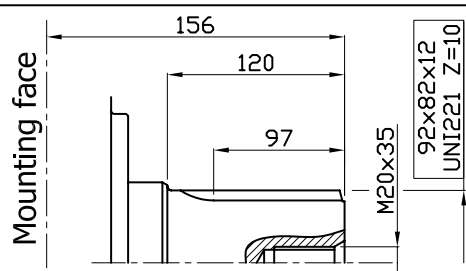
### IAM 2200-2500-2800-3000-3200-3500 H6



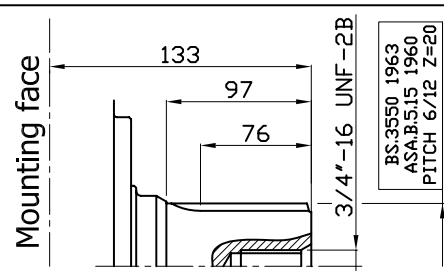
## SHAFT

### IAM 2200-2500-2800-3000-3200-3500 H6

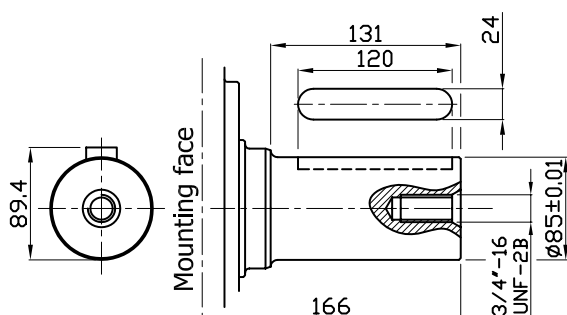
**A0: Standard splined shaft**



**A1: Splined shaft on request**

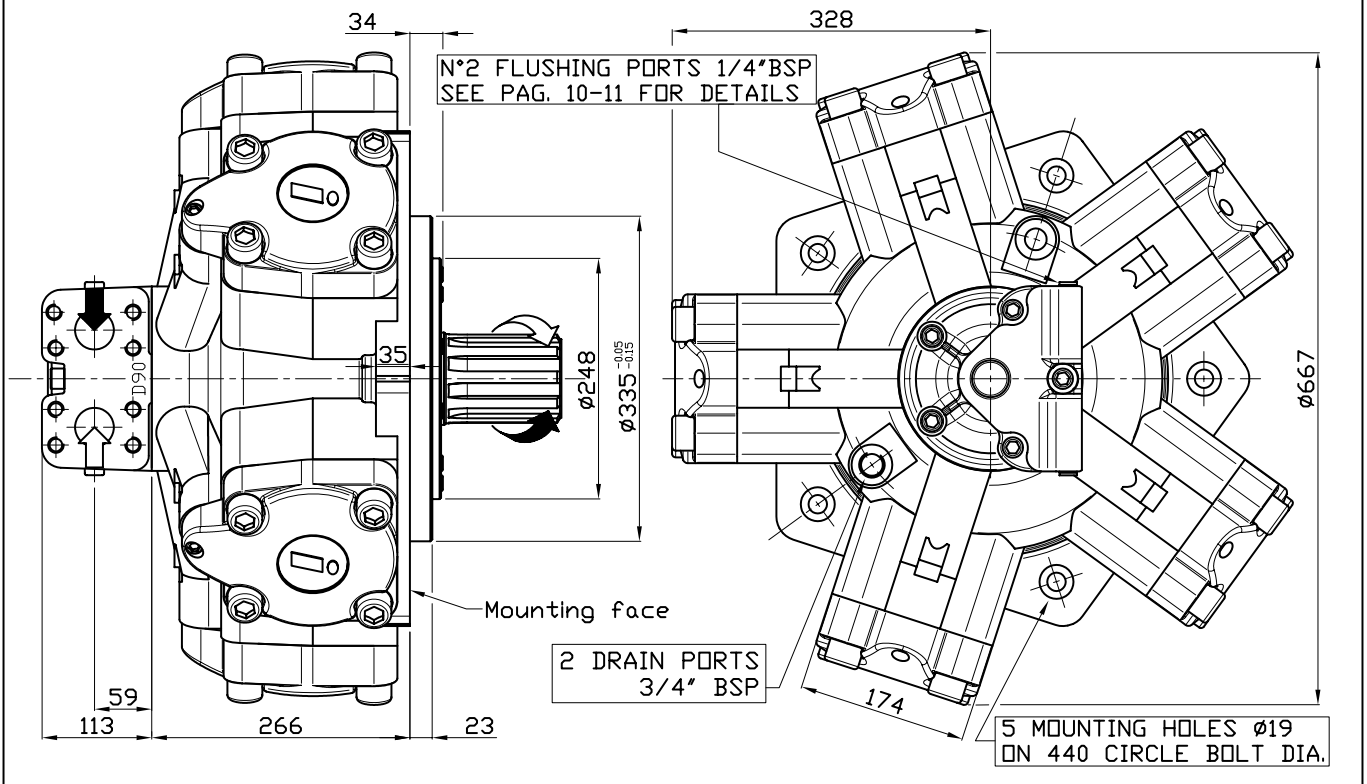


**A2: Parallel shaft on request**



## SIZE

### IAM 2200/C-2500/C-2800/C-3000/C-3200/C-3500/C H6



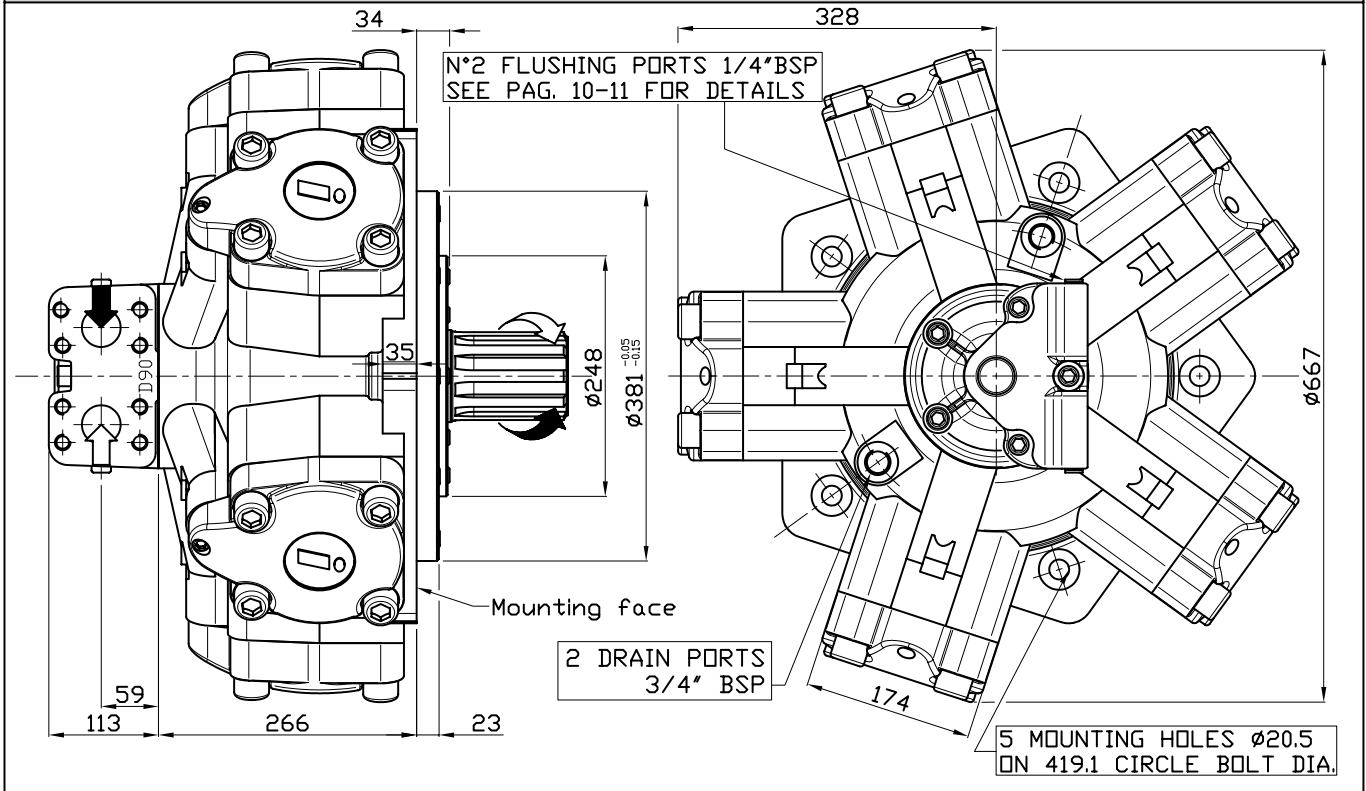
## SHAFT

### IAM 2200/C-2500/C-2800/C-3000/C-3200/C-3500/C H6

A0: Standard splined shaft	A1: Splined shaft on request
<p>Technical drawing of standard splined shaft A0 showing dimensions: 156, 120, 97, M20x35, 92x82x12 UNI221 Z=10.</p>	<p>Technical drawing of splined shaft A1 on request showing dimensions: 133, 97, 76, 3/4"-16 UNF-2B, BS.3550.1963 ASA.B.5.15.1960 PITCH 6/12 Z=20.</p>
A2: Parallel shaft on request	A3: Female shaft on request
<p>Technical drawing of parallel shaft A2 on request showing dimensions: 94.4, 120, 110, 25, 153, M20x35, <math>\phi 90 \pm 0.01</math>.</p>	<p>Technical drawing of female shaft A3 on request showing dimensions: 14, 10, 48, 60, N85x3x27-9H DIN. 5480, <math>\phi 105</math>.</p>

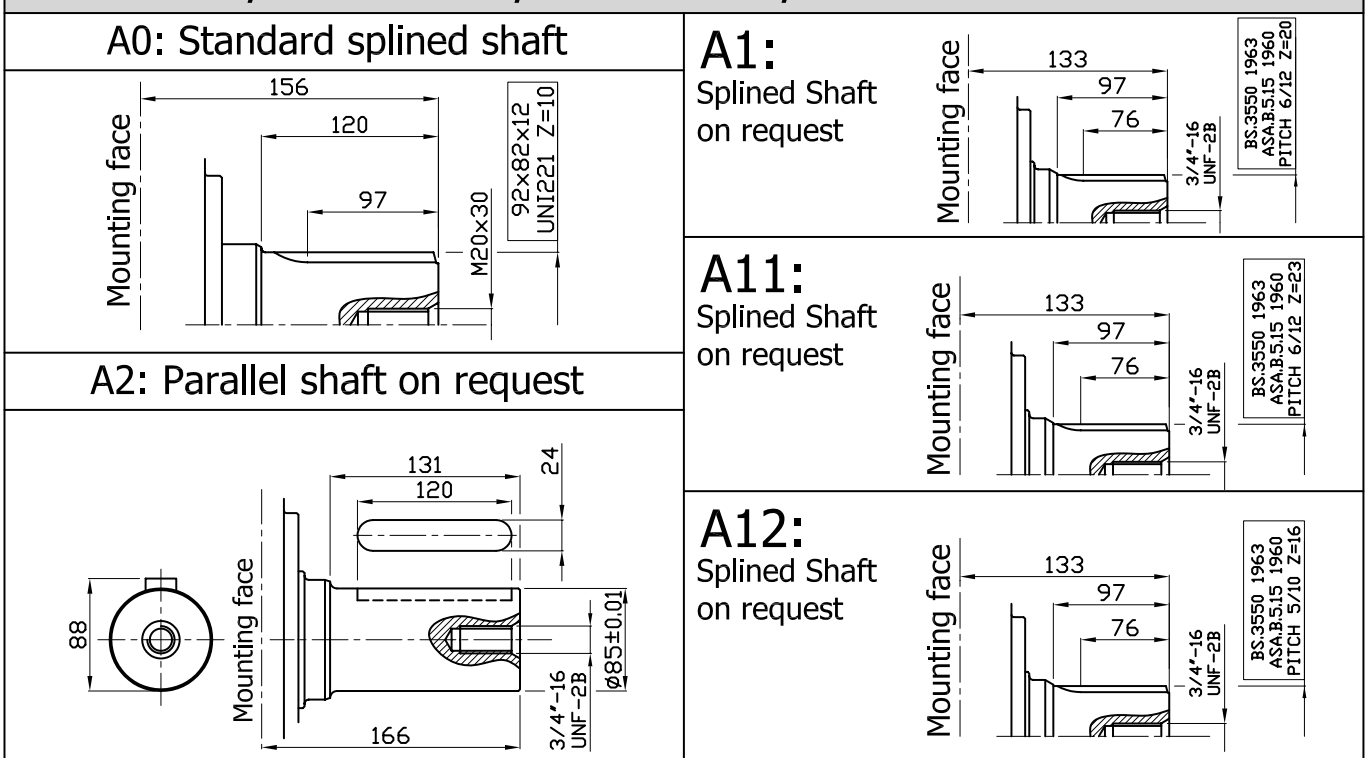
## SIZE

### IAM 2200/B125-2500/B150-3000/B200 H6

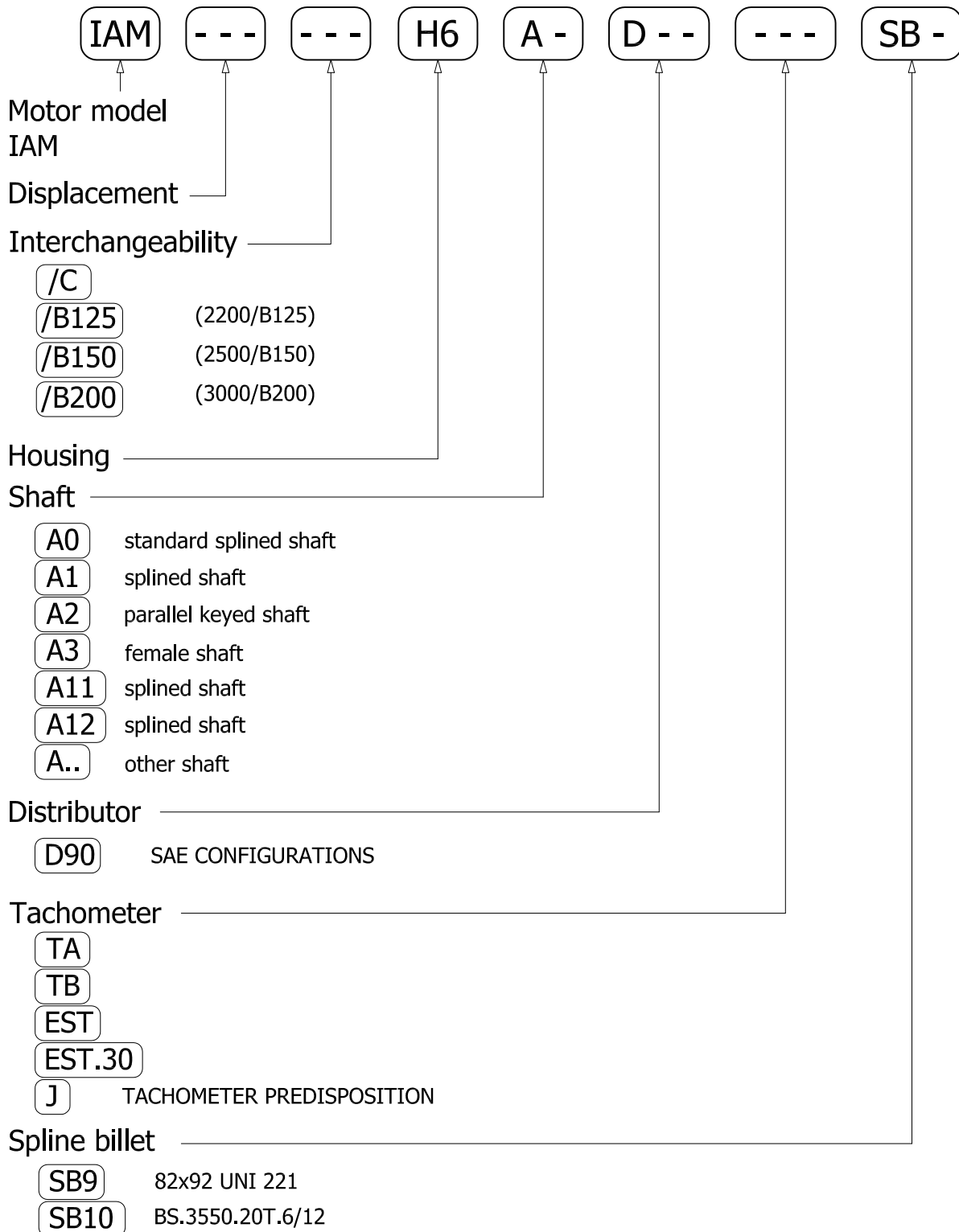


## SHAFT

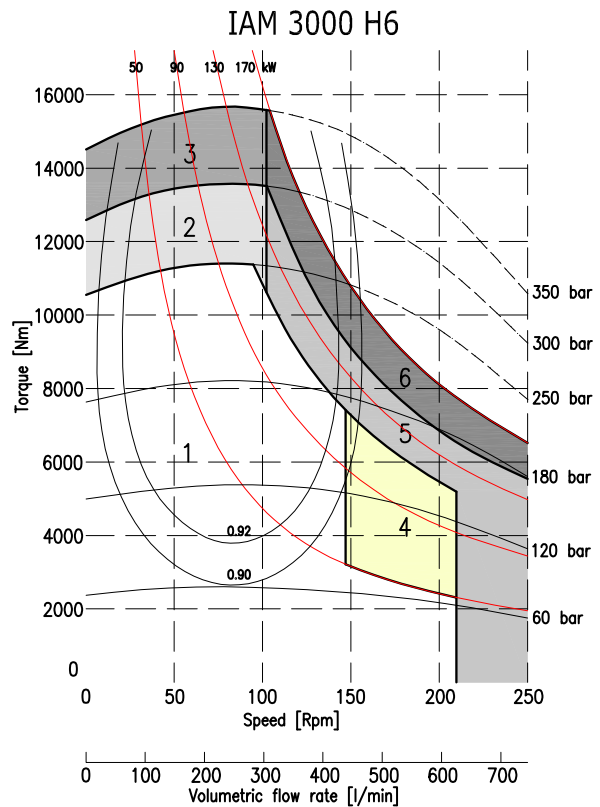
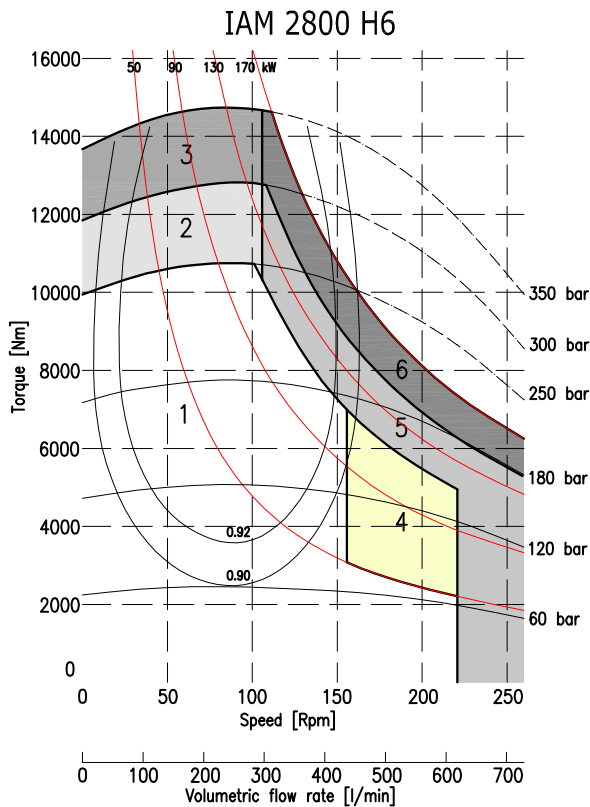
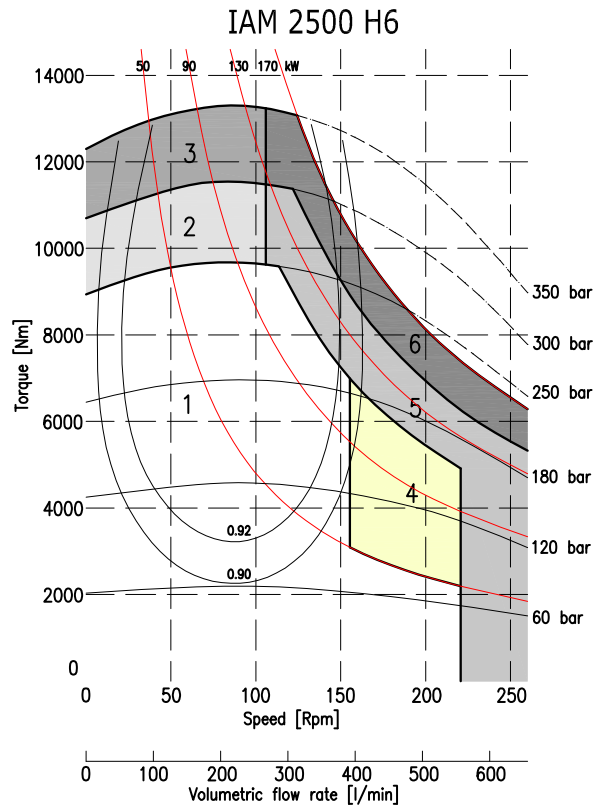
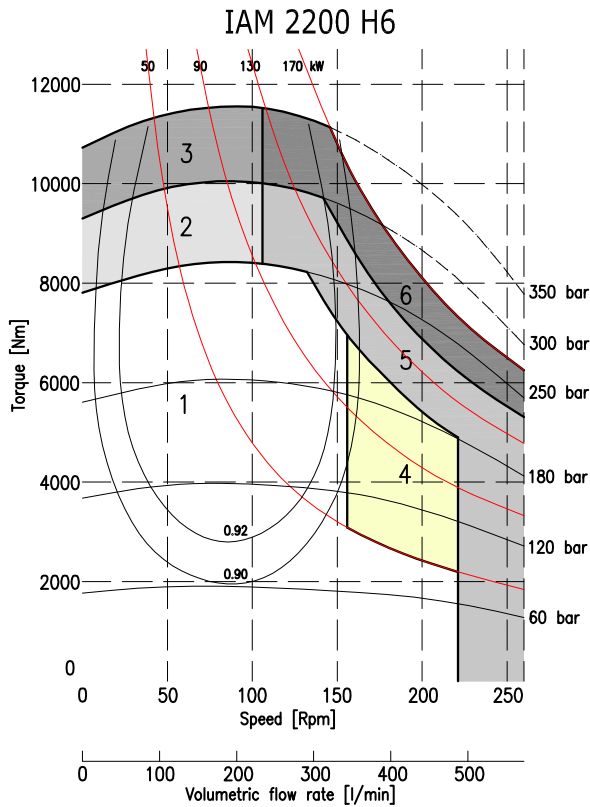
### IAM 2200/B125-2500/B150-3000/B200 H6



## ORDERING INSTRUCTIONS

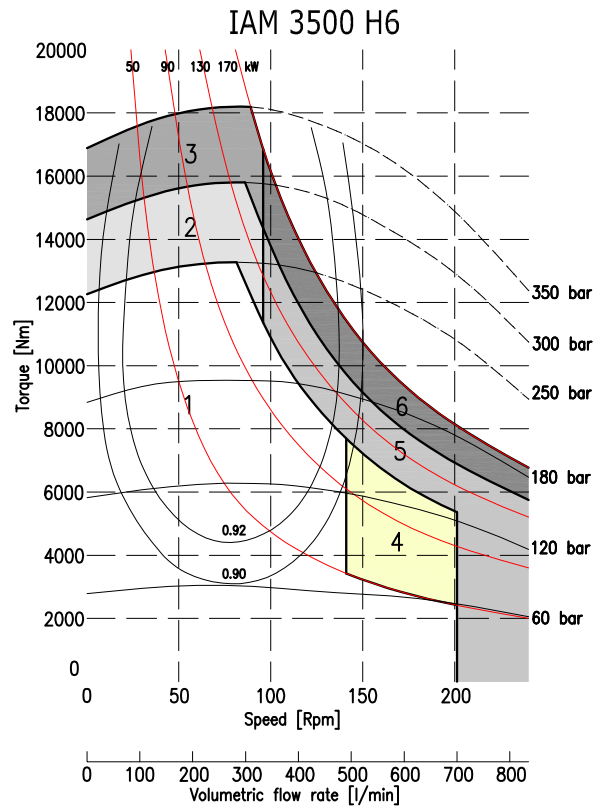
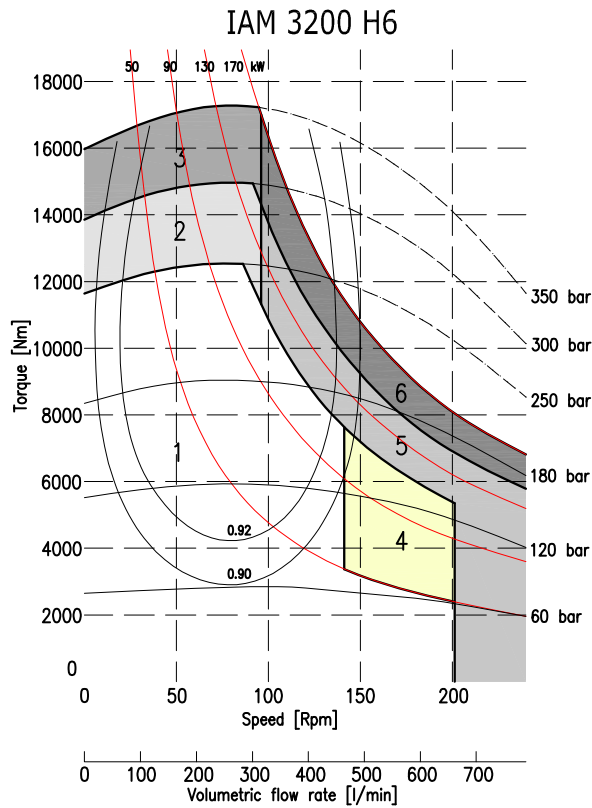


**EXAMPLE:** IAM.2500.H6.A1.D90  
IAM.2800.H6.A0.D90.TA.SB9  
IAM.2500/C.H6.A2.D90.J



1	Continuous operation
2	Intermittent operation for period 3-5 minutes every 10-15 minutes
3	Intermittent operation for very short period (3-5 seconds every 10-15 minutes)

4	Continuous operation with flushing
5	Intermittent operation for period 3-5 minutes every 10-15 minutes with flushing
6	Intermittent operation for very short period (3-5 seconds every 10-15 minutes) with flushing



1	Continuous operation
	Intermittent operation for period 3-5 minutes every 10-15 minutes
	Intermittent operation for very short period (3-5 seconds every 10-15 minutes)

	Continuous operation with flushing
	Intermittent operation for period 3-5 minutes every 10-15 minutes with flushing
	Intermittent operation for very short period (3-5 seconds every 10-15 minutes) with flushing



Factory 19 / 5 Lyn Parade PRESTONS NSW 2170

Ph: (02) 9607 4100 Fax: (02) 9607 4200



---

# ***INTERMOT - ADVANCED - MOTORS***

## ***IAM SERIES***

---

### ***H7 MODEL***

---

***IAM 3900-4300-4600-  
5000-5400 H7***

***IAM 3900-4300-4600-  
5000-5400/C H7***

---

### ***INDEX***

---

TECHNICAL DATA - - - - -	<i>Pag.</i>	96
IAM H7 3900-4300-4600-5000-5400 - - - - -	"	97
IAM H7 3900-4300-4600-5000-5400/C - - - - -	"	98
ORDERING INSTRUCTIONS - - - - -	"	99
GRAPHIC PERFORMANCES H7 3900-4300-4600-5000 - - - - -	"	100
GRAPHIC PERFORMANCES H7 5400 - - - - -	"	101

---

# TECHNICAL DATA

# H7

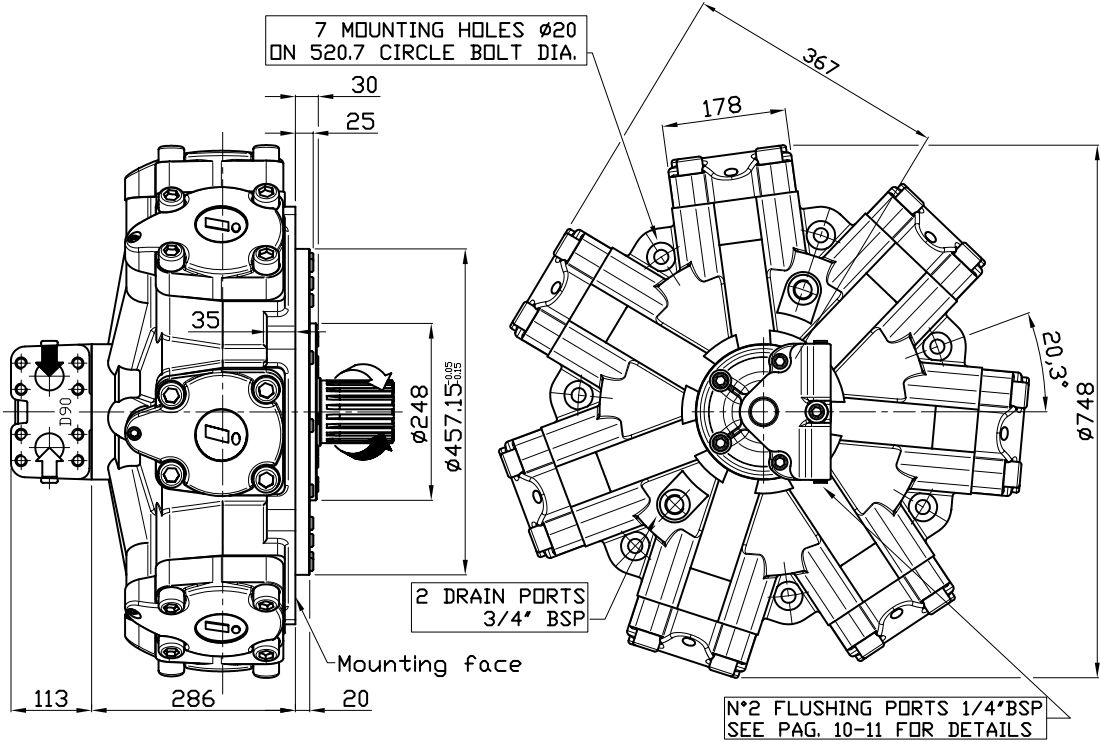
MODEL		IAM 3900 H7	IAM 4300 H7	IAM 4600 H7	IAM 5000 H7	IAM 5400 H7
Displacement	cc/rev	3907	4343	4616	5088	5384
Specific Torque	Nm/bar	62.2	69.1	73.5	81.0	85.7
Max cont. Pressure	bar	250	250	250	250	250
Max int. Pressure	bar	300	300	300	300	300
Peak pressure	bar	350	350	350	350	350
Max continuous speed	rpm	160	150	140	140	130
Peak speed	rpm	200	190	190	180	170
Max continuous power	HP	177	177	177	177	177
	kW	130	130	130	130	130
Max power	HP	241	241	241	241	241
	kW	180	180	180	180	180

- N° of pistons: 7
- Max case pressure: 6 bar
- Max back pressure: 70 bar
- Dry weight: 405 kg
- Temperature range: -30°C ÷ +70°C
- Minimum speed: 0.5 rpm
- Flushing flow: 20 l/min

(\*for further details regarding flushing go to page 10 of this catalogue.

## SIZE

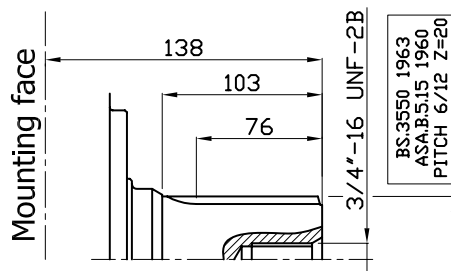
### IAM 3900-4300-4600-5000-5400 H7



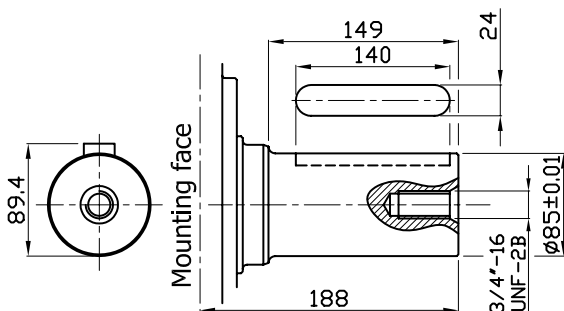
## SHAFT

### IAM 3900-4300-4600-5000-5400 H7

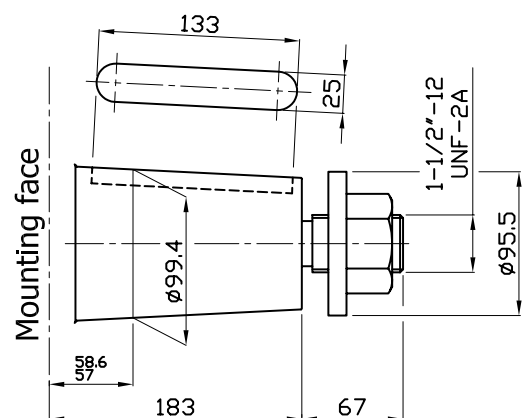
A1: Standard splined shaft



A2: Parallel shaft on request

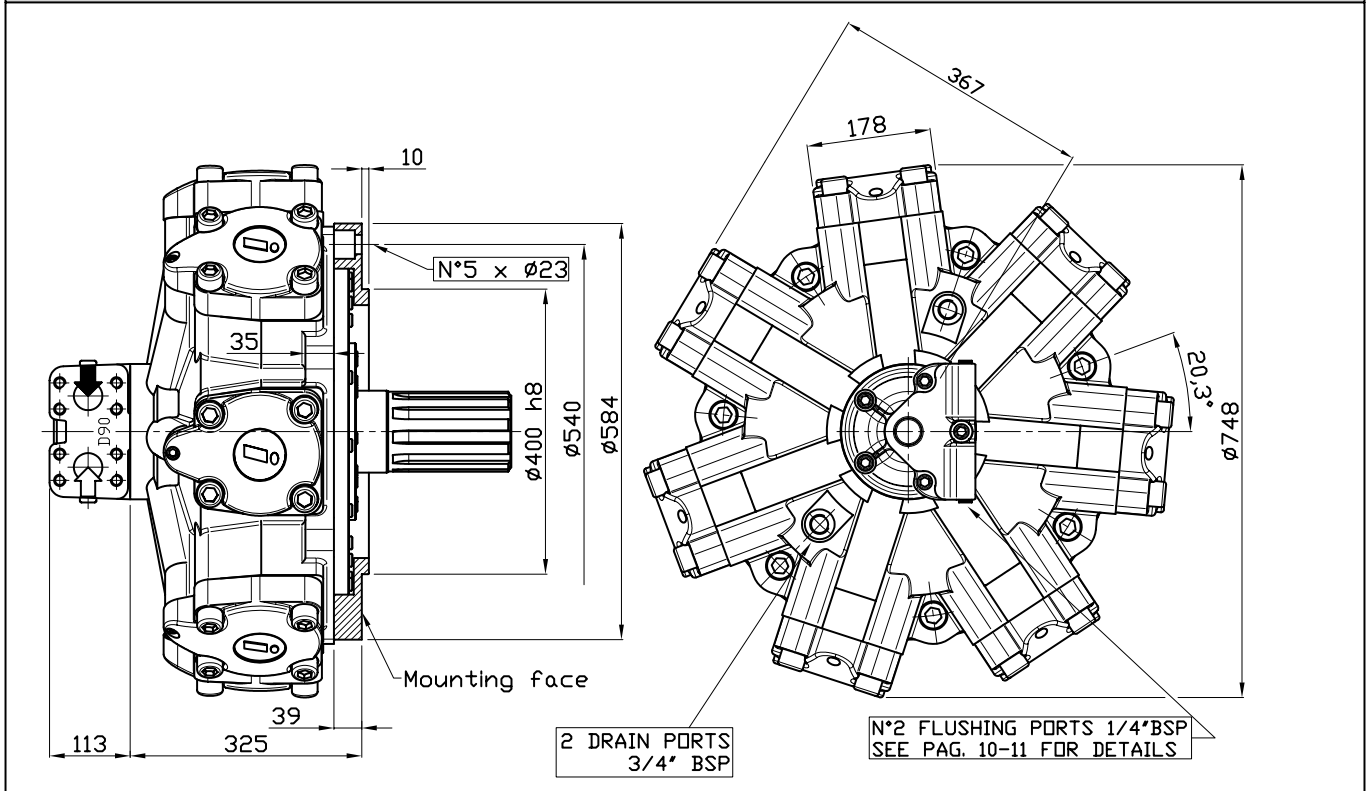


A4: Taper shaft on request



## SIZE

### IAM 3900/C-4300/C-4600/C-5000/C-5400/C H7

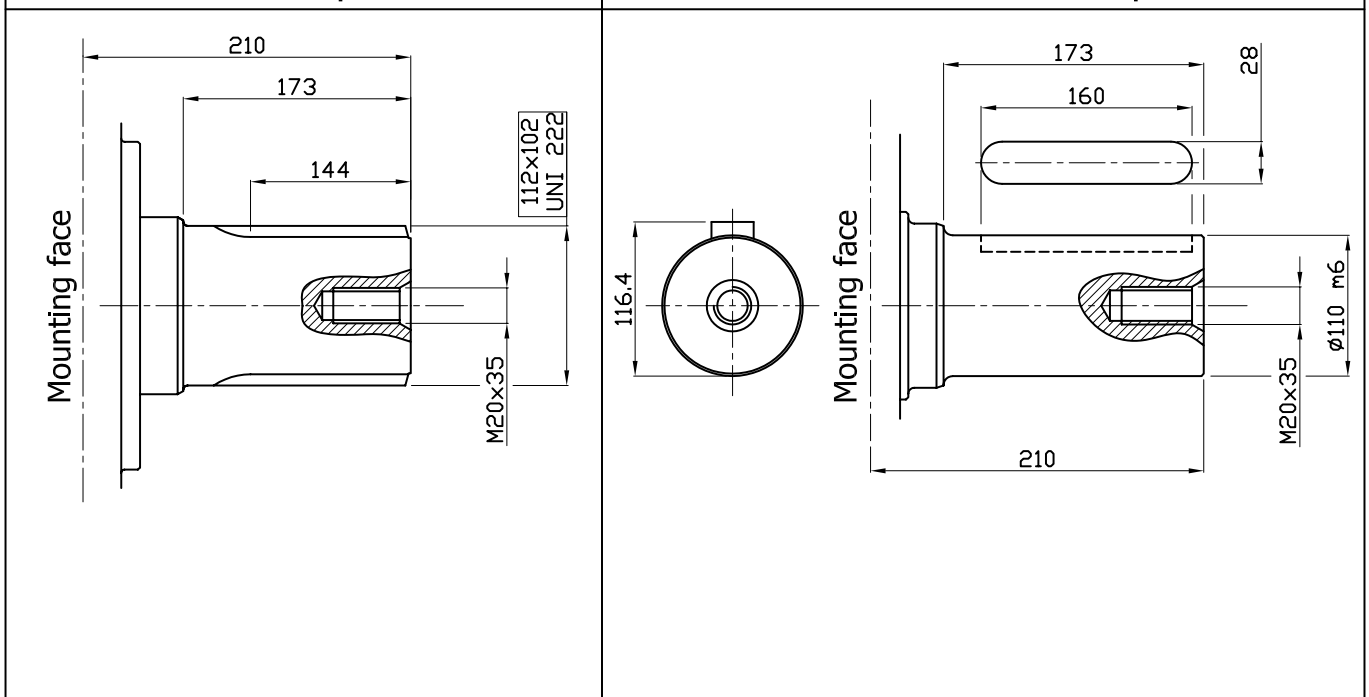


## SHAFT

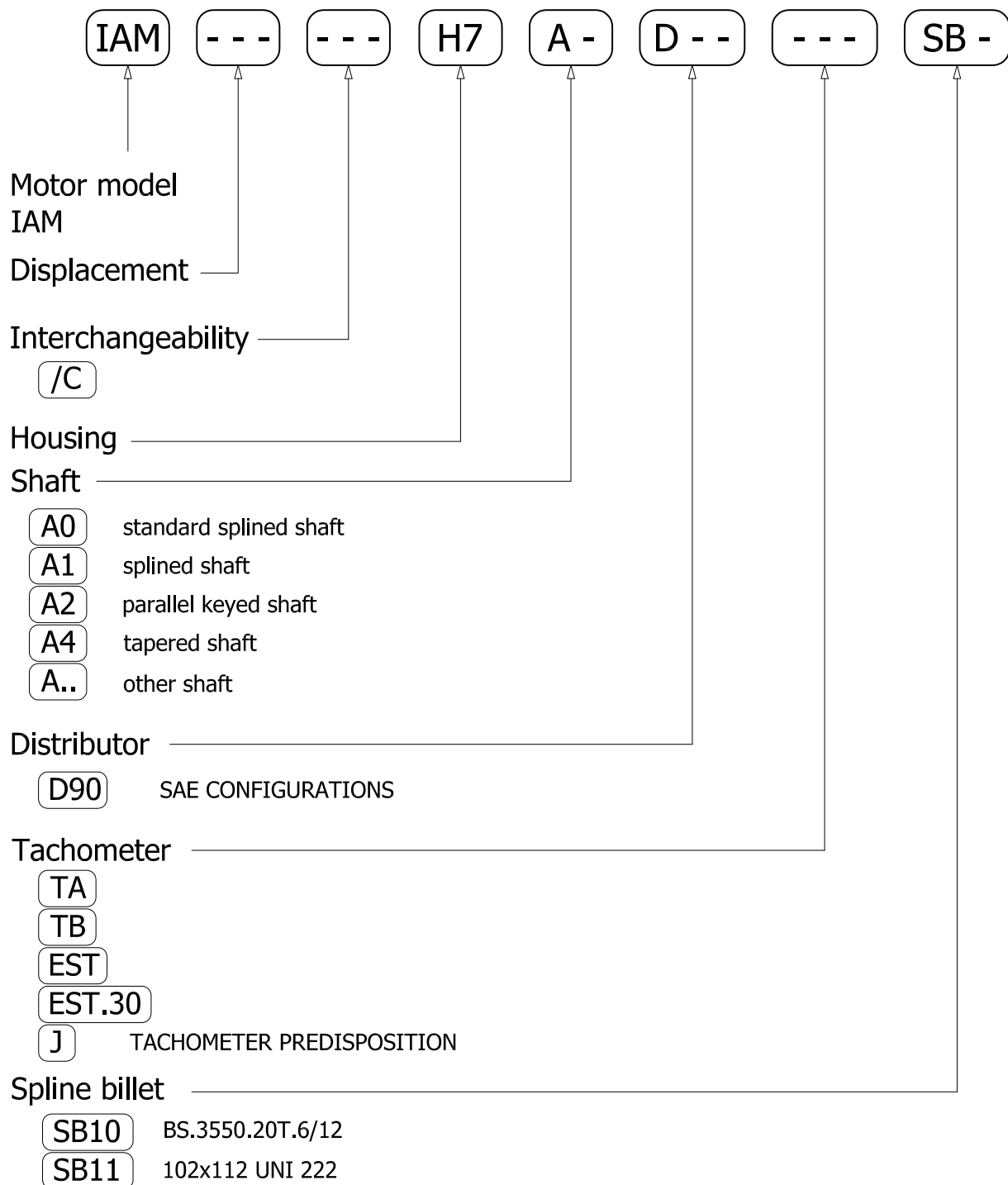
### IAM 3900/C-4300/C-4600/C-5000/C-5400/C H7

A0: Standard splined shaft

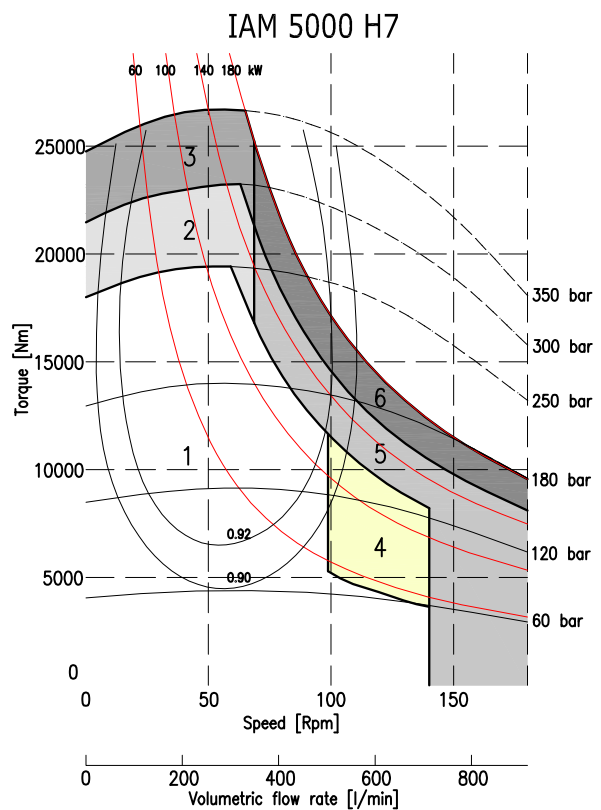
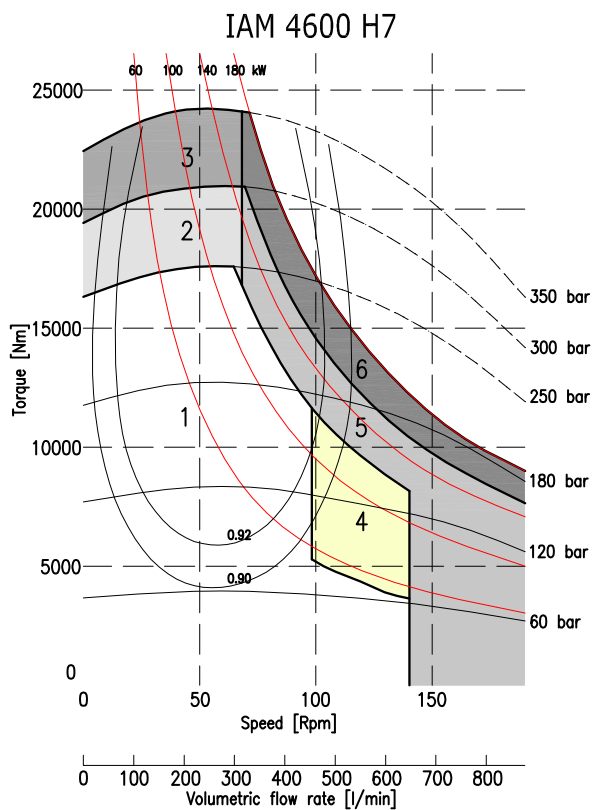
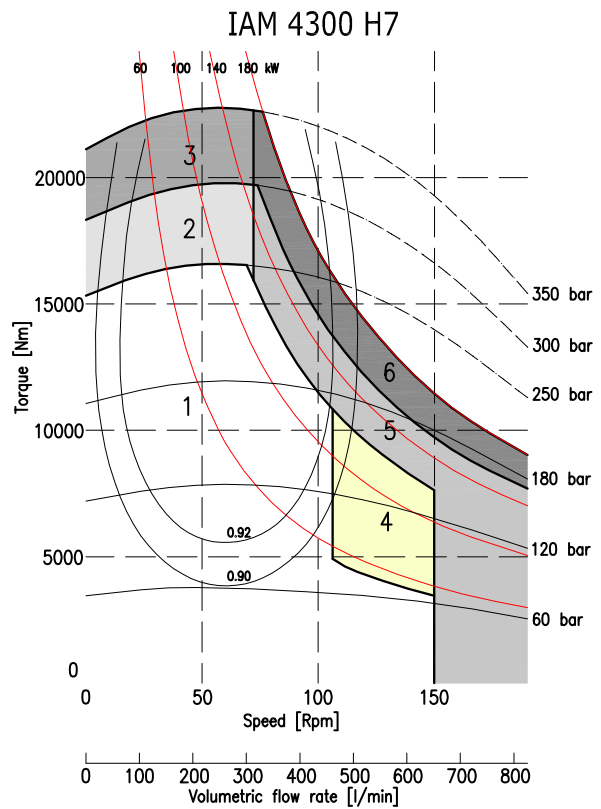
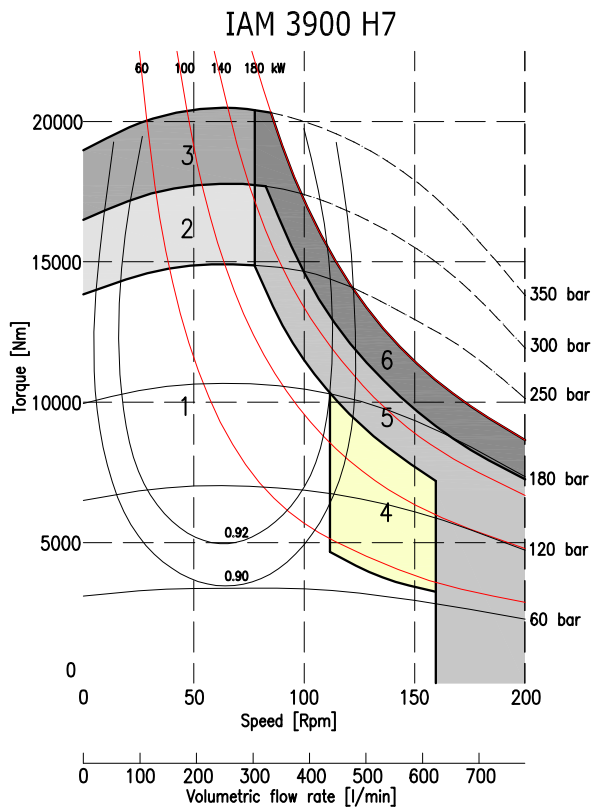
A2: Parallel shaft on request



## ORDERING INSTRUCTIONS

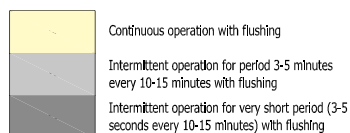
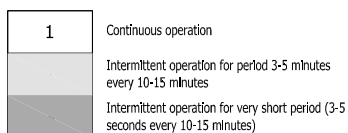
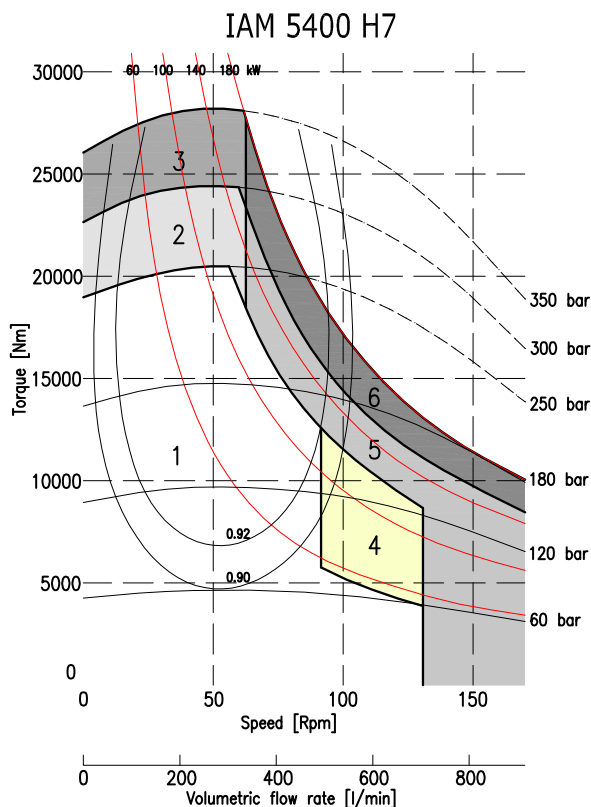


**EXAMPLE:** IAM.3900.H7.A1.D90  
IAM.4600.H7.A1.D90.TA.SB10  
IAM.5400/C.H7.A2.D90.J



1	Continuous operation
2	Intermittent operation for period 3-5 minutes every 10-15 minutes
3	Intermittent operation for very short period (3-5 seconds every 10-15 minutes)

4	Continuous operation with flushing
5	Intermittent operation for period 3-5 minutes every 10-15 minutes with flushing
6	Intermittent operation for very short period (3-5 seconds every 10-15 minutes) with flushing



---

# ***INTERMOT - ADVANCED - MOTORS***

## ***IAM SERIES***

---

### ***H8 MODEL***

---

***IAM 6000-6500-6800-  
7600-8000 H8***

***IAM 6000-6500-6800-  
7600-8000 H8***

---

### ***INDEX***

---

TECHNICAL DATA - - - - -	<i>Pag.</i>	104
IAM H8 6000-6500-6800-7600-8000 - - - - -	"	105
IAM H8 6000-6500-6800-7600-8000/C - - - - -	"	106
ORDERING INSTRUCTIONS - - - - -	"	107
GRAPHIC PERFORMANCES H8 6000-6500-6800-7600 - - - - -	"	108
GRAPHIC PERFORMANCES H8 8000 - - - - -	"	109

---



# TECHNICAL DATA

# H8

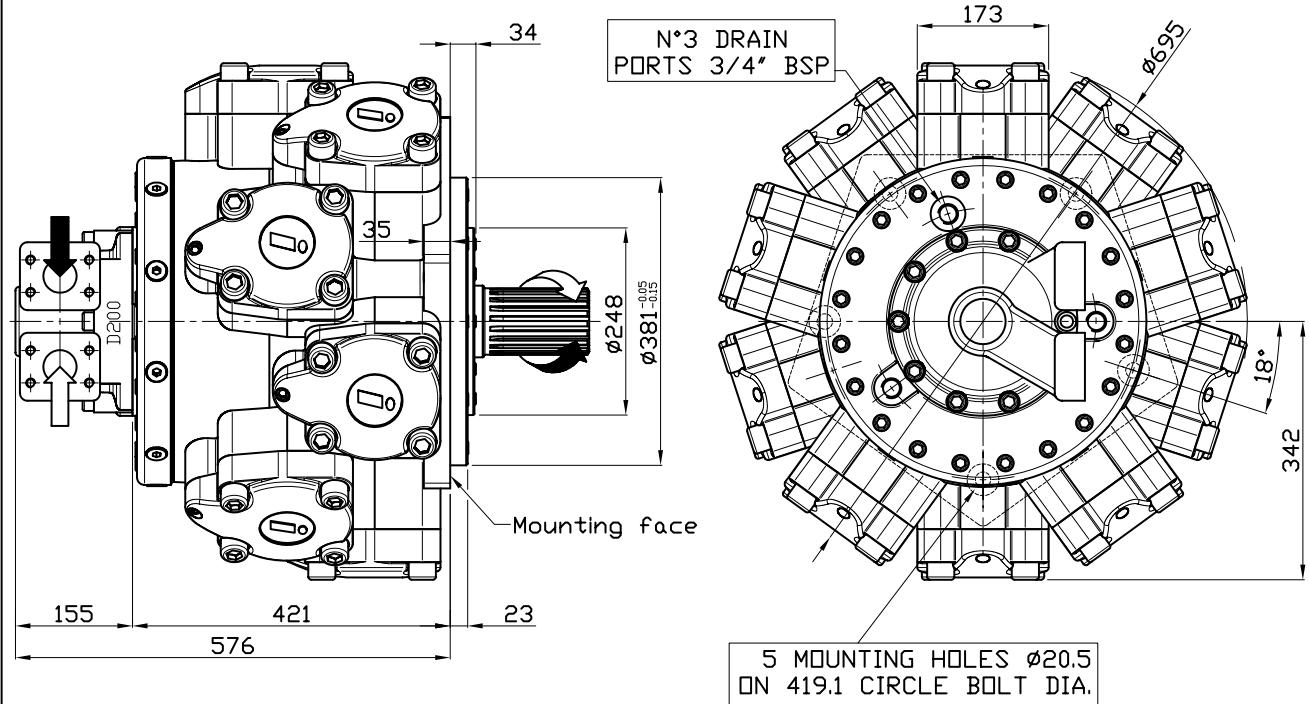
	MODEL	IAM 6000 H8	IAM 6500 H8	IAM 6800 H8	IAM 7600 H8	IAM 8000 H8
Displacement	cc/rev	5966	6581	6962	7620	8062
Specific Torque	Nm/bar	95.0	104.7	110.8	121.3	128.3
Max cont. Pressure	bar	250	250	250	190	180
Max int. Pressure	bar	290	290	290	230	220
Peak pressure	bar	320	320	320	280	270
Max continuous speed	rpm	120	120	120	90	80
Peak speed	rpm	140	140	140	100	90
Max continuous power	HP	183	183	183	177	177
	kW	135	135	135	130	130
Max power	HP	255	255	255	241	241
	kW	190	190	190	180	180

- N° of pistons: 10
- Max case pressure: 6 bar
- Max back pressure: 70 bar
- Dry weight: 590 kg
- Temperature range: -30°C ÷ +70°C
- Minimum speed: 0.5 rpm
- Flushing flow: 20 l/min

(\* )for further details regarding flushing go to page 10 of this catalogue.

## SIZE

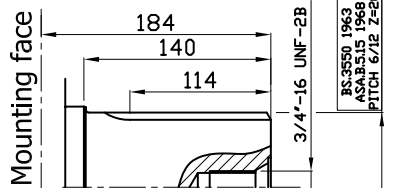
### IAM 6000-6500-6800-7600-8000 H8



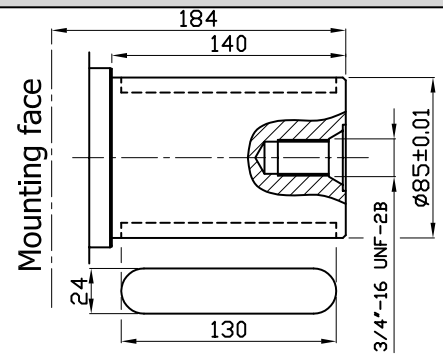
## SHAFT

### IAM 6000-6500-6800-7600-8000 H8

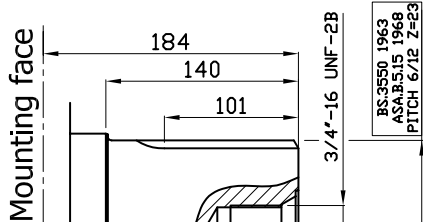
**A1:**  
Standard  
Splined Shaft



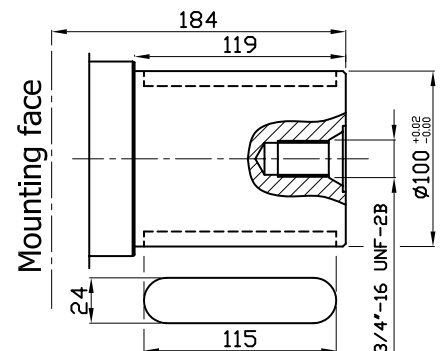
**A2:**  
Parallel Shaft  
on request



**A11:**  
Splined Shaft  
on request

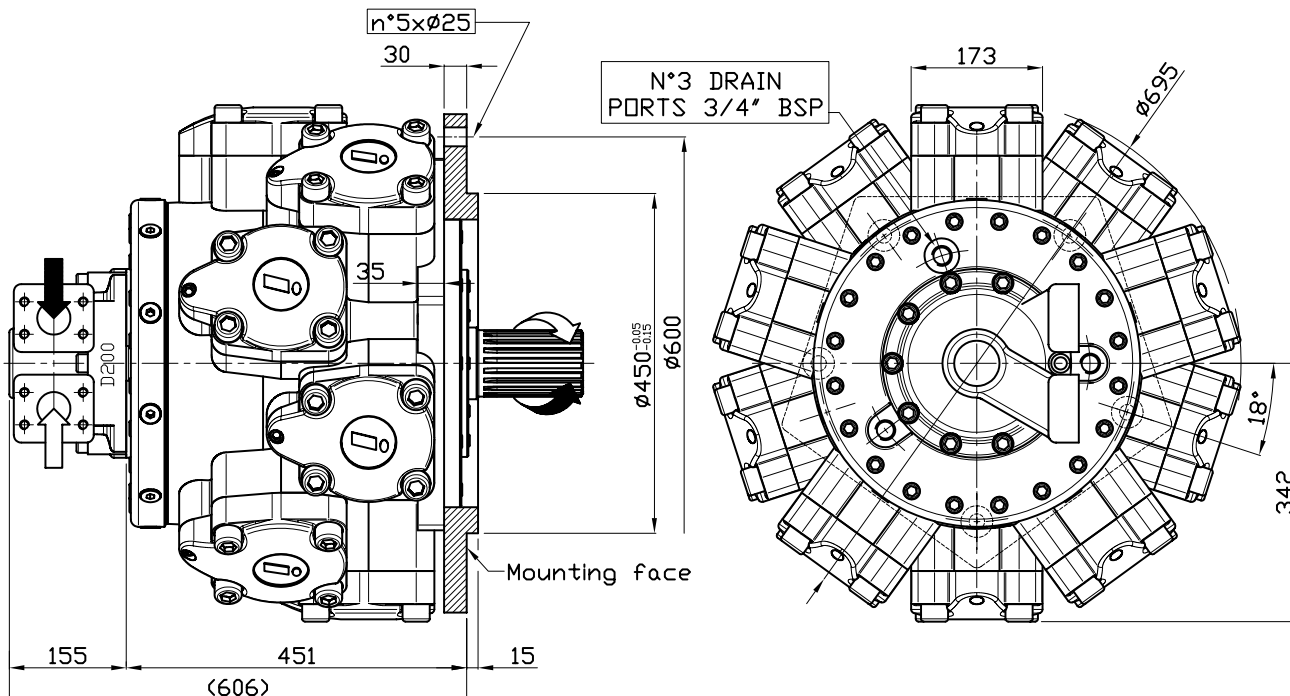


**A22:**  
Parallel Shaft  
on request



## SIZE

### IAM 6000/C-6500/C-6800/C-7600/C-8000/C H8

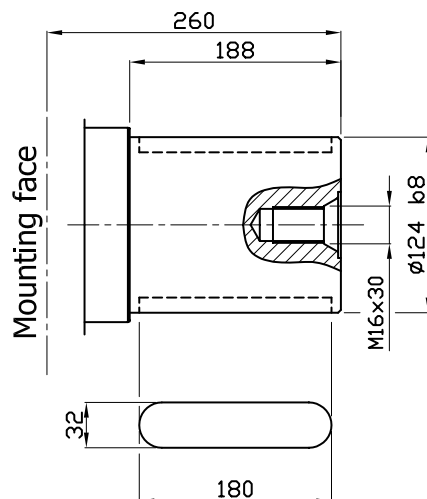
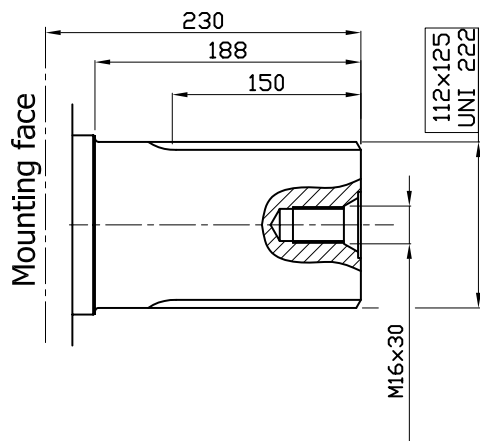


## SHAFT

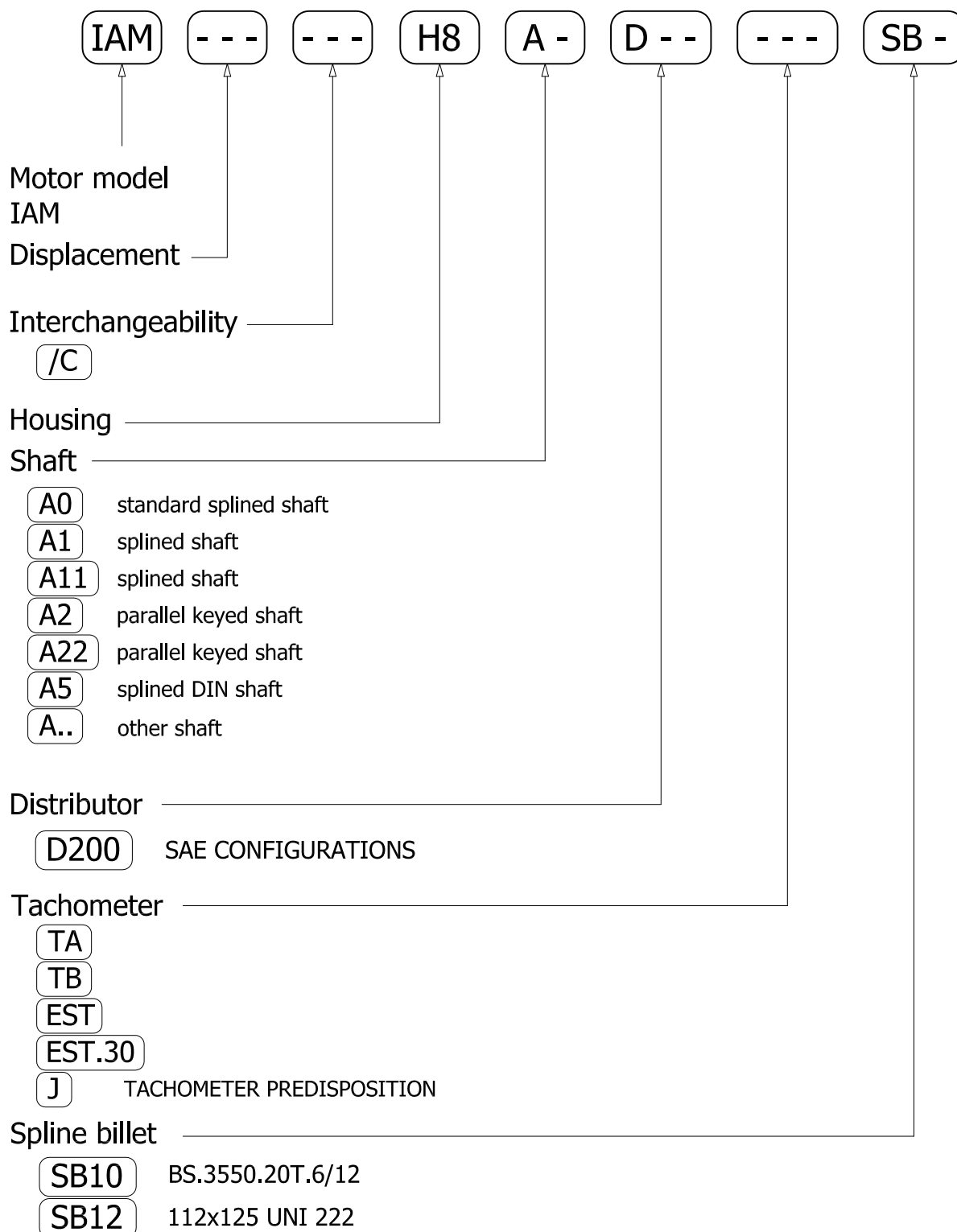
### IAM 6000/C-6500/C-6800/C-7600/C-8000/C H8

A0: Standard splined shaft

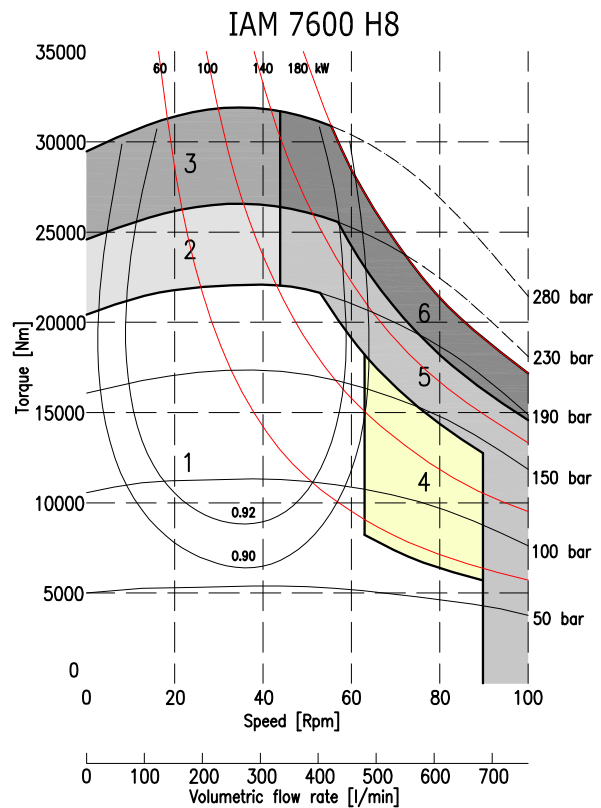
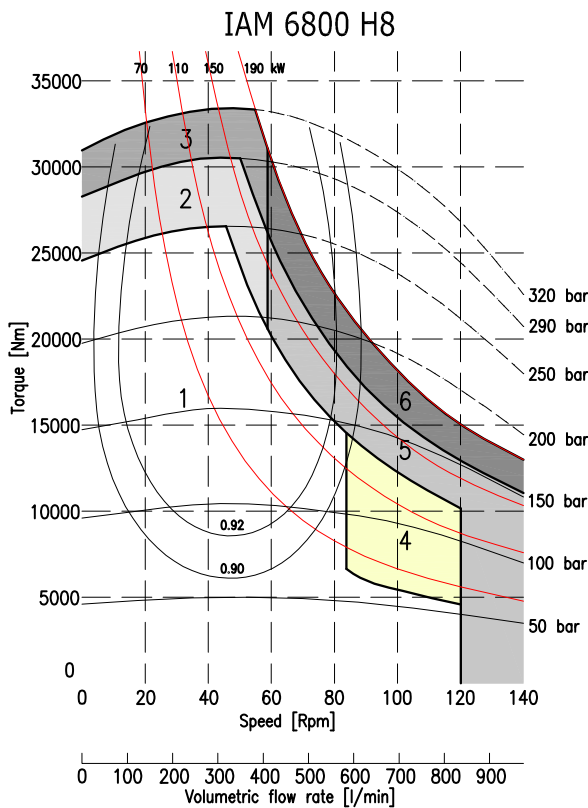
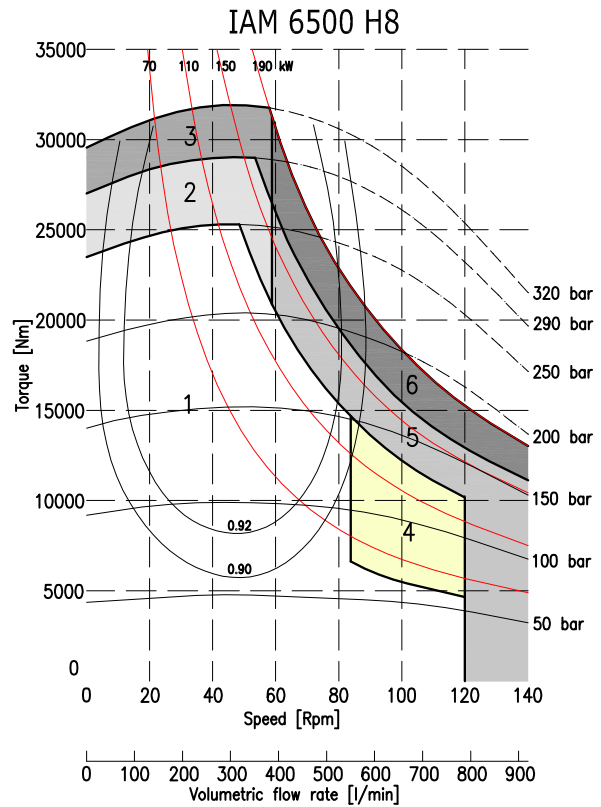
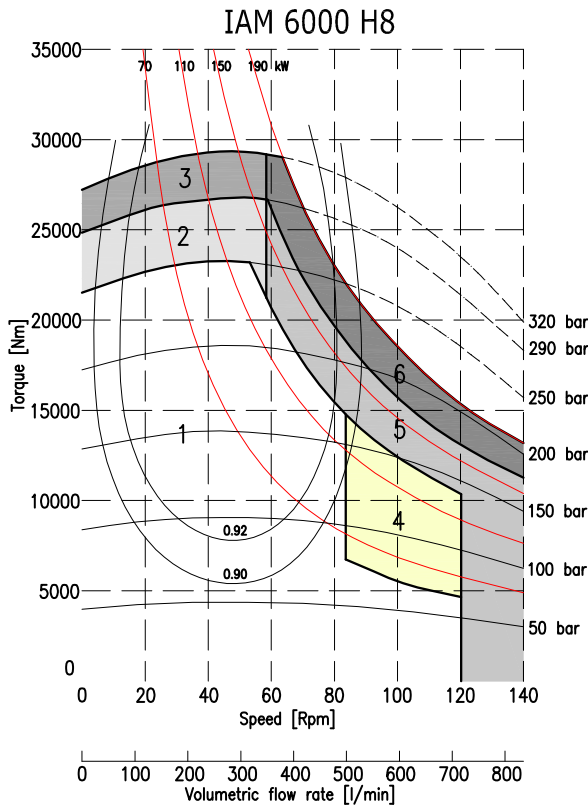
A2: Parallel shaft on request



## ORDERING INSTRUCTIONS

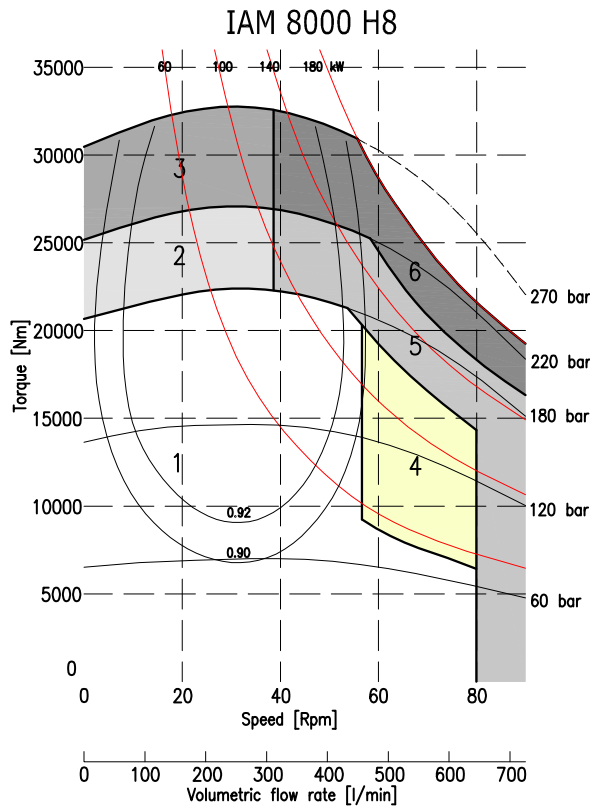


**EXAMPLE:** IAM.6000.H8.A1.D200  
IAM.6800.H8.A1.D200.TA.SB10  
IAM.8000/C.H8.A0.D200.J



1	Continuous operation
2	Intermittent operation for period 3-5 minutes every 10-15 minutes
3	Intermittent operation for very short period (3-5 seconds every 10-15 minutes)

4	Continuous operation with flushing
5	Intermittent operation for period 3-5 minutes every 10-15 minutes with flushing
6	Intermittent operation for very short period (3-5 seconds every 10-15 minutes) with flushing



1	Continuous operation
	Intermittent operation for period 3-5 minutes every 10-15 minutes
	Intermittent operation for very short period (3-5 seconds every 10-15 minutes)

	Continuous operation with flushing
	Intermittent operation for period 3-5 minutes every 10-15 minutes with flushing
	Intermittent operation for very short period (3-5 seconds every 10-15 minutes) with flushing



Factory 19 / 5 Lyn Parade PRESTONS NSW 2170  
Ph: (02) 9607 4100 Fax: (02) 9607 4200