



# Mk3D POWER PACKS

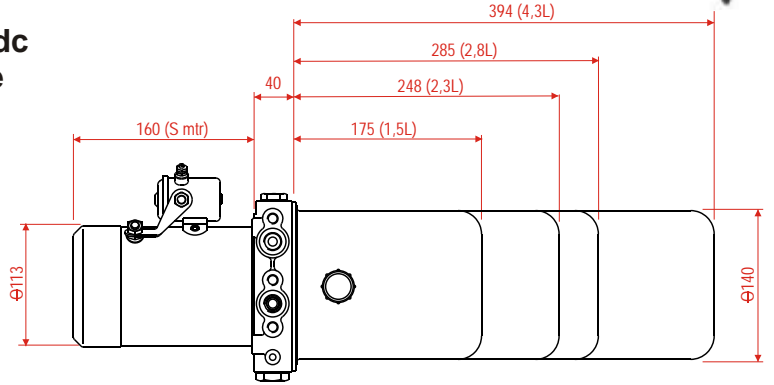
2008 Series



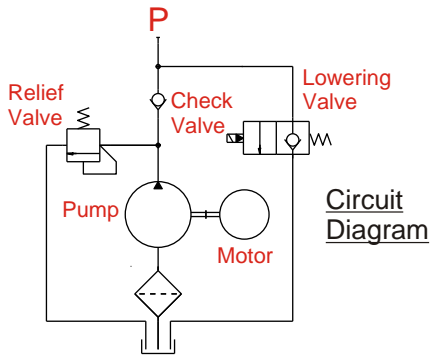
**Industry standard range of 12V & 24V dc  
Power Units for a wide range of mobile  
applications.  
Flows to 20l/min  
Pressures to 300bar  
Motors 1,6kW to 3kW (nominal)**

## FEATURES

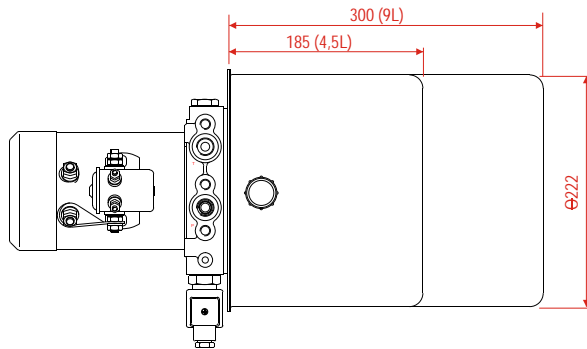
- Pressure balanced gear pump
- Industry standard lowering valve
- Industry standard mounting
- Precision "quiet" relief valve
- Wide range of options
- Global support & servicing



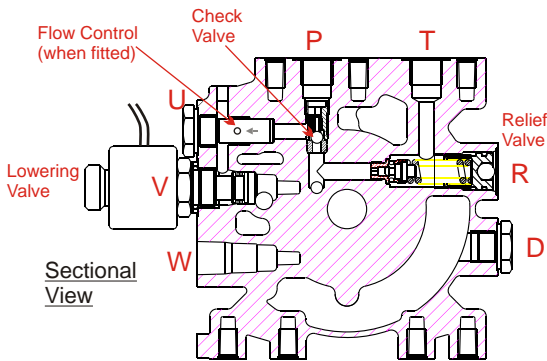
Typical Mk3D Pack  
Featuring 4.5" (113mm) S Motor  
Small diameter Tanks



Circuit  
Diagram

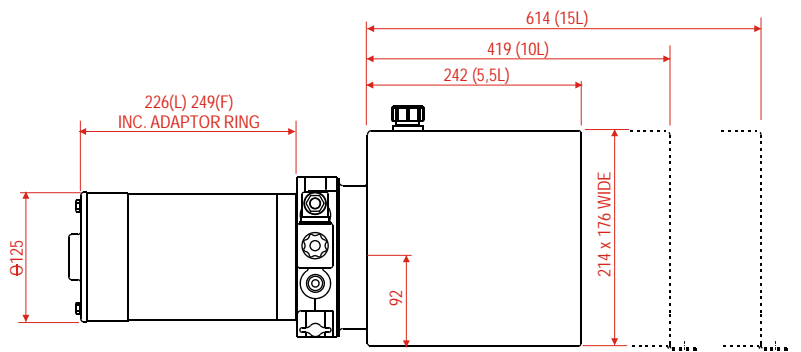


Typical Mk3D Pack  
Featuring 4.5" (113mm) S Motor  
Large Diameter Tanks



### Ports Marked on Casting

- P = Pressure Port 3/8" BSP
- T = Tank Port 3/8" BSP
- R = Relief Valve
- D = Drain Port 3/8" BSP
- W = Not Used
- V = Valve Cavity
- U = Aux Pressure Port 3/8" BSP



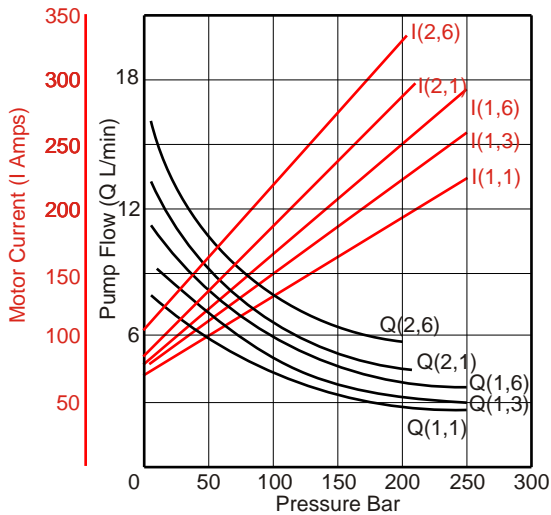
Typical Mk3D Pack  
Featuring 5" (125mm) L or F Motor  
Rectangular Tanks

# PERFORMANCE DATA Mk3D POWER PACKS

## MOTOR TYPE S (Series Wound, $\varnothing 113\text{mm}$ )

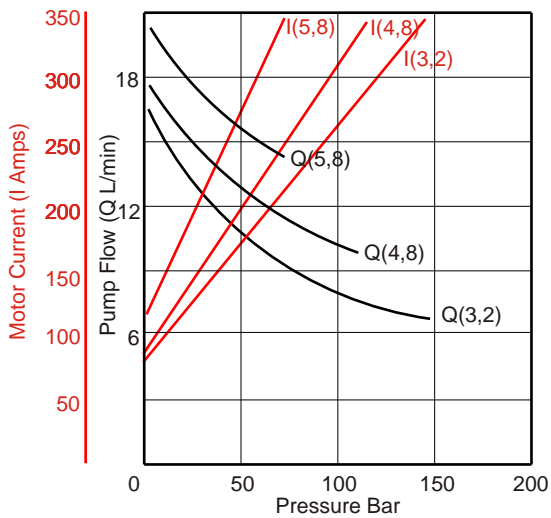
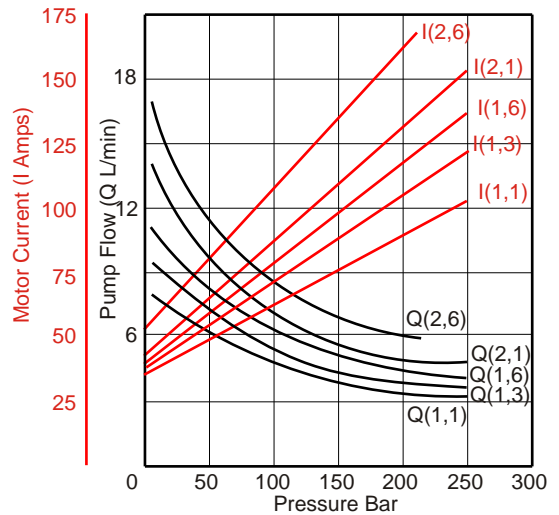
Nominal performance of pack combinations at constant voltage  
and at nominal  $20^{\circ}\text{-}25^{\circ}\text{C}$  with ISO VG22 oil.

### 12V Motor

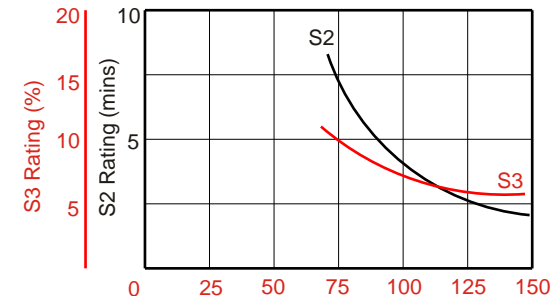
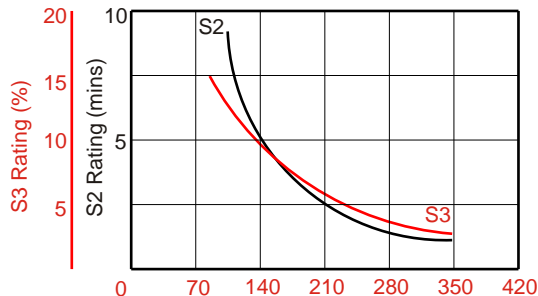
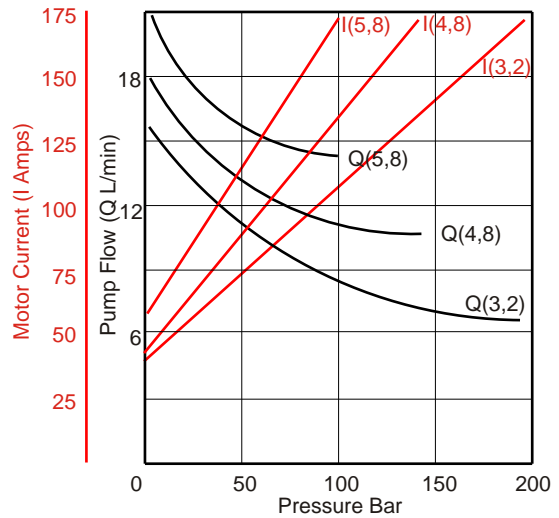


For Pump Capacities:  
1,1cc/rev  
1,3cc/rev  
1,6cc/rev  
2,1cc/rev  
2,6cc/rev

### 24V Motor



For Pump Capacities:  
3,2cc/rev  
4,8cc/rev  
5,8cc/rev

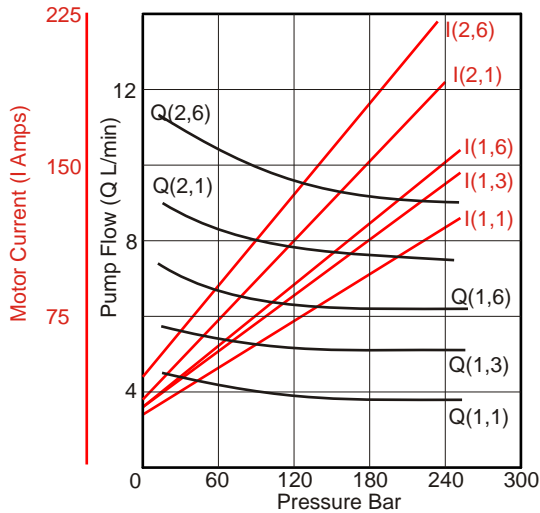


# PERFORMANCE DATA MK3D POWER PACKS

## MOTOR TYPES L & F (Long Rated/Fan Cooled $\varnothing 126\text{mm}$ )

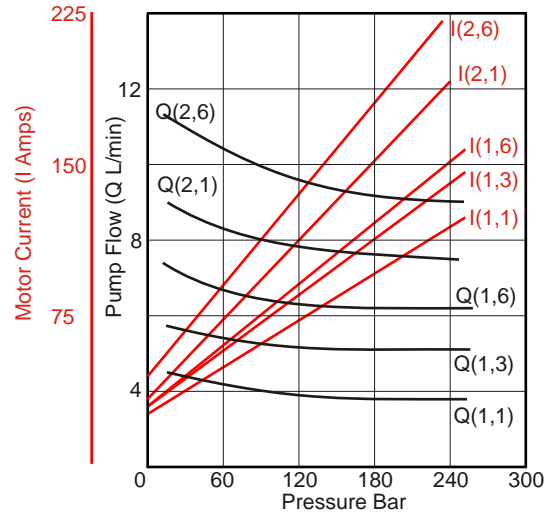
Nominal performance of pack combinations at constant voltage  
and at nominal 20°-25° C with ISO VG22 oil.

### 24V 'L' Motor

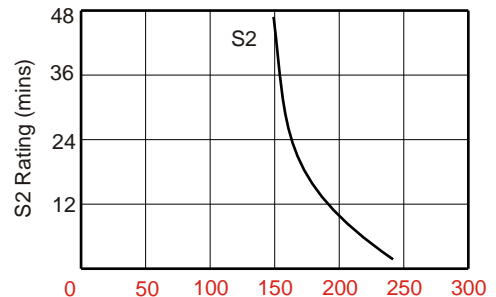
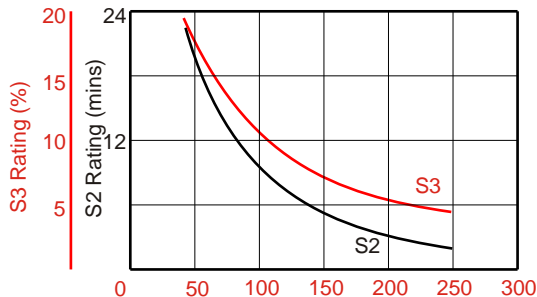
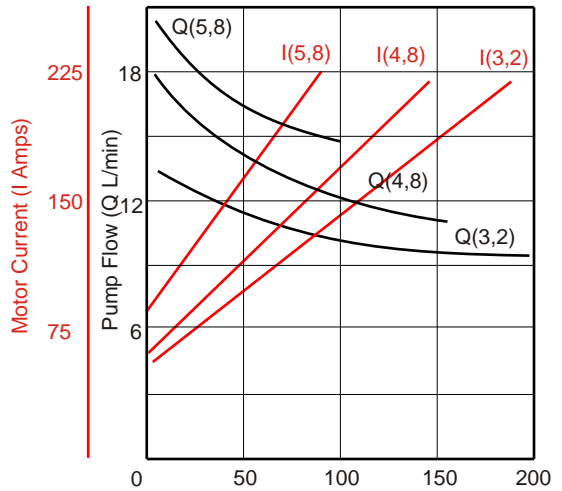
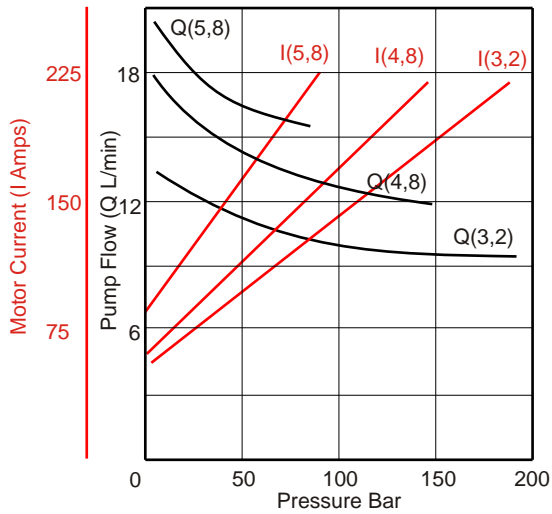


For Pump Capacities:  
1,1cc/rev  
1,3cc/rev  
1,6cc/rev  
2,1cc/rev  
2,6cc/rev

### 24V 'F' Motor



For Pump Capacities:  
3,2cc/rev  
4,8cc/rev  
5,8cc/rev



# Mk3D POWER PACKS - TECHNICAL DATA

## Hydraulic Fluid(recommended)

Mineral hydraulic oil (HM or HV)  
For normal ambient temp range (0°C-40°C)  
ISO VG22 to ISO VG46

Working temp (ambient) -20°C - +40°C

## Weight

Typical assembly (dry) 12,5kg  
Each additional litre tank capacity 1kg

## Maximum Pressures (see performance curves)

0,8cc	200bar
1,1 to 2,6cc	275bar
3,2cc	240bar
4,8 5,8cc	200bar

## Options Available

Lowering valves (N Closed N Open Double Lock)  
Coil Voltages 12V 24V dc; 110V 230V 50/60Hz

Flow Controls (full range 0,5l/m to 13l/m)  
Heavy Duty Start Switch  
Remote Start/Stop Switch Pendants

Manifolds & Control valves Cetop03  
Manifolds & Control valves Series35  
Special Valve Blocks (eg Dock Leveller)

Special Tanks  
Weld Ring for Custom Tanks  
Weatherproof Box and Motor Cover

## MAIN SPARES KITS

Pump Kit	KPG**01A	** = pump code ref	Centre Plate Kit	KC3D1101B
Seal Kit	KSK3D01B		Cavity Plug Kit	KCPG02A
Tank Kit	KT3***I01A	*** = tank code ref		
		! = H or V (see code)		
Motor Kit	KMD***01A	*** = motor code ref	Lowering Valve	KSLV-8-**F ** = 12 or 24
Starter Kit	KSW**S01A	** = 12 or 24 (for S motors)	N Open Valve	FOLV-8-**F ** = 12 or 24
	KSW**H01A	** = 12 or 24 (L or F motors)	Double Lock	FDLV-8-**F ** = 12 or 24

# Mk3D POWER PACKS - ORDERING CODES

2 R S			2 1		H	2 3		8	3	N N		X X X		
Motor			Pump Capacity			Tank Size (working volume)		Lowering Valve	Flow Control	Ancillary Valve	Special Code			
1		12V	08	0,8 cc/rev		15	1,5 Litres	8	Solenoid		Allocated by manufacturer for all custom and non-standard assemblies.			
2		24V	11	1,1 cc/rev		23	2,3 Litres	7	Dble Lock					
	E	Earth Return	13	1,3 cc/rev		28	2,8 Litres	6	N. Open		CT	Cetop 03 Subplate		
	R	Ins'd Return	16	1,6 cc/rev		43	4,3 Litres	3	None		35	Series 35 Subplate		
		S Series	21	2,1 cc/rev		45	4,5 Litres	X	Special		N	None		
		C Compound	26	2,6 cc/rev		90	9 Litres				X	Special		
2	R	L Long Rated	32	3,2 cc/rev		R1	5,5 Litres		3	2,5 L/min	The products are subject to development and the manufacturer reserves the right to change the specifications without notice			
2	R	F Fan Cooled	48	4,8 cc/rev		R2	10 Litres		4	4 L/min				
N	N	N No motor	58	5,8 cc/rev		R3	15 Litres		5	5 L/min				
X	X	X Special				R4	17 Litres		7	7 L/min				
						R5	28 Litres		9	9 L/min				
						NN	None		N	None				
						XX	Special		X	Special				

Orientation

H	Horizontal
V	Vertical
X	Special

Items **THUS** are non-preferred.  
F motors are 24V only.

The 2008 series replaces the former G1/2 lowering valve with the industry standard 8-2 size. The flow control is now located beneath the U plug.