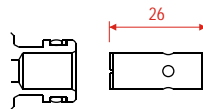
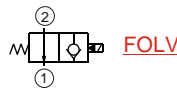
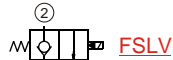
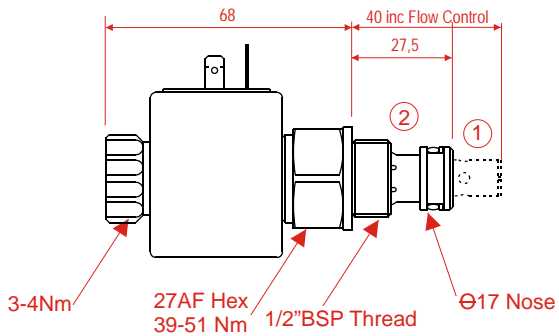


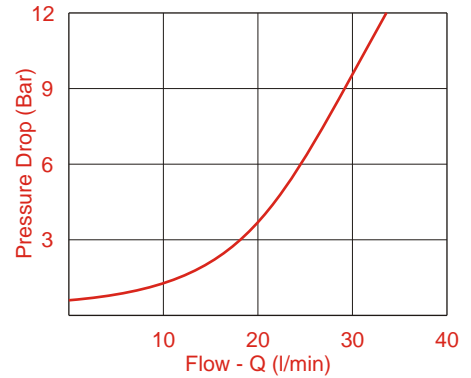
# Mk3D POWER PACKS

## Lowering Valves

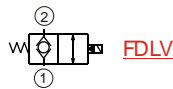
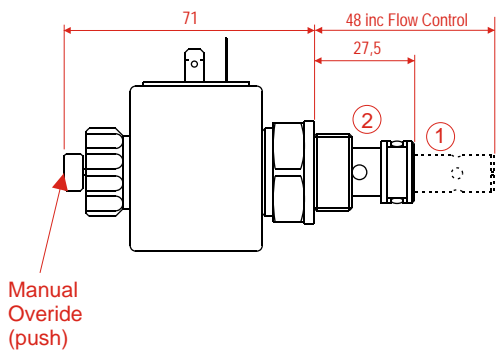
### FSLV-G-\*\* & FOLV-G-\*\* Lowering Valves



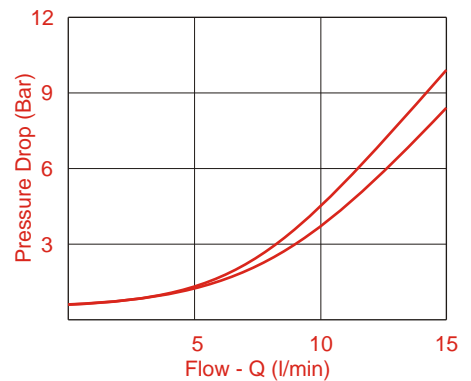
Scrap section of valve nose showing Flow Control recess and correct direction for flow control insert.



### FDLV-G-\*\* Lowering Valves



Scrap section of FDLV nose showing shallower recess.



## Mk3 LOWERING VALVES - ORDERING CODES

F S L V

Valve Type

F	S	L	V	N. Closed
F	O	L	V	N. Open
F	D	L	V	Dble Lock

G

Valve Size to fit G<sup>1</sup>/<sub>2</sub> cavity

G	Cartridge
N	Coil Only

- 1 2

Coil Voltage

12	12V dc
24	24V dc
110	110.50 Hz
230	230.50 Hz
NN	No Coil

H

Coil Connection

H	DIN 43650 Connector
F	Flying Lead (dc only)
X	Rectified Connector
N	No Connector

The products are subject to development and the manufacturer reserves the right to change the specifications without notice

# Mk3D POWER PACKS

## Lowering Valves

### TECHNICAL DATA

	FSLV & FOLV	FDLV
Maximum Operating Pressure	350 Bar	210 Bar
Rated Flow	30 l/min	15 l/min
Cavity (see drg for full details)	G1/2	G1/2
Weight (inc coil)	0,33kg	0,33kg
Ambient Temperature range	-20°C to + 50°C	-20°C to + 50°C
Coil Insulation Class	"F" 155°C	"F" 155°C
Coil voltage tolerance	-10% to +10%	-10% to +10%
Nominal Coil Power	17W	17W
Internal Leakage	<5 drops/min	<5 drops/min
Filtration	25 micron or better	25 micron or better

### Notes

Valves are designed to fit the lowering valve cavity of Mk3, Slimline and Autopacks.  
 They can also be supplied in standard threaded bodies for circuit use (see separate data sheet)  
 Coils are interchangeable across the range.

## Cavity Detail

