

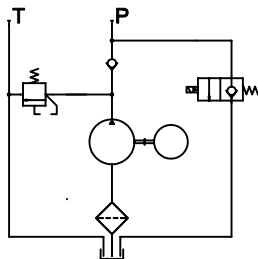
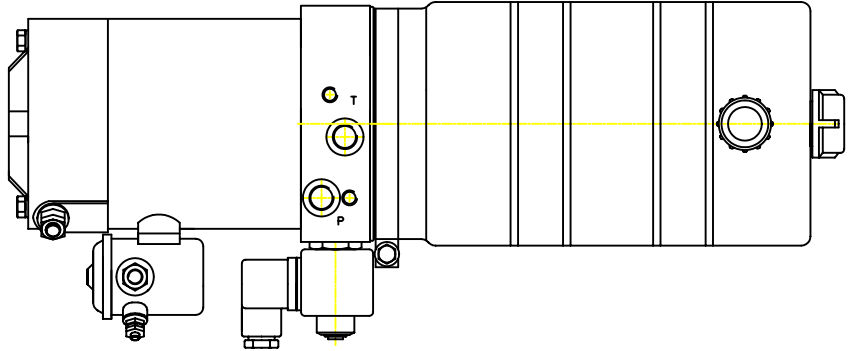
New G Series Power Pack

Standard features:

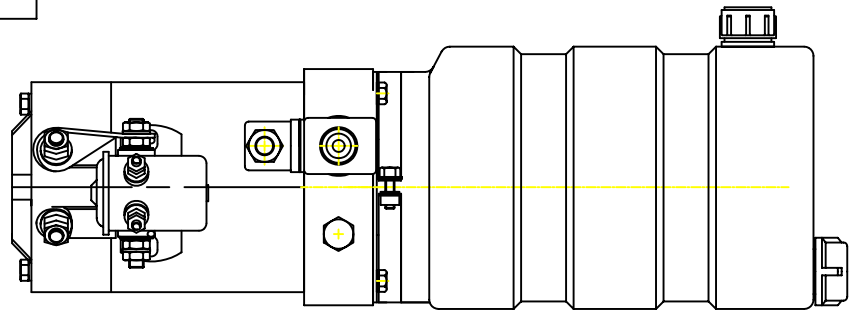
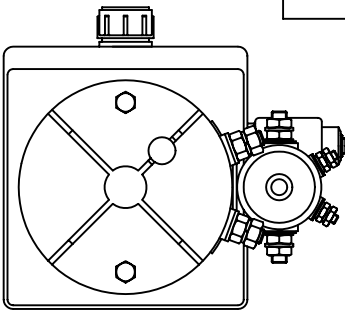
DC motors,
Lowering Valves
Series 35 valves

Alternative features

AC motors
Emergency hand pump
Special tanks
Tandem pumps



Standard Circuit



G 2 R S * * H * * * * * * * * * * * * *

Motor Pump Tank Valves Options

G-Pack

1=12V
2=24V

E=Earth Return
R=Insulated Return
X=Special

S=Series Wound
C=Compound Wound
L=Long Rated
F=Fan Cooled
X=Special

Pump size

11=1,1cc/rev R_{max} 250bar
16=1,6cc/rev R_{max} 250bar
21=2,1cc/rev R_{max} 250bar
26=2,6cc/rev R_{max} 250bar
32=3,2cc/rev R_{max} 210bar
48=4,8cc/rev R_{max} 210bar

H=Horizontally Mounted
V=Vertically Mounted
X=Special Mounting

Lowering valve
S=solenoid operated
M=manual operation
N=none fitted
X=special

Tank size

PA=1,5L plastic
PD=3,0L plastic
PH=5,0L plastic
PL=8,0L plastic
XX=special

Special assembly code
(eg. A6J)

Special features

Flow control

1=1l/min
2=2l/min
3=3l/min
4=4l/min
6=6l/min
8=8l/min
N=none
X=special